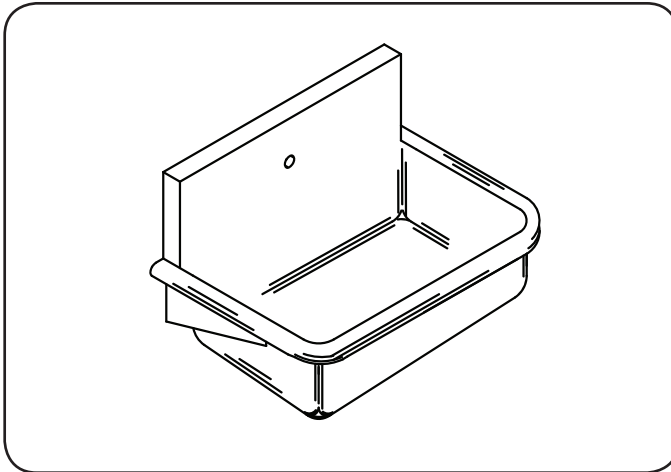




J-ADA-3020

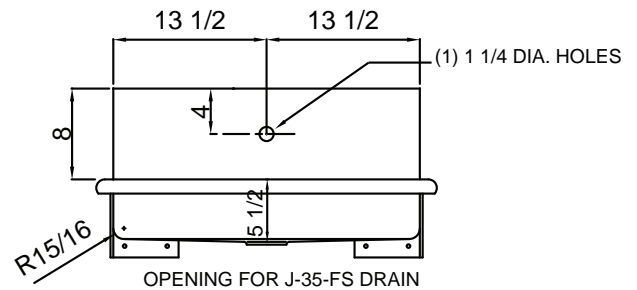
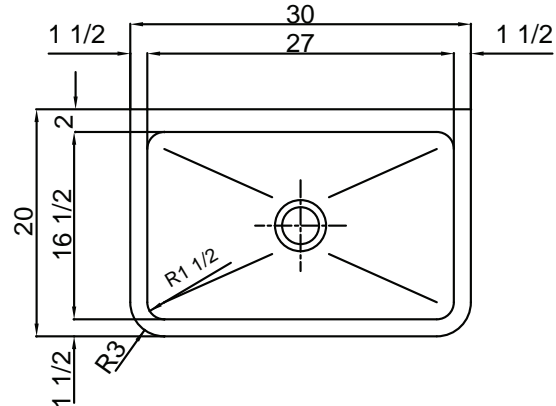
INSTITUTIONAL GROUP
ADA COMPLIANT - WASH-UP SINK

SUBMITTAL DATA



SPECIFICATION

ADA Compliant. Seamless welded constructed, fabricated of 14 gauge, type 304 stainless steel. 1-1/2" dia. roll rim on front and sides. Interior surfaces polished with a non-porous Hand-Blended Just Finish. Exterior surface to have a brush finish. Underside cleaned. Supported by (2) 14 gauge type 304 stainless steel brackets and (1) 14 gauge wall clip. Drain punch for Just J-35 series drains. Certified to ASME A112.19.3/CSA B45.4; UPC; IPC.



Sink certified to ASME A112.19.3/CSA B45.4; Uniform Plumbing Code (UPC); International Plumbing Code (IPC), by NSF International. Certified with/without overflow, less fittings.



Certified to be in compliance with the accessibility design requirements of ICC/ANSI A117.1-2003 Accessible and Usable Buildings and Facilities and the 2010 ADA Standards for Accessible Design. Installation is per manufacturer's instructions, ICC/ANSI A117.1 and the 2010 ADA Standards for Accessible Design by NSF International.

APPROVED FOR MANUFACTURING

MODEL NO.: **J-ADA-6020** QTY: _____

JOB NAME: _____

TAG/ITEM: _____

CUSTOMER: _____

SIGNATURE: _____



JUST MFG. COMPANY CONTINUES TO MAKE QUALITY AND FUNCTIONALITY A MARK OF THE JUST PRODUCT LINE. WE RESERVE THE RIGHT TO CHANGE PRODUCT INFORMATION WITHOUT NOTICE. DIMENSIONS MAY CHANGE AND MAY BE SUBJECT TO CHANGE WITHOUT NOTICE. NO RESPONSIBILITY IS ASSUMED FOR USE OF SUPERCEDED OR VOIDED DATA. JUST MFG. CO. SINKS ARE MADE IN THE U.S.A. WHEN COMPARING OTHER BRAND PRODUCTS, BE SURE TO COMPARE USA QUALITY ALONG WITH FEATURES AND DIMENSIONS.

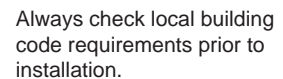
JUST MANUFACTURING COMPANY

9233 KING STREET . FRANKLIN PARK . ILLINOIS . 60131-2111

PH: 847-678-5150 . FAX: 847-678-6817 . E-MAIL: custserv@justmfg.com . www.justmfg.com



ROUGH-IN DATA



www.justmfg.com