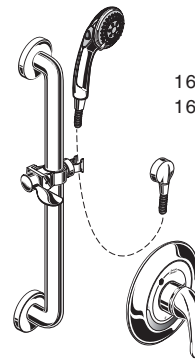


American Standard

Installation Instructions

COMMERCIAL SHOWER SYSTEM KITS: 1.5gpm & 2.5gpm

1662SG.211
1662SG.221



1662SG.211 (1.5gpm)
1662SG.221 (2.5gpm)

Thank you for selecting American Standard...the benchmark of fine quality for over 100 years.

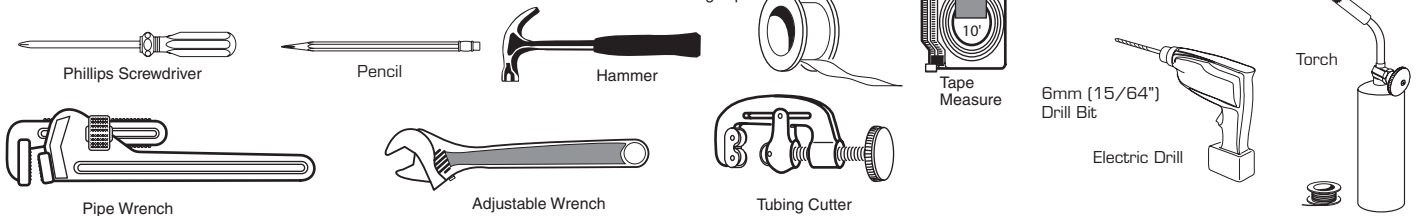
To ensure that your installation proceeds smoothly—please read these instructions carefully before you begin.

Installation must conform to all local building codes.

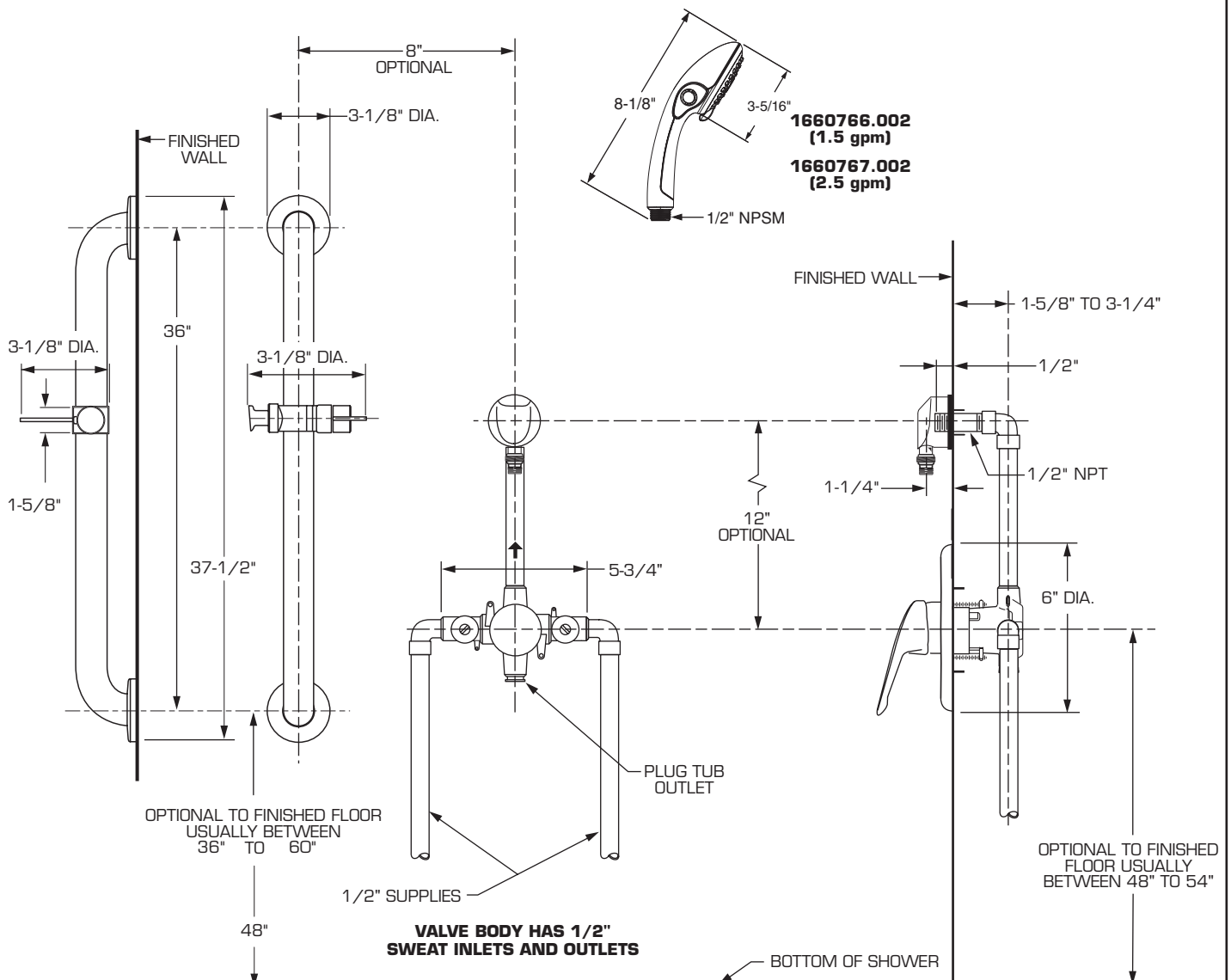
Certified to comply with ANSI A112.18.1

M965666 (3/15)

Recommended Tools & Materials



ROUGHING-IN DIMENSIONS



1 INSTALL THE R120SS VALVE BODY

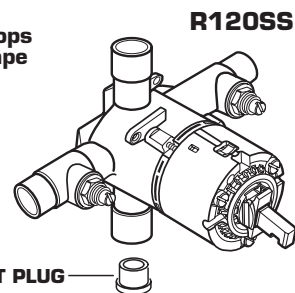
NOTE

REFER TO INSTALLATION INSTRUCTIONS (M968387) SUPPLIED WITH VALVE BODY FOR COMPLETE INSTALLATION AND REPAIR PART INFORMATION.

IMPORTANT

When soldering, remove **PLASTER GUARD, CARTRIDGES and CHECK STOPS (IF PRESENT)**. When finished soldering, flush valve body, replace cartridges, check stops (if present) and plaster guard to continue installation. Use thread sealant or Teflon tape on threaded connections.

- See Roughing-in diagram before starting.
- Connections are:
 - 1/2" copper sweat for sweat inlets
 - 1/2" copper sweat for sweat tub and shower outlets



1/2" SWEAT PLUG

2 MAKE ALL CONCEALED PIPING CONNECTIONS

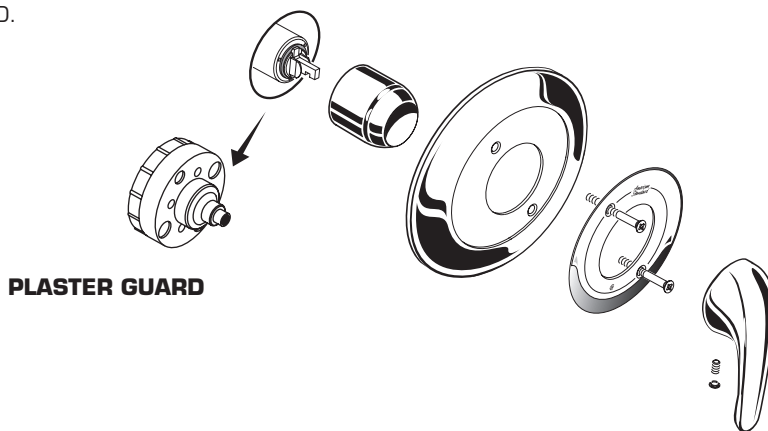
- See Roughing-in diagram before starting.
- Make Hot and Cold supply connections to the VALVE BODY. Inlet and outlet connections to the valve body are 1/2" copper sweat.
- Make the connections for the HAND SHOWER. The HAND SHOWER connection is 1/2" NPT.
- For support, use PIPE BRACES secured to wooden braces. Cap off HAND SHOWER. With the R120SS VALVE turned off, turn on water supplies. Check for leaks.
- Finish all wall construction.

3 INSTALL VALVE TRIM

NOTE

REFER TO INSTALLATION INSTRUCTIONS (M968763) SUPPLIED WITH VALVE TRIM KIT FOR COMPLETE INSTALLATION AND REPAIR PART INFORMATION.

- When finished tiling the wall, remove PLASTER GUARD.
- Install VALVE TRIM.



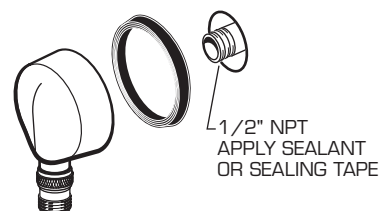
PLASTER GUARD

4 INSTALL WALL SUPPLY

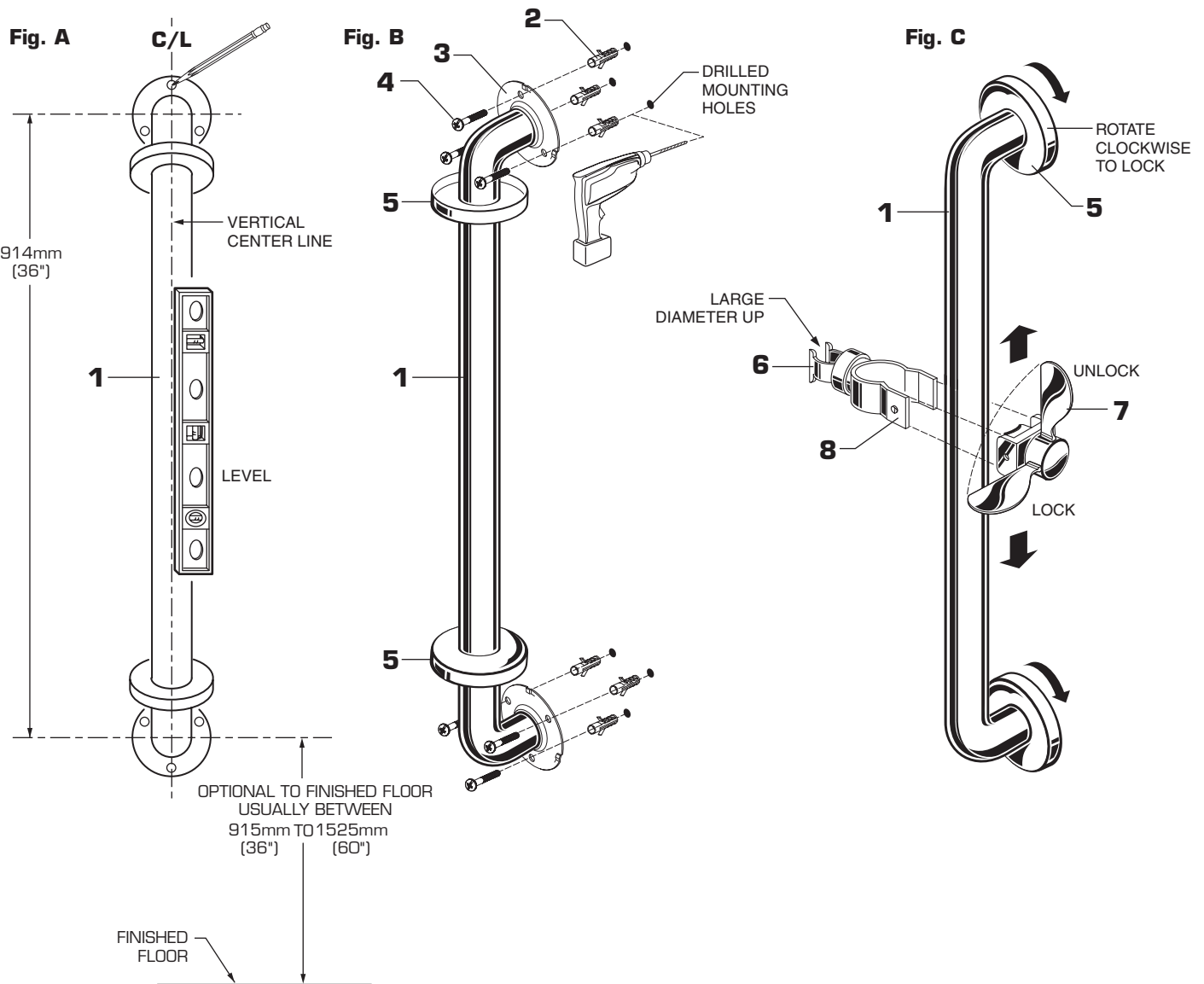
NOTE

REFER TO INSTALLATION INSTRUCTIONS (M968637) SUPPLIED WITH WALL SUPPLY FOR COMPLETE INSTALLATION AND REPAIR PART INFORMATION.

- Supply to WALL SUPPLY is 1/2" NPT. See rough-in above for detailed information.
- Apply sealant or sealing tape to threads of 1/2" NPT supply nipple.



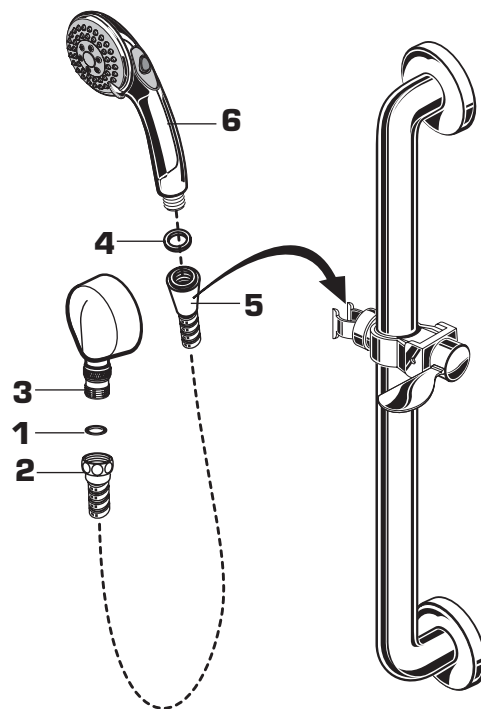
- The GRAB BAR (1) works best when secured to the wall studs or cross brace using WOOD SCREWS. If mounting into the studs is not possible, use appropriate wall fasteners provided to secure the installation.
- Mark a vertical **center line** in the location you wish to install the SLIDE BAR (1). **NOTE: The height from the finished floor is optional. See rough-in drawing for suggested dimensions.**
- Determine desired height from the finished floor to the lower support and mark a horizontal center line. Slide the two WALL ESCUTCHEONS (5) away from the MOUNTING FLANGES (3). Position the GRAB BAR (1) as shown in **Fig. A** and mark the location of the six mounting holes to be drilled. **Fig. A.** Using a #10 masonry drill, drill six mounting holes 1-1/4" max. deep. **Fig. B.**
- Install the six ANCHORS (2) provided into the mounting holes. Use a hammer to lightly tap ANCHORS (2) into place. Make sure they are installed flush against the finished wall. **Fig. B.**
- Align and place the GRAB BAR MOUNTING FLANGES (3) over the installed ANCHORS (2). Secure the GRAB BAR (1) to the wall with the SCREWS (4) provided. **Fig. B.**
- Push WALL ESCUTCHEONS (5) against finished wall. Rotate WALL ESCUTCHEONS (5) clockwise to lock into position. **Fig. C.**
- Make sure larger diameter side of SPRAY HOLDER (6) is facing upward. If not rotate SPRAY HOLDER (6) 180 degrees. Rotate the LEVER HANDLE (7) to the unlocked position. Push the SPRAY HOLDER (6) side onto the GRAB BAR (1). Push the LEVER HANDLE SIDE (7) over the SPRAY HOLDER ARMS (8) until the two snap together.
- Check operation of SLIDE BAR (1) by rotating HOLDER LEVER (7) and moving HAND SHOWER HOLDER (9) up and down. Rotate LEVER HANDLE (7) back to lock HAND SHOWER HOLDER (6). **Fig. B.**



6

INSTALL HOSE AND HAND SHOWER TEST SHOWER SYSTEM

- Install SEAL (1) into COUPLING NUT (2). Connect COUPLING NUT (2) to WALL SUPPLY NIPPLE (3) and tighten.
- INSTALL second SEAL (4) into SPRAY HOSE END (5) and connect HAND SHOWER (6) to SPRAY HOSE END (5). Hand tighten.
- Turn on water supplies and check all functions of the SHOWER SYSTEM KIT. Check for any leaks.



CARE INSTRUCTIONS:

DO: SIMPLY RINSE THE PRODUCT CLEAN WITH CLEAR WATER. DRY WITH A SOFT COTTON FLANNEL CLOTH.

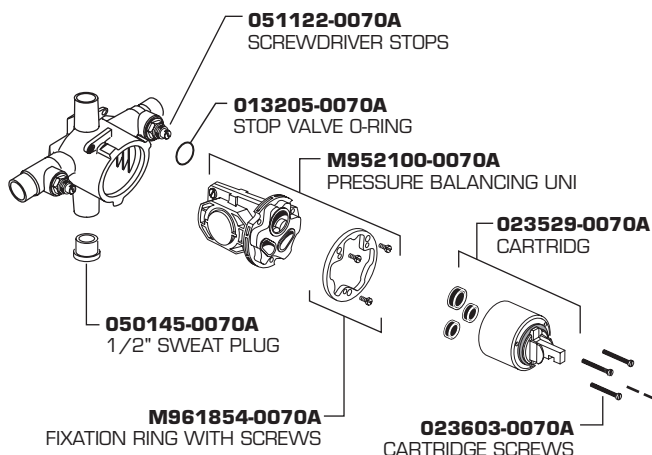
DO NOT: DO NOT CLEAN THE PRODUCT WITH SOAPS, ACID, POLISH, ABRASIVES, HARSH CLEANERS, OR A CLOTH WITH A COARSE SURFACE.

American Standard

PRESSURE BALANCE TEMPERATURE/VOLUME CONTROL VALVE

MODEL NUMBER

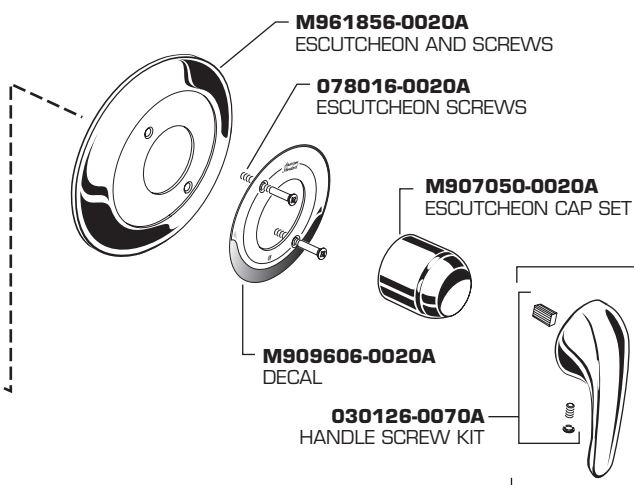
R120SS



COLONY SOFT VALVE TRIM

MODEL NUMBER

T675.500



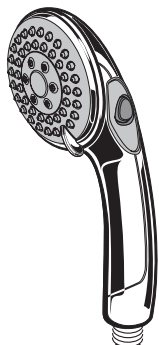
HOT LINE FOR HELP

For toll-free information and answers to your questions, call:
1-800-442-1902
Weekdays 8:00 a.m. to 6:00 p.m. EST
IN CANADA 1-800-387-0369 (TORONTO 1-905-306-1093)
Weekdays 8:00 a.m. to 7:00 p.m. EST
IN MEXICO 01-800-839-1200

Appropriate finish code

CHROME 002

M961636-0020A
LEVER HANDLE KIT



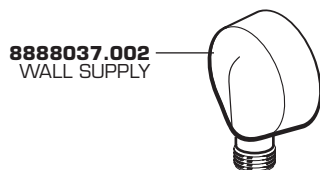
3-FUNCTION HAND SHOWER

1660766.002
(1.5 gpm)

1660767.002
(2.5 gpm)

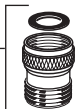
WALL SUPPLY

8888.037.002

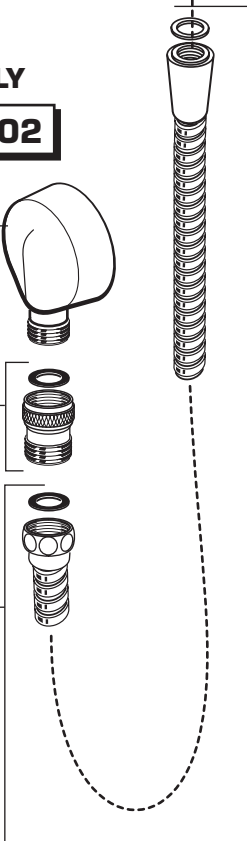
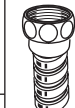


8888037.002
WALL SUPPLY

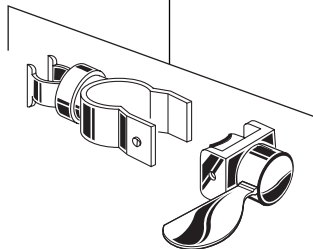
M962520-0020A
CHECK VALVE



030782-0020A
HOSE KIT



M9641800020A
SPRAY HOLDER
ASSEMBLY

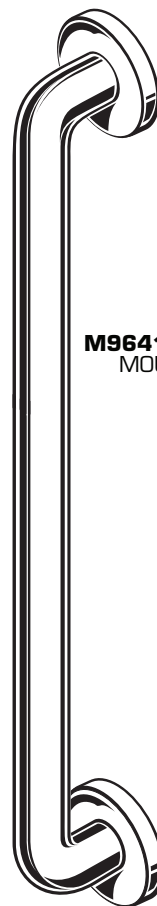


METAL HOSE

8888.035.002

36" SLIDE BAR

1660.236.002



M964179-0070A
MOUNTING KIT



Appropriate finish code

CHROME 002



HOT LINE FOR HELP

For toll-free information and answers to your questions, call:
1-800-442-1902
Weekdays 8:00 a.m. to 6:00 p.m. EST
IN CANADA 1-800-387-0369 (TORONTO 1-905-306-1093)
Weekdays 8:00 a.m. to 7:00 p.m. EST
IN MEXICO 01-800-839-1200

Product names listed herein are trademarks of American Standard Inc.
© AS America, Inc. 2015