



Home Security Hardware





WHO WE ARE

Headquartered in Redlands, California, Prime-Line Products was established in 1978 as a supplier of Window and Door Replacement Hardware. What started as an initial offering of 300 parts, has now grown to an assortment of thousands of items in a variety of categories within the Home Improvement space.

Prime-Line's growth is enhanced by our proprietary regional assortment data that takes the guesswork out of a business as SKU intensive as replacement hardware and answers the question 'What sells where?' Our relentless focus on innovation, customer service, attention to detail and accurate order processing have been instrumental in developing Prime-Line's leading position in the market for more than 40 years.

Today, with an ever-expanding product mix, Prime-Line is recognized as North America's largest supplier of window and door replacement hardware and is a leader in the Maintenance, Repair and Operations (MRO) industry.

Time and time again, we're the go-to brand for retailers, wholesalers, commercial companies and individual homeowners because of the 'one-stop shop' experience our item selection and in-house expertise provides.

Without a doubt, we offer thousands of replacement hardware parts... including the one you need.

What makes us different:

- Largest selection of current and hard-to-find hardware plus adjacent categories
- Competitive wholesale pricing
- Proprietary market data that provides guidance for regional assortments
- In stock, ready to ship inventory
- Personalized account management and technical support

How we can help:

- Global sourcing and manufacturing
- Private labeling
- Single-item drop ship and large warehouse order fulfillment
- Nationwide shipping from a centralized location
- Full EDI integrations developed in-house
- In-house eCommerce, content creation and Creative Services

Have questions?

Our Customer Experience team is made up of industry veterans, they are true experts and are here to help. If you have questions, need a quote or want to place an order, send an email to customerservice@primeline.net or call 1-800-255-3505 Monday thru Friday 6am to 5pm PST.

For further information, please contact us directly:

1980 Orange Tree Lane, Suite 100
Redlands, CA 92374
800.255.3505
primelineparts.com

Modified: Aug 1, 2025

HOME SECURITY

Hardware



Choosing the proper security for your home

According to the FBI, a burglary occurs somewhere in the US every 15.4 seconds.

Most burglaries are carried out in less than 10 minutes.

3 out of 4 homes in the US will be broken into within the next 20 years.

22% through a back door 23% through a first floor window

34% through the front door

Entry Doors: 67% of all burglaries are initiated by forced entry. A majority of these are accomplished by kicking in a door. Door guard plates and high security strikes work together to help prevent door kick in attacks. A secure metal barrier prevents jimmy tools from destroying jambs and trim as well. Door viewers, chain door guards and bar door guards help keep you safe from strangers when answering your door.

Windows: Most windows can easily be forced open by prying or lifting the sash. Secondary security locks can allow for ventilation, help prevent unwanted access and offer child safety benefits. A wide variety of styles offer the homeowner everything from tamper-resistant window locks to keyed locks, assuring solid, safe child protection as well.

Patio Doors: A favorite entry point for many burglars. Many door systems can be lifted or pried open easily. Adding a security bar or secondary locking bolt provides another layer of protection for your family that will help secure your home.

Cabinet and Drawers: Keep dangerous chemicals and important items locked up for safety and peace of mind. Cam locks; panel locks and mailbox locks can provide a security in these overlooked areas. Useful in the home or garage, these devices are also easily installed.



U 9549
Door Guard



U 9909
Chain Door Lock



U 9801
Window Lock



U 9933
Window Lock



U 9858
Patio Door Lock



U 9882
Patio Door Lock



U 11088
Drawer & Cabinet Lock



We've made it simple to choose the security device that best suits your needs. Be it entry, patio, window or utility, Prime-Line has you covered.

Section Table of Contents

[How To Use The Catalog](#)

[Latchshields](#)

[Cylinder Locks](#)

[Patio Door Locks](#)

[Deadlatch/Deadlocks](#)

[Segal Locks](#)

[Door Reinforcers](#)

[Strikes](#)

[Door Viewers](#)

[Window Guards](#)

[Drawer/Mailbox Locks](#)

[Window Locks](#)

[Entry Door Locks](#)

Get the most out of your interactive catalog



Qty: 1 set, 2 keys, with fasteners.

Steel trim plates, case and knobs, keyed, interior use only.

E 2293 (Brass finish)

E 2495 (Bronze finish)

E 2330 (Satin nickel finish)

E 2798 (Matte black finish)

Clickable hyperlink launches internet browser, opening a new web page that redirects to the product page on the Prime-Line website.

Toggle between photo and dimensioned line drawing of product.

Additional product specifications.

The screenshot shows a web browser window displaying the product page for a Steel, Satin Nickel, Interior Door Lock (SKU: E 2330). The page features a search bar at the top with 'E 2330' entered. Below the search bar is a navigation menu with categories: REPAIR/REPLACEMENT PARTS, SAFETY AND SECURITY PRODUCTS, FASTENERS, CATALOGS, and PROJECTS. The main content area displays the product name 'Steel, Satin Nickel, Interior Door Lock' with a price of '\$20.01'. A product description lists features such as 'Instructions included to show how to make either left or right handed', 'Used for interior doors such as bedroom, bathrooms and other interior door', 'Made from case-hardened steel', and 'View Details'. Below the description is an 'ADD TO CART' button. A 'PRODUCT DETAILS' section provides additional information: 'These are satin nickel plated steel trim plates made from case-hardened steel. The lock bolt is key activated from both the inside, and outside. These locksets are designed for interior use only.' A 'SPECIFICATIONS' section lists: 'Satin nickel plated trim plates and knobs', 'Ideal for interior doors that you want extra security on', 'Designed for doors that are 1 3/8 in. to 1 3/4 in. doors', 'A Phillips head screwdriver is required for installation', and 'Please refer to the line art drawing for dimensions and compare with your needs before purchasing'. A sidebar on the left shows a vertical list of product images, with the selected product highlighted. A 'COMPARE' button is visible above the product title.

Descriptive title.

Product description.

Add to cart option

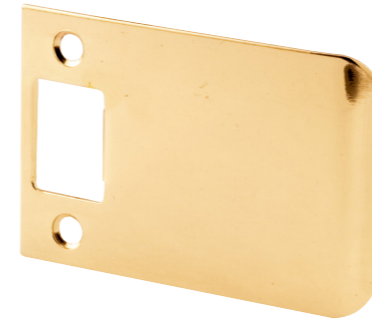
Latch Strikes

Steel, adjustable tab, 1-5/8 in. hole spacing.

- [E 2232](#) (Brass finish – Qty. 2, with fasteners)
- [E 2307](#) (Brass finish – Qty. 1, with fasteners)
- [E 2349](#) (Brass finish – Qty. 20, with fasteners, per box)
- [E 2233](#) (Antique brass finish – Qty. 2, with fasteners)
- [E 2308](#) (Antique brass finish – Qty. 1, with fasteners)
- [E 2234](#) (Chrome finish – Qty. 2, with fasteners)
- [E 2309](#) (Chrome finish – Qty. 1, with fasteners)
- [E 2301](#) (Stainless steel finish – Qty. 2, with fasteners)
- [E 2457](#) (Satin nickel finish – Qty. 2, with fasteners)



- [E 2456](#) (Satin nickel finish – Qty. 1, with fasteners)
- [E 2516](#) (Bronze finish – Qty. 2, with fasteners)
- [E 2793](#) (Matte black finish – Qty. 2, with fasteners)



- Qty: 1, with fasteners.
Adjustable tab, 1-5/8 in. hole spacing.
- [E 2347](#) (Brass finish – 2-1/2 in. overall length)
 - [E 2345](#) (Solid brass – 3-1/2 in. overall length)



- Qty: 1 set, with fasteners.
Steel, adjustable, 3 pieces, 2-1/8 in. hole spacing.
- [U 9486](#) (Brass finish)
 - [U 9488](#) (Chrome finish)
 - [U 94865](#) (Satin nickel finish)
 - [U 94867](#) (Bronze finish)
 - [U 94868](#) (Matte black finish)



- Qty: 1 set, with fasteners.
Steel, adjustable, 2 pieces, 2-1/8 in. hole spacing.
- [U 10278](#) (Chrome finish)



- Qty: 1 set, with fasteners.
Steel, adjustable, 3 pieces, 4-1/16 in. hole spacing.
- [U 9495](#) (Brass finish)



- Qty: 1, with fasteners.
Steel, 2-1/8 in. hole spacing.
- [E 2467](#) (Brass finish)
 - [E 2433](#) (Chrome finish)
 - [E 2484](#) (Satin nickel finish)
 - [E 2788](#) (Bronze finish)
 - [E 2795](#) (Matte black finish)



- Qty: 1, with fasteners.
Solid brass, 2-1/8 in. hole spacing, meets ANSI A156.2.
- [E 2284](#) (Polished brass)
 - [E 2299](#) (Stainless steel)
 - [E 2568](#) (Bronze)
 - [E 2794](#) (Matte black finish)



- Qty: 1, with fasteners.
Steel, fits ANSI cut-out, 4-3/16 in. hole spacing.
- [U 9428](#) (Brass finish)
 - [U 9429](#) (Chrome finish)
 - [U 11199](#) (Satin nickel finish)
 - [U 11200](#) (Bronze finish)
 - [U 11450](#) (Matte black finish)



- Qty: 1, with fasteners.
Fits ANSI cut-out (meets ANSI A156.2), 4-3/16 in. hole spacing.
- [U 9484](#) (Solid polished brass)
 - [U 9483](#) (Stainless steel)



- Qty: 1, with fasteners.
Steel, improves security with 3 in. long screws attaching to wall stud.
- [U 9422](#) (Brass)
 - [U 9424](#) (Antique brass)
 - [U 9474](#) (Chrome)



- Qty: 1 set, with fasteners.
Steel, allows hole center flexibility with deadbolt and entry lock installations, improves security with 3 in. long screws attaching to wall stud.
- [U 9989](#) (Brass finish)
 - [U 11041](#) (Satin nickel finish)
 - [U 11158](#) (Bronze finish)

Latch Strikes



Qty: 1, with fasteners.
Steel, 1-1/2 in. deadbolt and latch hole spacing.
E 2435 (Brass finish)



Qty: 1, with fasteners.
Steel, 2-3/8 in. and 4-13/16 in. hole spacings, improves security with 3 in. long screws attaching to wall stud.
U 9426 (Brass finish) **U 94267** (Bronze finish)
U 9476 (Chrome finish) **U 94268** (Matte black finish)
U 94265 (Satin nickel finish)



Qty: 1, with fasteners.
Steel, improves security with 3 in. long screws attaching to wall stud.
U 9427 (Brass finish – 3-5/8 in. to 4 in. latch hole spacing)
U 9480 (Brass finish – 5-1/2 in. to 6 in. latch hole spacing)
U 10385 (Satin nickel finish – 5-1/2 in. to 6 in. latch hole spacing)
U 10538 (Bronze finish – 5-1/2 in. to 6 in. latch hole spacing)
U 11452 (Matte black finish – 5-1/2 in. to 6 in. latch hole spacing)



Qty: 1 set, with fasteners.
1/8 in. thick heavy gauge steel base, 2-1/8 in. hole spacing, improves security with 3 in. long screws attaching to wall stud.
E 2479 (Brass finish) **E 2482** (Bronze finish)
E 2480 (Antique brass finish) **E 2688** (Stainless steel)
E 2483 (Satin nickel finish) **E 2796** (Matte black finish)



Qty: 1, with fasteners.
Steel, improves security with 3 in. long screws attaching to wall stud.
E 2235 (Brass finish) **E 2461** (Satin nickel finish)
E 2285 (Antique brass finish) **E 2462** (Bronze finish)
E 2292 (Nickel finish) **E 2687** (Stainless steel)



Qty: 1, with fasteners.
Steel, improves security with 3 in. long screws attaching to wall stud.
E 2432 (Brass finish)



Qty: 1, with fasteners.
Steel, improves security with 3 in. long screws attaching to wall stud.
U 9535 (Brass finish) **U 11123** (Bronze finish)
U 11122 (Satin nickel finish)



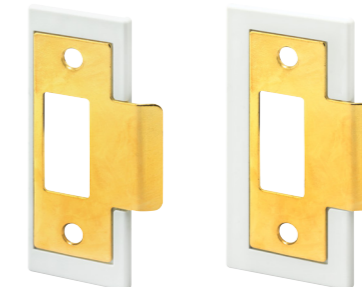
Qty: 1, with fasteners.
Steel, improves security with 3 in. long screws attaching to wall stud.
U 9425 (Brass finish)



Qty: 1 set, with fasteners.
Zinc and steel strike and face plate, screws at base of box secure to framing for added security.
U 9539 (Brass finish) **U 95397** (Bronze finish)
U 95395 (Satin nickel finish)



Qty: 1 set, with fasteners.
Repairs problem latch that “misses the hole” when doors sag or settle. Includes 1 shim and strike for standard interior door (1-3/8 in.) and 1 shim and strike for standard exterior doors (1-3/4 in.).
FAL2BR (Brass finish) **FAL2SN** (Satin nickel finish)
FAL2BZ (Bronze finish)



Door Reinforcers

Qty: 1, with fasteners.

Solid brass or stainless steel, non-recessed, reinforces and repairs doors, assists in preventing forced entry, use on wood or metal doors, accommodates key-in-knob locksets or deadbolts.

U 9547

Finish	Backset	Door Thickness	Reinforcer Width
Brass	2-3/8 in.	1-3/8 in.	3-7/8 in.

U 9548

Brass	2-3/8 in.	1-3/4 in.	3-7/8 in.
-------	-----------	------------------	-----------

U 9549

Brass	2-3/4 in.	1-3/8 in.	4-5/16 in.
-------	------------------	------------------	------------

U 9550

Brass	2-3/4 in.	1-3/4 in.	4-5/16 in.
-------	------------------	------------------	------------

U 9568

Antique brass	2-3/8 in.	1-3/8 in.	3-7/8 in.
---------------	-----------	------------------	-----------

U 9569

Antique brass	2-3/8 in.	1-3/4 in.	3-7/8 in.
---------------	-----------	------------------	-----------

U 9585

Stainless steel	2-3/8 in.	1-3/8 in.	3-7/8 in.
-----------------	-----------	------------------	-----------

U 9586

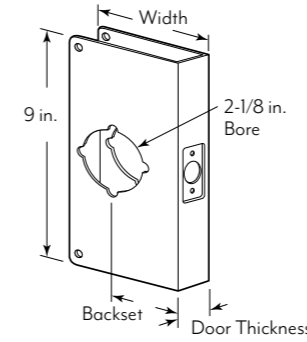
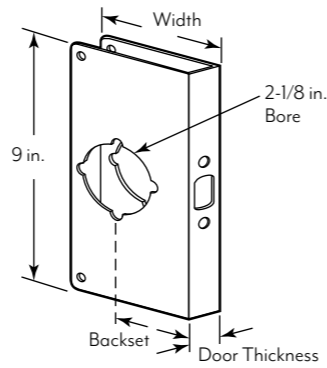
Stainless steel	2-3/8 in.	1-3/4 in.	3-7/8 in.
-----------------	-----------	------------------	-----------

U 9587

Stainless steel	2-3/4 in.	1-3/8 in.	4-5/16 in.
-----------------	------------------	------------------	------------

U 9588

Stainless steel	2-3/4 in.	1-3/4 in.	4-5/16 in.
-----------------	------------------	------------------	------------



Qty: 1, with fasteners.

Solid brass or stainless steel, recessed, reinforces and repairs doors, assists in preventing forced entry, use on wood or metal doors, accommodates key-in-knob locksets or deadbolts.

U 9540

Finish	Backset	Door Thickness	Reinforcer Width
Brass	2-3/8 in.	1-3/8 in.	3-7/8 in.

U 9541

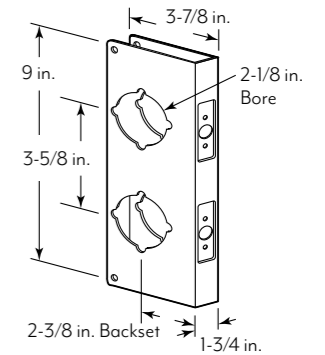
Brass	2-3/8 in.	1-3/4 in.	3-7/8 in.
-------	-----------	------------------	-----------

U 9551

Stainless steel	2-3/8 in.	1-3/4 in.	3-7/8 in.
-----------------	-----------	------------------	-----------

U 9552

Stainless steel	2-3/4 in.	1-3/4 in.	4-5/16 in.
-----------------	------------------	------------------	------------



Qty: 1, with fasteners.

Solid brass, recessed, reinforces and repairs doors, assists in preventing forced entry, use on wood or metal doors, accommodates key-in-knob locksets or deadbolts.

U 9546 (Brass)

U 9559

Finish	Bore	Backset	Hole Spacing	Door Thickness	Reinforcer Width	Reinforcer Height
Brass	2-1/8 in.	2-3/8 in.	3-5/8 in.	1-3/8 in.	3-7/8 in.	9 in.

U 9560

Brass	2-1/8 in.	2-3/8 in.	3-5/8 in.	1-3/4 in.	3-7/8 in.	9 in.
-------	-----------	-----------	-----------	------------------	-----------	-------

U 9537

Brass	2-1/8 in.	2-3/8 in.	5-1/2 in.	1-3/4 in.	3-7/8 in.	10-7/8 in.
-------	-----------	-----------	-----------	------------------	-----------	------------

U 9931

Brass	1-1/2 in. & 2-1/8 in.	2-3/4 in.	5-1/2 in.	1-3/4 in.	4-5/16 in.	10-7/8 in.
-------	-----------------------	------------------	-----------	------------------	------------	------------

U 9479

Brass	2-1/8 in.	2-3/4 in.	5-1/2 in.	1-3/4 in.	4-5/16 in.	10-7/8 in.
-------	-----------	------------------	-----------	------------------	------------	------------

U 9977

Brass	1-1/2 in. & 2-1/8 in.	2-3/4 in.	6 in.	1-3/4 in.	4-5/16 in.	10-7/8 in.
-------	-----------------------	------------------	-------	------------------	------------	------------

U 9577

Antique brass	2-1/8 in.	2-3/8 in.	3-5/8 in.	1-3/4 in.	3-7/8 in.	9 in.
---------------	-----------	-----------	-----------	------------------	-----------	-------

U 9595

Stainless steel	2-1/8 in.	2-3/4 in.	3-5/8 in.	1-3/4 in.	4-5/16 in.	9 in.
-----------------	-----------	------------------	-----------	------------------	------------	-------

U 10539

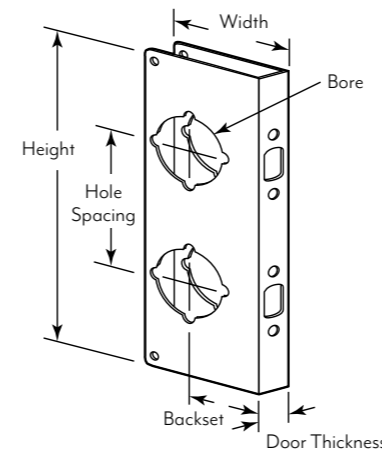
Stainless steel	2-1/8 in.	2-3/8 in.	5-1/2 in.	1-3/4 in.	3-7/8 in.	10-7/8 in.
-----------------	-----------	-----------	-----------	------------------	-----------	------------

U 10546

Stainless steel	2-1/8 in.	2-3/4 in.	5-1/2 in.	1-3/4 in.	4-5/16 in.	10-7/8 in.
-----------------	-----------	------------------	-----------	------------------	------------	------------

U 10750

Bronze	2-1/8 in.	2-3/8 in.	5-1/2 in.	1-3/4 in.	3-7/8 in.	10-7/8 in.
--------	-----------	-----------	-----------	------------------	-----------	------------



Qty: 1, with fasteners.

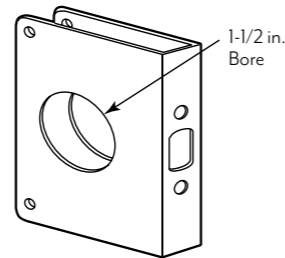
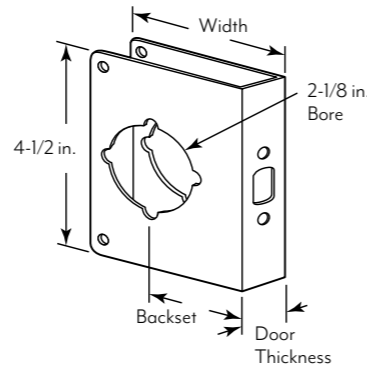
Solid brass or stainless steel, non-recessed, reinforces and repairs doors, assists in preventing forced entry, use on wood or metal doors, accommodates key-in-knob locksets or deadbolts.

Door Reinforcers

Qty: 1, with fasteners.

Solid brass or stainless steel, non-recessed, reinforces and repairs doors, assists in preventing forced entry, use on wood or metal doors, accommodates key-in-knob locksets or deadbolts.

	Finish	Bore	Backset	Door Thickness	Reinforcer Width
U 9565	Brass	1-1/2 in.	2-3/8 in.	1-3/4 in.	3-7/8 in.
U 9978	Brass	1-1/2 in.	2-3/4 in.	1-3/4 in.	4-5/16 in.
U 9555	Brass	2-1/8 in.	2-3/8 in.	1-3/8 in.	3-7/8 in.
U 9556	Brass	2-1/8 in.	2-3/8 in.	1-3/4 in.	3-7/8 in.
U 9558	Brass	2-1/8 in.	2-3/4 in.	1-3/4 in.	4-5/16 in.
U 9572	Antique brass	2-1/8 in.	2-3/8 in.	1-3/8 in.	3-7/8 in.
U 9573	Antique brass	2-1/8 in.	2-3/8 in.	1-3/4 in.	3-7/8 in.
U 9575	Antique brass	2-1/8 in.	2-3/4 in.	1-3/4 in.	4-5/16 in.
U 9589	Stainless steel	2-1/8 in.	2-3/8 in.	1-3/8 in.	3-7/8 in.
U 9590	Stainless steel	2-1/8 in.	2-3/8 in.	1-3/4 in.	3-7/8 in.
U 9591	Stainless steel	2-1/8 in.	2-3/4 in.	1-3/8 in.	4-5/16 in.
U 9592	Stainless steel	2-1/8 in.	2-3/4 in.	1-3/4 in.	4-5/16 in.
U 10744	Bronze	2-1/8 in.	2-3/8 in.	1-3/8 in.	3-7/8 in.
U 10745	Bronze	2-1/8 in.	2-3/8 in.	1-3/4 in.	3-7/8 in.



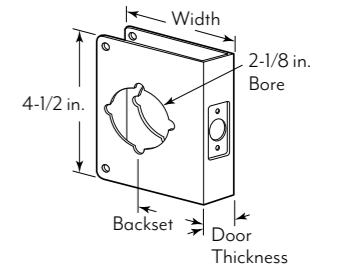
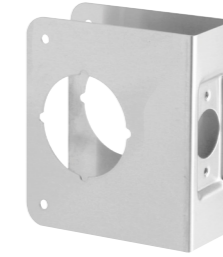
[U 9543](#)

Finish	Backset	Door Thickness	Reinforcer Width
Brass	2-3/8 in.	1-3/8 in.	3-7/8 in.
Brass	2-3/8 in.	1-3/4 in.	3-7/8 in.
Stainless steel	2-3/8 in.	1-3/4 in.	3-7/8 in.
Stainless steel	2-3/4 in.	1-3/4 in.	4-5/16 in.

[U 9544](#)

[U 9553](#)

[U 9554](#)



Qty: 1, with fasteners.

Solid brass or stainless steel, recessed, reinforces and repairs doors, assists in preventing forced entry, use on wood or metal doors, accommodates key-in-knob locksets or deadbolts.

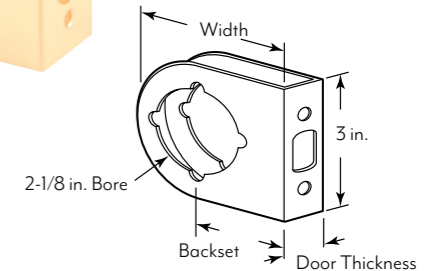
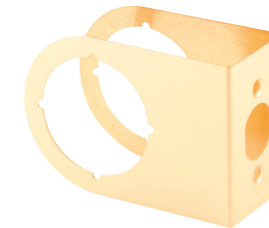
Qty: 1, with fasteners.

Solid brass, non-recessed, reinforces and repairs doors, assists in preventing forced entry, use on wood or metal doors, accommodates key-in-knob locksets or deadbolts.

[U 10260](#)

Finish	Backset	Door Thickness	Reinforcer Width
Brass	2-3/8 in.	1-3/8 in.	3-7/8 in.
Brass	2-3/8 in.	1-3/4 in.	3-7/8 in.

[U 10261](#)



Qty: 1, with fasteners.

Non-recessed, covers unsightly holes and damage, for 1-3/4 in. thick doors.

[U 9492](#) (Stainless steel)

Qty: 1, with fasteners.

Solid brass or stainless steel, non-recessed, reinforces and repairs doors, assists in preventing forced entry, use on wood or metal doors, accommodates key-in-knob locksets or deadbolts.

[U 9566](#)

Finish	Door Thickness
Brass	1-3/8 in.
Brass	1-3/4 in.
Stainless steel	1-3/4 in.

[U 9567](#)

[U 9976](#)



Qty: 1, with fasteners.

Extruded aluminum, used on inswing or outswing doors.

[U 9481](#) (Aluminum anodized)

[U 9482](#) (Gold anodized)





Qty: 1 set, with fasteners.

Heavy gauge steel, wraps around existing door jamb, repairs broken or splintered jambs, white powder coated finish.

- U 10893** (2-3/8 in. Backset – 1-3/4 in. thick doors)
- U 10895** (2-3/4 in. Backset – 1-3/4 in. thick doors)
- U 10902** (Plate only – 1-3/8 in. thick doors, 36 in. long)
- U 10896** (Plate only – 1-3/4 in. thick doors, 48 in. long)



Qty: 1 set, with fasteners.

Heavy gauge steel, dual plate design, repairs broken or splintered jambs, powder coated finish.

- U 11026** (White)



Qty: 1, with fasteners.

Steel, used on outswing doors, fits rim cylinder night locks.

- U 10378** (Brass finish)



6 in. long

12 in. long

Qty: 1 set, with fasteners.

Steel, used on inswing doors, interlocking brackets, for use on wood or metal doors.

- U 9511** (Painted gray – 6 in.)
- U 9512** (Brass finish – 6 in.)
- U 95125** (Satin nickel finish – 6 in.)
- U 9513** (Painted gray – 12 in.)
- U 9514** (Brass finish – 12 in.)



Qty: 1, with fasteners.

Steel, for commercial aluminum entrance doors, 12 in. long.

- U 9507** (Painted gray)



Qty: 1, with fasteners.

Steel, used on outswing doors, for use on 1-3/4 in. thick doors.

- U 9509** (Painted gray) **U 10676** (Stainless steel)
- U 9510** (Brass finish)



7 in. long

Qty: 1, with fasteners.

Steel, used on outswing doors, for use on 1-3/4 in. thick doors.

- U 9500** (Painted gray – 7 in.)
- U 9501** (Painted bronze – 7 in.)
- U 9502** (Brass finish – 7 in.)
- U 9496** (Stainless steel – 7 in.)
- U 9503** (Painted gray – 11 in.)
- U 9504** (Painted bronze – 11 in.)
- U 10027** (Brass finish – 11 in.)



11 in. long

Latch Shields, Adaptor Rings, Cover Plates & Window Locks



Qty: 1, with fasteners.

Steel, fills latch face cut-outs.

U 9520 (1 in. wide – Painted gray)

U 9521 (1-1/8 in. wide – Painted gray)

U 95215 (1-1/8 in. wide – Satin nickel finish)

U 9497 (1-1/8 in. wide – Brass finish)

U 10678 (1-1/8 in. wide – Stainless steel)



Qty: 1 set.

Steel, reduces 2-1/8 in. bore to 1-1/2 in.

U 9529 (Brass finish)



Qty: 1 set, with fasteners.

Steel, 2-5/8 in. O.D., covers 1/2 in. to 2-1/8 in. holes, fits doors up to 1-3/4 in. thick.

U 9515 (Painted gray)

U 9516 (Brass finish)

U 9531 (Chrome finish)

U 10888 (Antique brass finish)

U 10677 (Stainless steel)

U 10446 (Satin nickel finish)

U 10889 (Bronze finish)

U 11453 (Matte black finish)



Qty: 2

Steel, allows conversion of 2-3/8 in. to 2-3/4 in. backset (or 2-3/4 in. to 2-3/8 in.)

U 9524 (Brass finish)

U 9498 (Antique brass finish)

U 9517 (Chrome finish)

U 10322 (Satin nickel finish)

U 10323 (Bronze finish)



Qty: 2

Extruded aluminum, steel screw.

U 9800 (Aluminum)

U 9801 (Black)

U 9802 (White)

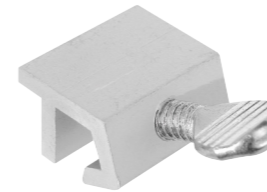


Qty: 2, with wrench.

Extruded aluminum lock, steel screw, plastic tightening wrench.

U 11127 (Aluminum)

U 11128 (White)



Extruded aluminum lock, steel screw.

U 9980 (Aluminum – Qty. 2)

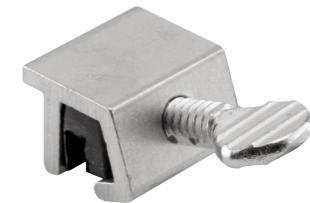
U 9819 (Aluminum – Qty. 4)

U 10806 (Aluminum – Qty. 1 per bag – 100 per box)

U 98198 (Black – Qty. 4)

U 9982 (White – Qty. 2)

U 9823 (White – Qty. 4)



Qty: 2

Extruded aluminum, vinyl insert protects track.

U 10551 (Aluminum)

U 105518 (Black)

U 105512 (White)



Qty: 2

Extruded aluminum, vinyl insert protects track.

U 9820 (Aluminum)

U 9821 (White)



Qty: 2, with wrench.

Extruded aluminum lock, steel hex screw, steel tightening wrench.

U 9810 (Aluminum)

S 4033 (Black)

U 9812 (White)

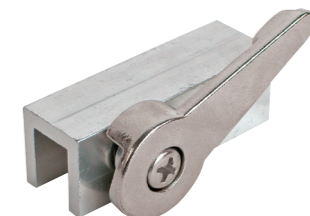


Qty: 2

Zinc diecast, adjustable, for vinyl windows, locks in 3 positions.

U 9809 (White)

U 98098 (Matte black)



Qty: 1

Extruded aluminum, cam action.

U 9824 (Aluminum)

U 98258 (Black)

U 9825 (White)

Window Locks



Qty: 1, with 2 keys.
Diecast, keyed.
U 9839 (White)



Qty: 1
Extruded aluminum, reversible, anti-lift out bar.
U 9833 (Aluminum) **U 9835** (White)



Qty: 1, with fasteners.
Plastic body, steel bolt, 7/8 in. projection, 2-1/2 in. hole spacing.
U 9831 (White)



Qty: 8 pins and 4 keys.
Steel pin with removal key, resists tampering if glass is broken.
U 9845 (Brass finish)



Qty: 1 lock, 2 keys, with fasteners.
Diecast body, hardened steel bolt, keyed, 1-5/16 in. hole spacing.
U 9863 (Brass finish)



Qty: 1 set, with fasteners.
Stamped steel, cam action, 1-3/4 in. hole spacing.
U 9924 (Brass finish) **U 9925** (White)
U 11062 (Satin nickel finish)



Qty: 1 set, 2 keys, with fasteners.
Heavy zinc diecast, cam action, keyed, 2 in. hole spacing.
U 9927 (Brass finish) **U 9928** (White)



Qty: 1 set, 2 keys, with fasteners.
Diecast, cam action, keyed, 2-1/4 in. hole spacing.
U 9933 (White)



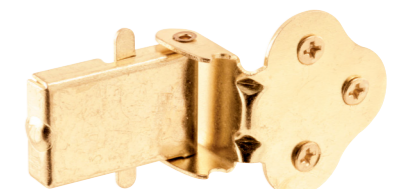
Qty: 1 set, 2 keys, with fasteners.
Diecast, cam action, lever release feature, 1-3/4 in. hole spacing.
U 10670 (White)



Qty: 1 set, with fasteners.
Diecast, 3 different keepers.
U 9935 (Brass finish) **U 9936** (White)



Qty: 2, with fasteners.
Plated steel, 7/16 in. projection, flip action.
U 9938 (Brass finish) **U 10683** (Stainless steel)
U 9929 (Antique brass finish)



Qty: 1, with fasteners.
Plated steel, 5/8 in. projection, flip action.
U 9926 (Brass finish)



Qty: 2 sets, with fasteners.
Plated steel, 3/8 in. projection, 1 in. hole spacing.

U 9939 (Brass finish)



Qty: 1 set, with fastener.
Steel pin with chain and holder, 1/8 in. O.D., 1-5/16 in. length.

U 9857 (Chrome finish)



Qty: 2, with fasteners.
Plastic, flip action, 2-1/4 in. hole spacing.

S 4600 (White)



Qty: 1, with wrench.
Extruded aluminum lock, steel hex screws, steel tightening wrench.

U 9815 (Aluminum) **S 4035** (Black) **U 9817** (White)



Qty: 1 set, with fasteners.
Secondary patio door lock, 2 latches, prevents door from being lifted out of track.

U 11037



Qty: 1
Extruded aluminum housing, double thumbscrew.

U 9805 (Aluminum) **U 9807** (White)
U 98078 (Black)



Qty: 1
Extruded aluminum housing, double thumbscrew.

U 10679 (Aluminum)



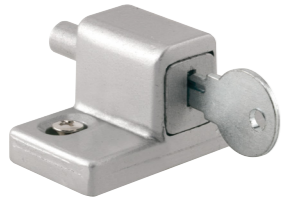
Qty: 1
Zinc diecast, adjustable, for vinyl patio door, locks in 3 positions.

U 10547 (White)

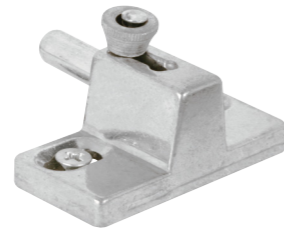


Qty: 1 lock, 2 keys, with fasteners.
Diecast body, zinc bolt, keyed, 1-5/16 in. hole spacing.

U 9861 (Aluminum finish) **U 9862** (White)
S 4005 (Black)



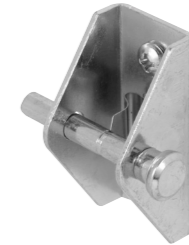
Qty: 1 lock, 2 keys, with fasteners.
Diecast housing, steel bolt, keyed, 1-3/8 in. hole spacing.
U 9870 (Aluminum finish)



Qty: 1, with fasteners.
Diecast housing, steel bolt.
U 9866 (Aluminum finish) **U 9867** (White)



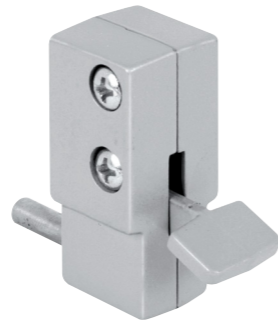
Qty: 1, with fasteners.
Zamak cast housing, aluminum bolt, twist action, 1-5/8 in. hole spacing.
U 9848 (Zinc) **U 9849** (Black) **U 9850** (White)



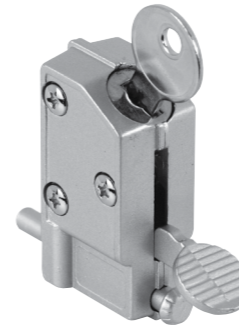
Qty: 1, with fasteners.
Steel housing with hardened steel pin, 2 position push/pull action, 1/2 in. projection.
U 9853 (Aluminum finish) **U 9855** (White)



Qty: 1, with fasteners.
Diecast housing, steel bolt, reversible.
U 9874 (White)



Qty: 1, with fasteners.
Diecast housing, hardened steel bolt, foot operation, 5/8 in. projection, 5/8 in. hole spacing.
U 9877 (Aluminum finish) **U 9879** (White)
S 4041 (Black)



Qty: 1 lock, 2 keys, with fasteners.
Diecast housing, zinc bolt, foot operation, 3/4 in. projection.
U 9882 (Aluminum finish) **U 9884** (White)



Qty: 1, with fasteners.
Plastic body, steel bolt, foot operation.
U 9869 (White)



Qty: 1, with fasteners.
Plastic body, steel bolt, foot operation, 2-1/4 in. hole spacing.
U 9865 (White)



Qty: 1, with fasteners.
Plastic body, steel bolt, 13/16 in. projection.
U 9868 (White)



Qty: 1 set, with fasteners.
Steel pin with chain and holder, 3/16 in. O.D., 2-3/8 in. length.
U 9858 (Chrome)

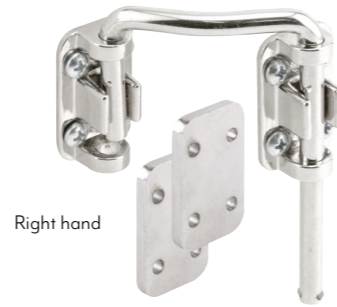


Qty: 1 set, with fasteners.
Steel pin with chain and holder, spring loaded steel ball, 1/4 in. O.D., 2-3/4 in. length.
S 4066 (Chrome)



Qty: 1 lock, 2 keys, with fasteners.
Diecast body, steel bolt, keyed, 1-1/2 in. projection.

U 9997 (Aluminum finish) **U 9919** (White)



Right hand

Qty: 1 set, with fasteners.
Hardened steel rod, diecast bracket and keeper.

U 10537 (Nickel finish – Left hand)
U 10536 (Nickel finish – Right hand)



Qty: 1 set, with fasteners.
Hardened steel rod, diecast bracket and keeper.

U 9846 (Chrome – 1-1/8 in.)
S 4378 (Chrome – 1-7/16 in.)
U 9847 (Chrome – 2-1/8 in.)
S 4380 (Stainless steel – 13/16 in.)



Qty: 2
Clear lucite, 2 piece hinged assembly, adhesive backed.

U 9842 (Clear)



Qty: 1 set, with fasteners.
Aluminum bar, accommodates 28 in. to 48 in. wide inside/ outside patio doors.

U 9920 (Aluminum) **U 9922** (Matte black)
U 9921 (White)



Qty: 1 set, 1 key, with fasteners.
Extruded aluminum bar, stamped steel retainer, plastic retainer with key.

S 4405 (Aluminum – 4 ft. bar – Qty. 50)
S 4220 (White – 4 ft. bar)



Qty: 1 set, with fasteners.
Steel chain and keepers.

U 9905 (Brass finish) **U 103865** (Satin nickel finish)
U 10533 (Antique brass finish) **U 11201** (Classic bronze finish)



Qty: 1 set, with fasteners.
Steel chain, solid brass keepers.

U 9907 (Brass finish) **U 10304** (Satin nickel finish)
U 9913 (Antique brass finish) **U 10305** (Classic bronze finish)
U 9909 (Satin chrome finish) **U 11444** (Matte black finish)



Qty: 1 set, with fasteners.
Steel chain and keepers.
U 9852 (White)



Qty: 1 set, with fasteners.
With sliding bolt.
U 9911 (Solid brass)



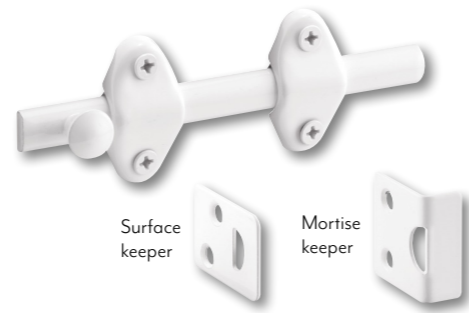
Qty: 1 set, 2 keys, with fasteners.
Steel chain and keepers, keyed.

U 9912 (Brass finish) **U 110937** (Bronze finish)
U 9914 (Antique brass finish) **U 9872** (White)
U 11093 (Satin nickel finish) **U 110938** (Matte black finish)



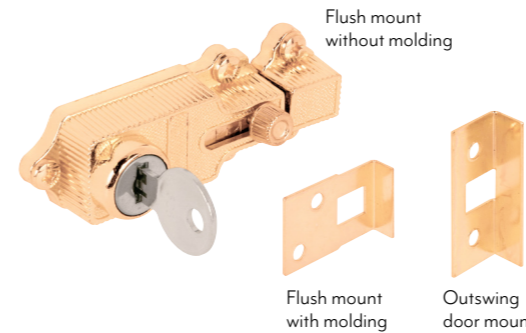
Qty: 1 set, with fasteners.
Solid brass slide bolt, surface and mortise mount keepers.

- [U 9962](#) (Brass – 3 in.)
- [U 9961](#) (Brass – 4 in.)
- [U 10307](#) (Bronze finish – 4 in.)
- [U 10306](#) (Satin nickel finish – 4 in.)
- [U 11448](#) (Matte black finish – 4 in.)



Qty: 1 set, with fasteners.
Steel slide bolt with guide brackets, surface and mortise keepers.

- [U 10267](#) (White)



Qty: 1 set, with fasteners.
Diecast housing, spring loaded, keyed, 2-1/8 in. hole spacing, 3 keepers.

- [U 9885](#) (Brass finish)



Meets Texas building code requirements

Qty: 1 set, with fasteners.
Steel, meets Texas building code requirements.

- [U 10819](#) (Chrome)
- [U 9493](#) (White)
- [U 9494](#) (Gold)



Qty: 1, with fasteners.
Aluminum, designed to withstand 800 lbs. of force, tamper resistant.

- [U 11442](#) (Brass finish)
- [U 10826](#) (Gold anodized)
- [U 10827](#) (Satin nickel)
- [U 11126](#) (Bronze anodized)
- [U 11441](#) (Red bronze)
- [U 11325](#) (Brushed chrome)
- [U 11449](#) (Matte black finish)



Qty: 1, with fasteners.
Aluminum with pull handle, designed to withstand 800 lbs. of force, tamper resistant.

- [U 114706](#) (Brass finish)
- [U 114702](#) (White)
- [U 114705](#) (Satin nickel finish)
- [U 114707](#) (Bronze finish)
- [U 114708](#) (Matte black finish)



Qty: 1, with fasteners.
Steel, flip action.

- [U 9887](#) (Brass finish)
- [U 9873](#) (Antique brass finish)
- [U 10319](#) (Satin nickel finish)
- [U 10321](#) (Bronze finish)
- [U 9888](#) (White)
- [U 103198](#) (Matte black finish)



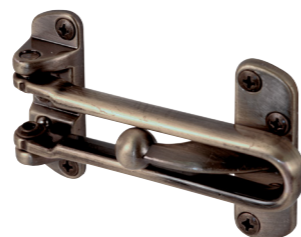
Qty: 5
Adhesive backed.

- [S 4215](#) (Brushed stainless)



Qty: 1 set, with fasteners.
Cast high pressure zamak, defeats lock picking tool by not allowing door to be opened when thumbturn lock is engaged, 3-7/8 in. bar length.

- [U 11315](#) (Brass finish)
- [U 11318](#) (Chrome finish)
- [U 11316](#) (Satin nickel finish)
- [U 11317](#) (Bronze finish)
- [U 11447](#) (Matte black finish)



Qty: 1 set, with fasteners.
Heavy metal casting, (2) 1/16 in. door side riser shims, 3-7/8 in. bar length.

- [U 9897](#) (Brass finish)
- [U 9899](#) (Antique brass finish)
- [U 9900](#) (Chrome finish)
- [U 9901](#) (Brushed chrome finish)
- [U 10308](#) (Satin nickel finish)
- [U 10309](#) (Bronze finish)
- [U 9902](#) (White)
- [U 11446](#) (Matte black finish)

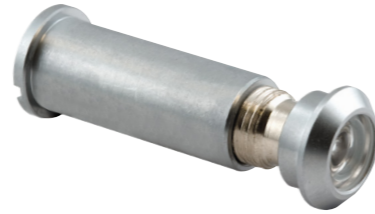


Qty: 1 set, with fasteners.
Zinc diecast, heavy duty, 4-5/8 in. bar length.

- [U 11464](#) (Classic bronze finish)



Qty: 1
Solid brass housing, fits 1-3/8 in. to 2-1/8 in. thick doors.



Qty: 1
Solid brass housing, 160°, fits 1-3/8 in. to 2 in. thick doors.

- [U 9895](#) (Brass)
- [U 9983](#) (Brass – U.L. Listed)
- [S 4365](#) (Satin chrome finish – U.L. Listed)
- [U 10347](#) (Satin nickel finish – U.L. Listed)
- [U 10311](#) (Classic bronze finish – U.L. Listed)



Qty: 1
Solid brass end caps, diecast housing, glass lens, 130°, fits 1-3/4 in. to 2-3/8 in. thick doors.

- [U 9896](#) (Brass)
- [U 10314](#) (Satin nickel finish)



Qty: 1
High-impact plastic, allows arms length viewing, fits 1-3/8 in. to 2 in. thick doors.

- [U 9916](#) (Bronze)
- [U 9917](#) (White)
- [U 9918](#) (Dark gray)

	Finish	View	U.L. Listed	Bore Diameter
U 9892	Brass	180°	No	1/2 in.
U 9893	Brass	180°	No	9/16 in.
U 9891	Brass	200°	Yes	9/16 in.
S 4185	Chrome	180°	No	9/16 in.
S 4366	Satin chrome	200°	Yes	9/16 in.
U 10348	Satin nickel	200°	Yes	9/16 in.
U 10313	Classic bronze	180°	Yes	9/16 in.
U 11455	Matte black	200°	Yes	9/16 in.



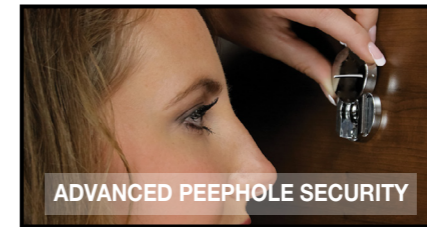
Qty: 2
ABS material, snap-on design, 2 sizes to fit 3/8 in. and 5/8 in. door viewers, safeguards against peephole tampering, blocks view for anyone spying with a reverse peephole viewer.

- [S 5084](#) (White)



Qty: 1, with fasteners.
ABS material, slide-up cover, safeguards against peephole tampering, blocks view for anyone spying with a reverse peephole viewer.

- [S 5086](#) (Satin gray)
- [S 5088](#) (Brown)



ADVANCED PEEPHOLE SECURITY



Qty: 1
Diecast, 5-13/16 in. hole spacing.

- [U 10366](#) (Satin nickel finish)



Qty: 1, with fasteners.
Diecast housing, solid brass viewer, 160°, fits 1-3/8 in. to 1-3/4 in. thick doors.

- [S 4235](#) (Antique brass finish)
- [U 10327](#) (Satin nickel finish)



Qty: 1
Solid brass, inside mount, swivel design.

- [S 4793](#) (Satin chrome finish – 9/16 in.)



Qty: 1
Exterior plate with name tag, 200° glass lens, interior housing has twin bell tones, no batteries needed.

- [U 10814](#)



Qty: 1 set, with fasteners.
Diecast latch, 2-3/8 in. backset, 2 in. O.D. glass knobs with steel base, steel rosettes.

- [E 28326](#) (Brass finish) [E 28327](#) (Bronze finish)
- [E 28325](#) (Satin nickel finish) [E 28328](#) (Matte black finish)



Qty: 1 set.
Glass knobs with steel base, 2 in. O.D., 17/64 in. square spindle.

- [E 28316](#) (Brass finish) [E 28317](#) (Bronze finish)
- [E 28314](#) (Chrome) [E 28318](#) (Matte black finish)
- [E 28315](#) (Satin nickel finish)



Qty: 1 set.
Steel, 2-1/4 in. O.D., 17/64 in. square spindle.

- [E 2280](#) (Brass finish) [E 2498](#) (Satin nickel finish)
- [E 2319](#) (White) [E 2499](#) (Bronze finish)



Qty: 1 set.
2-3/16 in. O.D., 17/64 in. square spindle.

- [E 2297](#) (Solid brass)



Qty: 1 set.
Steel knobs and spindle, silencer bushing.

- [E 2642](#) (Brass finish) [E 2643](#) (Satin nickel finish)



Qty: 1 set.
Steel levers and spindle, silencer bushing.

- [E 2660](#) (Brass finish) [E 2666](#) (Classic bronze finish)
- [E 2663](#) (Satin nickel finish)



Qty: 1 set, 2 keys, with fasteners.
Steel trim plates and case, glass knobs with steel base, keyed, interior use only.

- [E 28336](#) (Brass finish) [E 28337](#) (Bronze finish)
- [E 28335](#) (Satin nickel finish) [E 28338](#) (Matte black finish)



Qty: 1 set, 2 keys, with fasteners.
Steel trim plates, case and knobs, keyed, interior use only.

- [E 2293](#) (Brass finish) [E 2495](#) (Bronze finish)
- [E 2330](#) (Satin nickel finish) [E 2798](#) (Matte black finish)



Qty: 1 set, 2 keys, with fasteners.
Cast steel lock and keeper, steel knobs and rosettes, keyed, surface mount.

- [E 2437](#) (Brass finish)



Qty: 1 set, 2 keys, with fasteners.
Cast steel lock and keeper, steel knobs and rosettes, keyed, surface mount.

- [E 2478](#) (Brass finish)



Qty: 1 set, 2 keys, with fasteners.
Brass plated steel, keyed, spindle hole accepts 1/4 in. to 5/16 in. square spindles, 2-3/8 in. backset.

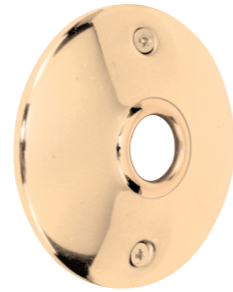
- [E 2294](#) (Brass finish) [E 22947](#) (Bronze finish)
- [E 22945](#) (Satin nickel finish)

Rosettes & Escutcheon Plates, Cylinder Locks & Re-Key A Lock

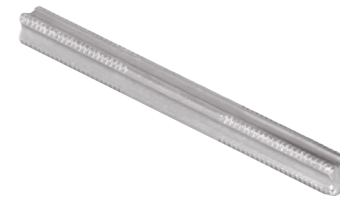


Qty: 2, with fasteners.
Steel, screw mounted.

- E 2282** (2-1/4 in. – Brass finish)
- E 2541** (2-1/2 in. – Brass finish)
- E 2439** (2-1/4 in. – Chrome)
- E 2542** (2-1/2 in. – Satin nickel finish)
- E 2543** (2-1/2 in. – Bronze finish)



Qty: 2, with fasteners.
Screw mounted, 3 in. O.D.
E 2296 (Solid brass)



Steel, threaded, 17/64 in. square.
E 2459 (Qty. 2 per card) **E 2434** (Qty. 10 per box)



Qty: 2, with fasteners.
Steel, 1-3/16 in. and 5-7/8 in. hole spacing.
E 2295 (Brass finish) **E 2718** (Satin nickel finish)



Qty: 1 set, with fasteners.
Diecast latch, 2-3/8 in. backset, steel strike with adjustable tab.
E 2281 (Brass finish) **E 2772** (Bronze finish)
E 2440 (Chrome)



Qty: 1 set, 2 keys, with fasteners.
Kwikset keyway, heavy duty diecast, 5-pin tumbler.
U 9965 (Brass finish)
U 10527 (Brass finish – Qty. 2 pack, keyed alike)
U 11295 (Satin nickel finish) **U 11296** (Classic bronze finish)



Qty: 1 set, 2 keys, with fasteners.
Schlage keyway, heavy duty diecast, 5-pin tumbler.
U 9966 (Brass face)



Qty: 1 lock, 2 keys.
Solid brass, 5 pin tumbler, 2 cams, Segal keyway.
E 2562



Qty: 1 set, 3 keys.
Includes all necessary tools, 3 keys and enough pins to re-key up to six locks, color coded pins for easy re-keying.
E 2400 (Kwikset)

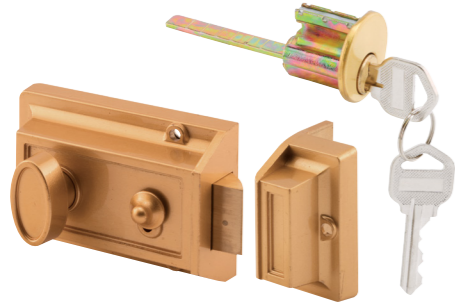


Qty: 1 set, 3 keys.
Includes all necessary tools, 3 keys and enough pins to re-key up to six locks, color coded pins for easy re-keying.
E 2402 (Schlage "C")



Qty: 1 set, 3 keys.
Includes all necessary tools, 3 keys and enough pins to re-key up to six locks, color coded pins for easy re-keying.
E 2404 (Weiser)

Night Locks & Latches & Jimmy-resistant Deadlocks

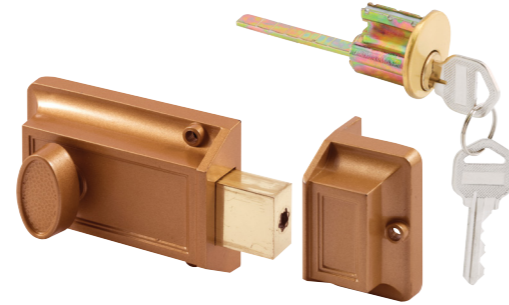


Qty: 1 set, 2 keys, with fasteners.

Diecast, spring latch for automatic locking, single cylinder, 5-pin tumbler, Kwikset® keyway, for 1-3/8 in. to 2-3/8 in. thick doors.

U 9967 (Brass painted)

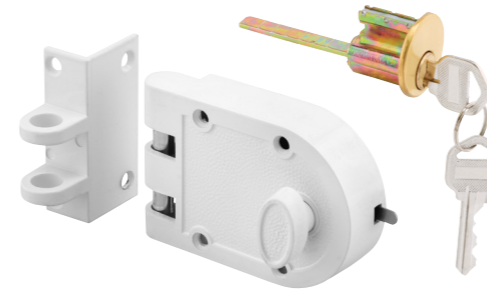
U 10516 (Satin nickel finish)



Qty: 1 set, 2 keys, with fasteners.

Diecast, 5-pin tumbler, Kwikset® keyway.

U 9956 (Brass painted)



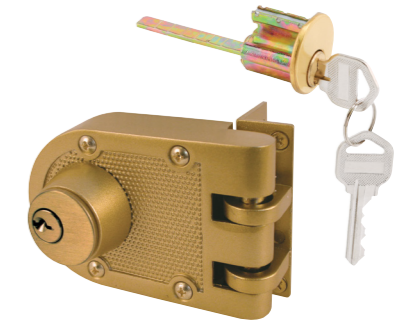
Qty: 1 set, 2 keys, with fasteners.

Diecast, single cylinder, 5-pin tumbler, Kwikset® keyway, for 1-3/8 in. to 2-3/8 in. thick doors.

U 9970 (Brass painted)

U 10817 (Satin nickel finish)

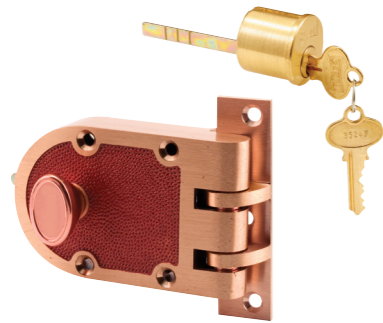
U 9971 (White)



Qty: 1 set, 2 keys, with fasteners.

Diecast, double cylinder, 5-pin tumbler, Kwikset® keyway, for 1-3/8 in. to 2-3/8 in. thick doors.

U 9972 (Brass painted)



Qty: 1 set, 2 keys, with fasteners.

Cast bronze housing and keepers, single cylinder, 5-pin tumbler, Segal® keyway, for 1-3/8 in. to 2-3/8 in. thick doors.

U 10530



Qty: 1 set, 2 keys, with fasteners.

Cast bronze housing and keepers, solid brass 5-pin tumbler cylinder, Segal® keyway.

	Strike Supplied	Finish	Standard Packaging	Keying	Box Qty.
SE 15361	Angle & Flat	Brushed Brass	Clamshell	KD	3
SE 15323	Flat	Brushed Chrome	Clamshell	KD	3
SE 15316	Angle	Brushed Brass	Box	KD	6
SE 15326	Flat	Brushed Brass	Box	KD	6
SE 15366	Angle & Flat	Brushed Brass	Box	KD	6
SE 15726	Flat	Brushed Brass	Box	KA	6
SE 15328	Flat	Brushed Chrome	Box	KD	6
SE 15728	Flat	Brushed Chrome	Box	KA	6
SE 15332	Angle & Flat	Brushed Chrome	Box	KA	6



Flat strike



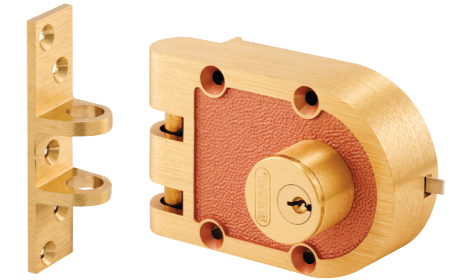
Angle strike



Qty: 1 set, 2 keys, with fasteners.

Cast bronze housing and keepers, double cylinder, solid brass 5-pin tumbler cylinder, Segal® keyway.

	Strike Supplied	Finish	Standard Packaging	Keying	Box Qty.
SE 19361	Angle & Flat	Brushed Brass	Clamshell	KD	3
SE 19316	Angle	Brushed Brass	Box	KD	6
SE 19326	Flat	Brushed Brass	Box	KD	6
SE 19323	Flat	Brushed Chrome	Box	KD	6



Flat strike



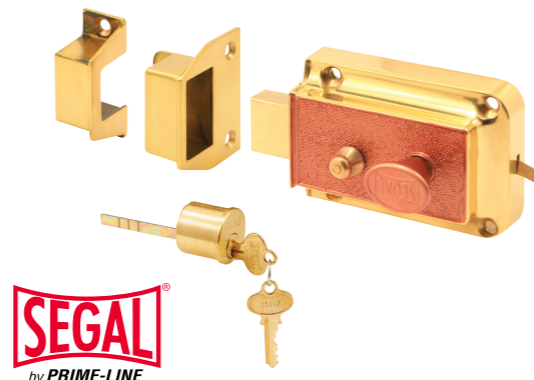
Angle strike



Qty: 1 set, 2 keys, with fasteners.

Cast bronze housing and keepers, solid brass 5-pin tumbler cylinder, Segal® keyway.

SE 13312 (Brushed brass finish)



Qty: 1 set, 2 keys, with fasteners.

Cast bronze housing and keepers, solid brass 5-pin tumbler cylinder, Segal® keyway.

SE 13222 (Brushed brass finish)



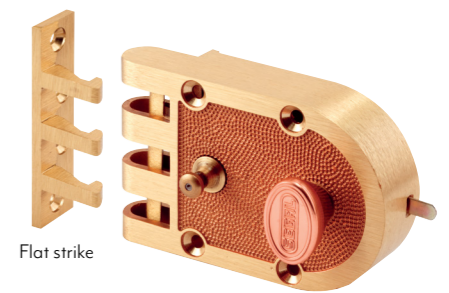
Qty: 1 set, 2 keys, with fasteners.

Cast bronze housing and keepers, automatic relocking bolt, solid brass 5-pin tumbler cylinder, Segal® keyway.

	Strike Supplied	Finish	Standard Packaging	Keying	Box Qty.
SE 14326	Angle & Flat	Brushed Brass	Clamshell	KD	3
SE 14328	Angle & Flat	Brushed Chrome	Clamshell	KD	3
SE 14327	Flat	Brushed Brass	Box	KD	6



Angle strike



Flat strike





Qty: 1 set, 2 keys, with fasteners.

Solid brass knobs and rosettes, high pressure diecast zamak case, keyed, fits 1-3/8 in. to 1-3/4 in. thick doors, 2-1/2 in. backset.

SE 27580 (Polished brass – right handed)

SE 27570 (Polished brass – left handed)



Left hand shown



Qty: 1 set, 2 keys, with fasteners.

Solid brass knobs and rosettes, high pressure diecast zamak case, keyed, fits 1-3/8 in. to 1-3/4 in. thick doors, 2-1/2 in. backset.

SE 26000 (Polished brass – left handed)

SE 26010 (Polished brass – right handed)

SE 27590 (Satin nickel – left handed)

SE 27600 (Satin nickel – right handed)



Left hand shown



Qty: 50

Solid brass, original Segal® keyway.

SE 70001

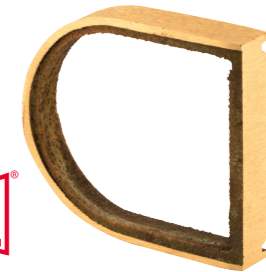


Qty: 1

Cast bronze.

SE 15308 (Brushed brass – 1/4 in.)

SE 15309 (Brushed brass – 1/2 in.)



Brushed brass

Brushed chrome



Qty: 1 lock, 2 keys, with fasteners.

Fits doors 1-1/4 in. to 3 in. thick, 5-pin tumbler.

SE 70002

SE 70003

SE 70007

SE 66007

	Materials	Finish	Standard Packaging	Keying	Box Qty.
SE 70002	Brass	Brushed Brass	Clamshell	KD	6
SE 70003	Brass	Brushed Chrome	Clamshell	KD	6
SE 70007	Brass	Brushed Brass	Box	KD	6
SE 66007	Zinc	Brass Plated	Box	KD	6

Brass plated zinc



Qty: 1 set, with fasteners.

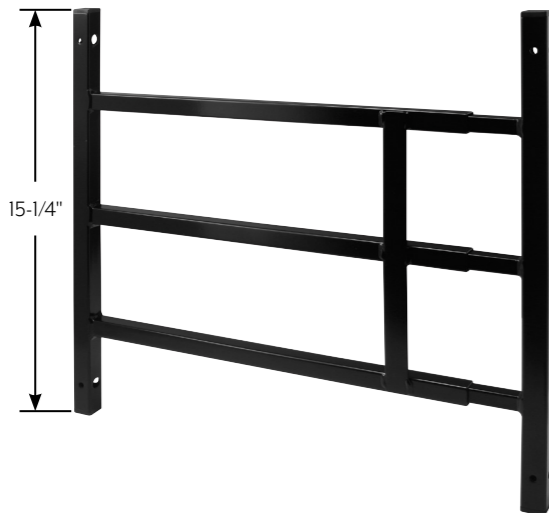
Cast bronze base, riveted steel motorcycle chain.

SE 25300 (Cast bronze)





- Child-safe 3-7/8 in. bar spacing, inside mount
- Telescoping tubular bar design adjusts to fit a wide variety of window openings
- Approved by the New York City Department of Health and Mental Hygiene, HDWG #04-09-2010
- Quick release feature for fast window guard removal in emergencies with distinct 3-step removal procedure to discourage toddlers (egress version only)
- Tamper resistant screws to keep window guard firmly attached
- Easy to install
- U.S. Patent: No. 8443550
- Tested and Met Requirements Specified in ASTM F 2090 Sections 5.2, 5.3, 5.4



15-1/4 in. Fixed 3 Bar Window Grill

Finish	Width Expandable		
	15-3/4 in. to 22 in.	23-1/2 in. to 38 in.	32-1/2 in. to 54 in.
Black	S 4747	S 4751	S 4755
White	S 4748	S 4752	S 4756
Bronze	—	S 4754	S 4758



21-1/4 in. Fixed 4 Bar Window Grill

Finish	Width Expandable		
	15-3/4 in. to 22 in.	23-1/2 in. to 38 in.	32-1/2 in. to 54 in.
Black	S 4759	S 4763	S 4767
White	S 4760	S 4764	S 4768
Bronze	S 4762	S 4766	S 4770



Egress
21-1/4 in. Hinged 4 Bar Window Grill

Finish	Width Expandable		
	14 in. to 22 in.	22 in. to 38 in.	31 in. to 54 in.
Black	S 4771	S 4775	S 4779
White	S 4772	S 4776	S 4780
Bronze	—	S 4778	S 4782

Hasps, Lockout Devices, Showcase Locks



Installs in brick structures, fits 1/2 in. thick plywood, re-usable, plywood greater than 48 in. should be reinforced by attaching 2 in. x 4 in.'s along edge for increased strength.

S 5100 (Zinc plated – 20 per clamshell)
MP5099 (Black – 50 per bag)



Qty: 1 set, 2 keys, with fasteners.
Steel hasp, diecast lock housing, keyed.
U 9951 (Zinc)



Qty: 1 set, 2 keys.
Steel, fits up to 5/16 in. thick glass, adjustable, keyed.
U 9949 (Chrome)



Qty: 1 set, with fasteners.
Cast aluminum, 15/16 in. hole spacing.
U 10881 (Brass finish) **U 10883** (Classic bronze)
U 10882 (Satin nickel finish)



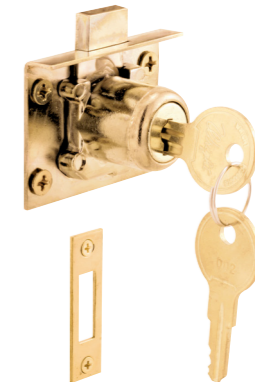
Qty: 1 lock, 2 keys.
Diecast, keyed, deters tampering, for use with a knob handle set.
S 4180 (Gray – carded) **S 41885** (Satin nickel)
EP 4180 (Gray – polybagged) **S 41888** (Matte black)



Qty: 1 lock, 2 keys.
Diecast, keyed, deters tampering, for use with a lever handle set.
S 4181 (Gray)



Qty: 1 set, 2 keys, with fasteners.
Self latching, keyed, Chicago keyway, fits up to a 7/8 in. thick panel.
U 10665 (Brass finish)



Qty: 1 set, 2 keys, with fasteners.
Keyed, Chicago keyway, fits up to a 7/8 in. thick panel.
U 10666 (Brass finish)



Qty: 1 set, 2 keys, with fasteners.
Keyed, Chicago keyway, fits up to a 1 in. thick panel.
U 10667 (Brass finish)



Diecast, keyed, 5/16 in. projection, 1-7/16 in. hole spacing, Yale keyway.
U 9947 (Brass finish – 1 lock, 2 keys per package)
CCEP 9947KA (Brass finish – 1 set, 2 keys per bag, 20 bags per box)



Qty: 1 set, 2 keys.

Diecast housing, stainless steel face, 3 steel cams.

U 9942

U 9944

U 9946

U 9953

U 9953KA

U 9941

U 9941KA

U 9943

U 9943KA

U 9945

U 9945KA

U 9950

U 9950KA

U 11088

U 11089

	Finish	Max. Door Thickness	Cylinder Length	Keyed Alike
U 9942	Brass	5/16 in.	5/8 in.	No
U 9944	Brass	9/16 in.	7/8 in.	No
U 9946	Brass	13/16 in.	1-1/8 in.	No
U 9953	Brass	1 in.	1-3/8 in.	No
U 9953KA	Brass	1 in.	1-3/8 in.	Yes
U 9941	Chrome	5/16 in.	5/8 in.	No
U 9941KA	Chrome	5/16 in.	5/8 in.	Yes
U 9943	Chrome	9/16 in.	7/8 in.	No
U 9943KA	Chrome	9/16 in.	7/8 in.	Yes
U 9945	Chrome	13/16 in.	1-1/8 in.	No
U 9945KA	Chrome	13/16 in.	1-1/8 in.	Yes
U 9950	Chrome	1 in.	1-3/8 in.	No
U 9950KA	Chrome	1 in.	1-3/8 in.	Yes
U 11088	Classic Bronze	13/16 in.	1-1/8 in.	No
U 11089	Classic Bronze	1 in.	1-3/8 in.	No



Qty: 1 lock, 2 keys, with fasteners.

Steel, offset key cylinder, 1/4 in. projection, 1-7/16 in. hole spacing.

S 4048 (Brass finish – carded) **S 4048C** (Brass finish – clam)



Qty: 1 lock, 2 keys, with fasteners.

Steel, offset key cylinder, 5/16 in. projection.

S 4049 (Brass finish)



Qty: 1 lock, 2 keys, with fasteners.

Steel, offset key cylinder, 1/2 in. projection.

S 4086 (Brass finish)

CCEP 9946KA

CCEP 9941KA

CCEP 9943KA

CCEP 9945KA

CCEP 9950KA

	Finish	Max. Door Thickness	Cylinder Length
CCEP 9946KA	Brass	13/16 in.	1-1/8 in.
CCEP 9941KA	Chrome	5/16 in.	5/8 in.
CCEP 9943KA	Chrome	9/16 in.	7/8 in.
CCEP 9945KA	Chrome	13/16 in.	1-1/8 in.
CCEP 9950KA	Chrome	1 in.	1-3/8 in.



Qty: 1 set, 2 keys per bag, 20 bags per box.

Diecast housing, stainless steel face, 3 steel cams, keyed alike.



Counter clockwise rotation

Qty: 1 set, 2 keys.

Diecast cylinder with dust cover, spring steel locking clip, steel cam, fits Auth Electric.

S 4302

Qty: 1 set, 2 keys.

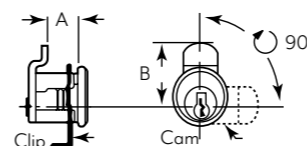
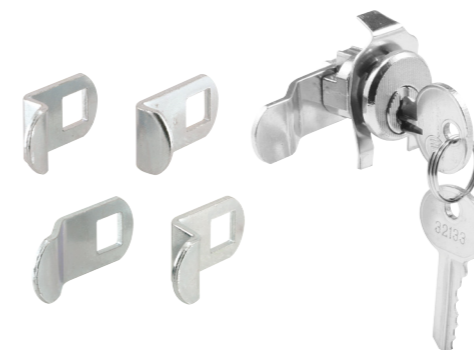
Diecast cylinder, 5-pin cylinder, 5 steel cams.

S 4140 (Nickel – carded)

U 9940 (Brass)

S 4140C (Nickel – clam)

Replaces	Dimensions		Turn to Open	Locked Cam Position
	A	B		
American Device	7/16 in.	1-7/16 in.	90° CCW	Left
Florence	11/32 in.	15/16 in.	90° CCW	Up
Miami-Carey	5/16 in.	13/16 in.	90° CCW	Up
Bommer	7/8 in.	1-7/32 in.	90° CCW	Down
Auth	9/32 in.	1-3/32 in.	90° CCW	Left



Counter clockwise rotation



Clockwise rotation

Qty: 1 set, 2 keys.

Diecast cylinder, 5-pin tumbler, spring steel locking clip, steel cam.

S 4130 (Nickel)

Replaces	Locked Cam Position	Keyway
Florence	Up	Hudson

Mailbox Locks

Clockwise rotation

Qty: 1 set, 2 keys.
Diecast cylinder, 5-pin tumbler, spring steel locking clip, steel cam.

S 4136 (Nickel – carded) **S 4136C** (Nickel – clam)

Replaces	Locked Cam Position	Keyway
Dura-Steel	Down	Hudson

Counter clockwise rotation

Qty: 1 set, 2 keys.
Diecast cylinder, 5-pin tumbler, spring steel locking clip, steel cam.

S 4125 (Nickel – carded) **S 4125C** (Nickel – clam)

Replaces	Locked Cam Position	Keyway
Bommer	Left	Hudson

Counter clockwise rotation

Qty: 1 set, 2 keys.
Diecast cylinder, 5-pin tumbler, spring steel locking clip, steel cam.

S 4127 (Nickel)

Replaces	Locked Cam Position	Keyway
Bommer	Down	Hudson

Counter clockwise rotation

Qty: 1 set, 2 keys.
Diecast cylinder, 5-pin tumbler, spring steel locking clip, steel cam.

S 4128 (Nickel)

Replaces	Locked Cam Position	Keyway
Auth Electric	Left	Hudson

Counter clockwise rotation

Qty: 1 set, 2 keys.
Diecast cylinder, 5-pin tumbler, spring steel locking clip, steel cam.

S 4129 (Nickel – carded) **S 4129C** (Nickel – clam)

Replaces	Locked Cam Position	Keyway
American Device	Left	Hudson

Counter clockwise rotation

Qty: 1 set, 2 keys.
Diecast cylinder, 5-pin tumbler, spring steel locking clip, steel cam.

S 4133 (Nickel)

Replaces	Locked Cam Position	Keyway
Cutler	Left	Hudson

Counter clockwise rotation

Qty: 1 set, 2 keys.
Diecast cylinder, 5-pin tumbler, spring steel locking clip, steel cam.

S 4137 (Nickel – carded) **S 4137C** (Nickel – clam)

Replaces	Locked Cam Position	Keyway
Jensen General	Left	Hudson

Counter clockwise rotation

Qty: 1 set, 2 keys.
Diecast cylinder, 5-pin tumbler, spring steel locking clip, steel cam.

S 4138 (Nickel)

Replaces	Locked Cam Position	Keyway
Bommer Hook	Left	Hudson

Counter clockwise rotation

Qty: 1 set, 2 keys.
Diecast cylinder, 5-pin tumbler, spring steel locking clip, steel cam.

S 4315 (Nickel)

Replaces	Locked Cam Position	Keyway
Florence	Up	National

Clockwise rotation **OR** Counter clockwise rotation

Clockwise rotation shown

Qty: 1 set, 2 keys.
Diecast cylinder, 5-pin tumbler, spring steel locking clip, fits Auth Florence.

S 4710 (Nickel – with dust cover – clockwise rotation – carded)
S 4710C (Nickel – with dust cover – clockwise rotation – clam)
S 4711 (Nickel – counter clockwise rotation)

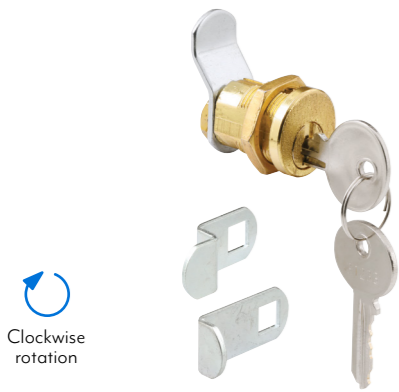
Qty: 1 set, 2 keys.
Diecast cylinder, 5-pin tumbler, spring steel locking clip, 5 steel cams.

S 4634 (Brass finish – carded) **S 4634C** (Brass finish – clam)

Replaces	Dimensions		Turn to Open	Locked Cam Position
	A	B		
American Device	7/16 in.	1-7/16 in.	90° CCW	Left
Florence	11/32 in.	15/16 in.	90° CCW	Up
Miami-Carey	5/16 in.	13/16 in.	90° CCW	Up
Bommer	7/8 in.	1-7/32 in.	90° CCW	Down
Auth	9/32 in.	1-3/32 in.	90° CCW	Left

Counter clockwise rotation

Mailbox Locks, Key Tags & Mail Slot Sleeves

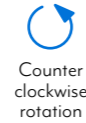
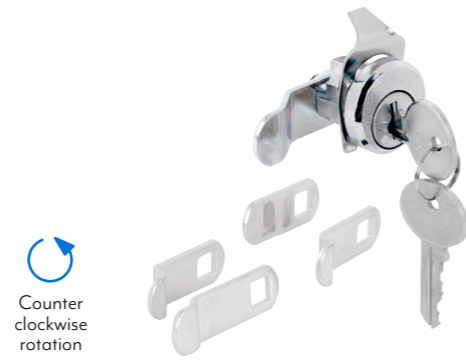


Clockwise rotation

Qty: 1 set, 2 keys.

Diecast cylinder, 3 steel cam and lock nut.

S 4648 (Brass finish – carded) **S 4139** (Chrome – carded)
S 4648C (Brass finish – clam) **S 4139C** (Chrome – clam)

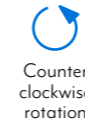


Counter clockwise rotation

Qty: 1 set, 2 keys.

Diecast cylinder with dust cover, 5-pin tumbler, spring steel locking clip, 5 steel cams.

S 4533 (Nickel – with dust cover – carded)
S 4533C (Nickel – with dust cover – clam)

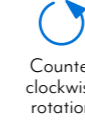
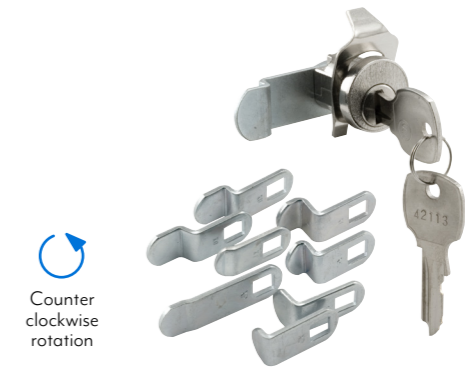


Counter clockwise rotation

Qty: 1 set, 2 keys.

Diecast cylinder with dust cover, 5-pin tumbler, spring steel locking clip, 5 steel cams.

S 4573 (Nickel – carded) **S 4573C** (Nickel – clam)

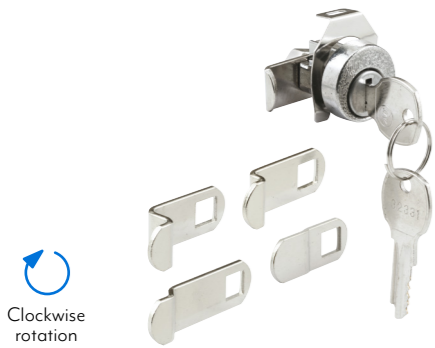


Counter clockwise rotation

Qty: 1 set, 2 keys.

Diecast cylinder with dust cover, 5-pin tumbler, spring steel locking clip, 9 steel cams.

S 4531 (National keyway – carded)
S 4531C (National keyway – clam)



Clockwise rotation

Qty: 1 set, 2 keys.

Diecast cylinder with dust cover, 5-pin tumbler, spring steel locking clip, 5 steel cams.

S 4526 (National keyway – carded)



Qty: 20

Plastic, 1-1/4 in. square.

EP 4269 (Carded) **S 4269** (Polybagged)



Qty: 1, with fasteners.

Stainless steel, made to fit all 11 in. in-door mail slots.

S 4784



Qty: 1, with fasteners.

Stainless steel, made to fit all 7-1/2 in. in-door mail slots.

S 4817

Keyed Item Information

	Product Status	Keyed Alike	Keyed Different	Key Blank	Description
CCEP 9941KA	Active	Yes		Yale Y-II	20 pieces per box
CCEP 9942KA	Disco	Yes		Yale Y-II	20 pieces per box
CCEP 9943KA	Active	Yes		Yale Y-II	20 pieces per box
CCEP 9944KA	Disco	Yes		Yale Y-II	20 pieces per box
CCEP 9945KA	Active	Yes		Yale Y-II	20 pieces per box
CCEP 9946KA	Active	Yes		Yale Y-II	20 pieces per box
CCEP 9950KA	Active	Yes		Yale Y-II	20 pieces per box
CCEP 9953KA	Obsolete	Yes		Yale Y-II	20 pieces per box
E 2293	Active			Contact Prime-Line	Skeleton Key
E 2294	Active			Contact Prime-Line	Skeleton Key
E 2311	Active			Contact Prime-Line	Skeleton Key
E 2330	Active			Contact Prime-Line	Skeleton Key
E 2437	Active			Contact Prime-Line	Skeleton Key
E 2478	Active			Contact Prime-Line	Skeleton Key
E 2494	Pre-Prod			Contact Prime-Line	Skeleton Key
E 2495	Active			Contact Prime-Line	Skeleton Key
E 2496	Active			Contact Prime-Line	Skeleton Key
E 2497	Active			Contact Prime-Line	Skeleton Key
S 4048	Active			N/A	—
S 4049	Active			N/A	—
S 4051	Disco		Yes	ILCO 1180S (XL7)	XL-1 Keyway
S 4053	Obsolete		Yes	ILCO 1180S (XL7)	XL-1 Keyway
S 4054	Obsolete		Yes	ILCO 1180S (XL7)	XL-1 Keyway
S 4055	Obsolete		Yes	ILCO 1180S (XL7)	XL-Keyway
S 4086	Active			N/A	—
S 4125	Active		Yes	ILCO 1003M	Hudson Keyway
S 4126	Obsolete		Yes	ILCO 1003M	Hudson Keyway
S 4127	Active		Yes	ILCO 1003M	Hudson Keyway
S 4128	Active		Yes	ILCO 1003M	Hudson Keyway
S 4129	Active		Yes	ILCO 1003M	Hudson Keyway

	Product Status	Keyed Alike	Keyed Different	Key Blank	Description
S 4130	Active		Yes	ILCO 1003M	Hudson Keyway
S 4131	Obsolete		Yes	ILCO 1003M	Hudson Keyway
S 4132	Disco		Yes	ILCO 1003M	Hudson Keyway
S 4133	Active		Yes	ILCO 1003M	Hudson Keyway
S 4134	Disco		Yes	ILCO 1003M	Hudson Keyway
S 4136	Active		Yes	ILCO 1003M	Hudson Keyway
S 4137	Active		Yes	ILCO 1003M	Hudson Keyway
S 4138	Active		Yes	ILCO 1003M	Hudson Keyway
S 4139	Active		Yes	ILCO 1098 (98X)	Hudson Keyway
S 4140	Active		Yes	ILCO 1003M	Hudson Keyway
S 4297	Obsolete		Yes	ILCO 1003M	Hudson Keyway
S 4180	Active			ILCO 1041GA	Chicago Keyway
S 4299	Disco		Yes	ILCO 1003M	Hudson Keyway
S 4300	Obsolete			ILCO 1003M	Hudson Keyway
S 4301	Disco			ILCO 1003M	Hudson Keyway
S 4302	Active			ILCO 1003M	Hudson Keyway
S 4303	Disco			ILCO 1003M	Hudson Keyway
S 4310	Obsolete		Yes	ILCO 51064A (NA14)	National Keyway
S 4311	Obsolete		Yes	ILCO 51064A (NA14)	National Keyway
S 4312	Obsolete		Yes	ILCO 51064A (NA14)	National Keyway
S 4313	Disco		Yes	ILCO 1180S (XL7)	XL-1 Keyway
S 4314	Obsolete		Yes	ILCO 1180S (XL7)	XL-1 Keyway
S 4315	Active		Yes	ILCO 51064A (NA14)	National Keyway
S 4316	Disco		Yes	ILCO 51064A (NA14)	National Keyway
S 4317	Obsolete		Yes	ILCO 1180S (XL7)	XL-1 Keyway
S 4318	Obsolete		Yes	ILCO 51064A (NA14)	National Keyway
S 4319	Obsolete		Yes	ILCO 51064A (NA14)	National Keyway
S 4322	Obsolete		Yes	ILCO 51064A (NA14)	National Keyway
S 4390	Obsolete		Yes	ILCO 1098M	B1 Keyway
S 4499	Obsolete		Yes	ILCO 1003M	Hudson Keyway

Keyed Item Information

	Product Status	Keyed Alike	Keyed Different	Key Blank	Description
S 4530	Pre-Prod		Yes	ILCO 1180S (XL7)	XL-1 Keyway
S 4531	Active		Yes	ILCO 51064A (NA14)	National Keyway
S 4532	Disco		Yes	ILCO 1003M	Hudson Keyway
S 4533	Active		Yes	ILCO 1003M	Hudson Keyway
S 4634	Active		Yes	ILCO 1003M	Hudson Keyway
S 4648	Active		Yes	ILCO 1003M	Hudson Keyway
U 9838	Active		Yes	ILCO 1098M	BI Keyway
U 9839	Active		Yes	ILCO 1098M	BI Keyway
U 9861	Active		Yes	Yale Y-13	Yale Keyway
U 9863	Active		Yes	Yale Y-11	Yale Keyway
U 9870	Active	Yes		Contact Prime-Line	—
U 9871	Obsolete	Yes		Contact Prime-Line	—
U 9872	Active		Yes	ILCO 1098M	BI Keyway
U 9882	Active		Yes	ILCO 1098M	BI Keyway
U 9883	Obsolete		Yes	ILCO 1098M	BI Keyway
U 9884	Active		Yes	ILCO 1098M	BI Keyway
U 9885	Active		Yes	ILCO 1098M	BI Keyway
U 9912	Active		Yes	ILCO 1098M	BI Keyway
U 9914	Active		Yes	ILCO 1098M	BI Keyway
U 9919	Active		Yes	ILCO 1098M	BI Keyway
U 9927	Active		Yes	ILCO 1098M	BI Keyway
U 9928	Active		Yes	ILCO 1098M	BI Keyway
U 9932	Disco		Yes	ILCO 1041T	Chicago Keyway
U 9933	Active		Yes	ILCO 1041T	Chicago Keyway
U 9940	Active		Yes	ILCO 1003M	Hudson Keyway
U 9941	Active		Yes	Yale Y-11	Yale Keyway
U 9942	Active		Yes	Yale Y-11	Yale Keyway
U 9943	Active		Yes	Yale Y-11	Yale Keyway
U 9944	Active		Yes	Yale Y-11	Yale Keyway
U 9945	Active		Yes	Yale Y-11	Yale Keyway

	Product Status	Keyed Alike	Keyed Different	Key Blank	Description
U 9946	Active		Yes	Yale Y-11	Yale Keyway
U 9947	Active		Yes	Yale Y-13	Yale Keyway
U 9949	Active		Yes	N/A	—
U 9950	Active		Yes	Yale Y-11	Yale Keyway
U 9951	Active		Yes	ILCO 1098M	BI Keyway
U 9952	Obsolete		Yes	ILCO 1098M	BI Keyway
U 9953	Active		Yes	Yale Y-11	Yale Keyway
U 9956	Active			KW-1	Kwikset Keyway
U 9965	Active			KW-1	Kwikset Keyway
U 9966	Active			ILCO SC-1	Schlage Keyway
U 9967	Active			KW-1	Kwikset Keyway
U 9968	Disco			KW-1	Kwikset Keyway
U 9969	Obsolete			KW-1	Kwikset Keyway
U 9970	Active			KW-1	Kwikset Keyway
U 9971	Active			KW-1	Kwikset Keyway
U 9972	Active			KW-1	Kwikset Keyway
U 9973	Obsolete			KW-1	Kwikset Keyway
U 9974	Obsolete			KW-1	Kwikset Keyway
U 9997	Active		Yes	ILCO 1098M	BI Keyway
U 10530	Active			SE1	Segal Keyway
U 10531	Obsolete			SE1	Segal Keyway
U 10665	Active		Yes	ILCO 1041T	Chicago Keyway
U 10666	Active		Yes	ILCO 1041T	Chicago Keyway
U 10667	Active		Yes	ILCO 1041T	Chicago Keyway