

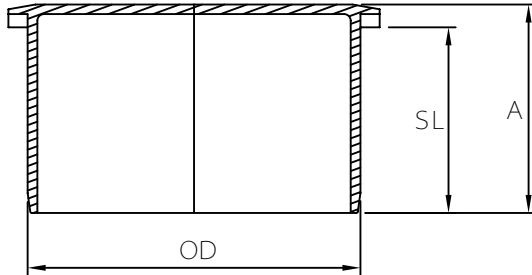


MULTI FITTINGS

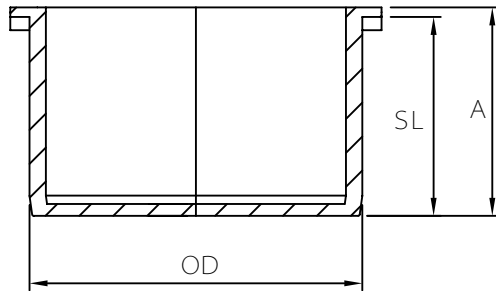
# LAYING LENGTH

ISSUE DATE: OCT 30/17  
SUPERCEDES: MAR 11/05

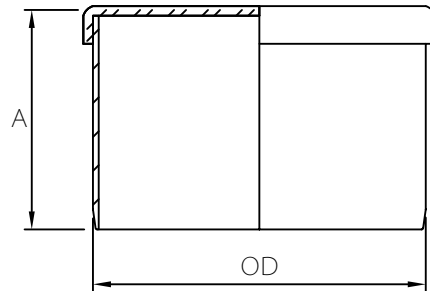
## SPIGOT PLUG



4", 6", 8"



10", 12"



FABRICATED FITTING (F)

## INJECTION MOLDED FITTING (M)

	SIZE	PART NUMBER	A REF	SL REF	OD
M	4	063734	3.125	2.875	4.215
M	6	043736	3.875	3.750	6.275
M	8	043738	5.500	4.000	8.400
M	10	043740	5.750	5.500	10.500
M	12	043741	6.875	6.500	12.500
F	15	043742	13.000	-	15.300
F	18	043743	18.000	-	18.701
F	21	043744	18.000	-	22.047
F	24	043745	18.250	-	24.803
++F	27	043751	24.000	-	27.953

Note: ++ FRP Reinforced