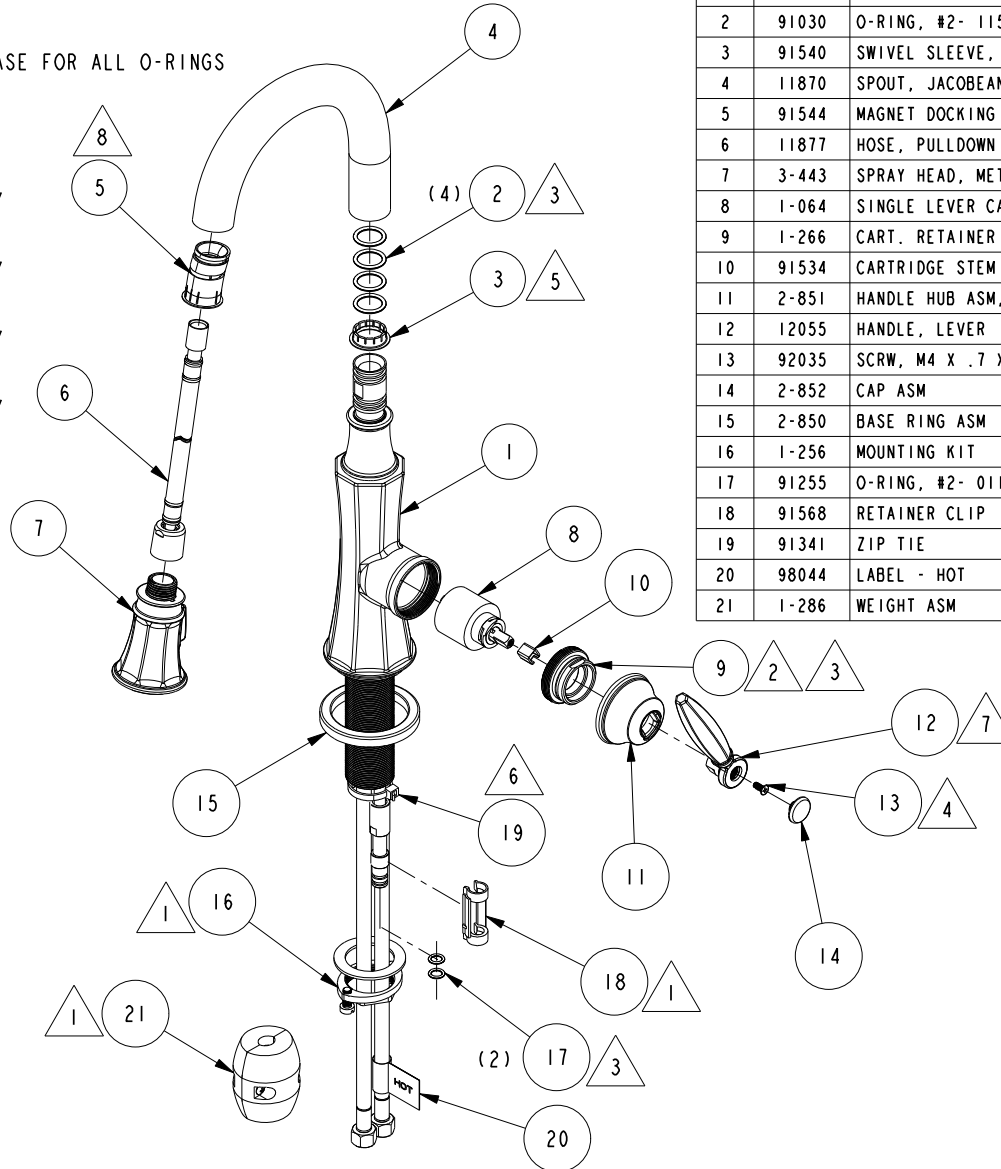
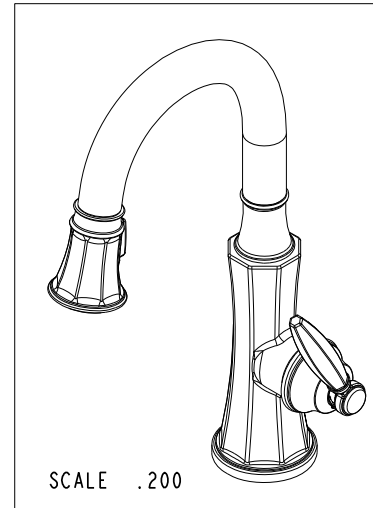


NOTES:

1. PUT THESE ITEMS IN SEPARATE PLASTIC BAGS.
2. TORQUE TO 7.5-8.5 LB-FT.
3. APPLY THIN COAT OF SILICON GREASE FOR ALL O-RINGS BEFORE INSTALLATION.
4. APPLY LOCTITE 242, IF SCREW DOES NOT HAVE NYLON PATCH.
5. SEE WORK INSTRUCTION 91540 ASSY FOR INSTALLATION.
6. SEE WORK INSTRUCTION 91341 ASSY FOR INSTALLATION.
7. SEE WORK INSTRUCTION 12055 ASSY FOR INSTALLATION.
8. SEE WORK INSTRUCTION 91544 ASSY FOR INSTALLATION.



BILL OF MATERIAL (CURRENT LEVEL)

ITEM	PT/ASSY	DESCRIPTION	TYPE	QTY.
1	2-849	MAIN BODY ASM, METROPOLE	ASSEMBLY	1
2	91030	O-RING, #2- 115, EPDM, 65-75 DURO, NSF 61	PART	4
3	91540	SWIVEL SLEEVE, BOTTOM	PART	1
4	11870	SPOUT, JACOBEAN-PREP	PART	1
5	91544	MAGNET DOCKING	ASSEMBLY	1
6	11877	HOSE, PULLDOWN SWIVEL	ASSEMBLY	1
7	3-443	SPRAY HEAD, METROPOLE	ASSEMBLY	1
8	1-064	SINGLE LEVER CARTRIDGE	PART	1
9	1-266	CART. RETAINER ASM	ASSEMBLY	1
10	91534	CARTRIDGE STEM INSERT	PART	1
11	2-851	HANDLE HUB ASM, METROPOLE	ASSEMBLY	1
12	12055	HANDLE, LEVER	PART	1
13	92035	SCRW, M4 X .7 X 10 PHL FLT HD SS	PART	1
14	2-852	CAP ASM	ASSEMBLY	1
15	2-850	BASE RING ASM	ASSEMBLY	1
16	1-256	MOUNTING KIT	ASSEMBLY	1
17	91255	O-RING, #2- 011, EPDM, 65-75 DURO, NSF-61	PART	2
18	91568	RETAINER CLIP	PART	1
19	91341	ZIP TIE	PART	1
20	98044	LABEL - HOT	PART	1
21	1-286	WEIGHT ASM	ASSEMBLY	1

COPYRIGHT 2005 BRASSTECH, INC. THESE DRAWINGS AND THE DESIGNS DEPICTED HEREIN ARE THE PROPRIETARY PROPERTY OF BRASSTECH. ANY USE OR REPRODUCTION IS SUBJECT TO THE EXPRESS APPROVAL OF BRASSTECH. UNAUTHORIZED USE IS STRICTLY PROHIBITED. ALL RIGHTS RESERVED.

**BRASSTECH**  
INCORPORATED  
2001 CARNEGIE AVE.  
SANTA ANA, CA 92705  
(949) 417-5207

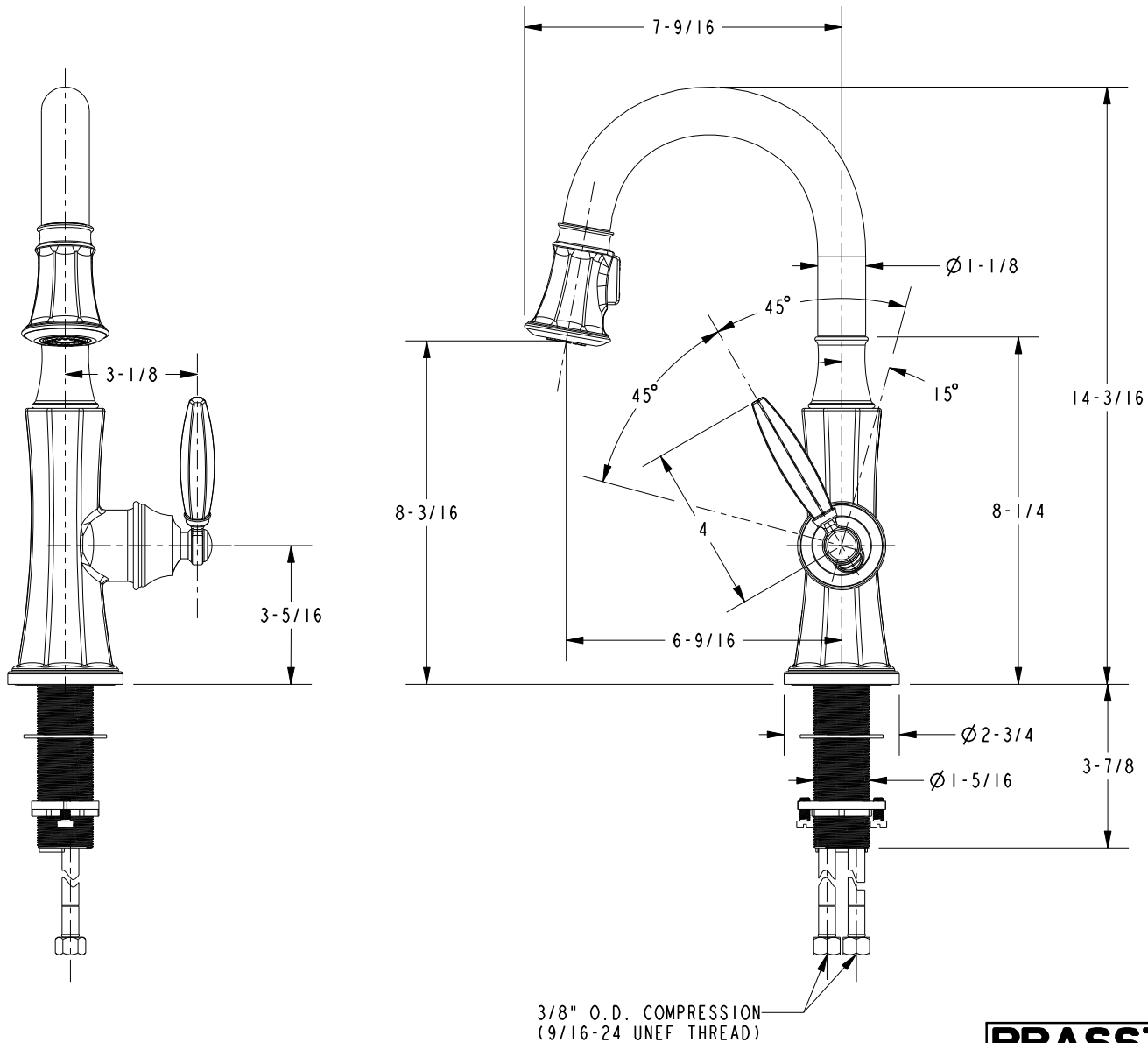
METROPOLE PULL DOWN - KITCHEN FAUCET

ASSY. NO. 1200-5223

SCALE .190 REF. - SHEET 1 OF 2

B	EN-2500	04/22/13
A	EN-2443a	04/18/13
-	EN-2079	05/02/12
REV	REV DESC	DATE

# SPECIFICATION DWG



DIMENSIONS ARE IN INCHES AND AN APPROXIMATION OF A TYPICAL INSTALLATION

COPYRIGHT 2005 BRASSTECH, INC. THESE DRAWINGS AND THE DESIGNS DEPICTED HEREIN ARE THE PROPRIETARY PROPERTY OF BRASSTECH. ANY USE OR REPRODUCTION IS SUBJECT TO THE EXPRESS APPROVAL OF BRASSTECH. UNAUTHORIZED USE IS STRICTLY PROHIBITED. ALL RIGHTS RESERVED.

**BRASSTECH**  
INCORPORATED

2001 CARNEGIE AVE.  
SANTA ANA, CA 92705  
(949) 417-5207

DWG NO.	1200-5223	REV	B
SCALE	.250	REF.	-
SHEET	2	OF	2