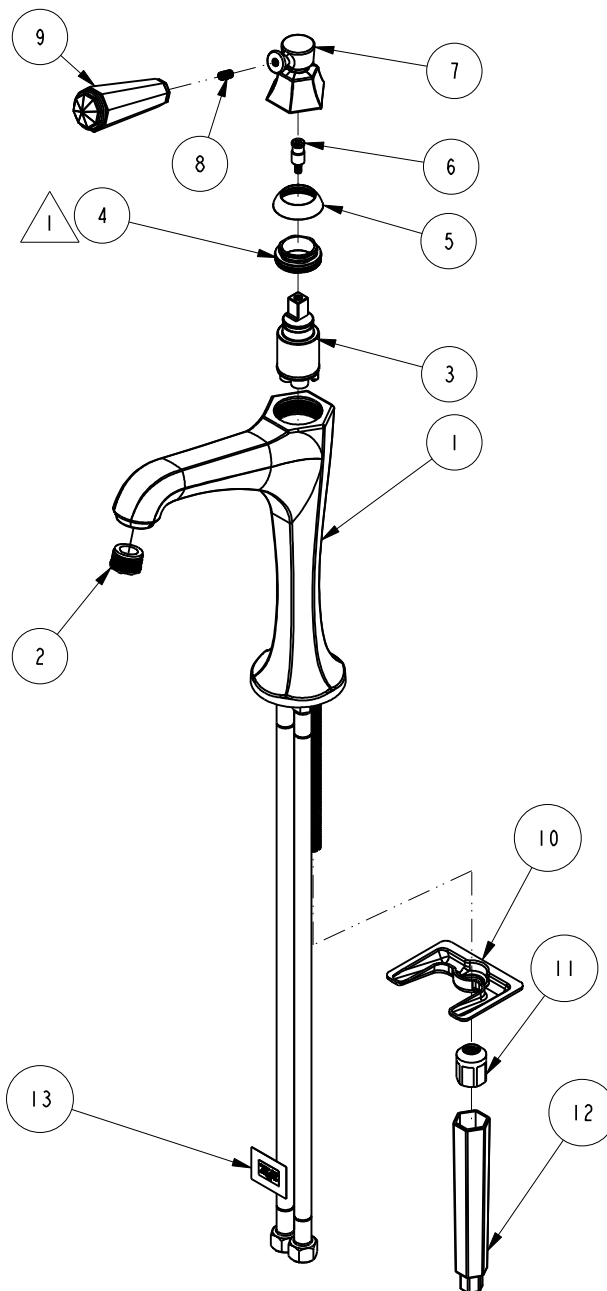
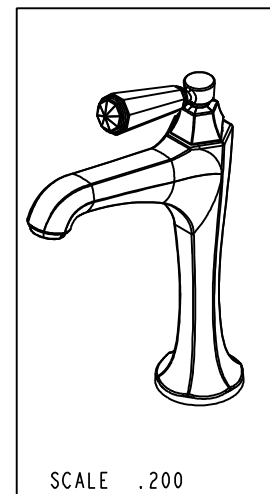


1 WHEN TIGHTENING ITEM 4 IN ASSY,
APPLY 50-60 LB-IN OF TORQUE.



BILL OF MATERIAL (CURRENT LEVEL)

ITEM	PT/ASSY	DESCRIPTION	TYPE	QTY.
1	2-825	SPOUT BODY ASM - LONG	ASSEMBLY	1
2	11710	AERATOR LAMINAR STREAM	PART	1
3	1-259	MIXING VALVE - FX25	ASSEMBLY	1
4	1-275	CARTRIDGE RETAINER ASSEMBLY	ASSEMBLY	1
5	12034	DECORATIVE CAP	PART	1
6	12005	STEM ADAPTOR	PART	1
7	12004	HANDLE HUB	PART	1
8	92025	SCRW, 10-24 X 3/8 SKT HD CUP PT SS	PART	1
9	2-930	CRYSTAL LEVER - HANDLE ASM	ASSEMBLY	1
10	11280	MOUNTING BRACKET	PART	1
11	11285	MOUNTING NUT	PART	1
12	92297	INSTALLATION TOOL, WRENCH	PART	1
13	98109	NEWPORT BRASS LABEL	PART	1



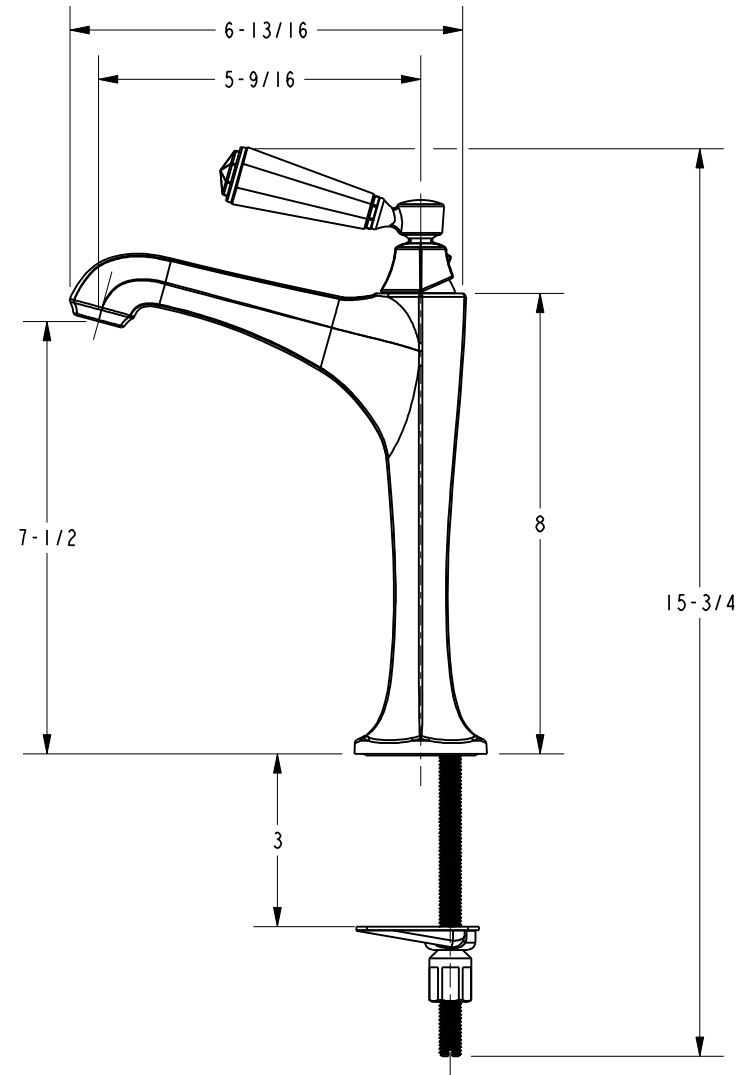
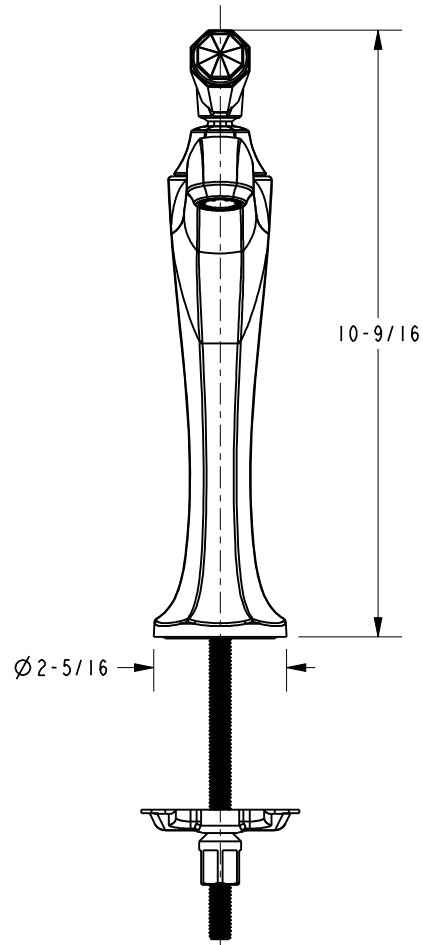
COPYRIGHT 2005 BRASSTECH, INC. THESE DRAWINGS AND THE DESIGNS DEPICTED HEREIN ARE THE PROPRIETARY PROPERTY OF BRASSTECH. ANY USE OR REPRODUCTION IS SUBJECT TO THE EXPRESS APPROVAL OF BRASSTECH. UNAUTHORIZED USE IS STRICTLY PROHIBITED. ALL RIGHTS RESERVED.

BRASSTECH
INCORPORATED
2001 E. CARNEGIE AVE.
SANTA ANA, CA 92705
(949) 417-5207

SINGLE HOLE FAUCET WITH CRYSTAL HANDLE

ASSY. NO.		-	-	-
1233-1		-	EN-2615	10/24/13
SCALE .215	REF. -	SHEET 1 OF 2	REV	REV DESC DATE

SPECIFICATION DWG



DIMENSIONS ARE IN INCHES AND AN APPROXIMATION OF A TYPICAL INSTALLATION

COPYRIGHT 2005 BRASSTECH, INC. THESE DRAWINGS AND THE DESIGNS DEPICTED HEREIN ARE THE PROPRIETARY PROPERTY OF BRASSTECH. ANY USE OR REPRODUCTION IS SUBJECT TO THE EXPRESS APPROVAL OF BRASSTECH. UNAUTHORIZED USE IS STRICTLY PROHIBITED. ALL RIGHTS RESERVED.

BRASSTECH INCORPORATED		2001 CARNEGIE AVE. SANTA ANA, CA 92705 (949) 417-5207
DWG NO.	1233-1	REV
SCALE .300	REF. -	SHEET 2 OF 2