

## 3-Speed Cartridge Circulators

Supersedes: June 5, 2014

Job: \_\_\_\_\_ Engineer: \_\_\_\_\_ Contractor: \_\_\_\_\_ Rep: \_\_\_\_\_

ITEM NO.	MODEL NO.

### Features

- 3-Speed Switch
- Fine tune to system requirements
- Highest performance & starting torque in class
- Heavy duty construction for longer life
- 4-bolt universal flange (0010 only)
- Removable high-flow Integral Flow Check (IFC)  
Prevents gravity flow  
Reduces installation costs  
Improves pump performance
- Replaceable cartridge design
- Quiet, efficient operation
- Self lubricating, no mechanical seal
- Wide range of applications
- Cast Iron or Stainless Steel, flanged construction

### Materials of Construction

Casing:.....0015  
(Cast Iron or Stainless Steel)  
Casing:.....0010  
(Only Cast Iron)  
Integral Flow Check (IFC):  
Body, Plunger .....Acetal  
O-ring Seal.....EPDM  
Spring.....Stainless Steel  
Stator Housing:.....Steel  
Cartridge:.....Stainless Steel  
Impeller:.....Non-Metallic  
Shaft:.....Ceramic  
Bearings:.....Carbon  
O-Ring & Gaskets:.....EPDM

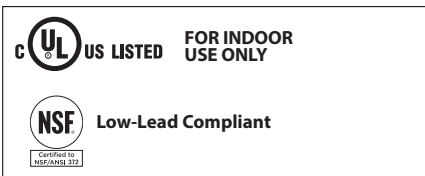
### Model Nomenclature

F – Cast Iron, Flanged  
SF – Stainless Steel, Flanged  
MS – 3-Speed Switch  
IFC – Integral Flow Check

### Performance Data

	0015	0010
Maximum Flow (GPM):	18	31
Maximum Head (FT):	17	11
Minimum Fluid Temperature:	40°F (4°C)	
Maximum Fluid Temperature:	230°F (110°C)	
Maximum Working Pressure:	125 psi	
Connection Sizes:	3/4", 1", 1-1/4", 1-1/2" Flanged	

### Certifications & Listings



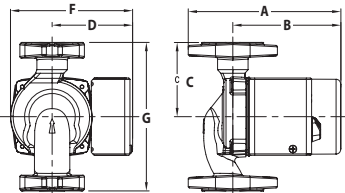
### Application

The **0015 3-Speed pump** is specifically designed for the wide range of flow and head requirements of today's hydronic heating systems. Its 3-Speed switching capability provides fine tuning control to match a wide combination of tube diameters and length of runs. The 0015 3-Speed is a direct replacement for the Grundfos UPS 15-58 3-Speed. The 0015 delivers the highest starting torque in its class and includes a removable, uni-body Integral Flow Check (IFC) that prevents gravity flow, reduces installation costs and improves pump performance. The Stainless Steel 0015 should be used on open, fresh water systems and replaces Grundfos UPS 15-35FC & 15-55FC.

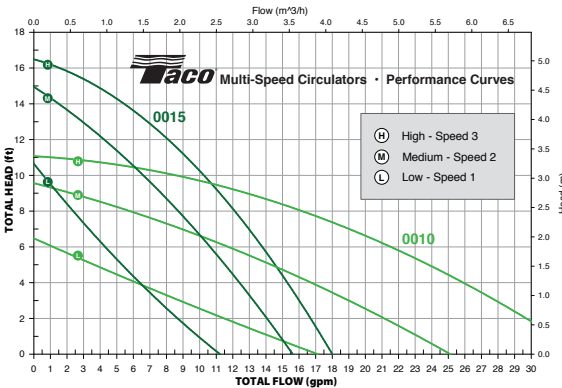
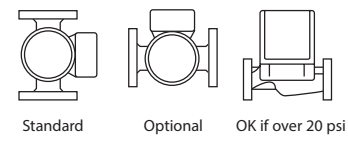
The **0010 3-Speed Service pump** is designed as an ideal replacement circulator for service contractors to use on any emergency "no-heat" call. The 0010 3-Speed replaces most commonly used circulators. Simply install it and set the speed to match the original pump performance. The handy new four bolt flange matches up to any pump regardless of style, type or age.

### Pump Dimensions & Weights \* Stainless Steel

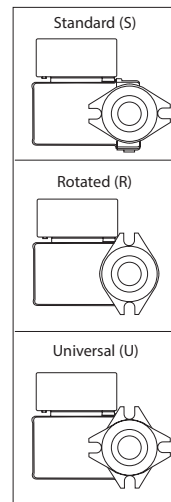
Models	Flange Code	A		B		C		D		F		G		Ship Wt.	
		in.	mm	in.	mm	in.	mm	in.	mm	in.	mm	in.	mm	lbs.	Kg
0015-MSF3- IFC	S	6-1/2	165	4-5/8	118	3-3/16	81	3-7/16	78	5-3/8	137	6-3/8	162	8	3.5
0015-MSF3- IFC*	S	6-1/2	165	4-5/8	118	3-3/16	81	3-7/16	78	5-3/8	137	6-3/8	162	8	3.5
0015-MSF3-1 IFC	R	6	152	4-5/8	118	3-3/16	81	3-7/16	78	5-3/8	137	6-3/8	162	8	3.5
0015-MSF3-1 IFC*	R	6	152	4-5/8	118	3-3/16	81	3-7/16	78	5-3/8	137	6-3/8	162	8	3.5
0010-MSF2-IFC	U	6-11/16	170	4-3/4	120	3-3/16	81	3-7/16	78	5-3/8	137	6-3/8	162	10	4.5



### Mounting Positions



### Flange Orientation



### Electrical Data

Model	Volts	Hz	Ph	Amps			RPM (Speed 3)	HP
				Speed 1	Speed 2	Speed 3		
0015	115	60	1	.54	.74	.85	3250	1/20
0010	115	60	1	.57	.79	.91	3250	1/20

Motor Type: Permanent Split Capacitor Impedance Protected