

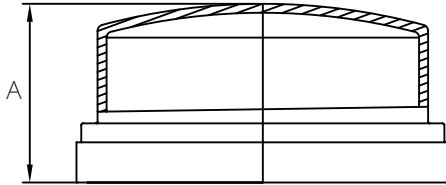


MULTI FITTINGS

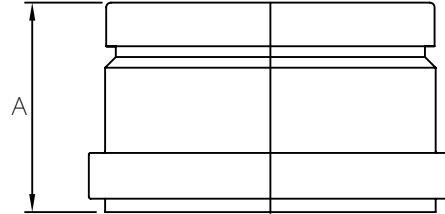
LAYING LENGTH

ISSUE DATE: OCT 30/17
SUPERCEDES: MAR 11/05

GASKET CAP



INJECTION MOLDED FITTING (M)



FABRICATED FITTING (F)

	SIZE	PART NUMBER	A REF
M =	4	063959	2.375
M =	6	043988	3.625
M =	8	063961	6.250
M =	10	063886	5.250
M =	12	043987	5.750
F @	15	043962	13.000
F @	18	043746	17.500
F @	21	043747	19.500
F @	24	043168	20.500
++F @	27	043749	22.000

Note: = Refer to Page G4 for Hub Detail, Type A
 @ Refer to Page G5 for Hub Detail, Fabricated
 ++ FRP Reinforced