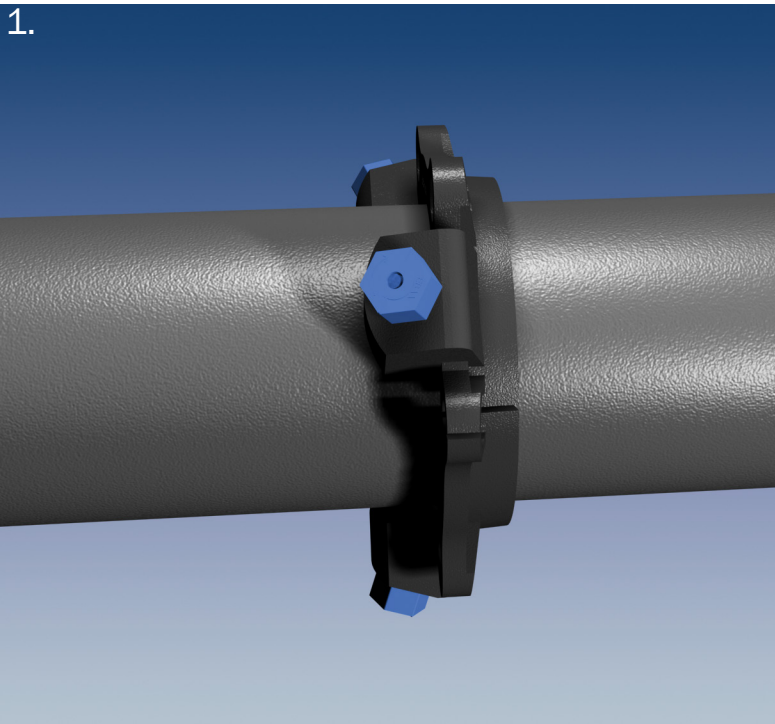
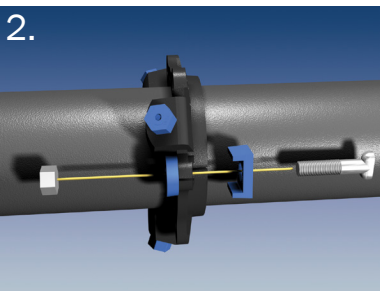


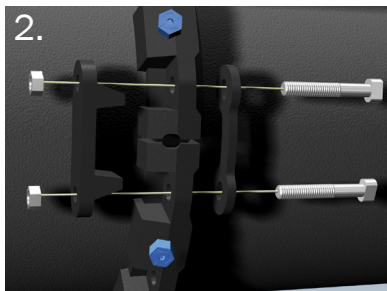
Installation Instructions for Series 1100SDB



1. Remove the clamps from the split gland. Loosely assemble the halves on the pipe by assembling each clamp so that the angled surfaces of the clamp mate with the angled surfaces on each side of the split, and with the backup plate on the opposite side of the gland from the clamp. Insert the long T-bolt (provided) through the clamps and tighten hand tight.



3-8 inch

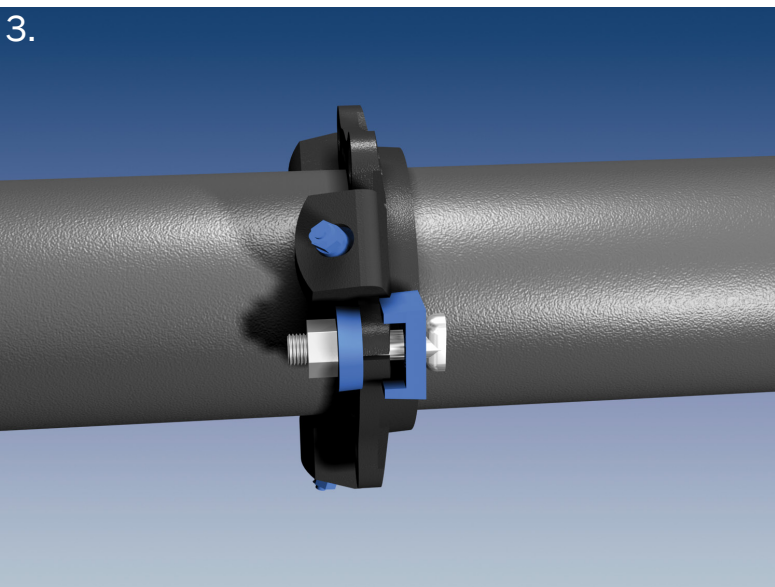


10-48 inch

2. Tighten the T-bolts. Tighten the bolts to the normal range of bolt torque [45-60 ft-lbs for 3 inch, 75-90 ft-lbs for 4 inch through 24 inch, 100-120 ft-lbs 30 inch through 36 inch, and 120-150 ft-lbs for 42 inch and 48 inch]. The use of a torque indicating wrench will facilitate this procedure.

3. Tighten the torque limiting twist-off nuts in a clockwise direction (direction indicated by an arrow on top of nut) until all wedges are in firm contact with the pipe surface. Continue tightening in an alternating manner until all of the nuts have twisted off.

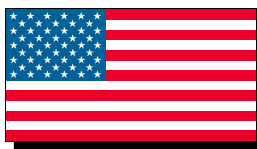
4. If reassembly is required, assemble the joint in the same manner as above, tightening the wedge bolts to 90 ft-lbs.



Important Note:

When used as an anchor within concrete, polyethylene wrap must be used to prevent concrete intrusion into the wedge pocket.

For Submittal Reference Information please refer to the Series 1100



EBAA IRON Sales, Inc.

P.O. Box 857, Eastland, TX 76448

Tel: (254) 629-1731

Fax: (254) 629-8931

(800) 433-1716 within US and Canada

contact@ebaa.com

www.ebaa.com