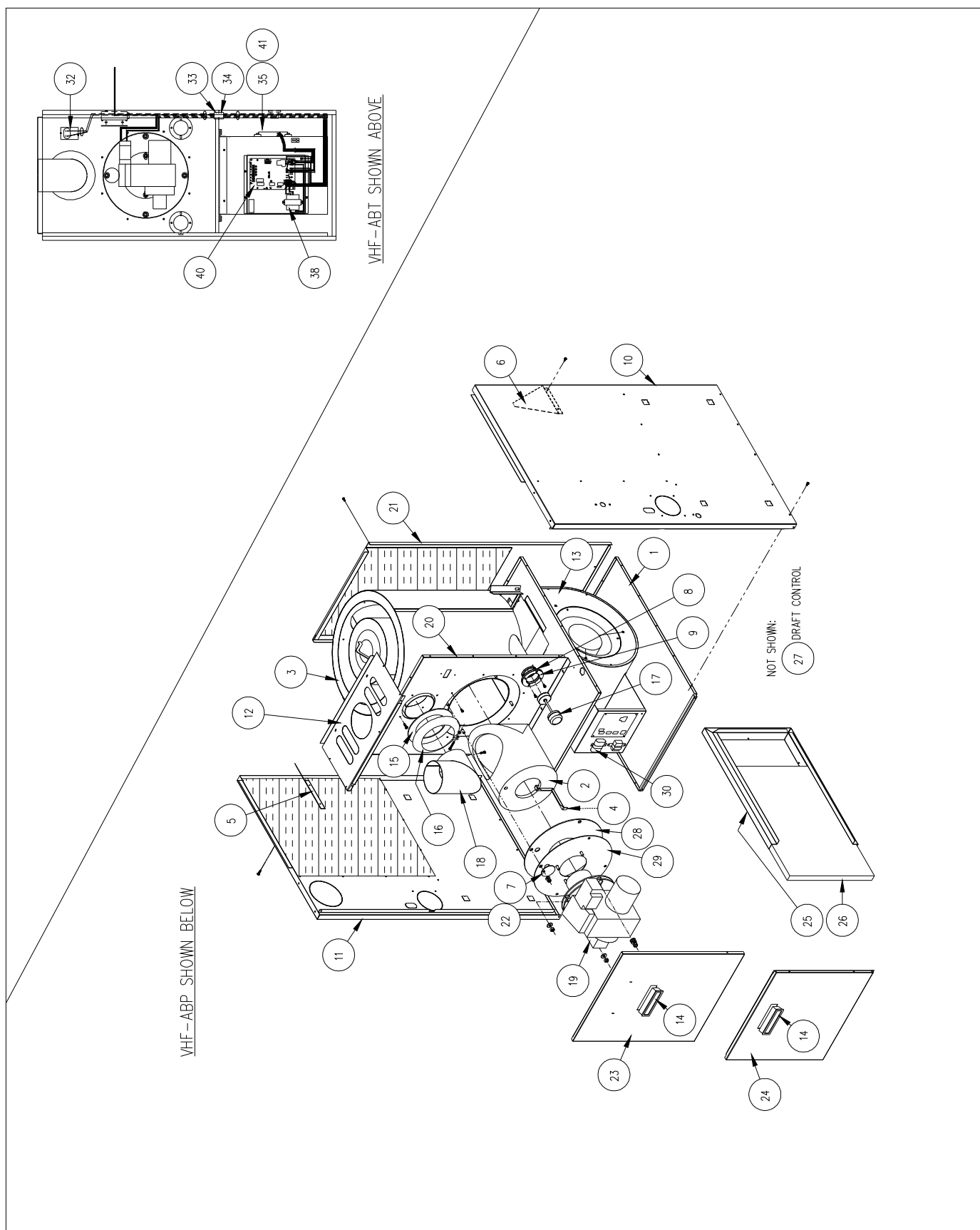


All installations and services must be performed by qualified service personnel.

APPENDIX-A Replacement Parts List



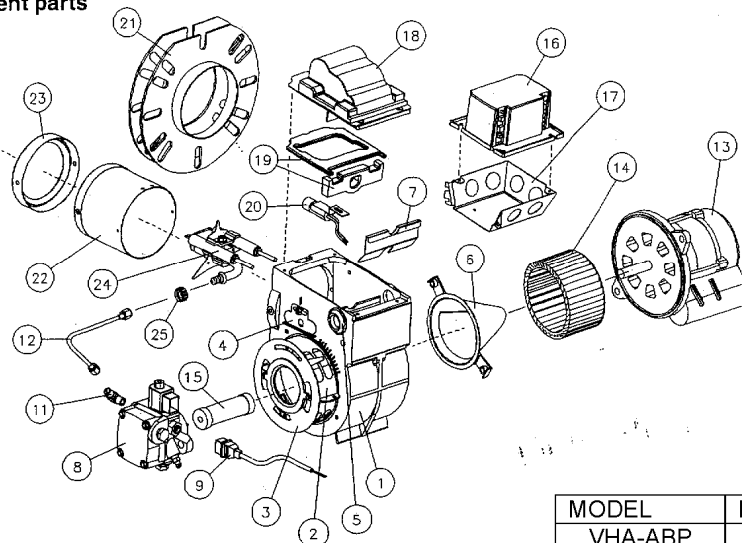
All installations and services must be performed by qualified service personnel.

ITEM	UNIT PARTS DESCRIPTION	VHF-ABP		VHF-ABT	
		PART NO.	QTY.	PART NO.	QTY.
1	BASE	18463	1	18463	1
2	COMBUSTION CHAMBER, SOFT	380691	1	380691	1
3	HEAT EXCHANGER	31924	1	31924	1
4	CHAMBER RETAINER	18557	1	18557	1
5	BAFFLE, LEFT SIDE CASING	11928	1	11928	1
6	BAFFLE, RIGHT SIDE CASING	11926	1	11926	1
7	COVER, OVER-FIRE DRAFT OPENING	18556	1	18556	1
8	GASKET	330215	2	330215	2
9	TRIM PLATE	18553	2	18553	2
10	CASING, RIGHT SIDE	618468-1	1	618468-1E	1
11	CASING, LEFT SIDE	618467-1	1	618467-1E	1
12	PANEL, TOP FRONT	618466-1	1	618466-1	1
13	BLOWER SUB-ASSEMBLY	S00S4157	1	S00S4189	1
13A	BLOWER HSG w\ WHEEL ASSEMBLY	S00S4143	1	S00S4143	1
13B	BLOWER WHEEL	340083	1	340083	1
14	DOOR PULL	320157	2	320157	2
15	GASKET, FLUE COLLAR	330073	1	330073	1
16	DRAW COLLAR	14121	1	14121	1
17	CLEAN-OUT PLUG ASSEMBLY	S00S4471	2	S00S4471	2
18	ELBOW	36050	1	36050	1
19	OIL BURNER, BECKETT AFG EFL201	380704	1	380704	1
20	PANEL, FRONT SEPARATOR	18469	1	618469E	1
21	CASING, REAR	618725-1	1	618725-1E	1
22	GASKET, OFDO COVER	330343	1	330343	1
23	DOOR, FRONT	618470-1	1	618470-1	1
24	DOOR, BLOWER ACCESS	618464-1	1	618464-1E	1
25	FILTER RACK	27373	1	27373	1
26	FILTER	370187	1	370187	1
27	DRAFT CONTROL	370110	1	370110	1
28	GASKET, BURNER MOUNTING PLATE	330212	1	330212	1
29	PLATE, BURNER MOUNTING	31891	1	31891	1
30	CAPACITOR	350073 10/370	1	—	
32	LIMIT SWITCH	350953	1	350953	1
33	WIRE HARNESS, VESTIBULE	350926	1	350926	1
34	WIRE HARNESS, BLWR CMPRTMNT	350927	1	350927	1
35	MOTOR	AOPS7657 1/2 HP PSC	1	350207 1/2 HP CTM	1
37					
38	TRANSFORMER 24v	350464	1	350464	1
39					
40	CONTROL, FAN TIMER	AOPS8380	1	AOPS8380	1
41	MOTOR BRACKET	AOPS7670	1	AOPS7670	1
42					
43					

All installations and services must be performed by qualified service personnel.

EFL201 AFG BECKETT BURNER, 380704

Replacement parts



MODEL	NOZZLE SIZE	PART #
VHA-ABP	.50 x 80° A	380279
VHA-ABT	.60 X 80° A ¹	380398
	.75 X 80° A	380366

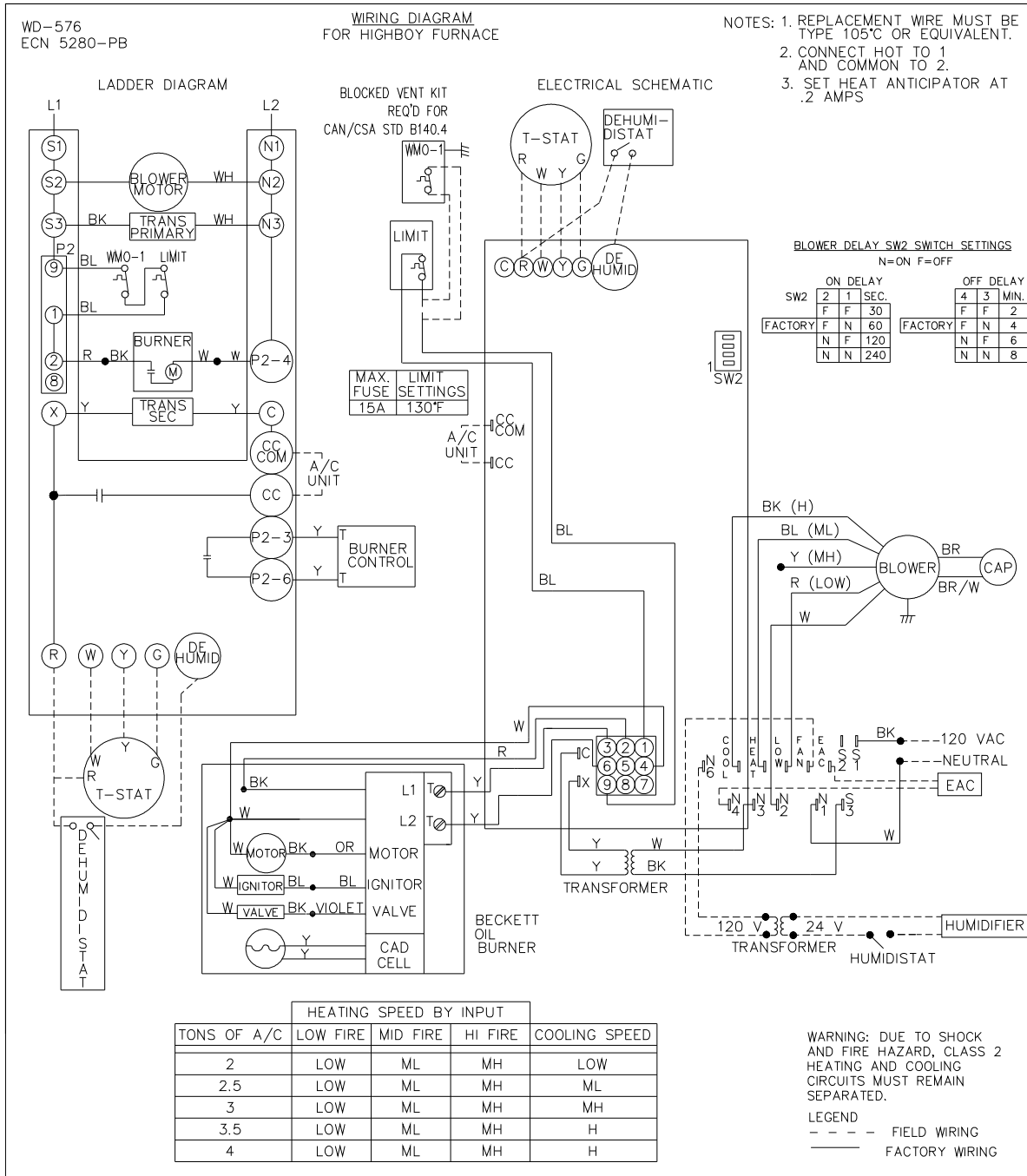
ITEM	DESCRIPTION	BECKETT PART #	TP PART #
1	BURNER HOUSING ASSY.	5874GY	
2	AIR BAND ASSY.	5151502	
3	AIR SHUTTER 4 - SLOT	3709	
4	ESCUTCHEON PLATE	3493	
	SCREW	4292	
5	HOLE PLUG	2139	
6	AIR GUIDE	31231U	
7	LOW FIRING RATE BAFFLE	5880	
8	*PUMP 120PSI	21844	380674
	*SOLENOID	21755	380654
9	VALVE CORD SET	21807U	380653
11	PUMP ELBOW	2256	320815
12	CONNECTION TUBE	5394	380268
13	*MOTOR 1/7 HP 3450 RPM	21805E	380644
14	BLOWER WHEEL 4 1/4 X 2 7/16 TAB	2999	380271
15	*COUPLING	2454	380241
16	*PRIMARY CONTROL	7505B1500	350431
17	ELECTRICAL BOX	5770	
18	*IGNITER W/ GASKETS	51771U	380645
19	IGNITER GASKET KIT	51304	
20	*CAD CELL w/ SOCKET	7006U	350104
21	FLANGE WELDED TO TUBE	N/A	N/A
	GASKET	3616	380270
22	AIR TUBE COMBINATION W/FLG, GUN ASSY & HEAD	58020165	380108
	BLAST TUBE ONLY	AF60YHHSSS	
23	HEAD W/ SHIELD KIT	360063	380320
	ELECTRODE NOZZLE ASSY	NL60YH	380706
24	*ELECTRODES PAIR	5780	380269
	STATIC PLATE, 3 5/8 U	3384	
25	SPLINED NUT	3666	320121
	BULK HEAD FITTING	3488	320120

¹ Nozzle installed in burner.

All installations and services must be performed by qualified service personnel.

APPENDIX-B Wiring Diagrams

VHF-ABP



BLOWER SPEED TAPS

COOL = A/C Tap

HEAT = Heating Tap

LOW = Constant air or Dehumidifier

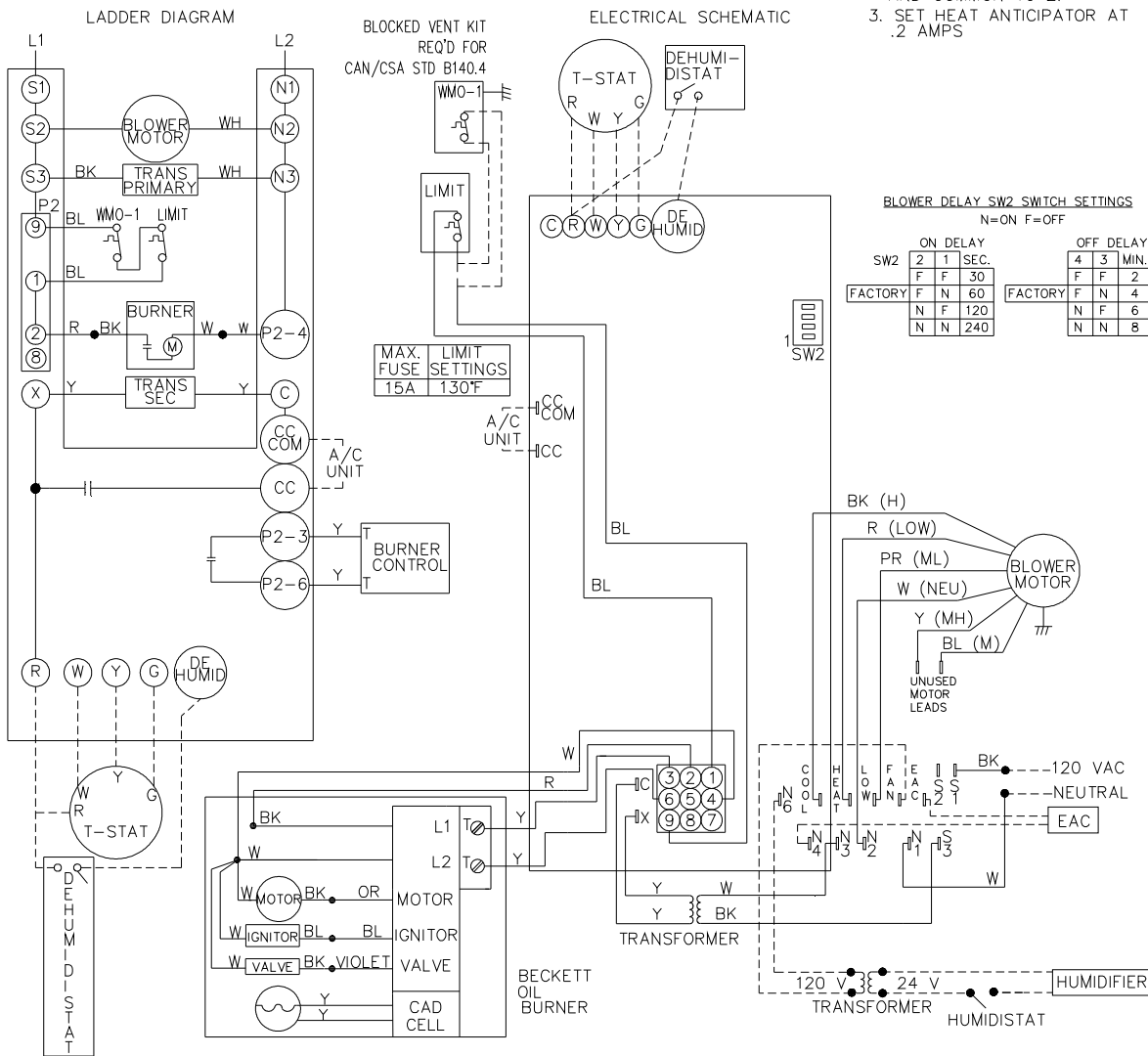
All installations and services must be performed by qualified service personnel.

VHF-ABT

WD-624
ECN 5288-MA

WIRING DIAGRAM FOR HIGHBOY FURNACE

NOTES: 1. REPLACEMENT WIRE MUST BE
TYPE 105°C OR EQUIVALENT.
2. CONNECT HOT TO 1
AND COMMON TO 2.
3. SET HEAT ANTICIPATOR AT
.2 AMPS



	HEATING SPEED BY INPUT			
TONS OF A/C	LOW FIRE	MID FIRE	HI FIRE	COOLING SPEED
2	LOW	LOW	MED	LOW
2.5	LOW	LOW	MED	MED-LOW
3	LOW	LOW	MED	MED
3.5	LOW	LOW	MED	MED-HIGH
4	LOW	LOW	MED	HIGH

WARNING: DUE TO SHOCK
AND FIRE HAZARD, CLASS 2
HEATING AND COOLING
CIRCUITS MUST REMAIN
SEPARATED.

LEGEND
 - - - - FIELD WIRING
 _____ FACTORY WIRING