



Technical Data Sheet

DOC-000710

Revision: A

Date: 10/05/2018

480 Gate Valve Lockout

Description:

Design:

- Durable, lightweight, thermoplastic device performs effectively in extreme conditions
- Surrounds the valve operating handle to protect against accidental valve opening
- Unique, patented outward/inward rotating design allows for easy installation in tight spaces
- Each device rotates into itself and provides compact nesting into the next larger size for storage
- Center knockout can be removed for rising stem gate valves
- Multiple workers can apply safety padlocks
- Includes identification labels in English, Spanish, French



Chemical compatibility

4% Sodium Hypochlorite	Ok	Methylene Chloride	Ok
8% Acetic Acid	Ok	Naphtha	Ok
13% Sodium Metasilicate	Ok	n-Hexane	Ok
Diethyl Ether	Ok	Polydimethyl-siloxane	Ok
Methanol	Ok	Toluene	Ok

NR=Not recommended

Construction Materials

Body: PC-ABS Blend

Dimensions

Overall Height	1.483"/37.66mm
Overall Width	4.25"/108.0mm
Weight	0.158lb/71g

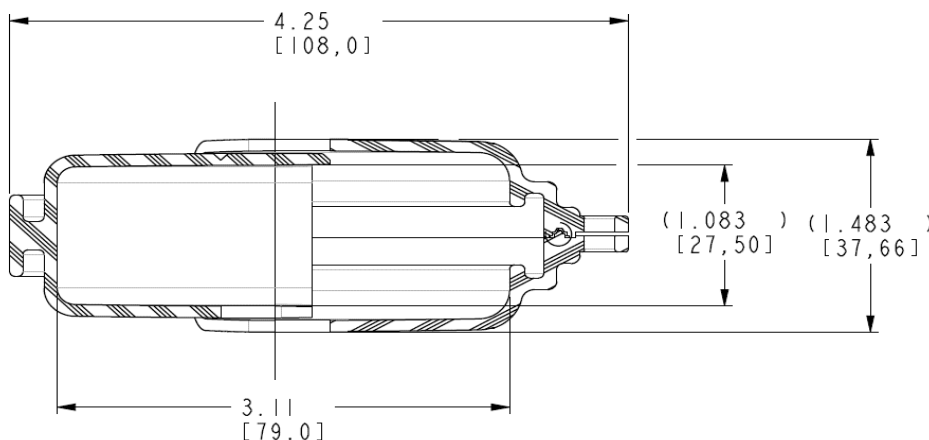
Weatherability (ASTM F883-09, 11)

Salt Spray	Grade 6 (Scale 1-6)
UV Exposure	Grade 6 (Scale 1-6)
Thermal Cycle	ES301 Pass

Compliance

REACH SVHC Compliant

ATEX (By letter of exclusion)



Disclaimer:

All statements, technical information and recommendations contained herein are for general reference purposes only and are based on testing and knowledge that Master Lock believes are reliable.

User is solely responsible for thoroughly testing and evaluating this product to determine its form, fit and function for a particular purpose or application – which can affect the use and performance of the Master Lock product.

Master Lock bases its material content knowledge of its products on information provided by third-parties and has taken and continues to take commercially reasonable steps to provide representative and accurate information, but may not have conducted destructive testing or chemical analysis on incoming materials.

This statement is governed and subject to the provisions of Master Lock's warranty which is available upon request and the limitation of liability provisions in its terms and conditions.

Note: The English version of this sheet is the document of record, all other versions are provided as a courtesy. In the event of data discrepancies, the English version should be used.

© 2017 The Master Lock Company | All Rights Reserved

Material may not be reproduced or distributed in any form without written permission.

The Master Lock Company | 6744 S. Howell Avenue | Oak Creek, WI 53154