

## Plastic Equipment Pads

### Product Specifications

#### Description

PROSELECT Equipment Pads are polypropylene plastic mounting pads designed to support HVAC outdoor units and other outdoor equipment. These pads are a lightweight and environmentally friendly alternative to concrete equipment pads. The rugged design and optimized rib-pattern provide for excellent support on soil and gravel terrain. Available in both 2" and 3", depending on local building code requirements.

#### Application

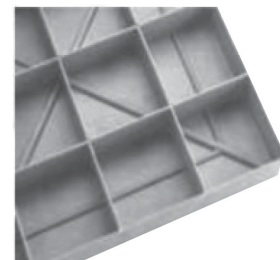
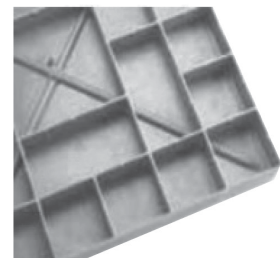
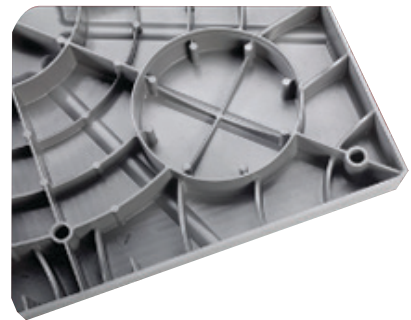
- HVAC outdoor units
- Installation: Pad should be placed on compacted level soil, gravel, or harder surfaces, including but not limited to concrete or asphalt.

#### Features

- Made in the USA
- Lightweight, durable and exceptionally strong
- Textured top surface to reduce slippage
- Concrete gray color
- Unaffected by UV exposure or extreme weather
- Drillable surface for securing units

#### Specifications

- 98% recycled, injection molded polypropylene
- Recommended temperature range: -48°F to 180°F
- Ignition temperature: 725 °F; flash ignition temperature: 698 °F
- Tested per ASTM C67 (flawless performance under 25-cycle testing regimen)
- Tested per ASTM D2299. Does not crack, flake or warp when subjected to:
  - R-22 or R-134a Refrigerant
  - Compressor oil
  - Salt solution (20% by volume)
  - Synthetic canine urine





## Plastic Equipment Pads Product Specifications

### 2" Thick Pads

SKU	Size	Estimated Allowable Load*	Pad Weight	Pallet Quantity
PSCPE24242	24" x 24" x 2"	840 lbs	7 lbs	44
PSCPE24302	24" x 30" x 2"	960 lbs	9 lbs	22
PSCPE24362	24" x 36" x 2"	1080 lbs	11 lbs	22
PSCPE26262	26" x 26" x 2"	920 lbs	8 lbs	22
PSCPE30302	30" x 30" x 2"	1080 lbs	11 lbs	22
PSCPE30362	30" x 36" x 2"	1200 lbs	13 lbs	22
PSCPE30402	30" x 40" x 2"	1320 lbs	15 lbs	22
PSCPE32322	32" x 32" x 2"	1160 lbs	13 lbs	22
PSCPE34342	34" x 34" x 2"	1240 lbs	14 lbs	22
PSCPE36362	36" x 36" x 2"	1320 lbs	16 lbs	22
PSCPE36402	36" x 40" x 2"	1400 lbs	18 lbs	22
PSCPE36482	36" x 48" x 2"	1560 lbs	29 lbs	22
PSCPE38422	38" x 42" x 2"	1480 lbs	19 lbs	22

\*To utilize maximum load rating, the weight should be evenly distributed across the pad surface.

### 3" Thick Pads

SKU	Size	Estimated Allowable Load*	Pad Weight	Pallet Quantity
PSCPE18383	18" x 38" x 3"	1000 lbs	16 lbs	32
PSCPE24243	24" x 24" x 3"	840 lbs	13 lbs	16
PSCPE24363	24" x 36" x 3"	1080 lbs	19 lbs	16
PSCPE24483	24" x 48" x 3"	1320 lbs	14 lbs	32
PSCPE30303	30" x 30" x 3"	1080 lbs	20 lbs	16
PSCPE32323	32" x 32" x 3"	1160 lbs	21 lbs	16
PSCPE32443	32" x 44" x 3"	1400 lbs	30 lbs	16
PSCPE36363	36" x 36" x 3"	1320 lbs	28 lbs	16
PSCPE36403	36" x 40" x 3"	1400 lbs	31 lbs	16
PSCPE36483	36" x 48" x 3"	1560 lbs	36 lbs	16
PSCPE38423	38" x 42" x 3"	1480 lbs	33 lbs	16
PSCPE38703	38" x 70" x 3"	2040 lbs	36 lbs	16
PSCPE40403	40" x 40" x 3"	1480 lbs	34 lbs	16
PSCPE45583	45" x 58" x 3"	1940 lbs	33 lbs	16
PSCPE48483	48" x 48" x 3"	1800 lbs	29 lbs	16
PSCPE50603	50" x 60" x 3"	2080 lbs	40 lbs	16
PSCPE52523	52" x 52" x 3"	1960 lbs	48 lbs	16
PSCPE56583	56" x 58" x 3"	2160 lbs	43 lbs	16

\*To utilize maximum load rating, the weight should be evenly distributed across the pad surface.