

L	<div style="display: flex; justify-content: space-between; align-items: center;"> <div style="text-align: left;"> SMITH® JAY R. SMITH MFG. CO.® DIVISION OF SMITH INDUSTRIES, INC. POST OFFICE BOX 3237 MONTGOMERY, ALABAMA 36109-0237 (USA) TEL: 334-277-8520 FAX: 334-272-7396 www.jrsmith.com </div> <div style="text-align: center;"> <small>MEMBER OF:</small> </div> <div style="text-align: right;"> LOCATION </div> </div>							
	<h2 style="margin: 0;">FINISHED FLOOR CLEANOUTS</h2> <h3 style="margin: 0;">WITH "TWIS-TO-FLOOR®" ADJUSTABLE TOPS</h3> <h4 style="margin: 10px 0 0 0;">ROUND EXTRA HEAVY DUTY NICKEL BRONZE TOP</h4> <p>FUNCTION: Used in hospitals, schools, institutional and industrial buildings where floors are subject to heavy load traffic.</p>							
DRAWING NUMBER S4100	SIZE A	SCALE: NONE	DATE: 2-16-70	APPROVED BY: JM	CHECKED BY: BH	DRAWN BY: RK	WE CAN ASSUME NO RESPONSIBILITY FOR USE OF SUPERSEDED OR VOID DATA	
<p style="text-align: center;">"A" (Pipe Size) = 02(50), 03(75), 04(100) or 05(125)</p>								
<div style="display: flex; justify-content: space-between;"> <div style="width: 45%;"> <p><input type="checkbox"/> Fig. 4100S.....Gasket Seal - ABS Plug</p> <p><input type="checkbox"/> Fig. 4101S.....Gasket Seal - Bronze Plug</p> <p><input type="checkbox"/> Fig. 4103S.....Taper Thread - Bronze Plug</p> <p><input type="checkbox"/> Fig. 4104S.....Taper Thread - ABS Plug</p> </div> <div style="width: 50%;"> <p>(Twis-to-Floor® design shown with gasketed plug.)</p> <p>NOTE: Dimensions shown in parentheses are in millimeters.</p> </div> </div>								
<div style="display: flex; justify-content: space-between;"> <div style="width: 30%;"> <p>REGULARLY FURNISHED:</p> <p>Duco Cast Iron Cleanout with Round Adjustable Scoriated Secured Nickel Bronze Top. Closure Plug Type as Indicated By Figure Number Selected.</p> </div> <div style="width: 35%;"> <p>VARIATIONS:</p> <p><input type="checkbox"/> Flashing Flange -F</p> <p><input type="checkbox"/> Flange with Flashing Clamp -F-C</p> <p><input type="checkbox"/> Vandal Proof Top -U</p> </div> <div style="width: 30%;"> <p>OPTIONAL MATERIALS:</p> <p><input type="checkbox"/> Galvanized Cast Iron -G</p> <p><input type="checkbox"/> Polished Bronze Top -PB</p> </div> </div>								
FIGURE NUMBER	L K J H	12/17/04 07/26/02 05/03/01 10/26/00	Added Width Dimension at Top Corrected Clamp & Flange view Edited Outlet Text New design	JJ JJ JJ JJ	CL CL CL BS	WEIGHT POUNDS	VOLUME CUBIC FEET	FIGURE NUMBER 4100 SERIES
REV.	DATE	DESCRIPTION		BY	CKD. BY			



JAY R. SMITH MFG. CO.
DIVISION OF SMITH INDUSTRIES, INC.
POST OFFICE BOX 3237
MONTGOMERY, ALABAMA 36109-0237 (USA)
TEL: 334-277-8520 FAX: 334-272-7396 www.jrsmith.com



MEMBER OF:

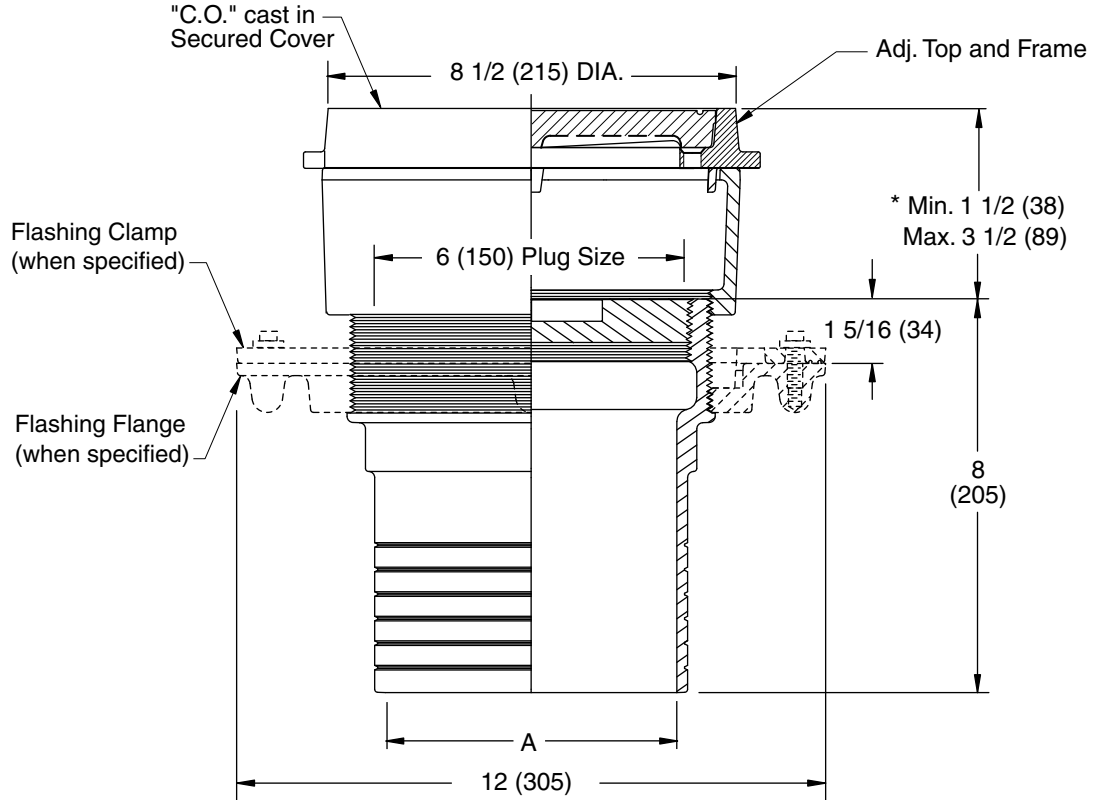


LOCATION

FINISHED FLOOR CLEANOUTS WITH "TWIS-TO-FLOOR®" ADJUSTABLE TOPS

ROUND EXTRA HEAVY DUTY NICKEL BRONZE TOP

FUNCTION: Used in hospitals, schools, institutional and industrial buildings where floors are subject to heavy load traffic.



SPIGOT OUTLET▲
"A" (Pipe Size) = 06(150) & 08(200)

▲ Sized for Service Weight and/or NO-HUB.

* When Flange-F is specified Min. 1 1/2 (38) becomes 2 (51)

"TWIS-TO-FLOOR®" ADJUSTMENT

SPIGOT OUTLET▲

☐ Fig. 4103S.....Taper Thread - Bronze Plug

REGULARLY FURNISHED:

Duco Cast Iron Cleanout with Taper Thread Bronze Plug and Round Adjustable Scoriated Secured Nickel Bronze Top.

VARIATIONS:

- ☐ Flashing Flange -F
- ☐ Flange with Flashing Clamp -F-C
- ☐ Vandal Proof Top -U

OPTIONAL MATERIALS:

- ☐ Galvanized Cast Iron -G
- ☐ Polished Bronze Top -PB

NOTE: Dimensions shown in parentheses are in millimeters.

DRAWING NUMBER
S4100BS

SIZE
A

SCALE:
NONE

DATE:
5-5-06

APPROVED BY:
CEL

CHECKED BY:
CL

DRAWN BY:
RN

4103

FIGURE
NUMBER

WE CAN ASSUME NO RESPONSIBILITY FOR USE OF SUPERSEDED OR VOID DATA

REV.	DATE	DESCRIPTION	BY	CKD. BY

WEIGHT POUNDS	VOLUME CUBIC FEET

FIGURE NUMBER
4103