

CHECK IB912

HORIZONTAL SWING – BRONZE

125 lb. SWP-200 lb. WOG† • General Service
Bronze Disc • Sweat Ends

Dimensions shown are for solder ends.

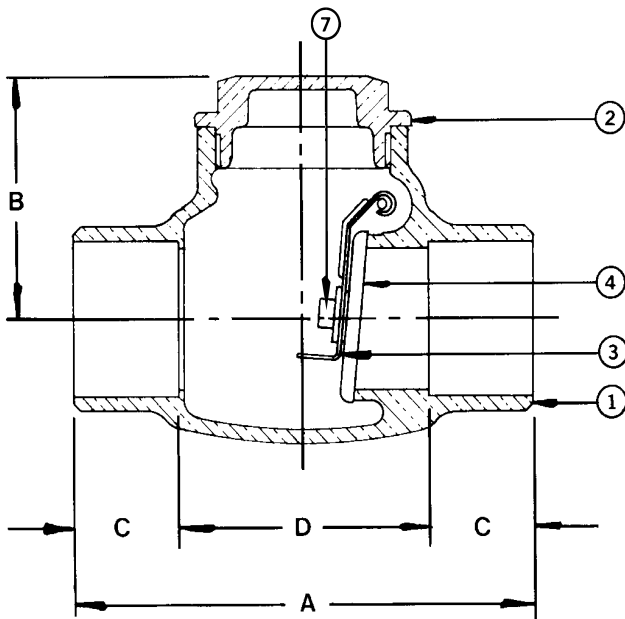
For Steam service specify IB912T (Teflon Disc).

SPECIFICATIONS

IB912	Conforms to: MSS SP-80. Type 3, Class 125, Soldered Ends.
-------	--

MATERIAL LIST

NO.	PART	MATERIAL	SPECIFICATION
1	Body	Bronze	ASTM B 62
2	Cap	Bronze	ASTM B 62
3	Lever	St. Steel	Commercial
4	Disc	Brass	ASTM B 16 3/8" to 3/4" Incl. ASTM B 62 1" to 2" Incl.
5	Pin	St. Steel	Commercial
6	Plug (not shown)	Brass	ASTM B 16
7	Retaining Ring	St. Steel	Commercial



DIMENSIONS - INCHES / MILLIMETERS

Units	Size	A	B	C	D
Inches	3/8	2 1/4	1 7/16	3/8	1 1/2
MM	9.53	57.15	36.53	9.53	38.10
Inches	1/2	2 9/16	1 7/16	1/2	1 9/16
MM	12.70	65.10	36.53	12.70	39.70
Inches	3/4	3 5/16	1 11/16	3/4	1 3/4
MM	19.05	84.15	42.88	19.05	44.45
Inches	1	4	1 31/32	29/32	2 3/16
MM	25.40	101.60	50.01	23.01	55.58
Inches	1 1/4	4 1/4	2 5/32	31/32	2 5/16
MM	31.75	107.95	54.76	24.61	58.75
Inches	1 1/2	4 15/16	2 13/32	1 3/32	2 3/4
MM	38.10	125.43	61.11	27.79	69.85
Inches	2	6 1/8	2 13/16	1 11/32	3 7/16
MM	50.80	155.58	71.45	34.13	87.33
Inches	2 1/2	7 3/8	3 5/8	1 15/32	4 7/16
MM	63.50	187.33	92.08	37.31	112.73
Inches	3	8 1/2	4 3/16	1 21/32	5 3/16
MM	76.20	215.90	106.38	42.07	131.78

† Non-Shock

Rev. 1

BETTER AT EVERY TURN



HAMMONDVALVE

www.hammondvalve.com

The information presented on this sheet is correct at the time of publication. Hammond Valve reserves the right to change design, and/or material specifications without notice. For the most current information access www.hammondvalve.com