



UAPM

Parts List
29-December-2016



*This parts list is current as of the above revision date.
See <http://www.rheempartslists.net/92-42801-UAPM.pdf> for the current revision.*

Condensing Units

Table of Contents

Model Explanation	Page 3
Parts Numbers	
Panels - Miscellaneous (Granite-Steel Gray)	Page 4
Panels - Miscellaneous (Neutra Green)	Page 5
Electrical Group	Page 6
Fan Group	Page 7
Coil Parts	Page 8
Compressor Group	Page 9
Accessories	Page 10
Drawings/Photographs	
Exploded View	Page 11
Control Box Assembly (JAZ)	Page 12
Control Box Assembly (JEZ)	Page 13
Notes	Page 14

MODEL NUMBER EXPLANATION

U	A	P	M	-	0	1	8	J	A	Z
(1)	(2)	(3)	(4)			(5)		(6)	(7)	(8)

- | | |
|---|--|
| <p>(1) TRADEBRAND IDENTIFICATION</p> <p>(2) MODEL
A= CONDENSING UNIT</p> <p>(3) TYPE
P= 14 SEER</p> <p>(4) DESIGN SERIES / VARIATION
M= R-410A</p> <p>(5) COOLING CAPACITY
018= 18,000 BTU/HR
024= 24,000 BTU/HR
030= 30,000 BTU/HR
036= 36,000 BTU/HR
042= 42,000 BTU/HR
048= 48,000 BTU/HR
056= 54,000 BTU/HR
060= 60,000 BTU/HR</p> | <p>(6) ELECTRICAL DESIGNATION
J= 208-230/1/60</p> <p>(7) VARIATIONS
A= FULL FEATURED
E= ELECTRONIC</p> <p>(8) COMPRESSOR
Z= SWEAT W/ SCROLL</p> |
|---|--|

SERIAL NUMBER EXPLANATION

7	9	6	3	M	2	7	0	9	9	9	9	9
(1)				(2)	(3)		(4)		(5)			

- (1) COMPRESSOR IDENTIFICATION NUMBER**
- (2) PRODUCTION LOCATION**
M = Milledgeville, GA
- (3) WEEK OF PRODUCTION**
- (4) YEAR OF PRODUCTION**
- (5) PRODUCTION NUMBER**

No.	Notes	MODEL COOLING CAPACITY	UAPM -018	UAPM -024	UAPM -030	UAPM -036
SHEET METAL PARTS, MISCELLANEOUS (Granite/Steel Gray, On or After Date Code 4811)						
1		Base Pan	AE-58426-82	AE-58426-83	AE-58426-83	AE-58426-83
2		Button Plug	45-22980-07	45-22980-07	45-22980-07	45-22980-07
3		Cabinet	AE-100609-83	AE-100609-88	AE-100609-88	AE-100609-87
4		Top Panel	AE-100618-82	AE-100618-85	AE-100618-85	AE-100618-85
5		Grille	95-100906-02	95-100906-04	95-100906-04	95-100906-04
6		Control Box - All models except JEZ	AE-100633-01	AE-100633-01	AE-100633-01	AE-100633-01
6	1	Control Box - JEZ Models - See Note 1	10-102307-01	10-102307-01	10-102307-01	10-102307-01
6a		Capacitor Adapter Plate (2 in. round capacitor)	AE-54609-01	AE-54609-01	AE-54609-01	AE-54609-01
6a		Capacitor Adapter Plate (2 in. X 1-1/4 in. oval capacitor)	AE-54609-02	AE-54609-02	AE-54609-02	AE-54609-02
6b		Capacitor Strap - Start Capacitor	AE-50892-51	AE-50892-51	AE-50892-51	AE-50892-51
7		Access Panel	AE-100617-83	AE-100617-88	AE-100617-88	AE-100617-87
8		Service Valve - Suction	61-21368-15	61-21368-15	61-21368-15	61-21368-15
9		Service Valve - Liquid	61-101160-13	61-101160-13	61-101160-13	61-101160-13
		Touch-up Paint - Gray (Aerosol)	523009	523009	523009	523009
		Touch-up Paint - Gray (Paint Pens)	523011	523011	523011	523011

No.	Notes	MODEL COOLING CAPACITY	UAPM -042	UAPM -048	UAPM -056	UAPM -060
SHEET METAL PARTS, MISCELLANEOUS (Granite/Steel Gray, On or After Date Code 4811)						
1		Base Pan	AE-58426-83	AE-58426-83	AE-58426-83	AE-58426-83
2		Button Plug	45-22980-07	45-22980-07	45-22980-07	45-22980-07
3		Cabinet	AE-100609-87	AE-100609-87	AE-100609-87	AE-100609-87
4		Top Panel	AE-100618-85	AE-100618-85	AE-100618-85	AE-100618-85
5		Grille	95-100906-04	95-100906-04	95-100906-04	95-100906-04
6		Control Box - All models except JEZ	AE-100633-01	AE-100633-01	AE-100633-01	AE-100633-01
6	1	Control Box - JEZ Models - See Note 1	10-102307-01	10-102307-01	10-102307-01	10-102307-01
6a		Capacitor Adapter Plate (2 in. round capacitor)	AE-54609-01	AE-54609-01	AE-54609-01	AE-54609-01
6a		Capacitor Adapter Plate (2 in. X 1-1/4 in. oval capacitor)	AE-54609-02	AE-54609-02	AE-54609-02	AE-54609-02
6b		Capacitor Strap - Start Capacitor	AE-50892-51	AE-50892-51	AE-50892-51	AE-50892-51
7		Access Panel	AE-100617-87	AE-100617-87	AE-100617-87	AE-100617-87
8		Service Valve - Suction	61-21368-16	61-21368-16	61-21368-16	61-21368-16
9		Service Valve - Liquid	61-101160-13	61-101160-13	61-101160-13	61-101160-13
		Touch-up Paint - Gray (Aerosol)	523009	523009	523009	523009
		Touch-up Paint - Gray (Paint Pens)	523011	523011	523011	523011

No.	Notes	MODEL COOLING CAPACITY	UAPM -018	UAPM -024	UAPM -030	UAPM -036
SHEET METAL PARTS, MISCELLANEOUS (Neutra Green, Before Date Code 4811)						
1		Base Pan	AE-58426-02	AE-58426-03	AE-58426-03	AE-58426-03
2		Button Plug	45-22980-07	45-22980-07	45-22980-07	45-22980-07
3		Cabinet	AE-100609-03	AE-100609-08	AE-100609-08	AE-100609-07
4		Top Panel	AE-100618-02	AE-100618-05	AE-100618-05	AE-100618-05
5		Grille	95-100906-02	95-100906-04	95-100906-04	95-100906-04
6		Control Box - All models except JEZ	AE-100633-01	AE-100633-01	AE-100633-01	AE-100633-01
6	1	Control Box - JEZ Models - See Note 1	10-102307-01	10-102307-01	10-102307-01	10-102307-01
6a		Capacitor Adapter Plate (2 in. round capacitor)	AE-54609-01	AE-54609-01	AE-54609-01	AE-54609-01
6a		Capacitor Adapter Plate (2 in. X 1-1/4 in. oval capacitor)	AE-54609-02	AE-54609-02	AE-54609-02	AE-54609-02
6b		Capacitor Strap - Start Capacitor	AE-50892-51	AE-50892-51	AE-50892-51	AE-50892-51
7		Access Panel	AE-100617-03	AE-100617-08	AE-100617-08	AE-100617-07
8		Service Valve - Suction	61-21368-15	61-21368-15	61-21368-15	61-21368-15
9		Service Valve - Liquid	61-101160-13	61-101160-13	61-101160-13	61-101160-13
		Touch-up Paint (Aerosol)	52-18662-48	52-18662-48	52-18662-48	52-18662-48
		Touch-up Paint (Paint Pens)	523010	523010	523010	523010

No.	Notes	MODEL COOLING CAPACITY	UAPM -042	UAPM -048	UAPM -056	UAPM -060
SHEET METAL PARTS, MISCELLANEOUS (Neutra Green, Before Date Code 4811)						
1		Base Pan	AE-58426-03	AE-58426-03	AE-58426-03	AE-58426-03
2		Button Plug	45-22980-07	45-22980-07	45-22980-07	45-22980-07
3		Cabinet	AE-100609-07	AE-100609-07	AE-100609-07	AE-100609-07
4		Top Panel	AE-100618-05	AE-100618-05	AE-100618-05	AE-100618-05
5		Grille	95-100906-04	95-100906-04	95-100906-04	95-100906-04
6		Control Box - All models except JEZ	AE-100633-01	AE-100633-01	AE-100633-01	AE-100633-01
6	1	Control Box - JEZ Models - See Note 1	10-102307-01	10-102307-01	10-102307-01	10-102307-01
6a		Capacitor Adapter Plate (2 in. round capacitor)	AE-54609-01	AE-54609-01	AE-54609-01	AE-54609-01
6a		Capacitor Adapter Plate (2 in. X 1-1/4 in. oval capacitor)	AE-54609-02	AE-54609-02	AE-54609-02	AE-54609-02
6b		Capacitor Strap - Start Capacitor	AE-50892-51	AE-50892-51	AE-50892-51	AE-50892-51
7		Access Panel	AE-100617-07	AE-100617-07	AE-100617-07	AE-100617-07
8		Service Valve - Suction	61-21368-16	61-21368-16	61-21368-16	61-21368-16
9		Service Valve - Liquid	61-101160-13	61-101160-13	61-101160-13	61-101160-13
		Touch-up Paint (Aerosol)	52-18662-48	52-18662-48	52-18662-48	52-18662-48
		Touch-up Paint (Paint Pens)	523010	523010	523010	523010

No.	Notes	MODEL COOLING CAPACITY ELECTRICAL DESIGNATION	UAPM -018 JAZ	UAPM -024 JAZ	UAPM -030 JAZ	UAPM -036 JAZ
ELECTRICAL GROUP						
CONTROL BOX COMPONENTS:						
10	Stk	Contactator	42-42139-05	42-42139-05	42-42139-05	42-42139-05
11		Capacitor	See Compressor Group			
12		Start Relay	See Compressor Group			
13		Capacitor - Compressor Start	See Compressor Group			
		High/Low Pressure Controls	See Coil Group			

No.	Notes	MODEL COOLING CAPACITY ELECTRICAL DESIGNATION	UAPM -018 JEZ	UAPM -024 JEZ	UAPM -030 JEZ	UAPM -036 JEZ
ELECTRICAL GROUP						
CONTROL BOX COMPONENTS:						
11		Capacitor	See Compressor Group			
12		Start Relay	See Compressor Group			
13		Capacitor - Compressor Start	See Compressor Group			
14	Stk	Control Board	47-102090-01	47-102090-01	47-102090-01	47-102090-01
		High/Low Pressure Controls	See Coil Group			
		Wiring Harness - Fan Motor	See Fan Group			
		Wiring Harnesses	See Note 1			

No.	Notes	MODEL COOLING CAPACITY ELECTRICAL DESIGNATION	UAPM -042 JAZ	UAPM -048 JAZ	UAPM -056 JAZ	UAPM -060 JAZ
ELECTRICAL GROUP						
CONTROL BOX COMPONENTS:						
10	Stk	Contactator	42-42139-05	42-42478-02	42-42478-02	42-42478-02
11		Capacitor - Fan Motor/Compressor	See Compressor Group			
12		Start Relay	See Compressor Group			
13		Capacitor - Compressor Start	See Compressor Group			
		High/Low Pressure Controls	See Coil Group			

No.	Notes	MODEL COOLING CAPACITY ELECTRICAL DESIGNATION	UAPM -042 JEZ	UAPM -048 JEZ	UAPM -056 JEZ	UAPM -060 JEZ
ELECTRICAL GROUP						
CONTROL BOX COMPONENTS:						
11		Capacitor - Fan Motor/Compressor	See Compressor Group			
12		Start Relay	See Compressor Group			
13		Capacitor - Compressor Start	See Compressor Group			
14	Stk	Control Board	47-102090-01	47-102090-01	47-102090-01	47-102090-01
		High/Low Pressure Controls	See Coil Group			
		Wiring Harness - Fan Motor	See Fan Group			
		Wiring Harnesses	See Note 1			

No.	Notes	MODEL COOLING CAPACITY ELECTRICAL DESIGNATION	UAPM -018 J	UAPM -024 J	UAPM -030 J	UAPM -036 J
FAN GROUP						
15	Stk	Fan Motor - Before Date Code 2710	51-102870-03	51-102008-07	51-102870-03	51-102870-03
15	Stk	Fan Motor - On or After Date Code 2710	51-102870-03	51-102008-07	51-102008-08	51-102008-08
16	Stk	Fan Blade	70-102011-06	70-102011-10	70-21858-17	70-21858-17
	Stk,1	Wiring Harness - Units with PSC Fan Motor (6 Pin on Board to single Quick Connect on Board, JEZ Models) - See Note 1	N/A	45-102120-01	45-102120-01	45-102120-01
	Stk,1	Wiring Harness - ECM Fan Motor (6 Pin on Board to three Quick Connects, JEZ Models) - See Note 1	45-102122-02	N/A	45-102122-02	45-102122-02

No.	Notes	MODEL COOLING CAPACITY ELECTRICAL DESIGNATION	UAPM -042 J	UAPM -048 J	UAPM -056 J	
FAN GROUP						
15	Stk	Fan Motor - Before Date Code 1112	51-102728-11	51-102728-13	51-102728-13	
15	Stk	Fan Motor - On or After Date Code 1112	51-102728-11	51-101774-13	51-102728-13	
16	Stk	Fan Blade - Before Date Code 1112	70-104092-01	70-21858-17	70-21858-17	
16	Stk	Fan Blade - On or After Date Code 1112	70-104092-01	70-104092-01	70-21858-17	
	Stk,1	Wiring Harness - Units with PSC Fan Motor (6 Pin on Board to single Quick Connect on Board, JEZ Models) - See Note 1	N/A	45-102120-01	N/A	
	Stk,1	Wiring Harness - ECM Fan Motor (6 Pin on Board to three Quick Connects, JEZ Models) - See Note 1	45-102122-02	45-102122-02	45-102122-02	

No.	Notes	MODEL COOLING CAPACITY ELECTRICAL DESIGNATION				UAPM -060 J
FAN GROUP						
15	Stk	Fan Motor - Before Date Code 1112				51-102728-12
15	Stk	Fan Motor - On or After Date Code 1112				51-102008-09
16	Stk	Fan Blade - Before Date Code 1112				70-21858-17
16	Stk	Fan Blade - On or After Date Code 1112				70-102011-20
	Stk,1	Wiring Harness - Units with PSC Fan Motor (6 Pin on Board to single Quick Connect on Board, JEZ Models) - See Note 1				45-102120-01
	Stk,1	Wiring Harness - ECM Fan Motor (6 Pin on Board to three Quick Connects, JEZ Models) - See Note 1				45-102122-02

Wiring Harness - 6 Pin on Board to single Quick Connect on Board (JEZ Models)

No.	Notes	MODEL COOLING CAPACITY ELECTRICAL DESIGNATION	UAPM -018 JAZ	UAPM -024 JAZ	UAPM -030 JAZ	UAPM -036 JAZ
COIL GROUP						
17	Stk	Condenser Coil	AS-102135-03	AS-102432-03	AS-102432-03	AS-102978-03
	Stk	Filter Drier	83-22755-06	83-22755-05	83-22755-05	83-22755-05
	Stk	High Pressure Control (Straight with 1/4 inch connection) - Before Date Code 0311	47-26184-01	47-26184-01	47-26184-01	47-26184-01
	Stk	High Pressure Control (90 Deg Elbow with 1/4 inch connection) - On or After Date Code 0311	47-103669-01	47-103669-01	47-103669-01	47-103669-01
	Stk	Low Pressure Control (90 Deg Elbow with 5/16 inch connection) - Before Date Code 0311	47-26185-02	47-26185-02	47-26185-02	47-26185-02
	Stk	Low Pressure Control (90 Deg Elbow with 1/4 inch connection) - On or After Date Code 0311	47-103670-01	47-103670-01	47-103670-01	47-103670-01

No.	Notes	MODEL COOLING CAPACITY ELECTRICAL DESIGNATION	UAPM -018 JEZ	UAPM -024 JEZ	UAPM -030 JEZ	UAPM -036 JEZ
COIL GROUP						
17	Stk	Condenser Coil	AS-102135-03	AS-102432-03	AS-102432-03	AS-102978-03
	Stk	Filter Drier	83-22755-06	83-22755-05	83-22755-05	83-22755-05
	Stk	High Pressure Control (Straight with 1/4 inch connection) - Before Date Code 0311	47-26184-01	47-26184-01	47-26184-01	47-26184-01
	Stk	High Pressure Control (90 Deg Elbow with 1/4 inch connection) - On or After Date Code 0311	47-103669-01	47-103669-01	47-103669-01	47-103669-01
	Stk	Low Pressure Control (90 Deg Elbow with 5/16 inch connection) - Before Date Code 0311	47-101529-04	47-101529-04	47-101529-04	47-101529-04
	Stk	Low Pressure Control (90 Deg Elbow with 1/4 inch connection) - On or After Date Code 0311	47-103670-02	47-103670-02	47-103670-02	47-103670-02

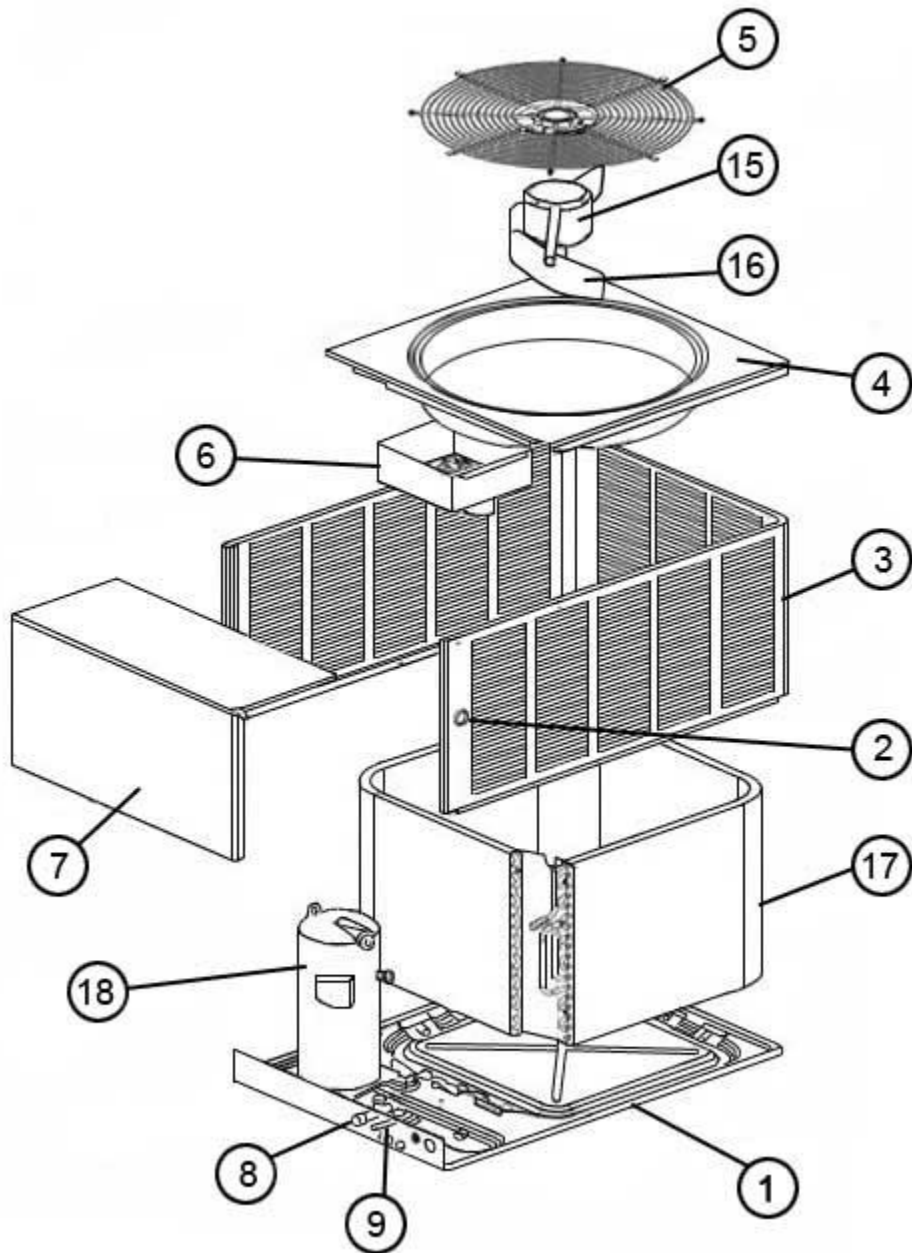
No.	Notes	MODEL COOLING CAPACITY ELECTRICAL DESIGNATION	UAPM -042 JAZ	UAPM -048 JAZ	UAPM -056 JAZ	UAPM -060 JAZ
COIL GROUP						
17	Stk	Condenser Coil - Before Date Code 2611	AS-101959-03	AS-102661-01	AS-102661-01	AS-102661-01
17	Stk	Condenser Coil - On or After Date Code 2611	AS-104062-03	AS-102661-01	AS-102661-01	AS-102661-01
	Stk	Filter Drier	83-22755-05	83-22755-05	83-22755-05	83-22755-05
	Stk	High Pressure Control (Straight with 1/4 inch connection) - Before Date Code 0311	47-26184-01	47-26184-01	47-26184-01	47-26184-01
	Stk	High Pressure Control (90 Deg Elbow with 1/4 inch connection) - On or After Date Code 0311	47-103669-01	47-103669-01	47-103669-01	47-103669-01
	Stk	Low Pressure Control (90 Deg Elbow with 5/16 inch connection) - Before Date Code 0311	47-26185-02	47-26185-02	47-26185-02	47-26185-02
	Stk	Low Pressure Control (90 Deg Elbow with 1/4 inch connection) - On or After Date Code 0311	47-103670-01	47-103670-01	47-103670-01	47-103670-01

No.	Notes	MODEL COOLING CAPACITY ELECTRICAL DESIGNATION	UAPM -042 JEZ	UAPM -048 JEZ	UAPM -056 JEZ	UAPM -060 JEZ
COIL GROUP						
17	Stk	Condenser Coil - Before Date Code 2611	AS-101959-03	AS-102661-01	AS-102661-01	AS-102661-01
17	Stk	Condenser Coil - On or After Date Code 2611	AS-104062-03	AS-102661-01	AS-102661-01	AS-102661-01
	Stk	Filter Drier	83-22755-05	83-22755-05	83-22755-05	83-22755-05
	Stk	High Pressure Control (Straight with 1/4 inch connection) - Before Date Code 0311	47-26184-01	47-26184-01	47-26184-01	47-26184-01
	Stk	High Pressure Control (90 Deg Elbow with 1/4 inch connection) - On or After Date Code 0311	47-103669-01	47-103669-01	47-103669-01	47-103669-01
	Stk	Low Pressure Control (90 Deg Elbow with 5/16 inch connection) - Before Date Code 0311	47-101529-04	47-101529-04	47-101529-04	47-101529-04
	Stk	Low Pressure Control (90 Deg Elbow with 1/4 inch connection) - On or After Date Code 0311	47-103670-02	47-103670-02	47-103670-02	47-103670-02

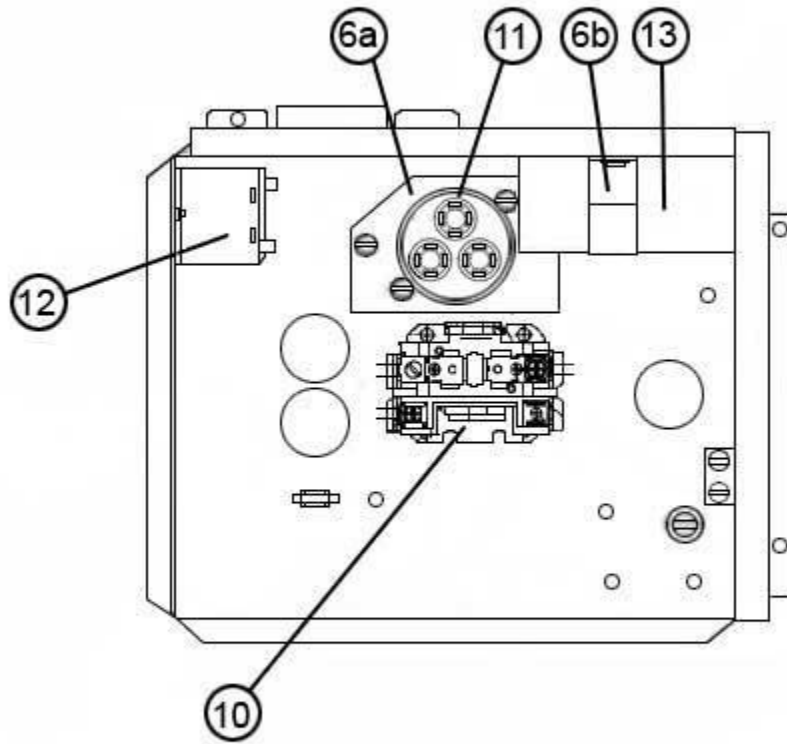
No.	Notes	MODEL COOLING CAPACITY ELECTRICAL DESIGNATION	UAPM -018 J	UAPM -024 J	UAPM -030 J	UAPM -036 J
COMPRESSOR GROUP						
		Compressor ID:	7963	7964	7965	7966
18	Stk	Compressor	55-102045-14S	55-102045-24S	55-102045-31S	55-102045-03S
	Stk	Compressor Wiring Harness (Molded Plug) - All models except JEZ	45-100834-80	45-100834-80	45-100834-80	45-100834-80
	Stk,1	Compressor Wiring Harness (Molded Plug) - JEZ - See Note 1	45-100834-07	45-100834-07	45-100834-07	45-100834-07
11	Stk	Capacitor - Compressor/Fan (Before Date Code 2710)	N/A	43-26271-50	N/A	N/A
11	Stk	Capacitor - Compressor (Before Date Code 2710)	43-100510-36	N/A	43-100510-24	43-100510-37
11	Stk	Capacitor - Compressor/Fan (On or After Date Code 2710)	N/A	43-26271-50	43-101665-09	43-101665-41
11	Stk	Capacitor - Compressor (On or After Date Code 2710)	43-100510-36	N/A	N/A	N/A
12	Stk	Start Relay	42-100491-09	42-100491-09	42-100491-09	42-100491-09
13	Stk	Start Capacitor	43-17075-04	43-17075-04	43-17075-04	43-17075-04

No.	Notes	MODEL COOLING CAPACITY ELECTRICAL DESIGNATION	UAPM -042 J	UAPM -048 J	UAPM -056 J	UAPM -060 J
COMPRESSOR GROUP						
		Compressor ID:	7967	7968	8256	7969
18	Stk	Compressor	55-102045-15S	55-102045-09S	55-102045-58S	55-102045-26S
		Crankcase Heater	N/A	44-101884-01	44-101884-01	44-101884-01
	Stk	Compressor Wiring Harness (Molded Plug) - All models except JEZ	45-100834-80	45-100834-80	45-100834-80	45-100834-80
	Stk,1	Compressor Wiring Harness (Molded Plug) - JEZ - See Note 1	45-100834-07	45-100834-08	45-100834-08	45-100834-08
11	Stk	Capacitor - Compressor (Before Date Code 1112)	43-100510-37	43-100510-29	43-100510-29	43-100510-29
11	Stk	Capacitor - Compressor/Fan (Before Date Code 1112)	N/A	N/A	N/A	N/A
11	Stk	Capacitor - Compressor (On or After Date Code 1112)	43-100510-37	N/A	43-100510-29	N/A
11	Stk	Capacitor - Compressor/Fan (On or After Date Code 1112)	N/A	43-101665-53	N/A	43-101665-53
12	Stk	Start Relay	42-100491-09	42-100491-09	42-100491-09	42-100491-09
13	Stk	Start Capacitor	43-17075-04	43-17075-04	43-17075-04	43-17075-04

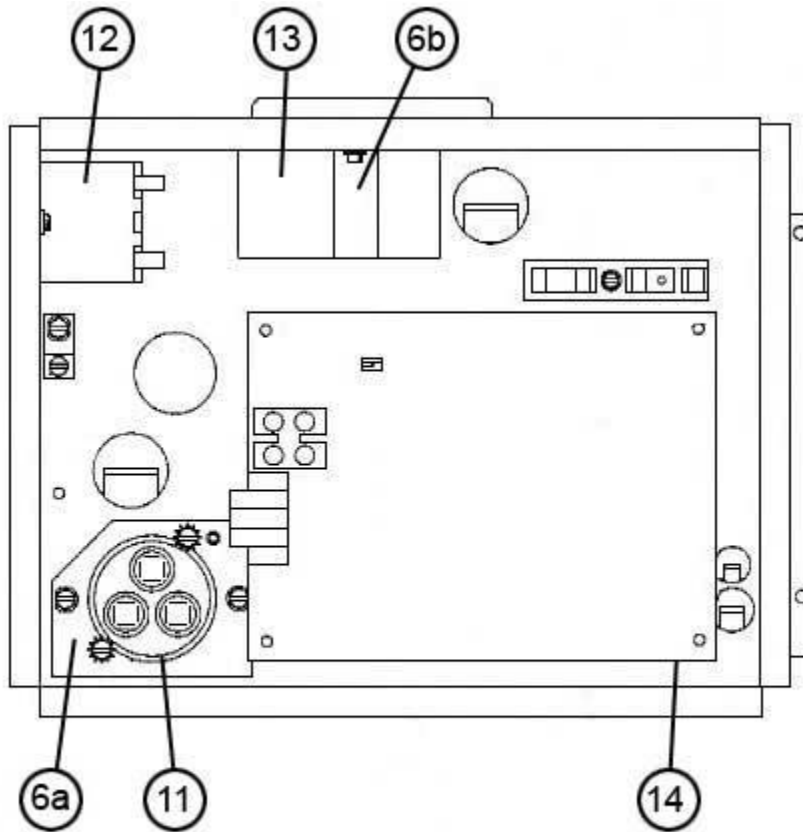
No.	Notes	MODEL VARIATIONS	UAPM ALL
ACCESSORIES			
		Low Ambient Control	RXAD-A08
		Compressor Time Delay	RXMD-B01



Exploded View



Control Box Assembly (JAZ)



Control Box Assembly (JEZ)

NOTES

Stk It is recommended that stock be maintained for this part.

N/A Not Applicable

- 1 Wiring Harnesses not listed individually are included with the JEZ model Control Box (item 6).