



P-T Coupling Co., Inc.
 1414 E. Willow
 Enid,
Phone: 580-237-4060
Website: <http://www.ptcoupling.com>

Item # 2701115, V-Coupler (Dust Cap)

List Price **QUOTE**

PT maintains inventories at its 16 branch warehouse locations.

HBS cam arms are made of 300 series Stainless Steel.

HB cam arms are made of Brass.

All Stainless Steel castings are 316 and all components are 300 series Stainless Steel.

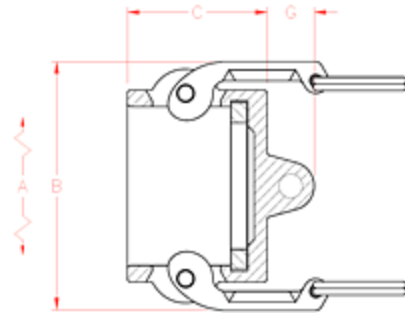
Please call for special quote on complete cam arm assembly and components in 316 Stainless Steel.

8, 10 and 12 inch couplers are 4-cam designs with the STA-LOK® positive locking feature.

Couplings not interchangeable in the industry are sizes 8" through 12".

Made in the U.S.A.

Note: Prices subject to change without notice.



Specifications

Part Name	15V
Type	Dust Cap
Material	Polypropylene
Size	1-1/2 in.
Coupler Size	1-1/2 in.
O. D. with Cam Arms Extended (A)	7.16 in. 182 mm
Outside Diameter (B)	3.56 in. 90 mm
Overall Length (C)	1.96 in. 50 mm
Chain Lug Extension (G)	0.86 in. 22 mm

Engagement Length	1.48 in.
-------------------	----------