

SPECIFICATIONS

FIGURE 7010Z HANGER



ADJUSTABLE SWIVEL RING HANGER

FEATURES

- Finish: Plated
- Color: Zinc
- UL approved – Sizes 1/2" – 8"
- FM approved – Sizes 3/4" – 8"
- Hanger body: Pre-galvanized carbon steel ASTM A653



PRODUCT SPECIFICATIONS

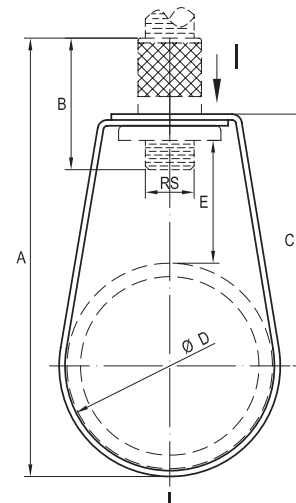
Standards

- Design: MSS SP-58, Type 10
- Federal specification: WW-H-171, Type 10
- NFPA 13



ACCESSORIES

FNW701XRNC	3/8" REPLACEMENT RIVET NUT
FNW701XRND	1/2" REPLACEMENT RIVET NUT
FNW701XRNE	5/8" REPLACEMENT RIVET NUT



Note: A - Rod size (hanger rod not included), B - Center of pipe to top of knurled hanger rod nut, C - Rod take out (center of pipe to bottom of hanger rod)
D - Top of pipe to bottom of hanger rod nut

REFERENCE CHART

Item #	Pipe Size		RS (rod size)	A		B		C		ØD		E		Bandwidth x Thickness		Design Load		Weight	
	in.	mm		in.	mm	in.	mm	in.	mm	in.	mm	in.	mm	in.	mm	lbs	N	lbs	g
FNW7010Z0050	1/2	DN15	3/8-16 UNC	2.76	70	0.98	25	1.65	42	.866 – .906	22-23	1.02	26	0.63x.047	16.0x1.20	300	1334	0.05	24
FNW7010Z0075	3/4	DN20	3/8-16 UNC	3.07	78	0.98	25	1.85	47	1.102 – 1.142	28-29	1.10	28	0.63x.047	16.0x1.20	300	1334	0.06	27
FNW7010Z0100	1	DN25	3/8-16 UNC	3.31	84	0.98	25	1.97	50	1.339 – 1.378	34-35	1.10	28	0.63x.047	16.0x1.20	300	1334	0.07	30
FNW7010Z0125	1-1/4	DN32	3/8-16 UNC	3.54	90	0.98	25	2.01	51	1.693 – 1.732	43-44	0.98	25	0.63x.047	16.0x1.20	300	1334	0.07	32
FNW7010Z0150	1-1/2	DN40	3/8-16 UNC	3.82	97	0.98	25	2.17	55	1.929 – 2.008	49-51	1.02	26	0.63x.047	16.0x1.20	300	1334	0.08	35
FNW7010Z0200	2	DN50	3/8-16 UNC	4.25	108	0.98	25	2.40	61	2.402 – 2.480	61-63	1.02	26	0.63x.047	16.0x1.20	300	1334	0.09	40
FNW7010Z0250	2-1/2	DN65	3/8-16 UNC	4.88	124	1.06	27	2.76	70	3.031 – 3.071	77-78	0.98	25	0.79x.079	20.0x2.00	525	2334	0.22	100
FNW7010Z0300	3	DN80	3/8-16 UNC	5.67	144	1.06	27	3.27	83	3.543 – 3.622	90-92	1.26	32	0.79x.079	20.0x2.00	525	2334	0.26	116
FNW7010Z0350	3-1/2	DN90	3/8-16 UNC	6.10	155	1.06	27	3.62	92	4.016 – 4.134	102-105	1.34	34	0.79x.079	20.0x2.00	585	2600	0.28	129
FNW7010Z0400	4	DN100	3/8-16 UNC	6.85	174	1.06	27	3.94	100	4.567 – 4.685	116-119	1.42	36	0.79x.079	20.0x2.00	650	2890	0.31	142
FNW7010Z0500	5	DN125	1/2-13 UNC	8.19	208	1.30	33	4.57	116	5.630 – 5.748	143-146	1.46	37	0.79x.098	20.0x2.50	1000	4445	0.47	213
FNW7010Z0600	6	DN150	1/2-13 UNC	9.65	245	1.30	33	5.51	140	6.693 – 6.811	170-173	1.85	47	0.79x.098	20.0x2.50	1000	4445	0.55	251
FNW7010Z0800	8	DN200	1/2-13 UNC	12.32	313	1.30	33	7.19	182.5	8.701 – 8.819	221-224	2.52	64	0.79x.098	20.0x2.50	1000	4445	0.71	322