

PFLT2522D



Single Basin Laundry Sink

Product Features

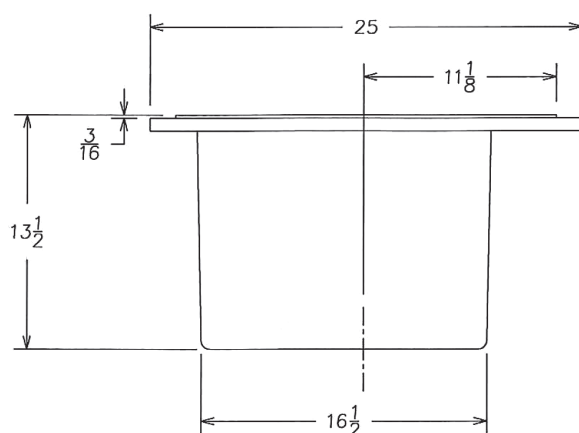
- Made from a Sheet Molding Compound (SMC), a plastic composite made up of filler, fire retardant, thickener, and internal mold release that have been mixed with liquid resin and a catalyst, and molded under extreme heat and pressure to create a laundry tub with unparalleled strength.
- Available in white only
- Drain size: 1-1/2"
- Inside dimensions: 22-1/8" x 17" x 12-3/4"
- Self-rimming design
- Internal basin depth: 13"
- Replacement drain: PFLTDRAIN

Model Numbers

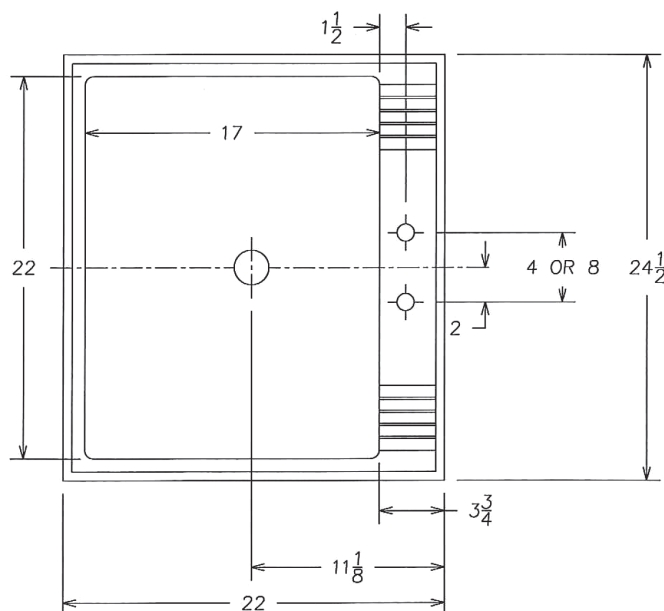
PFLT2522D 24-1/2" x 22" Drop-in Laundry Sink



PFLT2522D



Product Features



Warranty and Codes

These products come complete with installation, operating, care and maintenance instructions. All PROFLO laundry sinks carry a 1-year limited warranty. In an effort to continually improve our products, we will make design changes from time to time. We reserve the right to ship newly designed product to fill any order unless we agree in writing to do otherwise.



Distributed Exclusively by Ferguson and Wolseley Canada