



Noble Pro LED Line Voltage Task Lighting NLLP Series

Features

The NLLP Series is ideal for undercabinet lighting in kitchens, study area and displays with its low profile design. The housing is available in 5 different lengths, ranging from 9" to 40" to handle most application requirements. Color options include white, oil-rubbed bronze and a brushed aluminum finish to accommodate most decors. The NLLP Series includes an array of LEDs, and is linkable up to 200 watts. In addition the units can be direct wired, and attached to the cabinet with 2 captive mounting screws, which provide for a smoother installation. Multiple knockouts on the top and the back which offers maximum wiring flexibility.

The following accessories are included with each fixture:

- 5' cord and plug • 12" connecting cable • BX/NM cable connector • direct connector

Hardwire Box (ordered separately) recommended for use (when direct wiring the 9" units)

Construction

Fixture housing is made from extruded aluminum.

Finish

All exposed metal parts are post painted and available in the following finishes:

- White Gloss Enamel (WH) • Brushed Aluminum (BA)
- Oil-Rubbed Bronze (RB)

Diffuser

White polycarbonate

Electrical

This unit is wired for 120 Volt operation. This product also provides a user selectable switch which will allow you to select 1 of 3 color levels which are 2700K, 3000K & 4000K CCT respectively. The fixture features a Triac dimmable driver and is dimmable with most standard 2 wire (Triac) wall dimmers or an electronic low voltage dimmer switch (sold separately). High/ low switch included.

Lamping

LED Lamping, type SMT array, 2 (Non replaceable arrays are used to create 2700K, 3000K or 4000K color temps), Rated to 50,000 hrs. 90 CRI.

Certification

Fixtures are cULus listed for damp locations and carry a UL rating for undercabinet/convertible/linkable mounting. ENERGY STAR® qualified. Meets Title 24 requirements.

Warranty

Limited warranty. This fixture guaranteed to be free from defects in materials and workmanship for a period of 5 years from date of purchase.

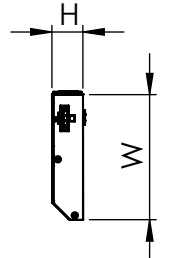
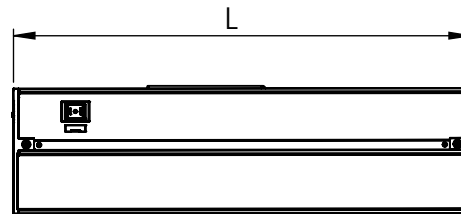
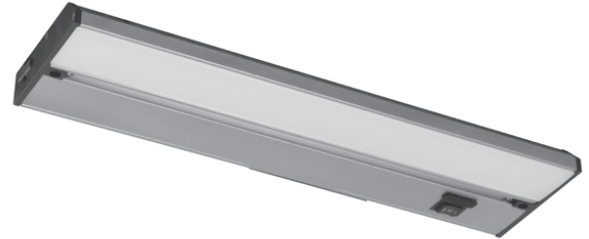
Specifications and dimensions subject to change without notice.

Ordering Information:

White	Oil-Rubbed Bronze	Brushed Aluminum	Type	*Watt	Lumens (2.7K/3.0K/4.0K)	*LPW	L	W	H
NLLP9WH	NLLP9RB	NLLP9BA	SMT-Array	4.6W	259/290/384	63	9"	3-3/4"	1"
NLLP14WH	NLLP14RB	NLLP14BA	SMT-Array	6.7W	384/437/442	65	14"	3-3/4"	1"
NLLP22WH	NLLP22RB	NLLP22BA	SMT-Array	10.7W	656/746/755	69	22"	3-3/4"	1"
NLLP32WH	NLLP32RB	NLLP32BA	SMT-Array	14.4W	927/1022/1023	70	32"	3-3/4"	1"
NLLP40WH	NLLP40RB	NLLP40BA	SMT-Array	18W	1170/1302/1310	72	40"	3-3/4"	1"

*Watt & LPW based on 3000K

LOCATION		DATE
PREPARED BY		QUANTITY
COMMENTS		FIXTURE TYPE
CATALOG NUMBER		



Compatible Wall Dimmers

Brand	Model #
Cooper	6013W
Leviton®	6633, 6681, 6621-WWP, 6631-WWP, DSE06-10Z
Lutron®	TG-600P, TG-603P, AY600P, MACL153MH, SELV-300P
Legrand®	T600WW, WS700TCCVG
Pass & Seymour	

Accessories (Ordered Separately)

White

XLCC24WH	24" interconnect cord
XLCC36WH	36" interconnect cord
XLCC48WH	48" interconnect cord
XLCC72WH	72" interconnect cord
XLP60WH	60" Cord & Plug
XLHBWH	Hardwire Box

Black

XLCC24BL	24" interconnect cord
XLCC36BL	36" interconnect cord
XLCC48BL	48" interconnect cord
XLCC72BL	72" interconnect cord
XLCP60BL	60" Cord & Plug
XLHBBL	Hardwire Box