

# Lock-Temp® Round Jacketed Storage Tanks

## Standard Features

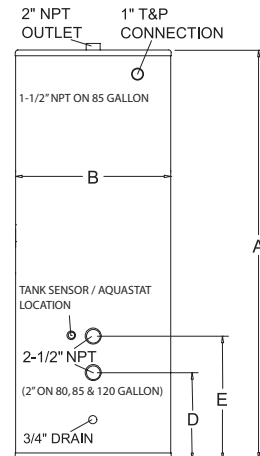
- **Energy Saving Performance** - meet the requirements of the latest ASHRAE Energy Efficiency Standards.
- **Five-Year Limited Warranty** - against tank failure resulting from defects in materials or workmanship.
- **Lock-Temp Baffle** - creates nearly perfect stratification.
- **Magnesium Anode** - provide additional protection against corrosion.
- **ASME Construction** - in accordance with ASME standards and labeled for 125 psi working pressure (standard) or 150 psi working pressure (optional). (RJS080 & RJS120 are non-ASME construction)
- **Galvanized Jacket** - Heavy gauge jacket is and finished in durable acrylic enamel combining attractive appearance with maximum protection.

## Vertical Round Jacketed Glass Lined Tanks

Model Number	Gal. Cap.	A	B	D	E	Ship. Wt.	
						125 psi	150 psi
RJS080M	80	63"	25-1/4"	9-1/4"	14-1/4"	-	240
RJS085M	85	49-1/2"	28"	9-1/2"	14-1/2"	-	255
RJS120M	119	62"	29-1/2"	9-1/2"	14-1/2"	-	352
RJA120*	119	62-1/2"	28"	9-1/2"	14-1/2"	-	365
RJA175*	175	66-1/4"	32"	11-1/4"	17-1/4"	-	578
RJA200*	200	77-1/4"	32"	11-1/4"	17-1/4"	-	634

Glass Lined only

\*A = ASME Construction / S = Standard Construction



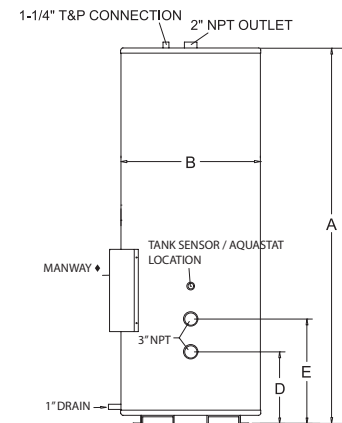
500 Gallon Jacketed Tank.

## Vertical Round Jacketed ASME Tanks

Model Number	Gal. Cap.	A	B	D	E	Ship. Wt.	
						125 psi	150 psi
R*A0257	257	91"	34"	18"	26"	904	904
R*A0318	318	80"	40"	19-1/2"	27-1/2"	987	987
R*A0432	432	80"	46"	21"	29"	1,188	1,188
R*A0504	504	92"	46"	21"	29"	1,329	1,329
R*A0650	650	92"	52"	23-1/2"	31-1/2"	1,817	1,817
R*A0752	752	104"	52"	23-1/2"	31-1/2"	2,030	2,030
R*A0940	940	128"	52"	23-1/2"	31-1/2"	2,710	2,710

\* Indicates tank lining. G=Glass Lined C=Cement lined

◆ The manway is optional on 257 and 318 gallon glass-lined tanks. The manway is standard on 432 gallon glass lined tanks and larger. The manway is standard on all cement lined tanks.



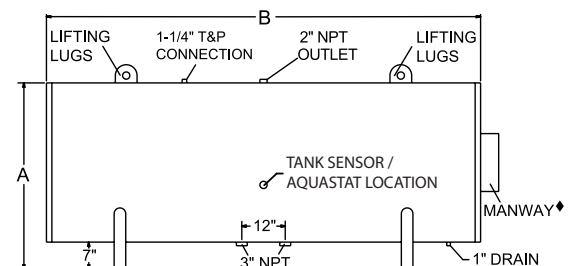
MANWAY IS STANDARD ON CEMENT TANKS.

## Horizontal Round Jacketed ASME Tanks

Model Number	Gal. Cap.	A	B	Diameter	Ship. Wt.	
					125 psi	150 psi
R*A0250H	250	41"	87"	34"	1,157	1,157
R*A0300H	300	47"	76"	40"	1,355	1,355
R*A0400H	400	53"	76"	46"	1,587	1,701
R*A0500H	500	53"	88"	46"	1,711	1,853
R*A0600H	600	59"	88"	52"	2,053	2,053
R*A0700H	700	59"	100"	52"	2,399	2,399
R*A1000H	1,000	59"	124"	52"	3,114	3,114

\*Indicates Tank Linings G=Glass lined C=Cement lined

◆ The manway is optional on 250 and 300 gallon glass-lined tanks. The manway is standard on 432 gallon glass lined tanks and larger. The manway is standard on all cement lined tanks.



MANWAY IS STANDARD ON CEMENT TANKS.