



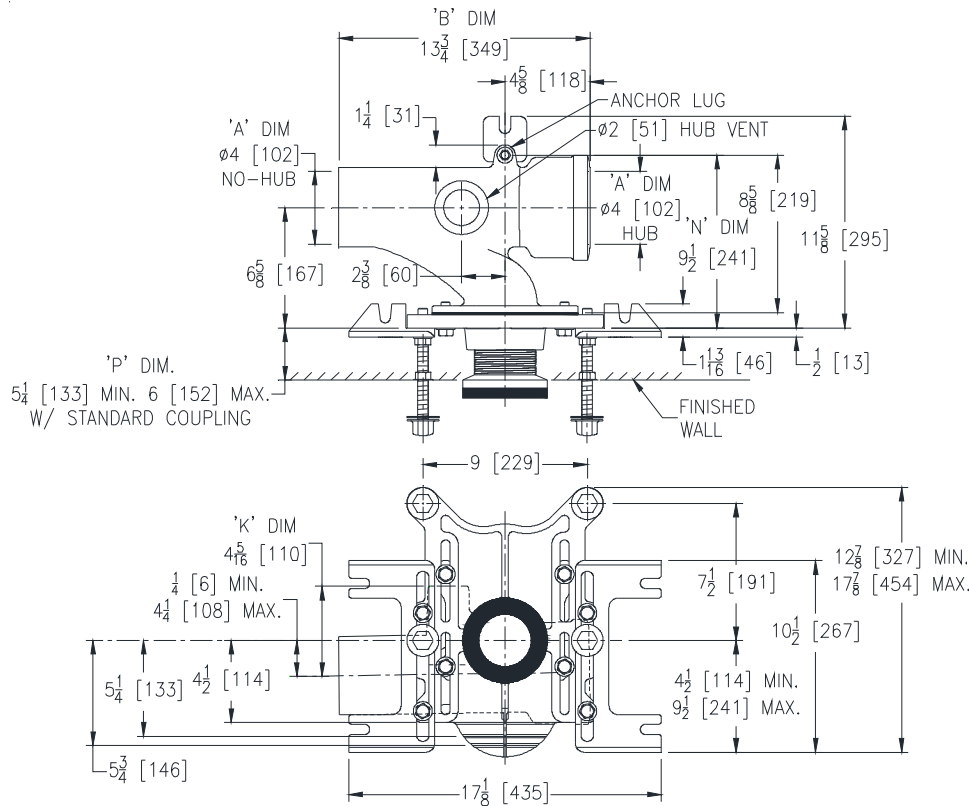
# Z1201-H\_4

## EZCARRY® ADJUSTABLE HORIZONTAL HIGH PERFORMANCE SIPHON JET HUB AND SPIGOT WATER CLOSET CARRIER SYSTEM

### SPECIFICATION SHEET

TAG \_\_\_\_\_

Dimensional Data (inches and [mm]) are Subject to Manufacturing Tolerances and Change Without Notice



Product Number	Approx. Wt. lbs [kg]
Z1201-HL4	55 [25]
Z1201-HR4	

#### Note:

1. Z coupling, Min. 'P' Dim. Obtainable=2 [51]. EZ-Set™ Coupling, Min. 'P' Dim. Obtainable=4-1/4 [108] or 2-1/16 [52] for 12 [305] NPT.
2. Feet bolted to floor using min. 1/2 [13] dia. anchors.
3. Rear anchor foot required for secure installation.

Z1201-HR4 Illustrated

#### ENGINEERING SPECIFICATION: ZURN Z1201-H\_4

EZCarry® horizontal siphon jet water closet carrier system with high performance waterway and 4" [102mm] hub and spigot connections. System includes Dura-Coated cast iron main fitting with hydro-mechanically optimized sweep and extended 2" [51mm] vent, adjustable gasketed faceplate, universal floor mounted pre-fab slotted foot supports, heavy-duty 1/2" [13mm] rear anchor tie down, fixture bolts, trim, stud protectors, bonded "Neo-Seal" gasket, and corrosion resistant, adjustable 3" [76mm] dia. X 6" [152mm] coupling with integral test cap designed to increase flow velocity and line carry. EZCarry® system complies with the requirements of ASME A112.6.1M up to a 500 lbs [227 kg] static load rating.

#### OPTIONS (Check/specify appropriate options)

\_\_\_\_ Z1201-HL4 4 [102] Hub & Spigot, Left Hand Inlet with Flow to Right  
\_\_\_\_ Z1201-HR4 4 [102] Hub & Spigot, Right Hand Inlet with Flow to Left

#### PREFIXES

\_\_\_\_ Z D.C.C.I. System with Zurn ZZ Adjustable Coupling\*  
\_\_\_\_ ZQ D.C.C.I. System with NPT Faceplate, Non-Adjustable Coupling

#### SUFFIXES

____ -A	Auxiliary Support Assembly (For 'P' Dim. Greater than 18 [457])	____ -F	Floor Mounted, Back Outlet Fixture Support
____ -CC	Corrosion Resistant Cast Iron Coupling (2-1/4 [57] to 12 [305])	____ -G	Galvanized Cast Iron
____ -CE	EZ-Set™ Coupling (NPSM 6 [152], 12 [305] or custom) (NPT 12 [305] or custom)	____ -M	Auxiliary Foot Support (for 'P' Dim. 10 thru 18 [254 thru 457])
____ -CL	Custom Length Standard Coupling with Integral Test Cap (Specify Length 4, 8, 10, 12 [102, 203, 254, 305])	____ -RYK	Unistrut Pre-Fab Foot Support
____ -CS	2-1/4 [57] Polymer Coupling with Integral Test Cap	____ -RYK17	One Piece Unistrut Pre-Fab Foot
		____ -VP	Vandal-Proof Trim
		____ -45	Finishing Frame for Siphon Jet System
		____ -50	Flush Valve Supply Support for Water Closets

\* Regularly furnished unless otherwise specified.