

ASSEMBLY & INSTALLATION INSTRUCTIONS

TOWEL SHELF WITH 2 BARS

PART I Assembly of Towel Shelf with 2 bars

1. Assemble towel shelf **(C)** by inserting 1-1/2" machine screws through lock washers, and support plates **(A)** into holes in back of wall flanges **(B)** and fasten into threaded ends of shelf. *(see figure 1)*
2. Assemble medium size towel bar **(D)** below shelf in the same way as in step number 1. *(see figure 1)*
Then assemble shorter size towel bar **(E)** below medium size towel bar **(D)** in the same way as in step number 1. *(see figure 1)*
3. After completing steps 1 & 2 make sure that the wall flanges, towel shelf and bars are perpendicular to one another at 90 degrees. Then securely tighten both towel shelf and towel bars to the wall flanges. *(see figure 2)*

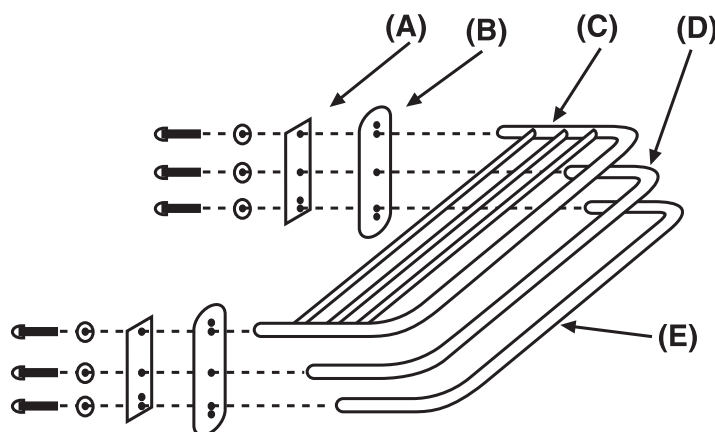


Figure 1

PART II Installation

1. Installation of towel shelf with 2 bars on Walls with Wood Studs or Backing.

- (a) Position assembled towel shelf unit on wall and mark hole locations through countersunk holes in wall flanges with nail or punch.
- (b) Drill 5/32" holes into studs or backing.
- (c) Mount with #10 x 2" matching screws provided.

2. Installation on Drywall.

- (a) Same as #1 (a).
- (b) Drill 1/2" holes.
- (c) Mount with 10/24 x 3" toggle bolts provided.

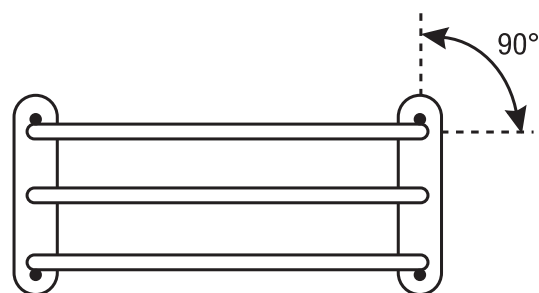


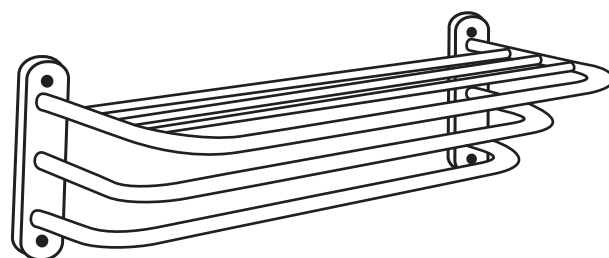
Figure 2

IMPORTANT:

To prolong the life of the product, clean regularly with a soft damp cloth. **Do Not Use** detergents or cleansers as they may be harmful to finish.

REQUIRED TOOLS:

Medium size phillips head screwdriver.
Medium size slotted screwdriver for installation of toggle bolts in drywall.



Assembled Towel Shelf with 2 Bars

Liberty Hardware Manufacturing Corporation
140 Business Park Drive Winston-Salem, NC 27107
www.libertyhardware.com
©2011 LHMC, A Masco Company

Made in - Fabriqué en - Hecho en China

CP2384-XXX