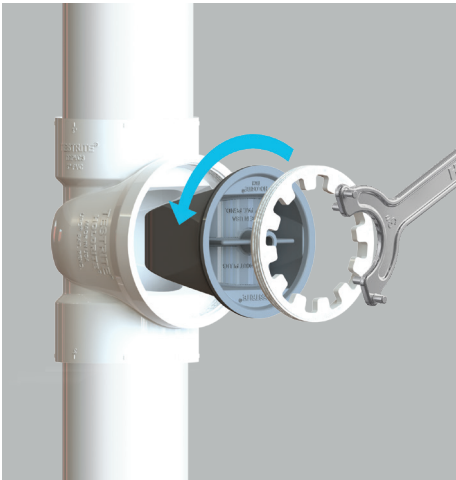


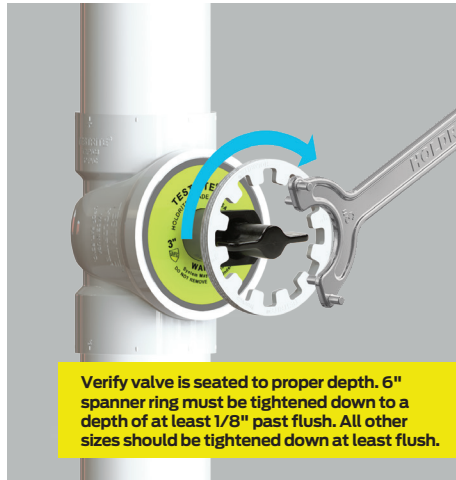
System installation

Base model without 3/4" threads or valve

1 Remove the Cleanout Plug.



2 Insert Test Wedge and reinstall Spanner Ring with the pressure arrow pointing up.



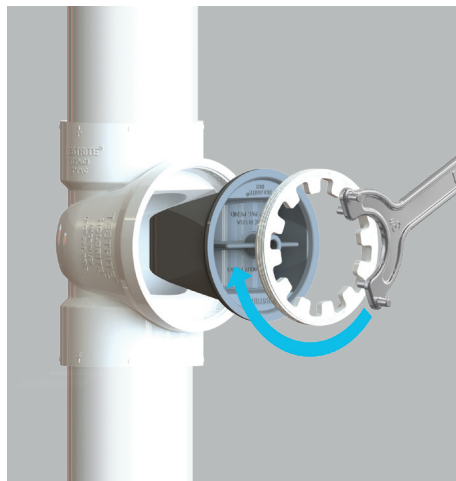
3 Turn the stem to the closed position, turning clockwise until tight. Perform test.***



4 Open stem by turning counter-clockwise. Drain system completely. Remove Test Wedge.***



5 Reinstall Cleanout Plug.



6 Test complete!

