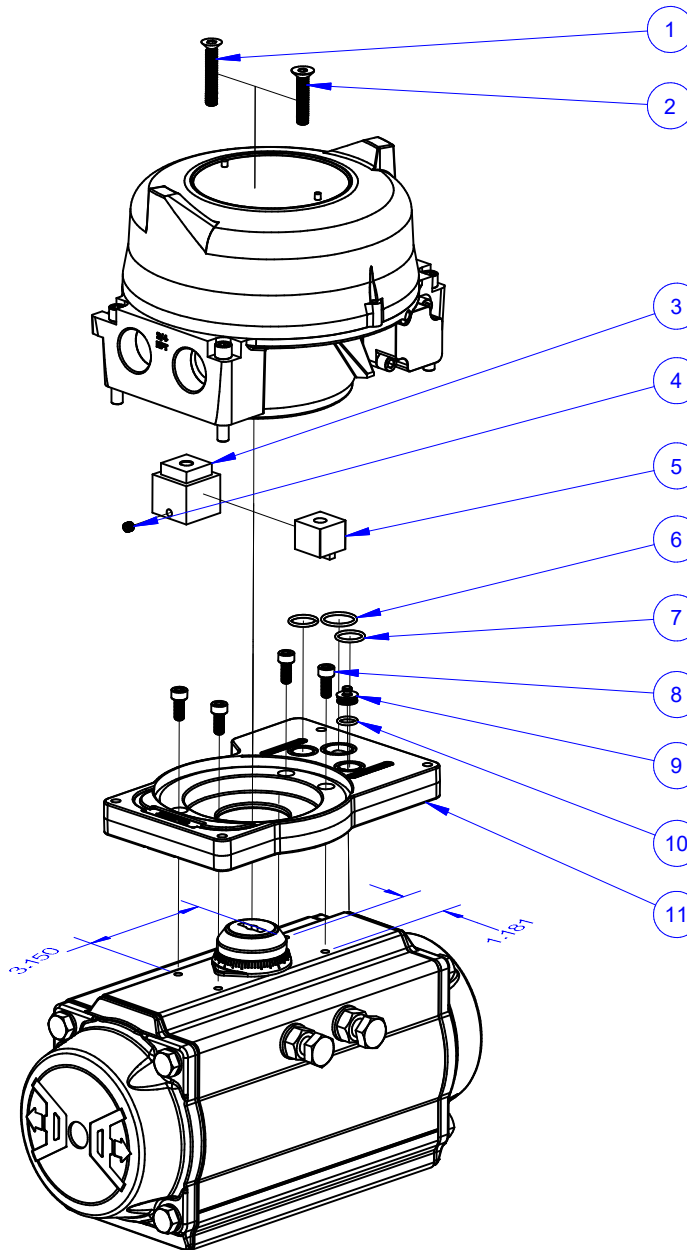


BOM			
ITEM	PART NUMBER	DESCRIPTION	QTY
1	408326	FLAT HEAD SCREW M6 X 35MM SOCKET THREAD LOCK 316 SS	1
2	408314	FLAT HEAD SCREW M6 X 30MM SOCKET THREAD LOCK 316 SS	1
3	423642	COUPLING DRIVE	1
4	408064	CUP POINT SET SCREW 10-32 X 3/16IN 316 SS	1
5	423781	COUPLING DRIVE	1
6	407036	O-RING .625 ID X .062 CS	1
7	407013	O-RING, 1/2 ID X .062 VITON	2
8	408321	SOCKET HEAD SCREW M5 X 12MM 316 SS	4
9	409148	PLUG, SR/DR, AX HOUSING PLATE	1
10	407126	O-RING 8MM ID X 11MM OD X 1.5MM CS	1
11	411237	PLATE AX BASE SILVER Ø 1.531 W/GASKET	1



NOTE:

- SEE BOM FOR PART # AND DESCRIPTION
- ASSEMBLE ITEMS 6, 7 AND 11 PRIOR TO PACKAGING KIT
- ASSEMBLE ITEMS 3 AND 4 PRIOR TO PACKAGING KIT
- ASSEMBLE ITEMS 9, 10 AND INSTALL INTO SR PORT.
- REMOVE ACTUATOR INDICATOR TO MOUNT AXIOM UNIT
- ITEMS 1 (M6 X 35MM), 3 AND 4 USED IN MODEL C APPLICATIONS
- ITEMS 2 (M6 X 20MM) AND 5 USED IN MODEL D APPLICATIONS

REVISIONS	G	14188	06/08/2018	MB	<div>CONFIDENTIAL</div> <div>THIS DRAWING AND ALL INFORMATION CONTAINED HEREIN IS THE PROPERTY OF AND IS SUBJECT TO CHANGE BY STONEL. DRAWING IS NOT TO BE REPRODUCED OR REVEALED TO ANY OTHER PARTY UNLESS AUTHORIZED BY STONEL.</div> <div><div>Stonel[®]</div><div>METSO AUTOMATION, FERGUS FALLS, MN U.S.A.</div></div>			
	F	13955	03/21/18	BK				
	E	11467	01/22/2016	MB				
	REVISION	ECO	DATE	BY				
TOLERANCES (UNLESS OTHERWISE SPECIFIED):				DR. MB	TITLE JAMESBURY VPVL 200 - 300 ACTUATORS			
X.XXX ± .005 ANGLES ± 0° 30'				CHK. BL				
X.XX ± .010 FINISH f 125 RMS				APPD. RK				
X/X ± .015					SCALE 1:4	SHEET 1 OF 1	DRAWING NO. 795402	REV. G