



Lead-Free Garden Valves Series 925LF - 975LF



Arrowhead Brass 925LF and 975LF series Lead-Free Garden Valves are made of heavy-duty Lead-Free brass and feature a one-piece O-ring bonnet stem design for maintenance-free, easy operation with years of service. Arrowhead Brass Garden Valves are available in the 925LF bent nose model or 975LF inverted nose model, and both utilize a unique nested thread design with 1/2 inch and 3/4 inch Female Iron Pipe threaded inlet connections. The 925LF and 975LF series are certified to NSF/ANSI 372 Lead-Free by IAPMO.



Models

925LF

Bent Nose, 1/2" and 3/4" Nested Female Iron Pipe Thread Inlet

975LF

Inverted Nose, 1/2" and 3/4" Nested Female Iron Pipe Thread Inlet

Prevent unwanted water use with Loose Key Models: 301LKLF / 302LKLF



Features and Specifications

- Heavy duty lead-free brass construction. NSF/ANSI 372 certified Lead-Free by IAPMO.
- Inlet connections: Nested 1/2 inch and 3/4 inch female iron pipe threads.
- Utilizes Arrowhead's exclusive no-leak one-piece bonnet with EPDM O-ring seal.
- Maximum pressure: 125 PSI. Max temperature: 140° F
- Flow rate: 9-10 GPM at 50 PSI.
- 3-year limited warranty.
- Arrowhead Brass 925LF and 975 series are also available with tamper-proof loose-key lock-shield (# 925LKLF / 975LKLF).



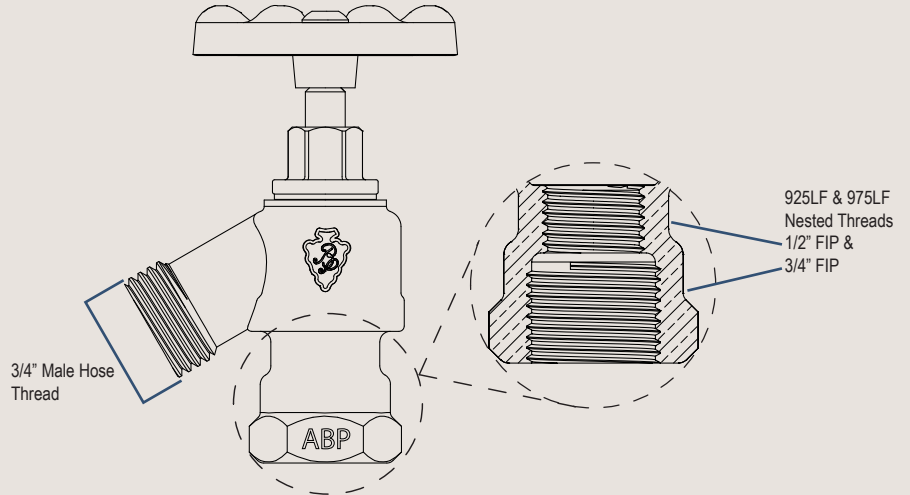


Lead-Free Garden Valves Series 925LF - 975LF

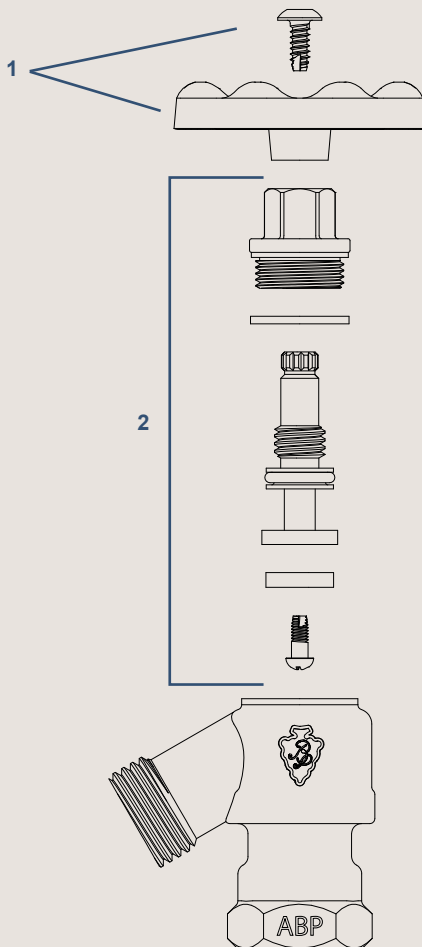
Materials & Dimensions

Component	Material
Valve Body	Lead-Free Brass*
Stem	Lead-Free Brass*
Bonnet	Lead-Free Brass*
O-ring	EPDM
Seat Washer	SBR
Seat Screw	Stainless Steel
Bonnet Washer	Nylon
Handle	Aluminum
Handle Screw	Stainless Steel

* Lead Free is defined as less than 0.25% lead content, certified by IAPMO to NSF/ANSI 372



Part Kits



ID	Part #	Description
1	PK1290	Replacement Green Oval Handle & Stainless Steel Self-Tapping Screw
2	PK1140	Replacement O-ring Style Stem Assembly for 925LF & 975LF series Garden Valves
Additional Parts (not shown)		
	PK1360	Replacement Fine-Thread Vacuum Breaker (Brass Finish)
	58ABP	Add-On Hose Vacuum Breaker with Set Screw