



QUICKDRAIN USA™



SHOWERLINE drain



MORE THAN A **LINEAR DRAIN**. THE **SOLUTION** FOR SHOWERS & WET AREAS.

FUNCTION

Patented Sure Flow System™

The ShowerLine Sure Flow System Guarantee means no water is left behind.

FLEXIBILITY

On-Site Adjustability

QuickDrain USA has created a system which adapts to job site conditions. Can be used with any topical sheet or liquid waterproofing, poured-on-site pans or QuickDrain PET rigid foam pans.

Vertical-to-Vertical Surface Coverage

Our trough extensions and covers ensure a perfect install each and every time, vertical-to-vertical surface. Both are trimmed at the job site after drain body installation

Our unique stackable spacers allow you to easily adjust the height of the drain cover post installation to be flush with the floor

Clamping collar used for topical sheet and liquid waterproofing

Our fully-sloped linear drain bodies allow for 100% water and debris evacuation

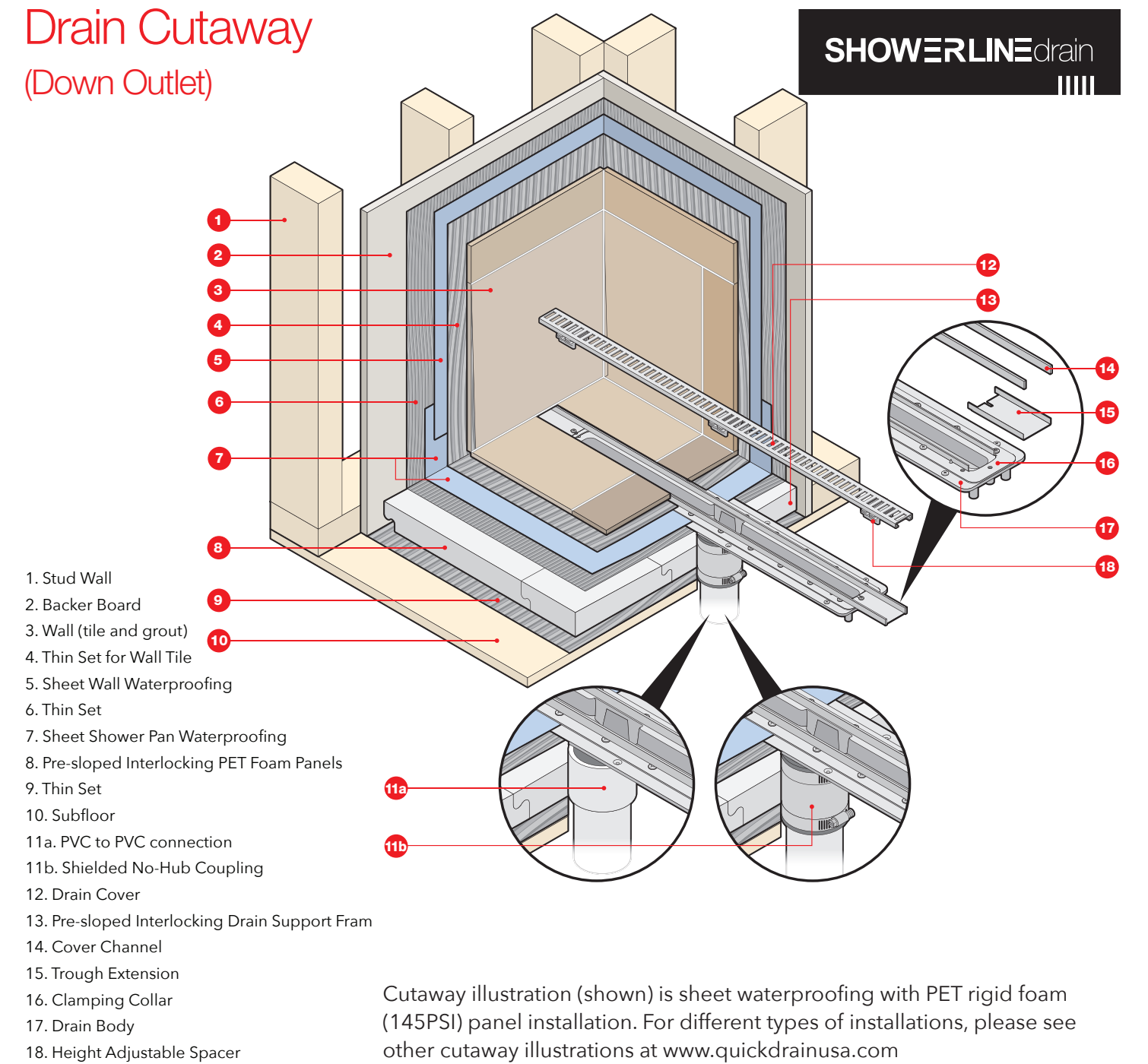
Drain At Entry



Drain At Back Wall



Drain Cutaway (Down Outlet)



Drain Assembly Kit - Down Outlet

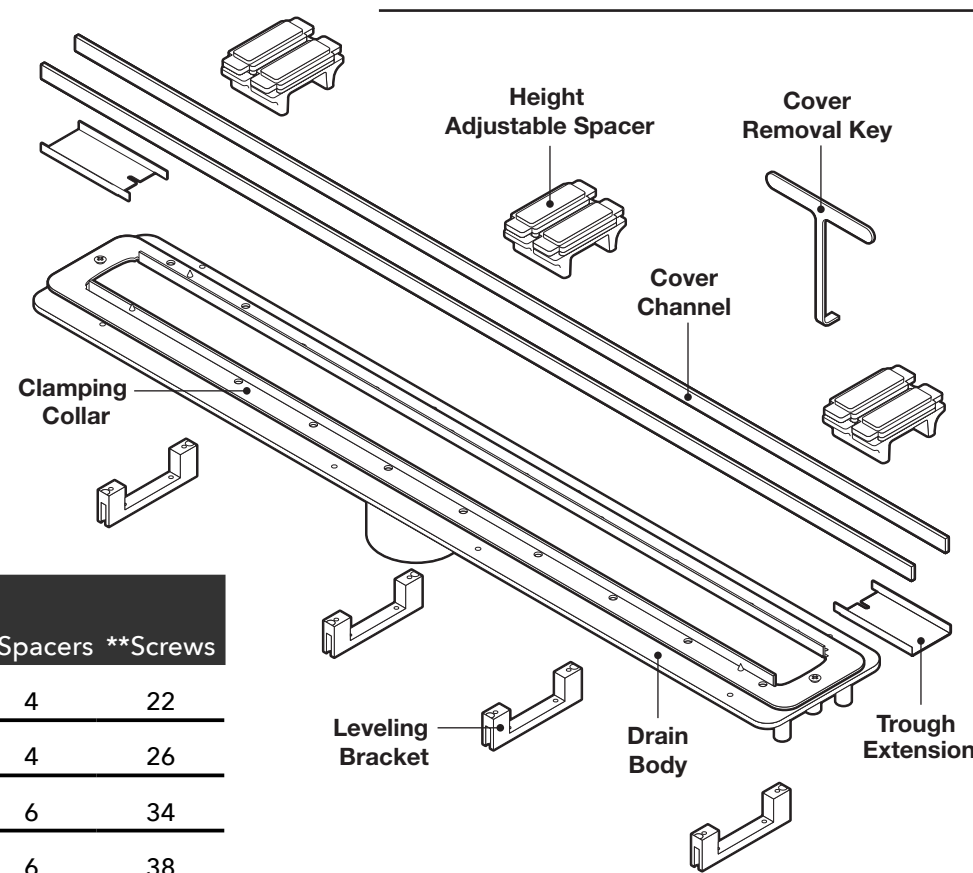
Features:

- Most important special feature is the internally-sloped trough. This feature is a key to no stagnant water sitting in the trough any time and eliminates hard water buildup
- Length adjustability of drain body with use of trough extensions (4" for each side, 8" total) to accommodate drain sizes from 24" - 72"
- Height adjustability of drain cover with use of spacers for different thicknesses of finish material from 3/8" to 3/4"
- Use with any kind of waterproofing: topical sheet waterproofing (QTS, Kerdi™, Noble TS™), topical liquid waterproofing (AquaDefense™, RedGard™, Hydro Ban™, Ardex 8+9™), hot mop, lead pan, PVC vinyl liner, rubber liner, Chloraloy™, copper pan and fiberglass
- Drain capacity for 2" outlet is 12 GPM in a shower pan with curb and 5 GPM in a shower pan without a curb at the entry. For 1.5" outlet it's 9 GPM and 3.5 GPM. (the actual volume is limited by the plumbing lines and P-trap)

Drain Assembly Includes:

- PVC Parts:
 - Drain body (1)
 - Height Adjustable Spacers*
 - Leveling Brackets (4)
- 304 Stainless Steel Parts:
 - Clamping collar (1)
 - Cover Channel (2)
 - Trough Extension (2)
 - Screws**

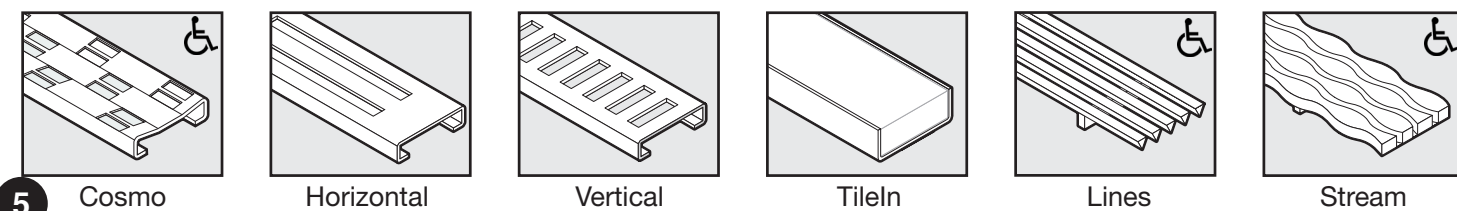
Other: Cover Removal Key (2)
 *See chart for part quantities of different drain lengths.



Model Number	*Spacers	**Screws
PVC2430D15, PVC2430D20	4	22
PVC3240D15, PVC3240D20	4	26
PVC4048D20	6	34
PVC4856D20	6	38
PVC5664D20	8	42
PVC6472D20	8	50

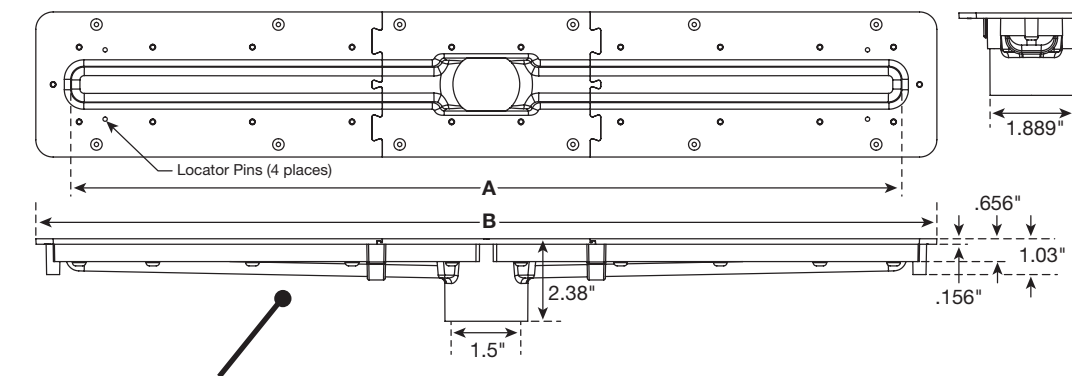
*Use with on-site poured pans or QuickDrain PET rigid foam panels.

Required Part - Drain Cover (must be purchased separately unless ordering Tub Replacement Kit)



Drain Assembly Kit - Down Outlet

Dimensions (1-1/2" Down Waste Outlet)



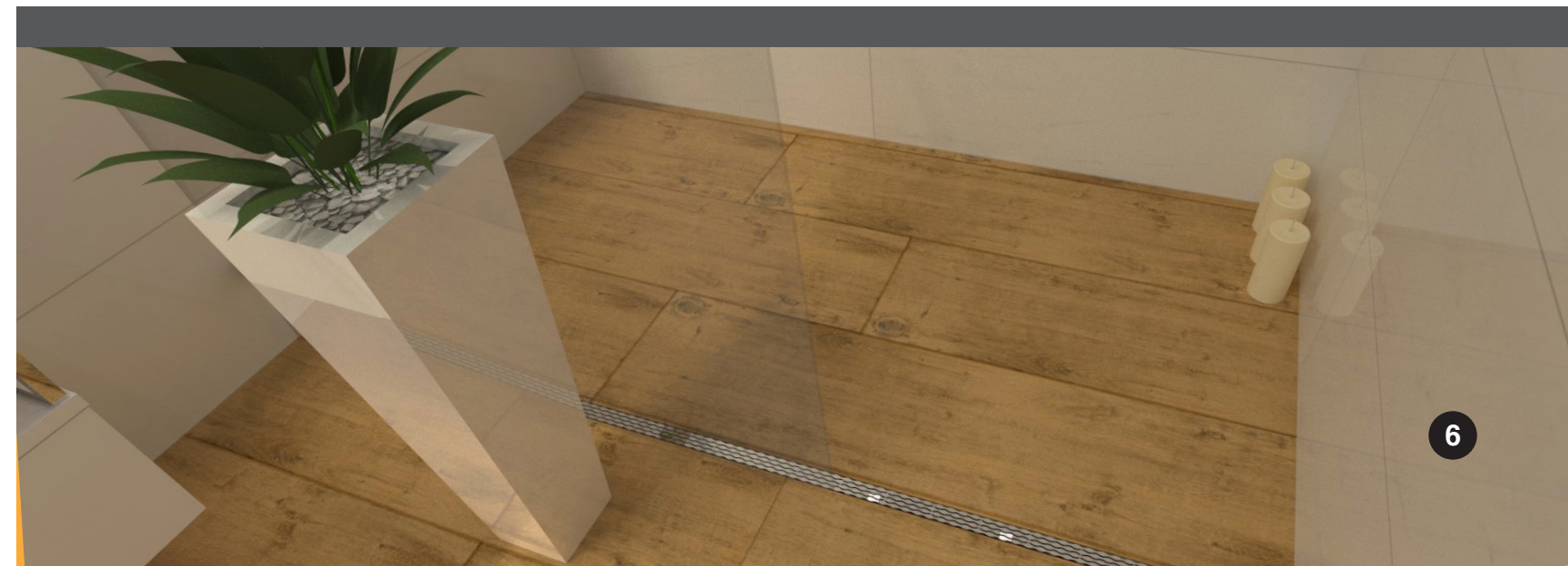
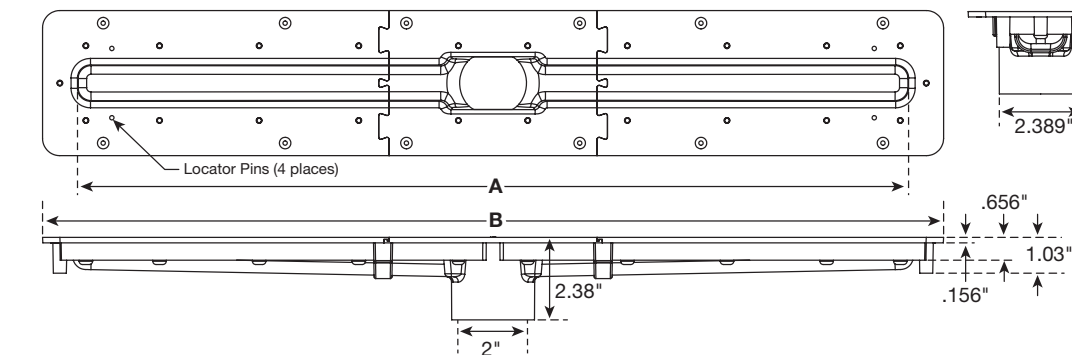
Model Number	A	B
PVC2430D15	24"	26"
PVC3240D15	32"	34"

Model Number	A	B
PVC2430D20	24"	26"
PVC3240D20	32"	34"
PVC4048D20	40"	42"
PVC4856D20	48"	50"
PVC5664D20	56"	58"
PVC6472D20	64"	66"

Installation Notes

Drain body can not be cut, but can be extended with use of trough extensions. Drain cover can be cut on site to fit wall to wall (curb) installation!

Dimensions (2" Down Waste Outlet)



Pan Assembly Kit - Down Outlet

Features

ShowerLine Pan-Tileable shower receptor for Linear Drain -is made of extruded rigid PET (polyethylene terephthalate) plastic foam. It is strong yet lightweight, non-reactive, economical, and shatterproof.

- Chemically stable, UV resistant and suitable for both interior and exterior use
- Can be used with both sheet and liquid topical water proofing
- Speed and consistency of installation
- Eliminates the need for traditional mud bed installations
- Lightweight, durable with high compressive strength 145PSI
- Interlocking design, can be quickly and easily modified to size and shape of on site conditions
- 100% Post Consumer recycled and fully recyclable.
- Meets IAPMO PS-106-2013

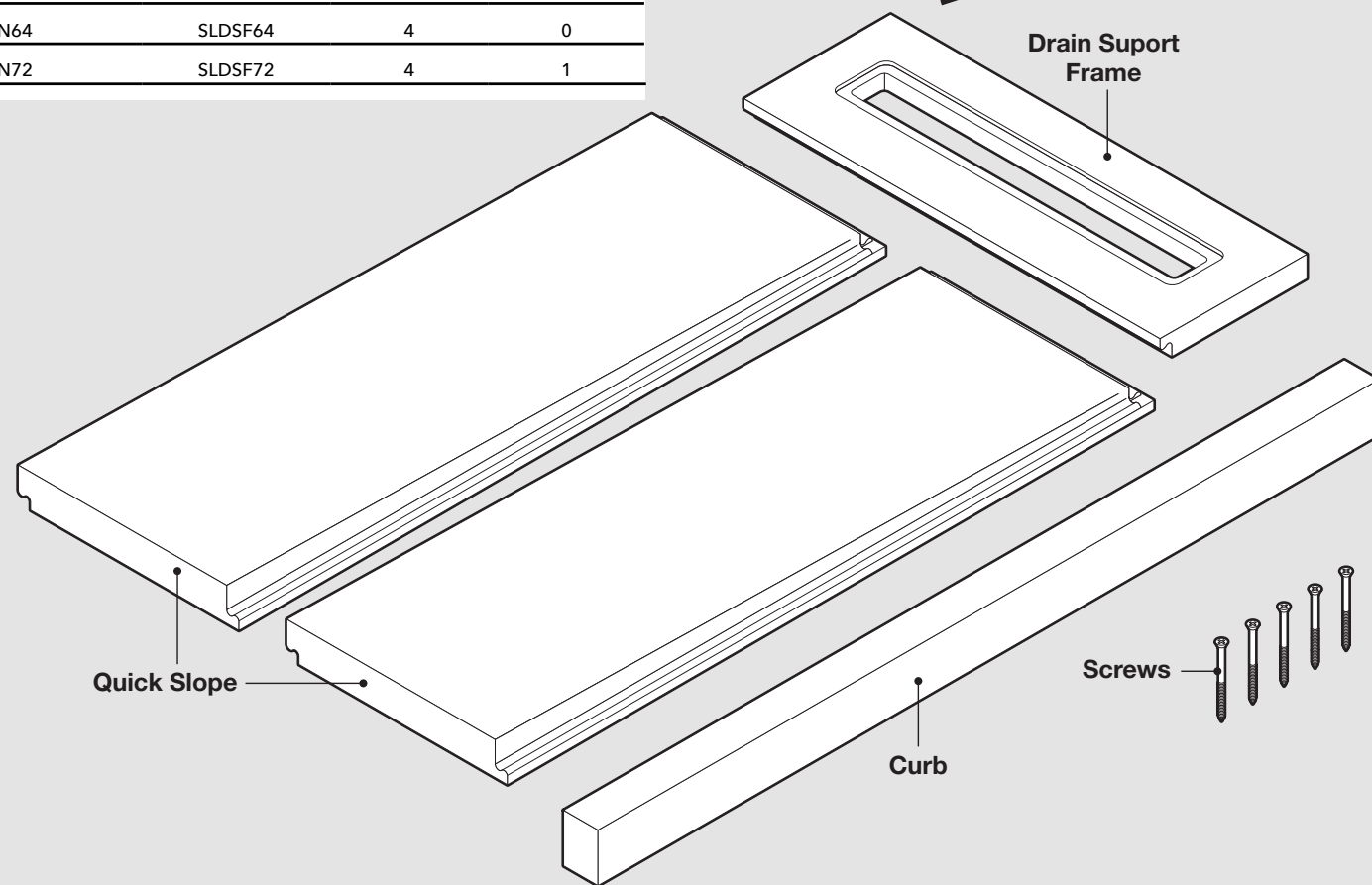
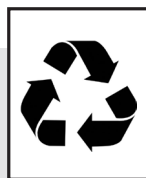
Model Number	*DSF	**SLQS1652	***SLQS852
SLPAN32	SLDSF32	2	0
SLPAN40	SLDSF40	2	1
SLPAN48	SLDSF48	3	0
SLPAN56	SLDSF56	3	1
SLPAN64	SLDSF64	4	0
SLPAN72	SLDSF72	4	1

Uses

- Interior and exterior use
 - Industrial, commercial and residential showers
 - Gang showers
 - Pet Showers
 - Suitable Substrates (Interior Only)
 - Concrete
 - Exterior Glue Plywood
 - Cement backer board**
 - OSB Or Avantech
- **Consult cement backer board manufacturer for specific installation recommendations

ShowerLine Pan Includes

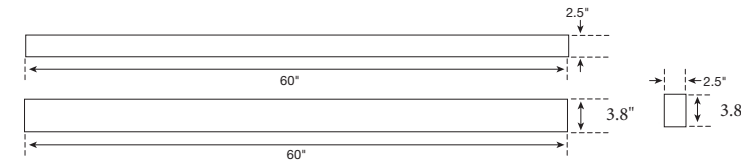
- Drain Support Frame*
- Quick Slope (SLQS1652**, SLQS852***)
- Curb (SL Curb)
- Screws (5)



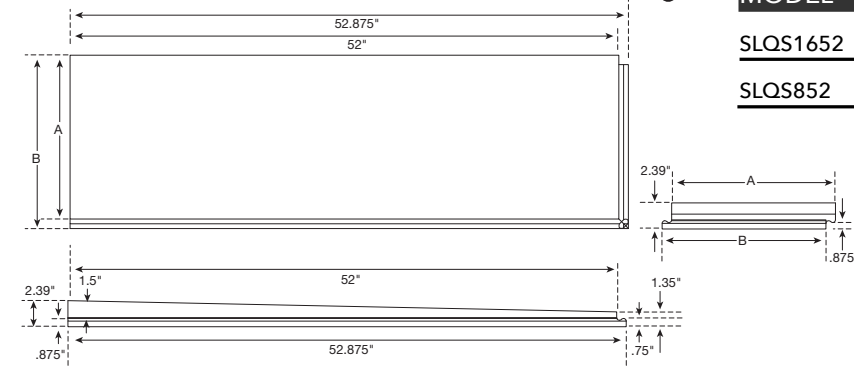
Pan Assembly Kit - Down Outlet



Dimensions (Curb) SLCURB



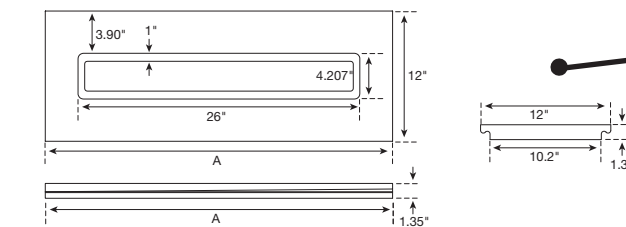
Dimensions (Quick Slope) SLQS1652, SLQS852



MODEL	A	B
SLQS1652	16"	16.875
SLQS852	8"	

MODEL	A
SLDSF32	32"
SLDSF40	40"
SLDSF48	48"
SLDSF56	56"
SLDSF64	64"
SLDSF72	72"

Dimensions (Drain Support Frame)



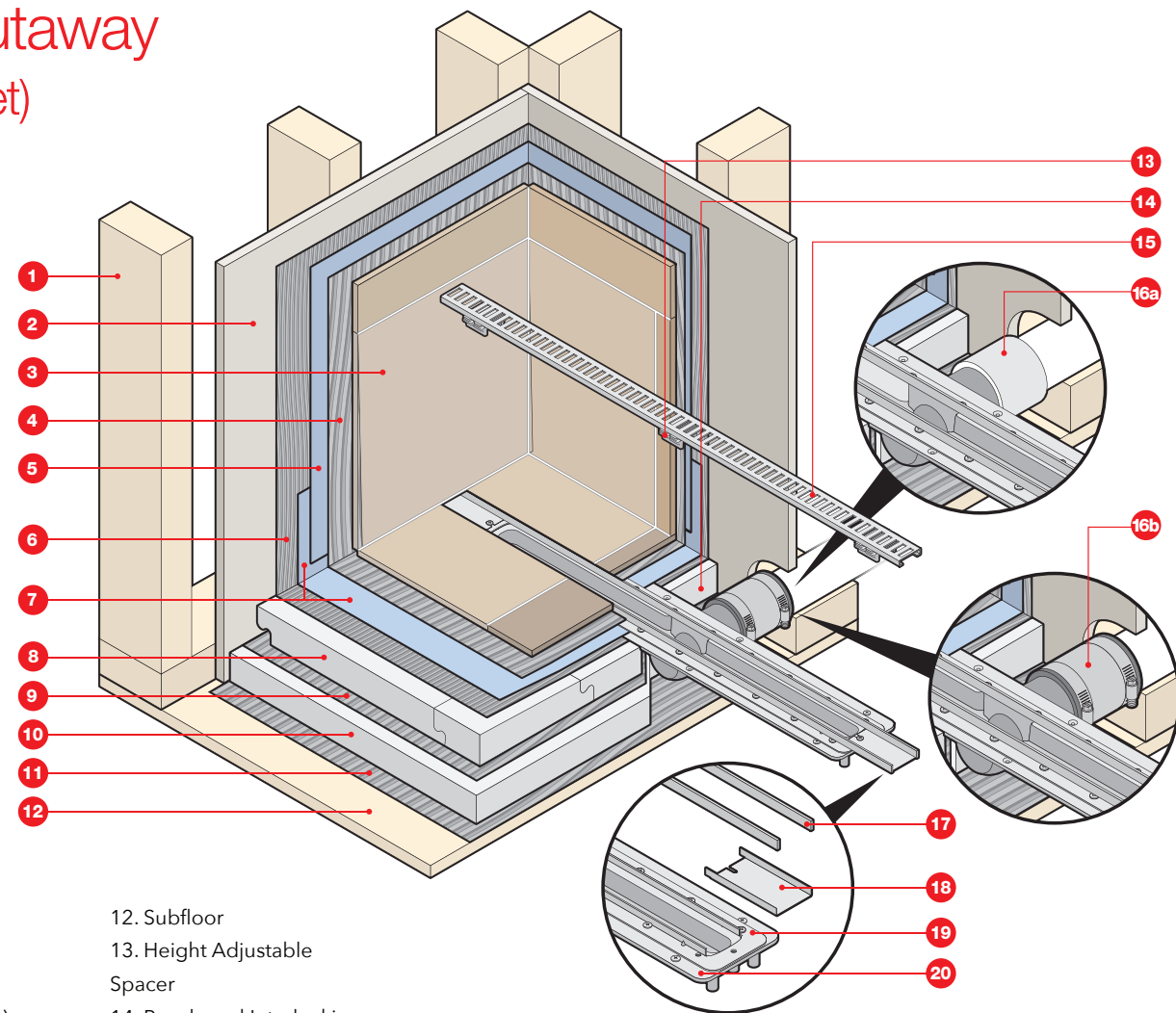
TRK32L-Tub Replacement Kit-Standard Curbed Shower (Up To 34.5" Deep And 64" Wide)-Liquid Waterproofing

INCLUDES(MODEL)	DESCRIPTION	INCLUDES OR SIZE
PVC2430D20	24" PVC Drain Body with a 2" vertical outlet. Trough length can be extended to 32" with the use of Trough Extensions (included). Waste outlet centered	(4) Leveling Brackets, (4) Height Adjustable Spacers, (1) Clamping Collar, (2) Cover Channels, (2) Trough Extensions, (22) Screws, (2) Cover Removal Keys
LINES32	Drain Cover- Lines 32" Long. Finish Brushed Stainless Steel	32"x1 1/2"x 3/8"
SLPAN32	Shower Pan Assembly kit for use with QuickDrain linear drain system	Quick Slope Panels, (1) 32" Drain Support Frame, (1) 3" Curb Form & (5) Screws
SLLWP	Liquid Waterproofing accessory kit for use with standard showers	(4) Inside Corners, (2) Curb Covers, (1) Reinforcement Tape

TRK32S-Tub Replacement Kit-Standard Curbed Shower (Up To 34.5" Deep And 64" Wide)-Sheet Waterproofing

INCLUDES(MODEL)	DESCRIPTION	INCLUDES OR SIZE
PVC2430D20	24" PVC Drain Body with a 2" vertical outlet. Trough length can be extended to 32" with the use of Trough Extensions (included). Waste outlet centered	(4) Leveling Brackets, (4) Height Adjustable Spacers, (1) Clamping Collar, (2)Cover Channels, (2) Trough Extensions, (22) Screws, & (2) Cover Removal Keys
LINES32	Drain Cover- Lines 32" Long. Finish Brushed Stainless Steel	32"x1 1/2"x 3/8"
SLPAN32	Shower Pan Assembly kit for use with QuickDrain linear drain system	(2) Quick Slope Panels (1) 32" Drain Support Frame (1) 3" Curb Form & (5) Screws
SLSWP32	Sheet Waterproofing assembly	48"x78" Membrane, (4) Inside Corners, (2) Curb Covers, (1) QDMUS Sealant Tube

Drain Cutaway (Side Outlet)



- 1. Stud Wall
- 2. Backer Board
- 3. Wall Tile and Grout
- 4. Thin Set (for wall tile)
- 5. Sheet Wallproofing
- 6. Thin Set
- 7. Sheet Shower Pan Waterproofing
- 8. Pre-sloped Interlocking PET Foam Panels
- 9. Thin Set
- 10. Flat Panel PET Foam
- 11. Thin Set
- 12. Subfloor
- 13. Height Adjustable Spacer
- 14. Pre-sloped Interlocking Drain Support Frame
- 15. Drain Cover
- 16a. PVC to PVC connection
- 16b. Shielded No-Hub Coupling
- 17. Cover Channel
- 18. Trough Extension
- 19. Clamping Collar
- 20. Drain Body

Cutaway illustration (shown) is sheet waterproofing with PET rigid foam (145PSI) panel installation. For different types of installations, please see other cutaway illustrations at www.quickdrainusa.com

Drain Assembly Kit - Side Outlet



Features:

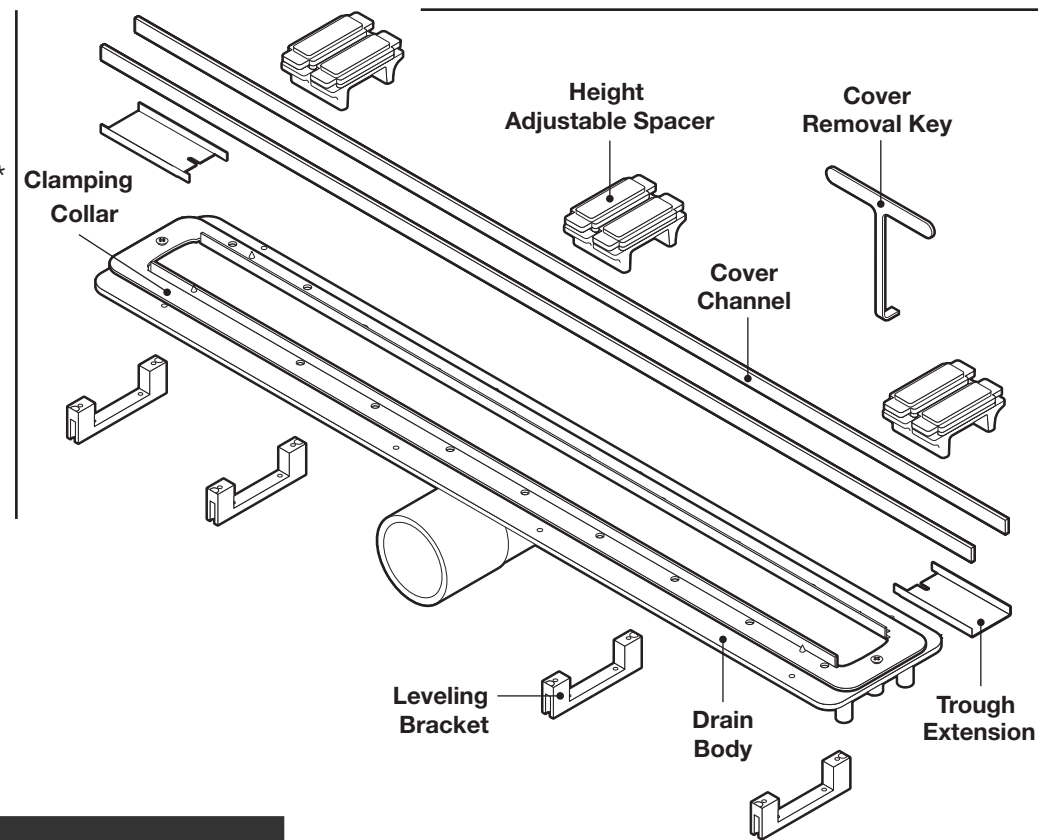
- Most important special feature is the internally sloped trough. This feature is a key to no stagnant water sitting in the trough any time and eliminates hard water build up
- Length adjustability of drain body with use of trough extensions (4" for each side, 8" total) to accommodate drain sizes from 24" - 72"
- Height adjustability of drain cover with use of spacers for different thicknesses of finish material from 3/8" to 3/4"
- Drain capacity for 2" outlet is 12 GPM in a shower pan with curb and 5 GPM in a shower pan without a curb at the entry. For 1.5" outlet it's 9 GPM and 3.5 GPM. (the actual volume is limited by the plumbing lines and P-trap)

Drain Assembly Includes:

- PVC Parts:
 - Drain body (1)
 - Leveling Brackets (4)
 - Height Adjustable Spacers*
- 304 Stainless Steel Parts:
 - Clamping Collar (1)
 - Cover Channel (2)
 - Trough Extension (2)
 - Screws**

Other: Cover Removal Key (2)

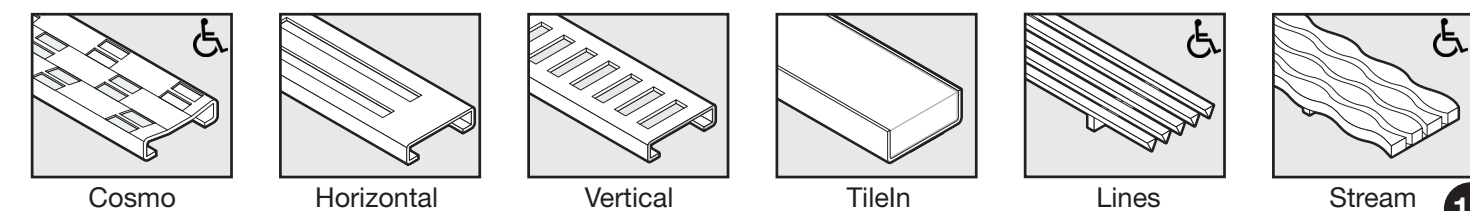
*See chart for part quantities of different drain lengths.



Model Number	*Spacers	**Screws
PVC2430D15-SWO, PVC2430D20-SWO	4	22

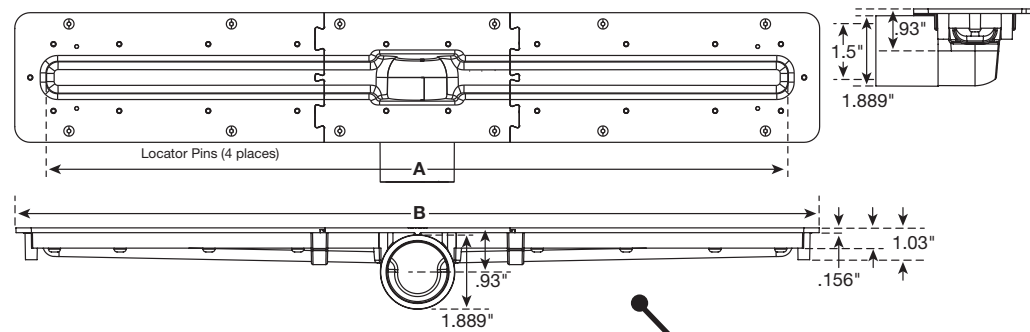
*Use with on-site poured pans or QuickDrain PET rigid foam panels.

Required Part - Drain Cover (must be purchased separately unless ordering Tub Replacement Kit)



Drain Assembly Kit - Side Outlet

Dimensions (1-1/2" Side Waste Outlet)



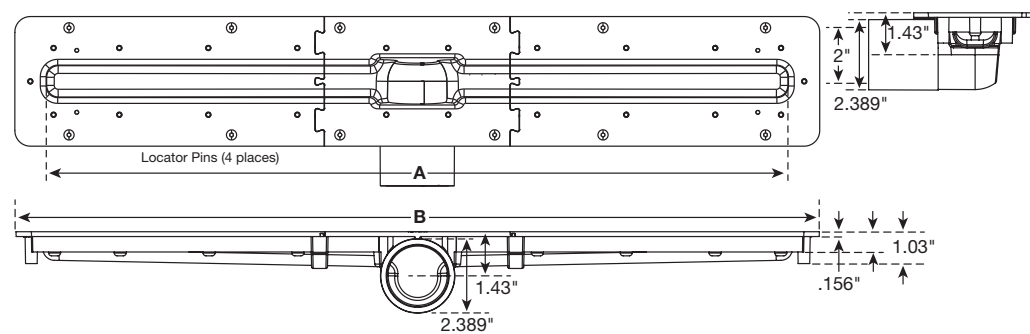
Model Number	A	B
PVC2430D15-SWO	24"	26"

Model Number	A	B
PVC2430D20-SWO	24"	26"

Installation Notes

Drain body can not be cut, but can be extended with use of trough extensions. Drain cover can be cut on site to fit wall to wall (curb) installation!

Dimensions (2" Side Waste Outlet)



Pan Assembly Kit - Side Outlet

SHOWERLINE drain

Features

- ShowerLine Pan-Tileable shower receptor for Linear Drain-is made of extruded rigid PET (polyethylene terephthalate) plastic foam. It is strong yet lightweight, non-reactive, economical, and shatterproof
- Chemically stable, UV resistant and suitable for both interior and exterior use
- Can be used with both sheet and liquid topical waterproofing
- Speed and consistency of installation
- Eliminates the need for traditional mud bed installations
- Lightweight, durable with high compressive strength 145PSI
- Interlocking design, can be quickly and easily modified to size and shape of on site conditions
- Meets IAPMO PS-106-2013
- 100% Post Consumer recycled and fully recyclable.

Uses

- Interior And Exterior Use
- Industrial, Commercial And Residential Showers
- Gang Showers
- Pet Showers

Suitable Substrates (Interior Only)

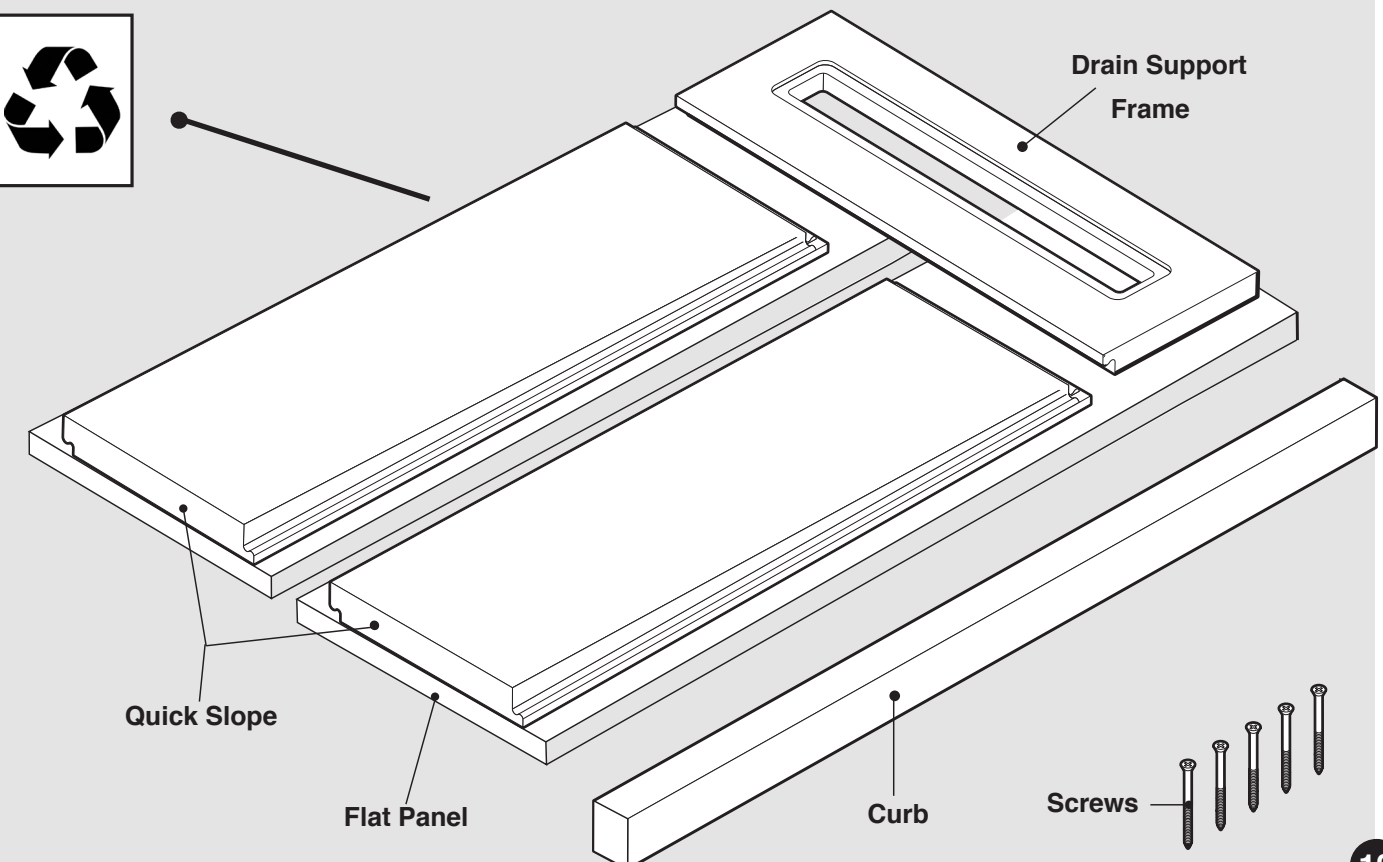
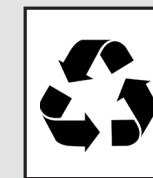
- Concrete
- Exterior Glue Plywood
- Cement Backer Board**
- OSB Or Avantech

** Consult Cement Backer Board Manufacturer For Specific Installation Recommendations

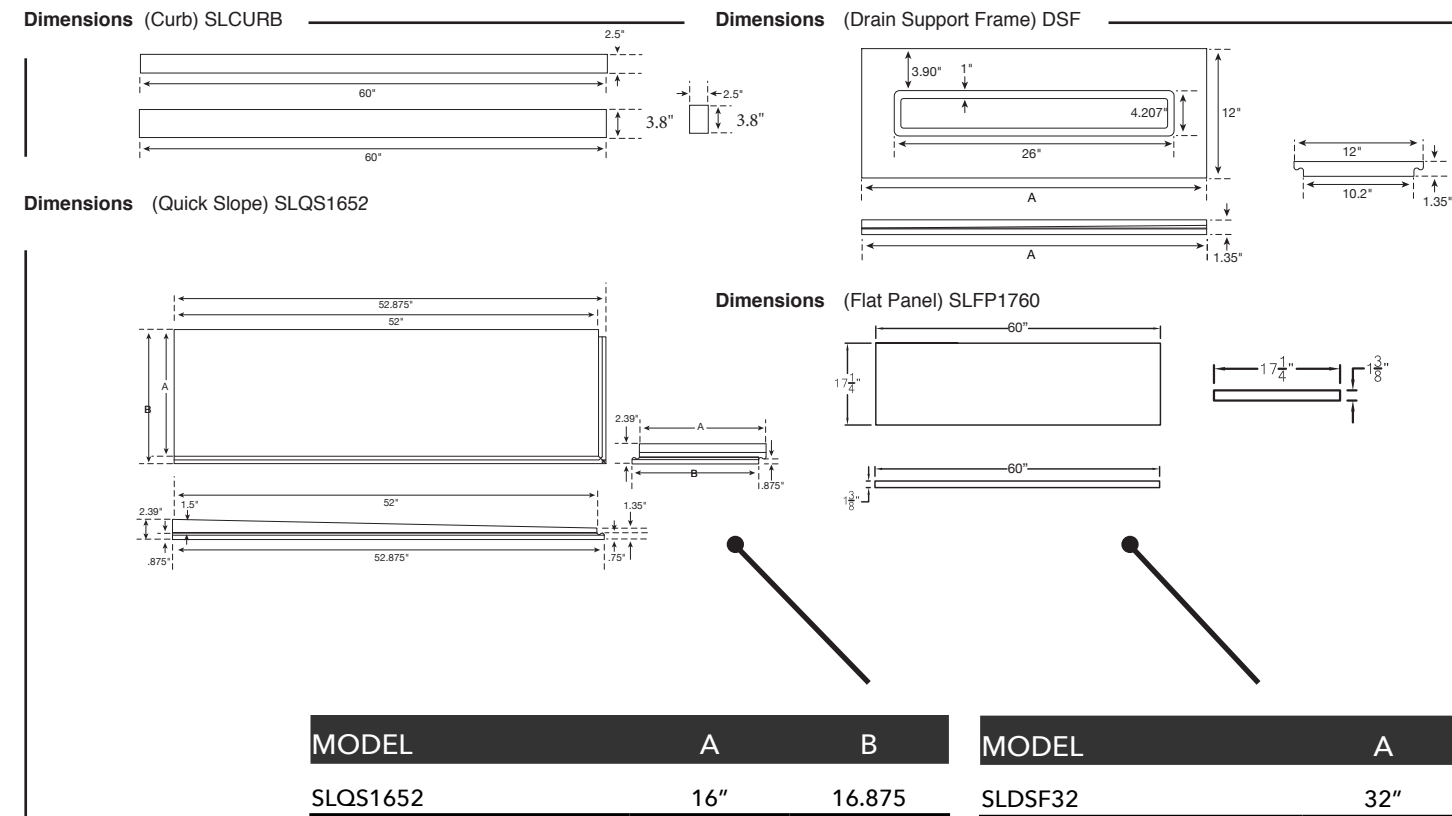
ShowerLine pan includes

- Drain Support Frame (*DSF)
- Quick Slope (**SLOS1652)
- Flat Panel (**SLFP1760)
- Curb (SL Curb)
- Screws (5)

	*DSF	**SLOS1652	***SLFP1760
SLPAN32-SWO	1	2	2



Pan Assembly Kit - Side Outlet



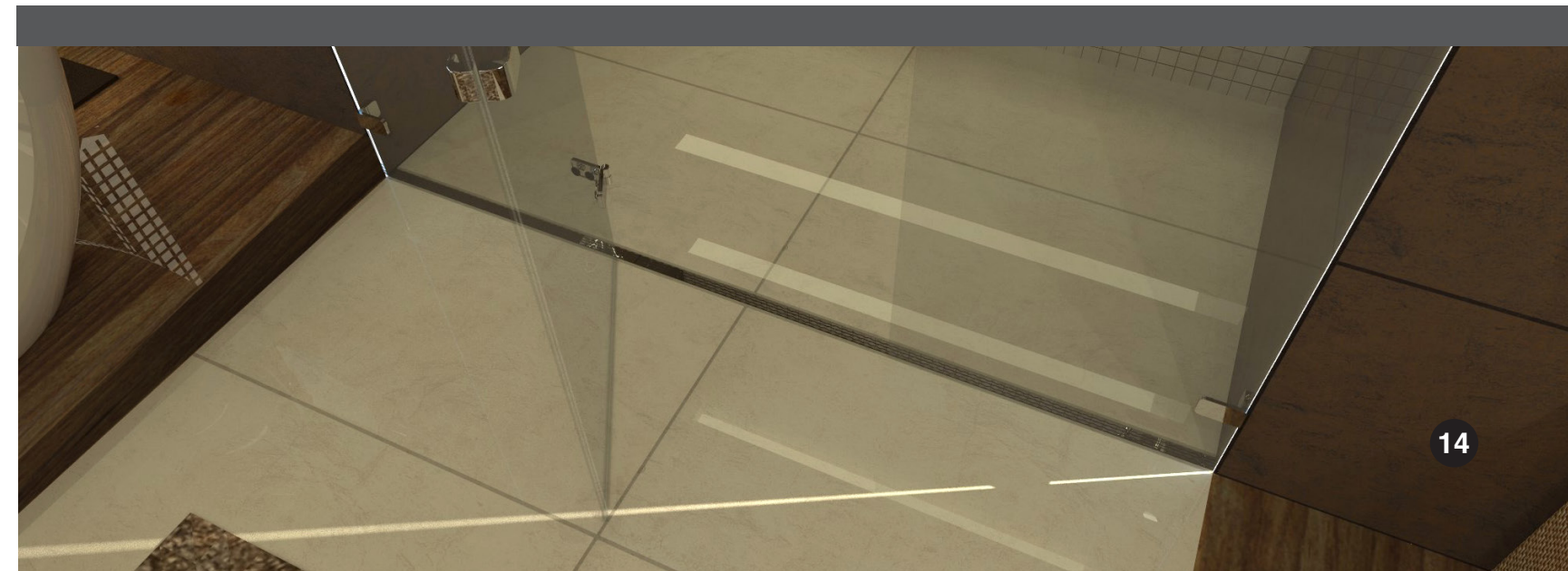
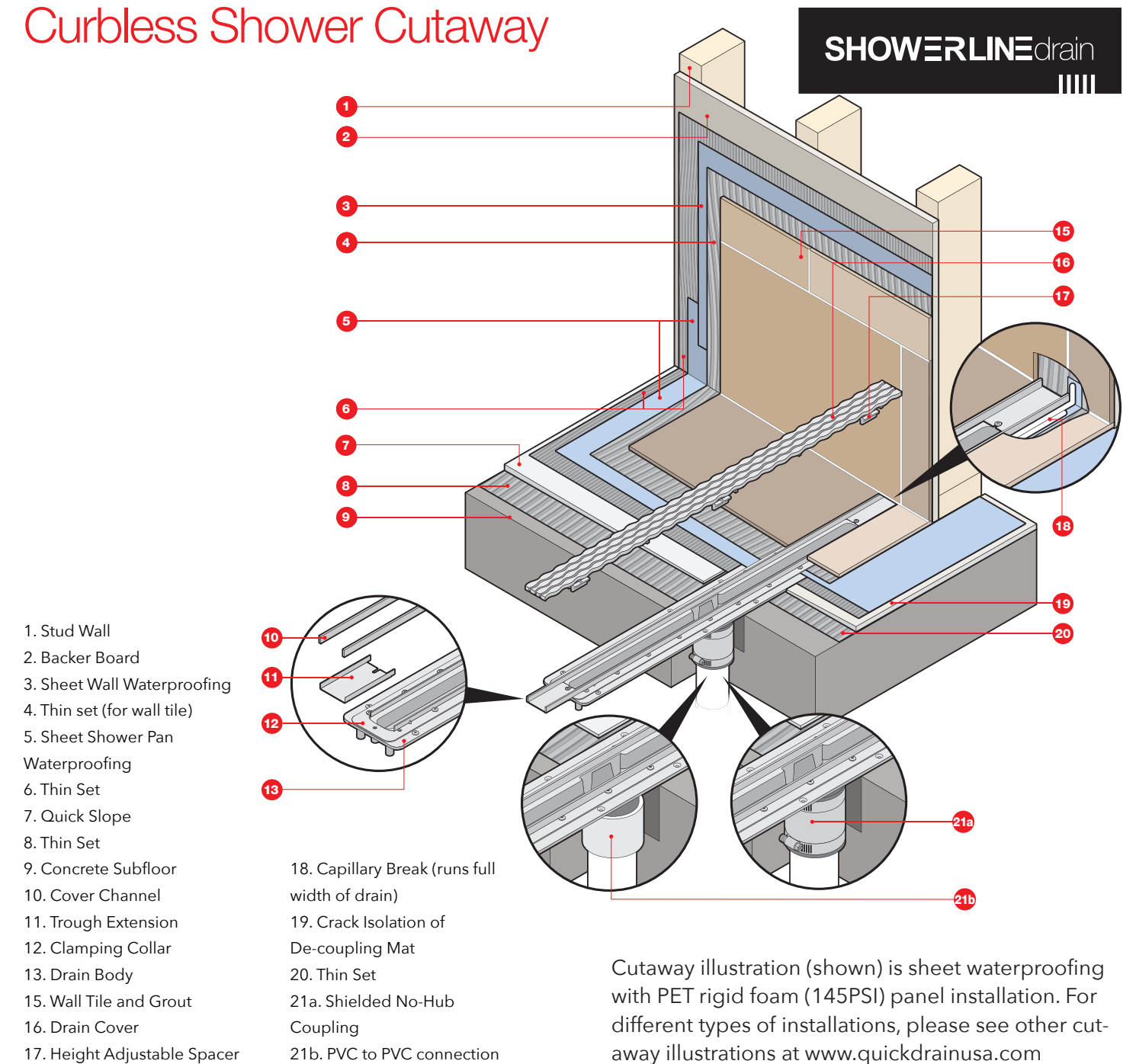
TRK32S-SWO - Tub Replacement Kit-On Top Of Slab Shower (Up To 34.5" Deep And 64" Wide)-Sheet Waterproofing

INCLUDES(MODEL)	DESCRIPTION	INCLUDES OR SIZE
PVC2430D20-SWO	24" PVC Drain Body with a 2" side waste outlet. Trough length can be extended to 32" with the use of Trough Extensions (included). Channels, (2) Trough Extensions, (22) Screws Waste outlet centered. 32"	(4) Leveling Brackets, (4) Height Adjustable Spacers, (1) Clamping Collar, (2) Cover Removal Keys
LINES32	Drain Cover- Lines 32" Long. Finish Brushed Stainless Steel	32"x1 1/2"x 3/8"
SLPAN32-SWO	Shower Pan Assembly kit for use with QuickDrain linear drain system	(2) Quick Slope Panels, (2) Flat Panels, (1) 32" Drain Support Frame, (1) 3" Curb Form, (5) Screws
SLSWP32	Sheet Waterproofing assembly kit	48"x78" Membrane, (4) Inside Corners (2) Curb Covers, (1) QDMUS Sealant Tube

TRK32LSWO-Tub Replacement Kit-On Top Of Slab Shower (Up To 34.5" Deep And 64" Wide)-Liquid Waterproofing

INCLUDES(MODEL)	DESCRIPTION	INCLUDES OR SIZE
PVC2430D20-SWO	24" PVC Drain Body with a 2" side waste outlet. Trough length can be extended to 32" with the use of Trough Extensions (included). Channels, (2) Trough Extensions, (22) Screws Waste outlet centered. 32"	(4) Leveling Brackets, (4) Height Adjustable Spacers, (1) Clamping Collar, (2) Cover Removal Keys
LINES32	Drain Cover- Lines 32" Long. Finish Brushed Stainless Steel	32"x1 1/2"x 3/8"
SLPAN32-SWO	Shower Pan Assembly kit for use with QuickDrain linear drain system	(2) Quick Slope Panels, (2) Flat Panels, (1) 32" Drain Support Frame, (1) 3" Curb Form, (5) Screws
SLLWP	Liquid Waterproofing accessory kit for use with standard showers	(4) Inside Corners, (2) Curb Covers, (1) Reinforcement Tape

Curbless Shower Cutaway



Curbless Shower Drain Assembly Kit

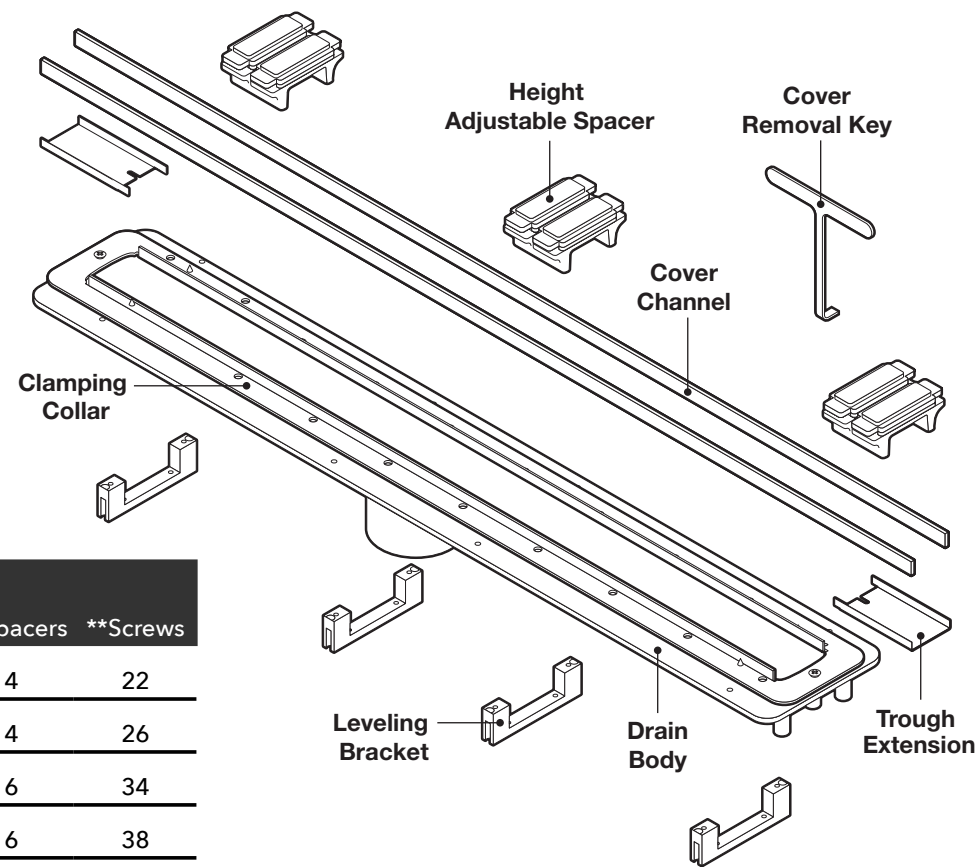
Features

- Most important special feature is the internally-sloped trough. This feature is a key to no stagnant water sitting in the trough anytime and eliminates hard water build up
- Length adjustability of drain body with use of trough extensions (4" for each side, 8" total) to accommodate drain sizes from 24" - 72"
- Height adjustability of drain cover with use of spacers for different thicknesses of finish material from 3/8" to 3/4"
- Use with any kind of waterproofing: topical sheet waterproofing (QTS, Kerdi™, Noble TST™), topical liquid waterproofing (AquaDefense™, RedGard™, Hydro Ban™, Ardex 8+9™), hot mop, lead pan, PVC vinyl liner, rubber liner, Chloraloy™, copper pan and fiberglass
- Drain capacity for 2" outlet is 12 GPM in a shower pan with curb and 5 GPM in a shower pan without a curb at the entry. For 1.5" outlet it's 9 GPM and 3.5 GPM. (the actual volume is limited by the plumbing lines and P-trap).

Drain Assembly Includes:

- PVC Parts:
 - Drain Body (1)
 - Height Adjustable Spacers*
 - Leveling Brackets (4)
- 304 Stainless Steel Parts:
 - Clamping Collar (1)
 - Cover Channel (2)
 - Trough Extension (2)
 - Screws**

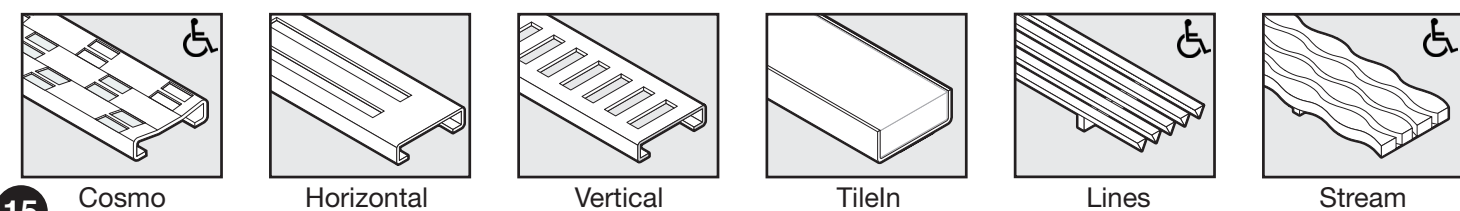
Other: Cover Removal Key (2)
*See chart for part quantities of different drain lengths.



Model Number	*Spacers	**Screws
PVC2430D15, PVC2430D20	4	22
PVC3240D20	4	26
PVC4048D20	6	34
PVC4856D20	6	38
PVC5664D20	8	42
PVC6472D20	8	50

*Use with on-site poured pans or QuickDrain PET rigid foam panels.

Required Part - Drain Cover (must be purchased separately unless ordering Tub Replacement Kit)

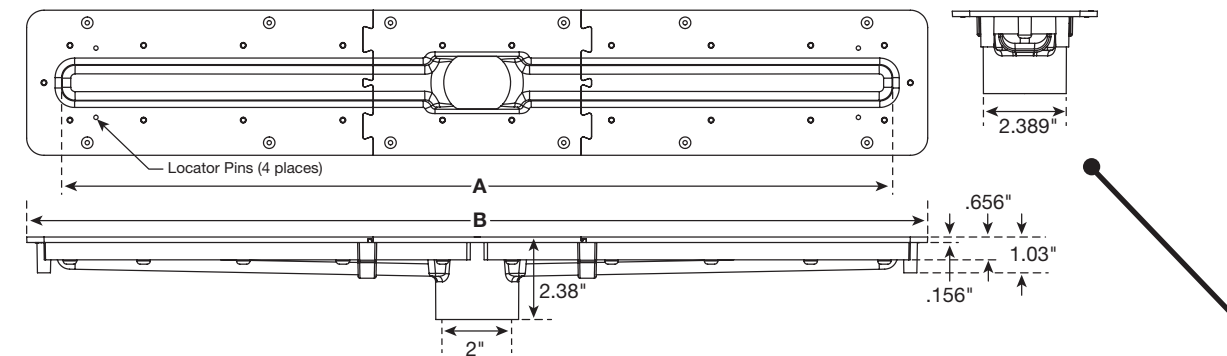


15 Cosmo Horizontal Vertical TileIn Lines Stream

Curbless Shower Drain Assembly Kit



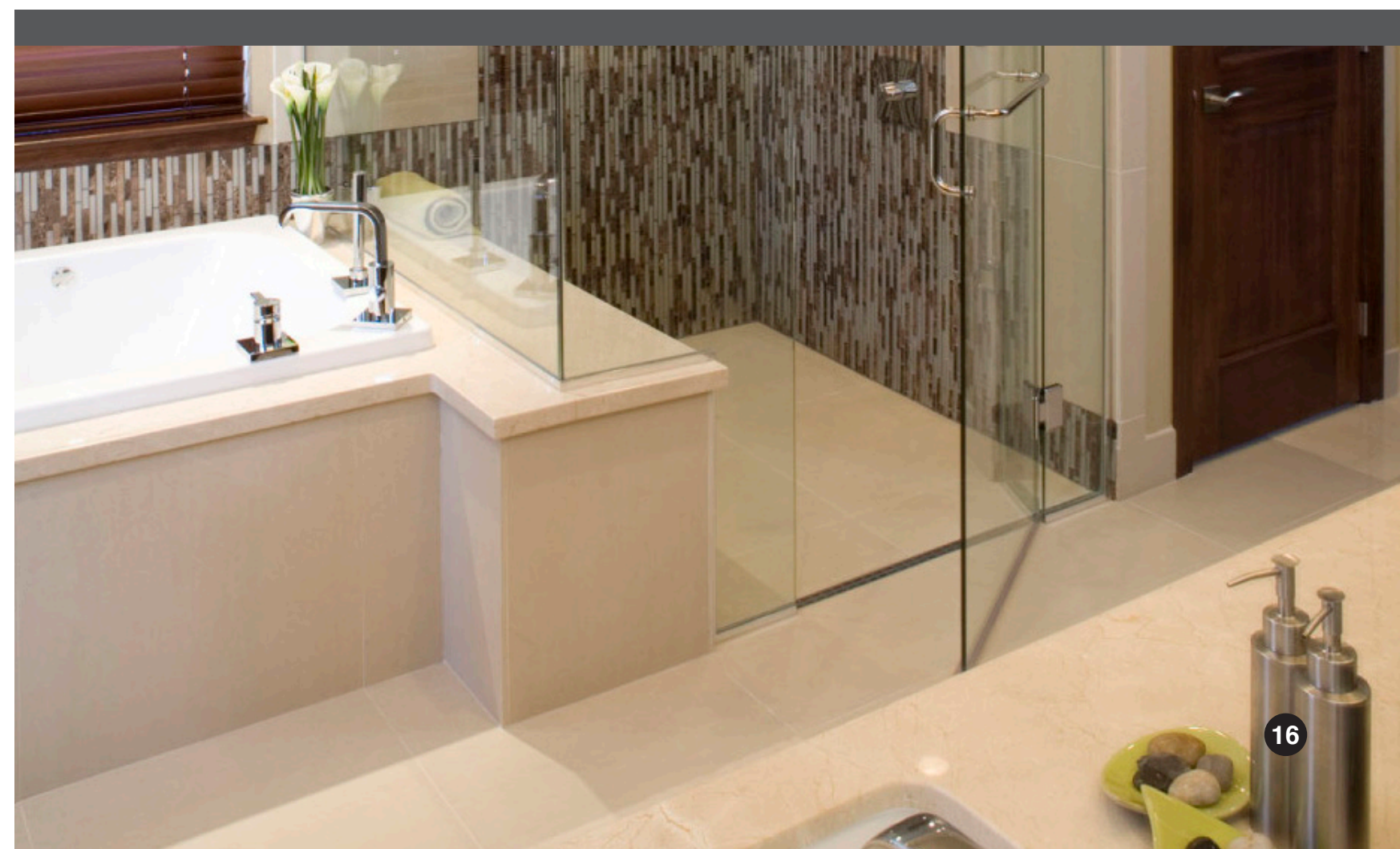
Dimensions (2" Down Waste Outlet)



Installation Notes

Drain body can not be cut, but can be extended with use of trough extensions. Drain cover can be cut on site to fit wall to wall (curb) installation!

Model Number	A	B
PVC2430D20	24"	26"
PVC3240D20	32"	34"
PVC4048D20	40"	42"
PVC4856D20	48"	50"
PVC5664D20	56"	58"
PVC6472D20	64"	66"



Curbless Shower Pan Assembly Kit

Features

- ShowerLine Pan-Tileable shower receptor for Linear Drain -is made of extruded rigid PET (polyethylene terephthalate) plastic foam. It is strong yet lightweight, non-reactive, economical, and shatterproof.
- Chemically stable, UV resistant and suitable for both interior and exterior use
- Can be used with both sheet and liquid topical water proofing
- Speed and consistency of installation
- Eliminates the need for traditional mud bed installations
- Lightweight, durable with high compressive strength 145PSI
- Interlocking design, can be quickly and easily modified to size and shape of on site conditions
- Meets IAPMO PS-106-2013
- 100% Post Consumer recycled and fully recyclable.

Uses

- Interior And Exterior Use
- Industrial, Commercial And Residential Showers
- Gang Showers
- Pet Showers

Suitable Substrates (Interior Only)

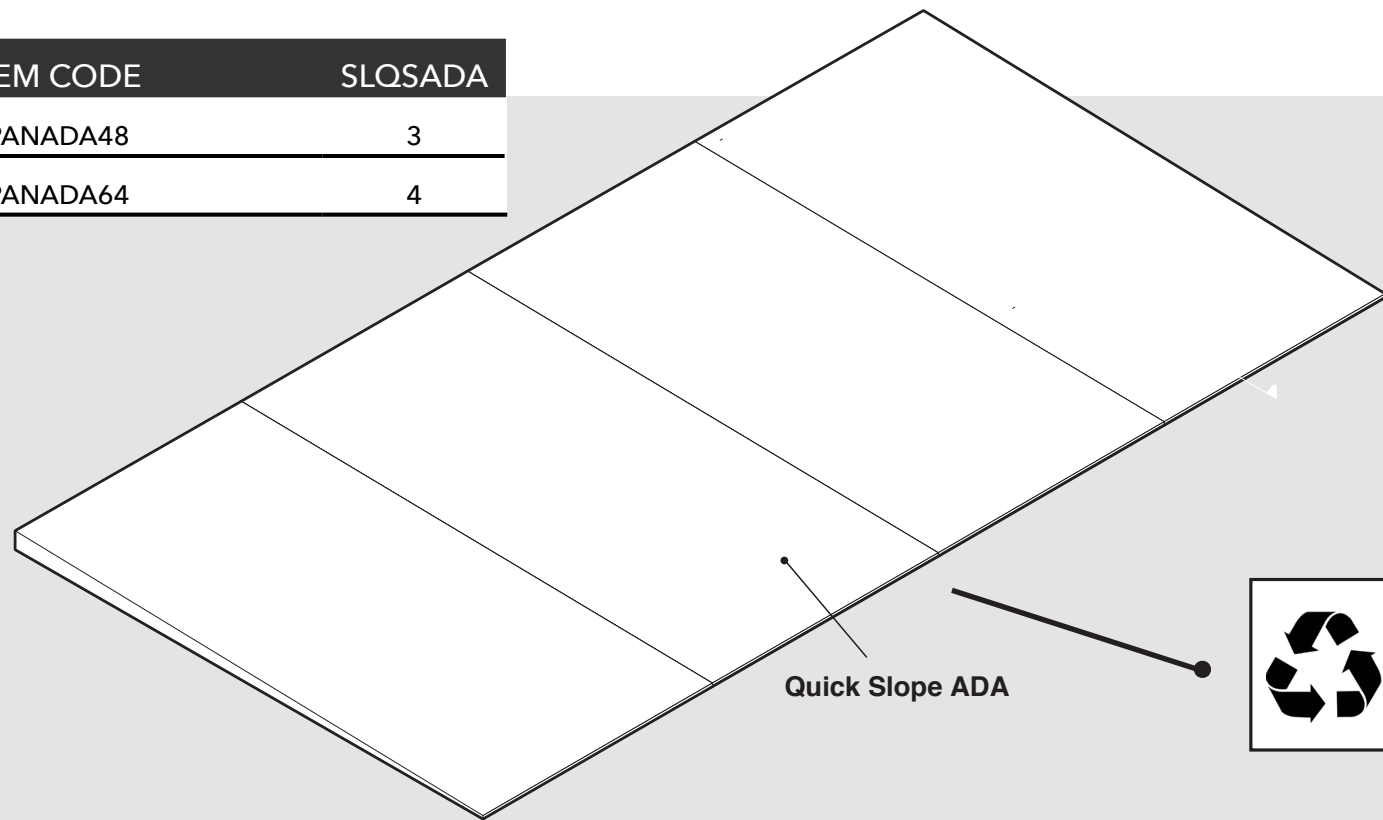
- Concrete
- Exterior Glue Plywood
- Cement Backer Board**
- OSB Or Avantech

** Consult Cement Backer Board Manufacturer For Specific Installation Recommendations

ShowerLine Pan Includes

- Quick Slope (SLQSADA)

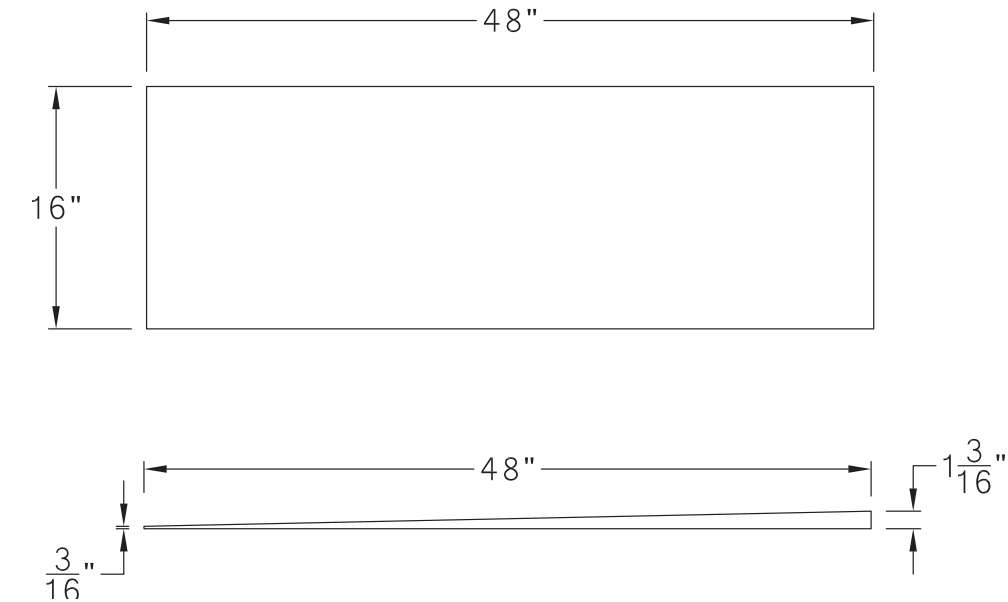
ITEM CODE	SLQSADA
SLPANADA48	3
SLPANADA64	4



Curbless Shower Pan Assembly Kit

SHOWERLINEdrain
||||

Dimensions (Quick Slope ADA) SLQSADA



TRKADAL-Tub Replacement Kit-Curbless shower (up to 52" deep and 64" wide)-liquid waterproofing

INCLUDES(MODEL)	DESCRIPTION	INCLUDES OR SIZE
PVC5664D20	56" PVC Drain Body with a 2" vertical outlet. Trough length can be extended to 64" with the use of Trough Extensions (included). Waste outlet centered	(4) Leveling Brackets, (4) Height Adjustable Spacers, (1) Clamping Collar, (2) Cover Channels, (2) Trough Extensions, (34) Screws, & (2) Cover Removal Keys
LINES64	Drain Cover- Lines 64" Long., Finish Brushed Stainless Steel	48"x1 1/2"x 3/8"
SLPANADA64	Shower Pan Assembly kit for use with QuickDrain linear drain system, for Curbless ADA Compliant Showers	(4) Quick Slope Panels
SLLWP-ADA	Liquid Waterproofing assembly kit for ADA compliant showers	(2) Inside Corners, (2) Outside Corners, (1) Reinforcement Tape

TRKADAS-Tub Replacement Kit-Curbless shower (up to 52" deep and 64" wide)-sheet waterproofing

INCLUDES(MODEL)	DESCRIPTION	INCLUDES OR SIZE
PVC5664D20	56" PVC Drain Body with a 2" vertical outlet. Trough length can be extended to 48" with the use of Trough Extensions (included). Waste outlet centered	(4) Leveling Brackets, (4) Height Adjustable Spacers, (1) Clamping Collar, (2) Cover Channels, (2) Trough Extensions, (34) Screws, & (2) Cover Removal Keys
LINES64	Drain Cover- Lines 64" Finish Brushed Stainless Steel	64"x1 1/2"x 3/8"
SLPANADA64	Shower Pan Assembly kit for use with QuickDrain linear drain system, for Curbless ADA Compliant Showers	(4) Quick Slope Panels
SLSWP-ADA	Sheet Waterproofing assembly kit for ADA compliant showers	60"x78" Membrane, (2) Inside Corners, (2) Outside Corners, (1) QDMUS Sealant Tube

Coming Soon by QuickDrain USA - A New Great Product

17 RETROFITdrain True Zero Entry Shower Without Floor Recess

Luxury & Style

QuickDrain USA offers some of the industry's most stylish drain cover designs. All covers are a slim 1.5" wide and are made of 18 Gauge or 304 Stainless Steel.

Vertical, Horizontal, TileIn, Lines*, Cosmo*, Stream*

*approved for installation in curbless threshold (ADA) applications.

Available in Brushed or Polished Stainless Steel

(Stream not available in polished)

32" | 40" | 48" | 56" | 64" | 72" trimmable lengths

Sized for Vertical-to-Vertical Surface Installation



STREAM
*A Michael Graves Design

COSMO
*A Michael Graves Design

LINES

HORIZONTAL
** Not recommended for curbless entry showers.

VERTICAL
** Not recommended for curbless entry

TILEIN
** Not recommended for curbless entry

MICHAEL GRAVES™ DESIGN

World-renowned architect and designer Michael Graves and QuickDrain USA have partnered to introduce two of the most alluring cover designs in the industry – Stream and Cosmo.

Both designs are crafted from durable 18 Gauge or solid 304 Stainless Steel. Made with the quality you've come to expect and proven virtually indestructible. Per code, the slim drain cover is removable.

Standard Sizes

Brushed or Polished Stainless Steel

32" 40" 48" 56" 64" 72" trimmable lengths

Sized for Vertical-to-Vertical Surface Installation

Planning

Easy installation starts with great planning. To get your ShowerLine installation started on the right path, we suggest the following:

1. Make a sketch of your layout with measurements noted.

2. Determine:

- a. Curbed or curbless installation | b. Number of fixtures
- c. Thickness of floor | d. How will the floor be pitched

Ordering

The ShowerLine is easy to order and consists of 4 simple steps.

Step 1: Select Your ShowerLine Drain Body

Choose a standard drain size that will fit comfortably into your space. Or ask QuickDrain to help.

Step 2: Choose Drain Cover Design

Six different cover design options, including designs by Michael Graves, with a variety of finishes and lengths to choose from.

Step 3: Choose Your ShowerLine Shower Pan Accessories

A variety of full kits are available that include panels (both sloped and flat) to help with the ease of installation.

Step 4: Choose Your Waterproofing Method

Liquid Waterproofing Kit: will include the fabric reinforcement tape, inside corners, outside corners or curb covers and transition tape (Installer will need to provide liquid waterproofing solution, Aqua D is recommended, but not the only option).

Sheet Waterproofing Kit: will include the membrane, inside corners, outside corners or curb covers and QDMUS sealant

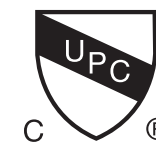


About QuickDrain USA

Since 2006, QuickDrain has been a woman-owned business, built on the belief that people can achieve great things.

Our promise is to provide continuous innovation, uncompromising quality, and to deliver linear drain systems that combine form, function, style, and affordability into one easy-to-install product. Today, you'll find our linear drain solutions in hotels, metropolitan hospitals and homes across the globe.

Headquartered in Frisco, CO, with manufacturing in Denver, CO, QuickDrain is proud to be made in the USA. All QuickDrain products are designed and manufactured to meet all Uniform Plumbing Code and International Plumbing Code standards (UPC & CUPC listing#: 7727 and PMG listing#: 1119 - Meets or exceeds ASME A112.18.2-2005)



Our technical support is second to none with on-site instruction and support. We also help by providing early design drawings of your projects to help you get started on the right foot in your planning .

Awards and Recognition

Our dedication to achieving great things has helped us win several awards from our peers in the industry, including:

2014

Best Bath Product Award
International Builders Show

Judge's Choice
K+BB

Innovative Product Award
Architectural Magazine

2015

ADEX Gold Award, Design Journal

A+ Popular Vote AND Jury Award
Architizer

Best of Year Award
Interior Design Magazine



QuickDrainUSA.com
(866)998-6685

Be sure to check out our other award winning products:

PROLINE drain & **WALL** drain by QuickDrainUSA





QUICKDRAIN USA™

PROLINE drain



MORE THAN A **LINEAR DRAIN**. THE **SOLUTION** FOR SHOWERS & WET AREAS.



PROLINE

ProLine by QuickDrain USA™ is a linear drain that is unlike any other. Providing style in design, flexibility in installation, and superior drain function. Perfect for the discerning homeowner as well as the hospitality and healthcare markets. ProLine provides beauty, function, and affordability all in one easy-to-install linear drain. And, it's made in the USA.

STYLE



FLEXIBILITY

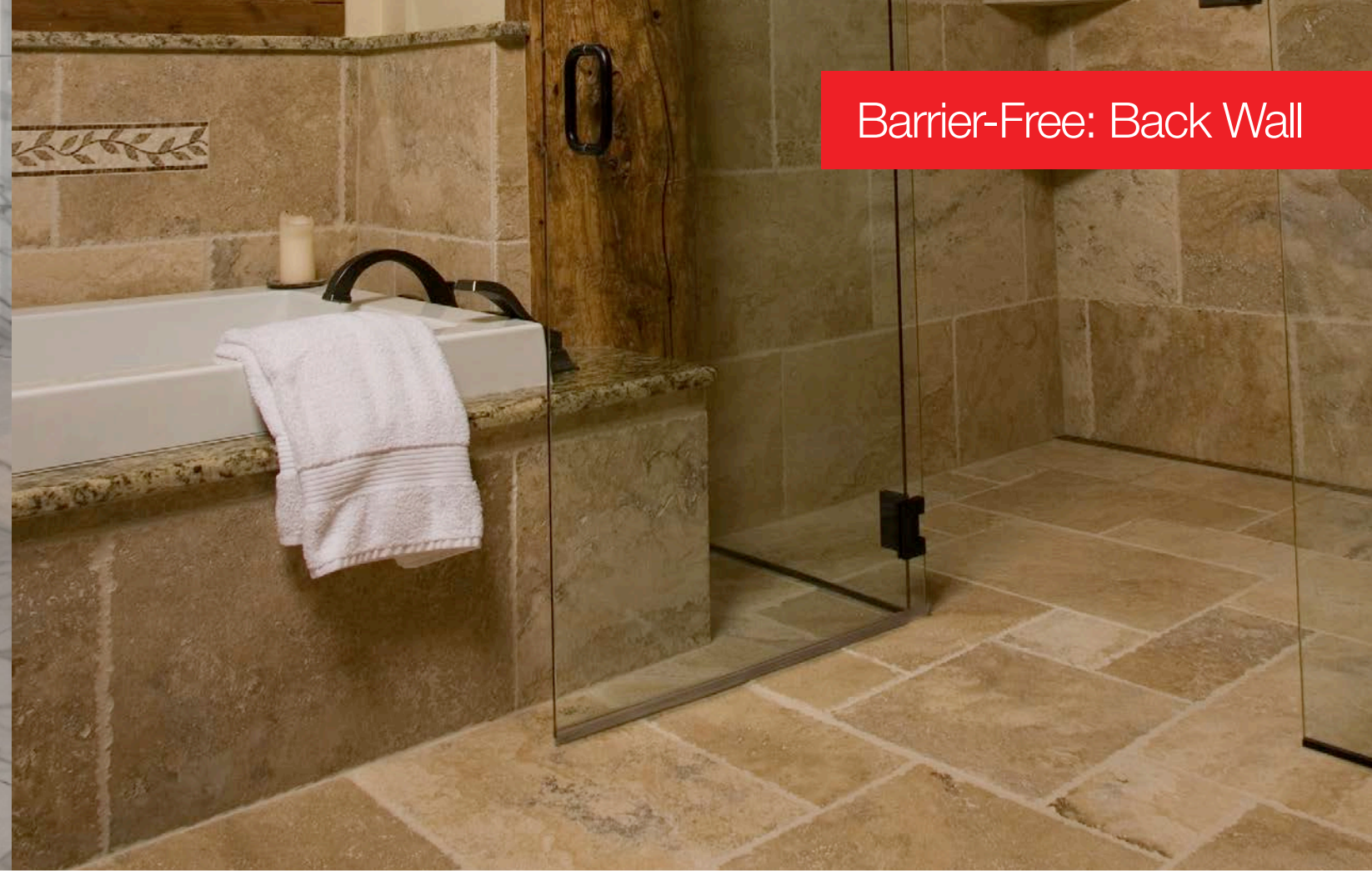


FUNCTION





Curbed



Barrier-Free: Back Wall



Barrier-Free: Entry



Wet Rooms



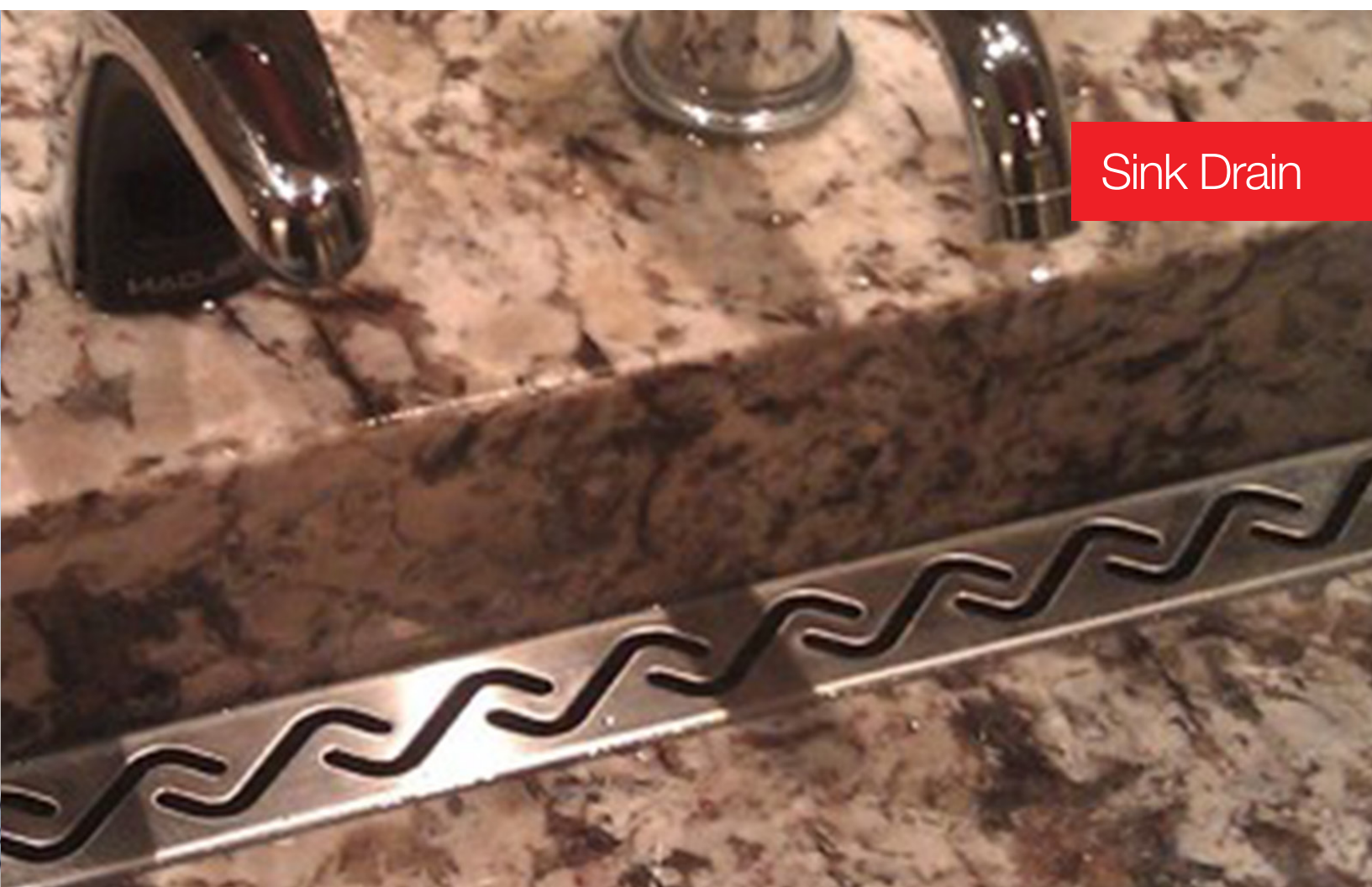
Health Care



Hospitality



Wet Areas, Pool & Outdoor

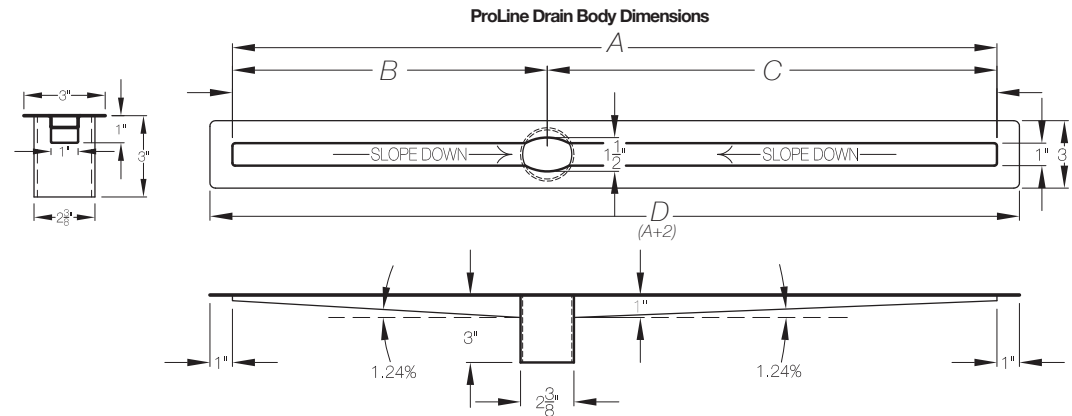


Sink Drain

Standard Drains

- ▶ 18 Gauge 316L Stainless Steel
- ▶ Fully sloped, low-profile 1" deep and 1" wide trough
- ▶ 2" I.D. schedule 10 stainless steel down spout waste outlet
- ▶ See chart below for outlet location - 3" offset or centered

- ▶ Standard flow rate with single outlet is 10 gpm, and 5 gpm when used at the entry to a curb-less shower as a primary shower drain
- ▶ Site adjustability: Our unique cover and spacer system allows for the height of the cover to be adjustable, even after installation
- ▶ Expandable by use of trough extensions
- ▶ Height-adjustable spacers



Model Number	A	B	C	D
PLD26-N	26	13	13	28
PLD27.5-N	27.5	13.75	13.75	29.5
PLD30-N	30	12	18	32
PLD33-N	33	16.5	16.5	35
PLD36-N	36	15	21	38
PLD40-N	40	17	23	42
PLD44-N	44	19	25	46
PLD46-N	46	23	23	48
PLD48-N	48	21	27	50
PLD52-N	52	23	29	54
PLD57-N	57	25.5	31.5	59
PLD63-N	63	31.5	31.5	65
PLD68-N	68	34	34	70

Drain Assembly Kit



Model Number	Height Adjustable Spacers	Cover Length
PLD26-N, PLD27.5-N	4	COVER 32
PLD30-N, PLD33-N, PLD36-N	4	COVER 40
PLD40-N, PLD44-N, PLD46-N	6	COVER 48
PLD48-N, PLD52-N	6	COVER 56
PLD57-N	8	COVER 64
PLD63-N, PLD68-N	8	COVER 72

Custom Drains

At QuickDrain USA, we pride ourselves on our ability to work with our customers to customize the right linear drain solution. Our industry-leading technical support can make recommendations for virtually any installation condition, allowing for custom shower drains. We offer many options to ensure a perfect fit for your project, whether constrained by code requirements or challenging retrofitting situations.

IRREGULAR DRAIN SIZES AND OUTLET LOCATIONS



ProLine linear drains can be manufactured in any size increment from 10" to 100". Keep in mind that drain bodies longer than 70" require two waste outlets in order to preserve the built-in slope in the drain trough. Additionally the location of waste outlet(s) can be customized.

MULTIPLE WASTE OUTLETS



Water flow of greater than 10 gallons per minute can be addressed with additional outlets on the drain body. The appearance remains the same as that of a standard linear shower drain, however, the capacity can double or triple. Any amount of flow volume can be achieved with this system.

SIDE WASTE OUTLETS



Primarily used in retrofitting situations, the side waste (or "horizontal") outlet can eliminate the need to drill through concrete. Where there are limitations on the space and location of existing floors and outlets, the side outlet drops and turns 90 degrees.

COMMERCIAL WASTE OUTLETS

Waste outlets can be made in custom lengths from 2" to 14" below the trough. Commercial facilities often require longer waste outlets due to issues with fireproofing. Longer pipes for waste lines go through the whole concrete floor and the plumbing connection is made below the fireproofing.



RESINOUS DRAINS

Resinous flooring drains are suitable for epoxy, urethane and sheet vinyl flooring, providing a 3/16" high frame to which to pour or run the flooring. This drain body does not require and therefore does not include spacers. However, as with our standard linear drains, the resinous drain can be custom sized from 10" to 100", include additional waste outlets and can include side or commercial.



SINK DRAINS

Made of 18 Gauge 316L Stainless Steel. Fully pitched trough with 1.5" I.D. schedule 10 stainless steel waste outlet. The total length of the drain with flanges is 20"; the finished length is 18". The PLD18S is not suitable for use as a floor drain.



Luxury & Style



STREAM
*A Michael Graves Design

COSMO
*A Michael Graves Design

LINES

HORIZONTAL
** Not recommended for curbless entry

VERTICAL
** Not recommended for curbless entry

TILEIN
** Not recommended for curbless entry

MICHAEL GRAVES™ DESIGN

World-renowned architect and designer Michael Graves and QuickDrain USA have partnered to introduce two of the most alluring cover designs in the industry – Stream and Cosmo.

Both designs are crafted from durable 18 Gauge or solid 304 Stainless Steel. Made with the quality you've come to expect and proven virtually indestructible. Per code, the slim drain cover is removable.

Custom lengths are available from 72 -120" for Cosmo, Vertical and Horizontal.

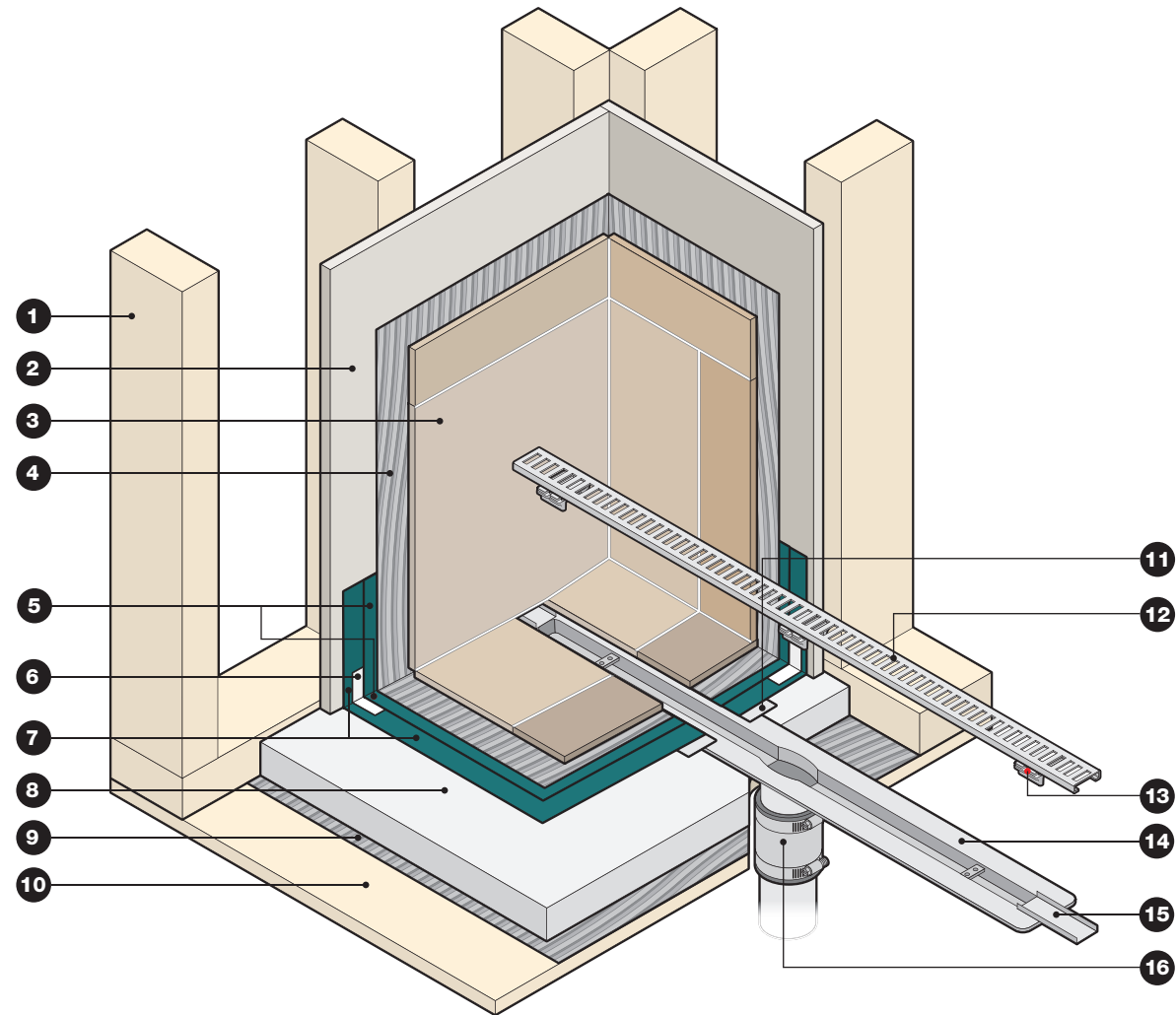
Standard Sizes

Brushed or Polished Stainless Steel

32" 40" 48" 56" 64" 72" trimmable lengths

Sized for Vertical-to-Vertical Surface Installation

Installation Cutaway



- | | |
|---|---------------------|
| 1. Stud Wall | 8. Quick Slope |
| 2. Backer Board | 9. Thin-set |
| 3. Wall tile and Grout | 10. Subfloor |
| 4. Thin-set (for wall tile) | 11. Transition Tape |
| 5. Second Layer of Liquid Waterproofing | 12. Drain Cover |
| 6. Reinforcing Fabric | 13. Spacer |
| 7. First Layer of Liquid Waterproofing | 14. Drain Body |
| | 15. Extension |
| | 16. No-hub Coupling |

Drain Accessories

- Placement Brackets
- Short Leveling Brackets
- Long Leveling Brackets
- 4" Trough Extensions
- Stainless Steel Spacers

Shower Pan Accessories

- QuickSlope One Way Panels
- QuickSlope Flat Panels
- ADA 48" QuickSlope Kit
- ADA 64" QuickSlope Kit
- Curbs

Drain at Entry



Drain at Back Wall



All ProLine drain bodies are made of 18 Gauge 316L Stainless Steel, with fully sloped troughs. ProLine drain bodies ship prepped and ready for a liquid waterproofing installation, with the components listed below:

- | | |
|-----------------------------|----------------------|
| • Trough Extensions | • Inside Corners |
| • No-hub Coupling | • Outside Corners |
| • Height Adjustable Spacers | • Reinforcement Tape |
| • Transition Tape | • Cover Removal Keys |

Planning

Easy installation starts with great planning. To get your ProLine installation started on the right path, we suggest the following:

1. Make a sketch of your layout with measurements noted.

2. Determine:

- a. Curbed or curb-less installation
- b. Number of fixtures
- c. Thickness of floor
- d. How will the floor be pitched

★ USE OUR QUICKDRAIN ONLINE PLANNING CONFIGURATOR ★

Ordering

The ProLine is easy to order and consists of 4 simple steps.

Step 1: Select Your ProLine Drain Body

Choose a standard drain size that will fit comfortably into your space. Or ask QuickDrain to help customize a drain body to accommodate non-standard sizes, multiple waste outlets and more. Liquid waterproofing accessories are included in the drain assembly kit (inside corners, outside corners, reinforcing tape, transition tape).

Step 2: Choose Drain Cover Design

Six different cover design options, including designs by Michael Graves, with a variety of finishes and lengths to choose from to accommodate both standard and customized drain body options.

Step 3: Choose Your ProLine Shower Pan Accessories

A variety of full kits are available that include panels (both sloped and flat) to help with the ease of installation.

Step 4: Choose Your Optional Drain Accessories, if needed

If you need brackets, corner connectors, spacers and more, you can order them all from QuickDrain to help ensure your ProLine installation runs smoothly.

About QuickDrain USA

Since 2006, QuickDrain has been a woman-owned business, built on the belief that people can achieve great things.

Our promise is to provide continuous innovation, uncompromising quality, and to deliver linear drain systems that combine form, function, style, and affordability into one easy-to-install product. Today, you'll find our linear drain solutions in hotels, metropolitan hospitals and homes across the globe.

Headquartered in Frisco, CO, with manufacturing in Denver, CO, QuickDrain is proud to be made in the USA. All QuickDrain products are designed and manufactured to meet all Uniform Plumbing Code and International Plumbing Code standards (UPC & CUPC listing#: 6181 and PMG listing#: 1042 - Meets or exceeds ASME A112.18.2-2005)



Our technical support is second to none with on-site instruction and support. We also help by providing early design drawings of your projects to help you get started on the right path.

Awards and Recognition

Our dedication to achieving great things has helped us win several awards from our peers in the industry, including:

2014

Best Bath Product Award
International Builders Show

Judge's Choice
K+BB

Innovative Product Award
Architectural Magazine

2015

ADEX Gold Award, Design Journal

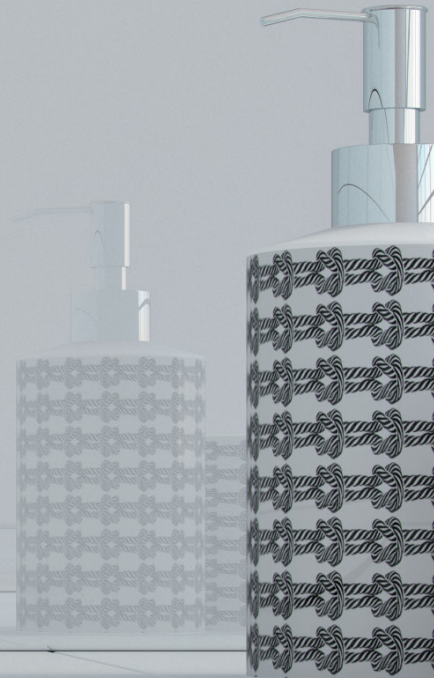
A+ Popular Vote AND Jury Award
Architizer



Find us on the web at
QuickDrainUSA.com



QUICKDRAIN USA™



WALL drain

MORE THAN A **LINEAR DRAIN**. THE **SOLUTION** FOR SHOWERS & WET AREAS.

Is it a spark that starts the wheels of innovation or creativity?
Maybe it's the drive to make old ideas better.



Ideas in motion.

WALL drain

by QUICKDRAIN USA

Where does innovation begin?

At QuickDrain USA we continually push the boundaries of design, function and flexibility. Design should be fluid, clean and continual, however one should not have to sacrifice function or flexibility. Introducing WallDrain the complete drain and shower pan solution.

Design continuity, meet your match.

There are no metal distractions, with WallDrain. Water will gracefully exit into the wall, like magic!

FUNCTION



Patented Sure Flow System™

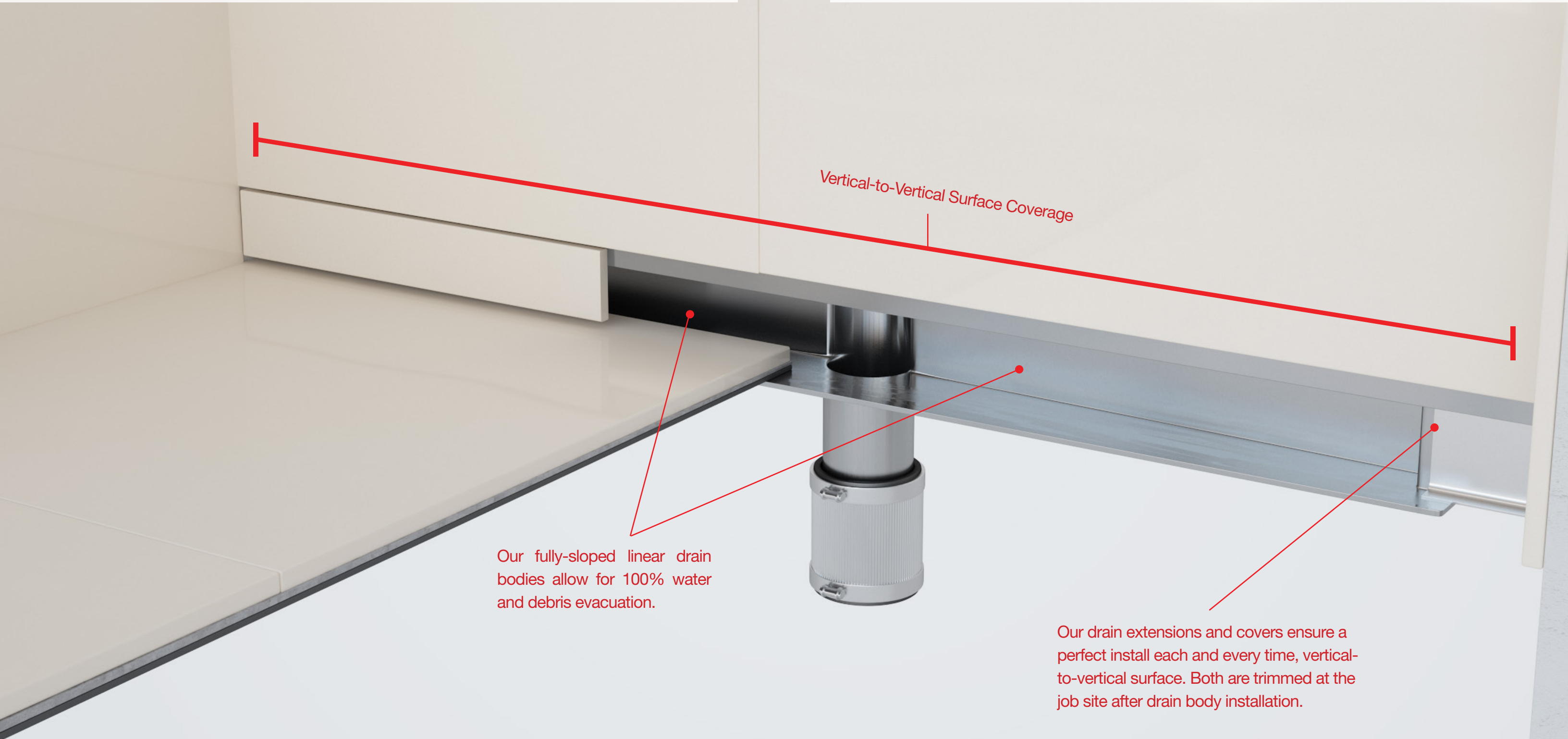
The WallDrain Sure Flow System Guarantee means no water is left behind.

FLEXIBILITY



On-Site Adjustability

QuickDrain USA has created a system that adapts to job site conditions.



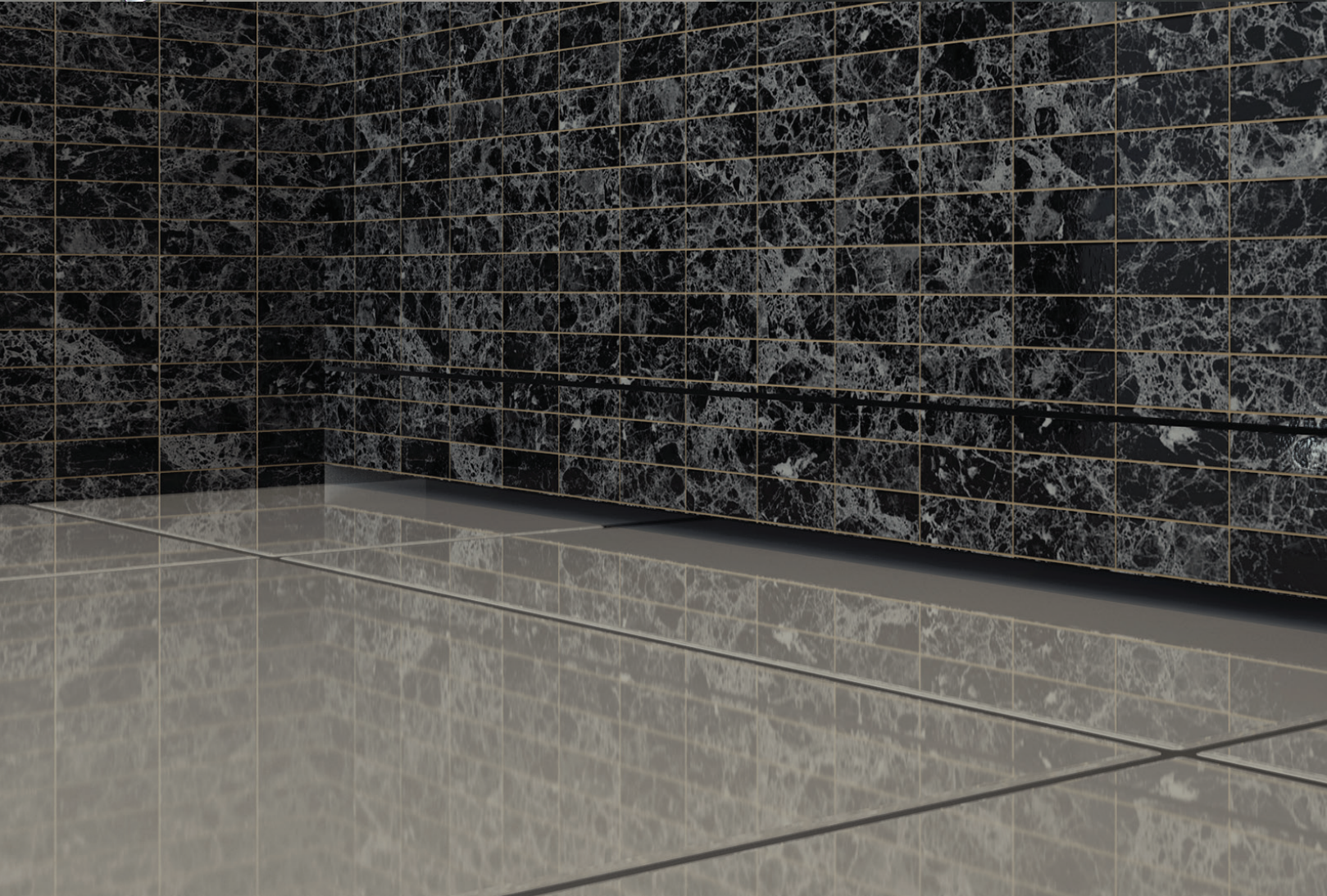
Vertical-to-Vertical Surface Coverage

Our fully-sloped linear drain bodies allow for 100% water and debris evacuation.

Our drain extensions and covers ensure a perfect install each and every time, vertical-to-vertical surface. Both are trimmed at the job site after drain body installation.

WallDrain Barrier-Free

WallDrain is transitional, it is neither Traditional nor Contemporary, but flows with the design of its environment.



WallDrain Curbed Shower



Although WallDrain is different, it is rooted within our QuickDrain USA core values:

- ▶ Jobsite adjustability
- ▶ Fully-sloped troughs
- ▶ Vertical-to-vertical surface
- ▶ Quick and easy installation

Standard Sizes

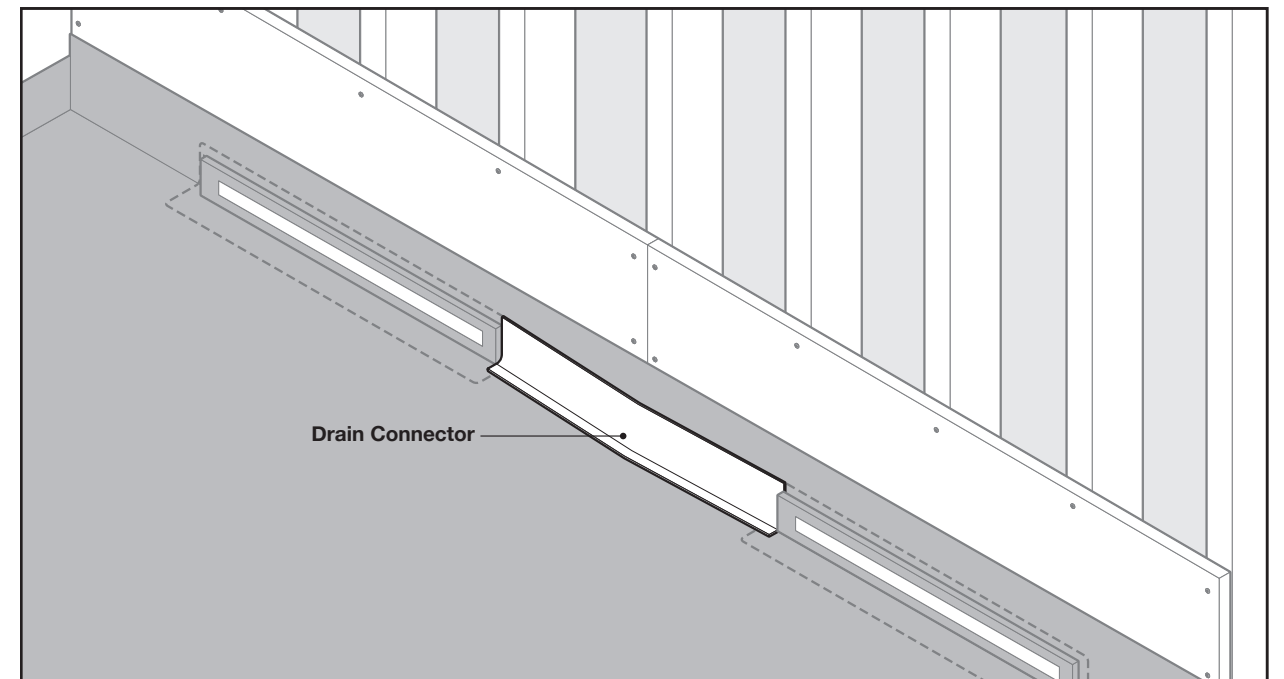
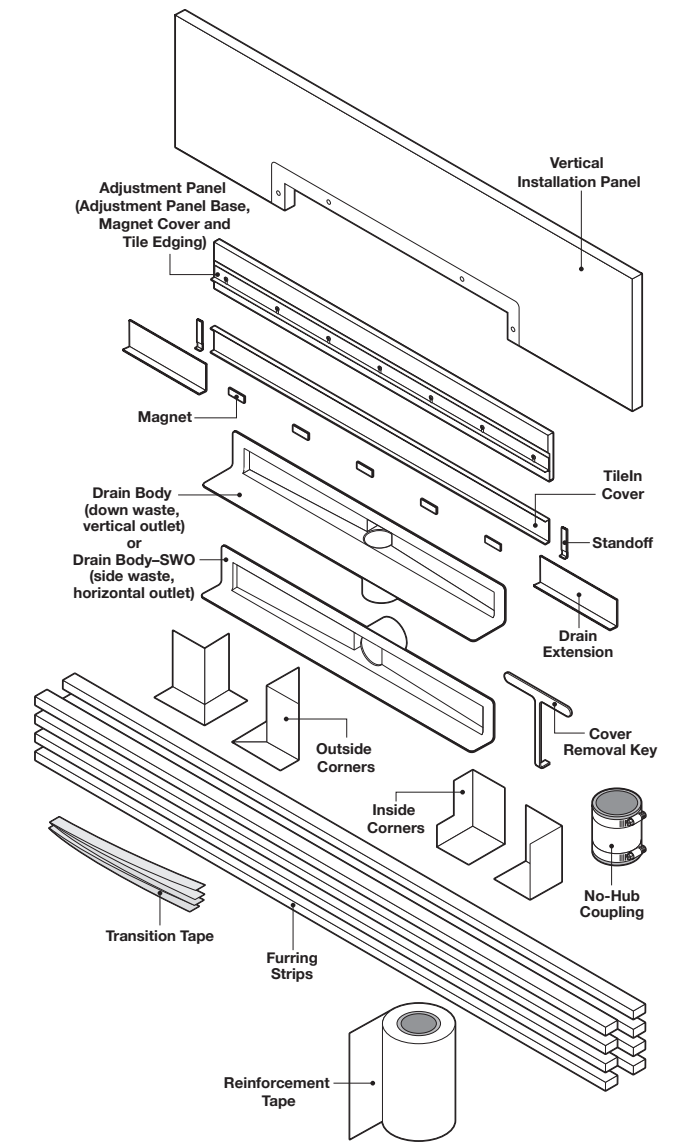
WallDrain comes in:



- ▶ Onsite adjustability can accommodate shower lengths of 26" - 72" with use of one drain and 56" - 96" with two drains linked together.
- ▶ Can be used with topical liquid waterproofing or sub-drainage systems (hot mop, copper, or PVC pan liners).

Configurations:

Each WallDrain size is available as a standard vertical drain waste outlet configuration or a side waste outlet configuration.



Ordering

Ordering WallDrain is fast and simple.

Use our QuickDrain online planning configurator to make planning easy.

Step 1: Measure from finished wall to finished wall

Step 2: Determine size of the drain, outlet configuration and water volume

Step 3: Contact one of our authorized dealers to place your order



About QuickDrain USA

Since 2006, QuickDrain has been a woman-owned business, built on the belief that people can achieve great things.

Our promise is to provide continuous innovation, uncompromising quality, and to deliver linear drain systems that combine form, function, style, and affordability into one easy-to-install product. Today, you'll find our linear drain solutions in hotels, metropolitan hospitals and homes across the globe.

Headquartered in Frisco, CO, with manufacturing in Denver, CO, QuickDrain is proud to be made in the USA. All QuickDrain products are designed and manufactured to meet all Uniform Plumbing Code and International Plumbing Code standards.



Our technical support is second to none with on-site instruction and support. We also help by providing early design drawings of your projects to help you get started on the right path.

Awards and Recognition

Our dedication to achieving great things has helped us win several awards from our peers in the industry, including:

2014

Best Bath Product Award
International Builders Show

Judge's Choice
K+BB

Innovative Product Award
Architectural Magazine

2015

ADEX Gold Award, Design Journal

A+ Popular Vote AND Jury Award
Architizer



Find us on the web at

QuickDrainUSA.com

