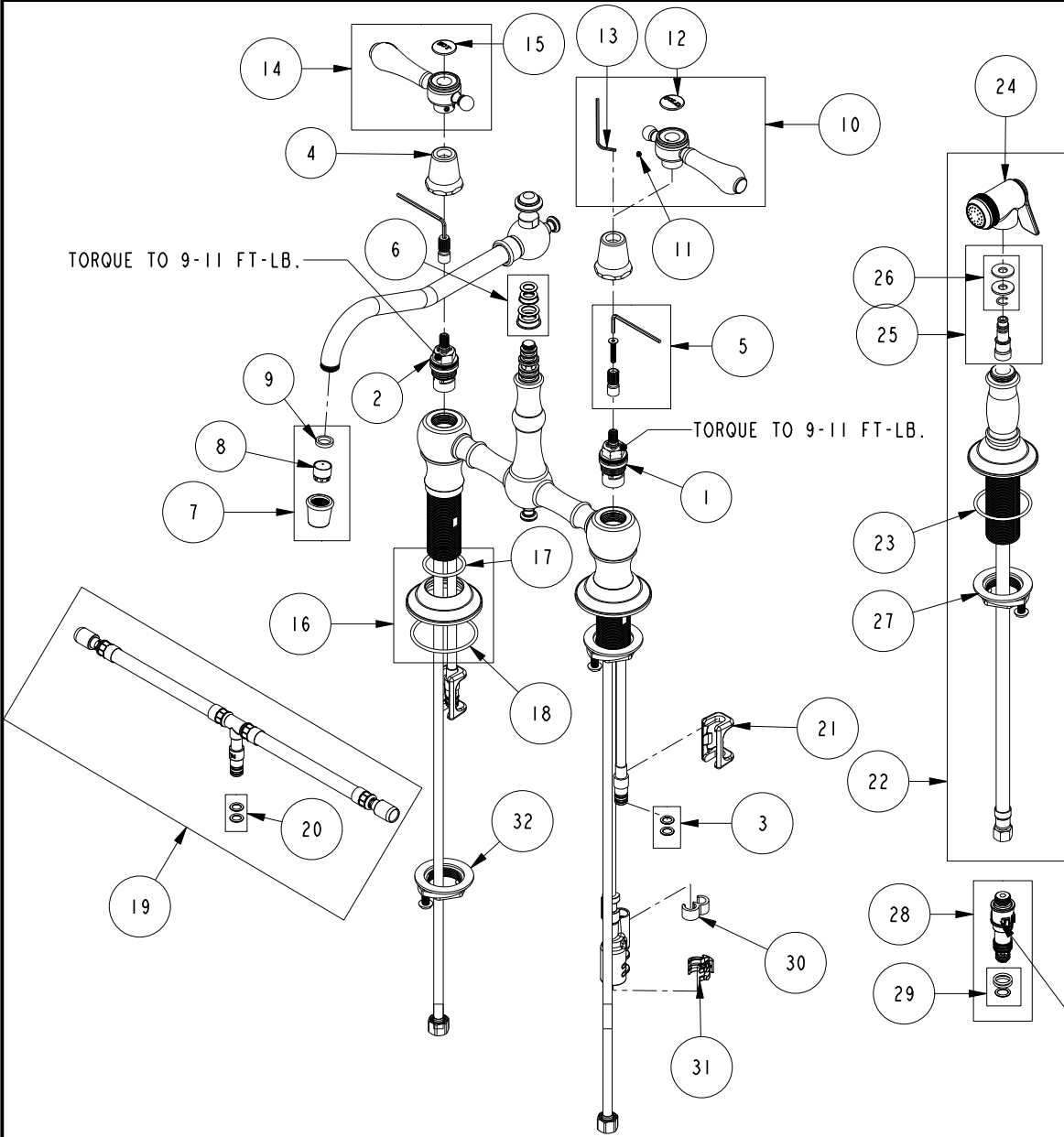


# REPLACEMENT PARTS



ITEM	PT/ASSY	SPECIFY FINISH	DESCRIPTION
1	1-005		C/S VALVE CARTRIDGE - COLD
2	1-006		C/S VALVE CARTRIDGE - HOT
3	1-399		O-RING KIT FOR SPOUT PEX CONECTION
4	13854	YES	HANDLE BONNET - TUB FILLER
5	10-304		CARTRIDGE STEM ADAPTER KIT
6	10-302		SPOUT O-RING AND WASHER KIT
7	2-259	YES	AERATOR ASM
8	11917		AERATOR INSERT TT, 1.75 GPM
9	91265		WSHR, 11 ID X 15 OD X 2.8 MM THK, FLT, RUBBER NSF 61
10	2-133	YES	HANDLE ASSEMBLY - COLD
11	92000		SCREW 8 - 32 X 1/8 SS
12	1-107		COLD BUTTON ASSEMBLY W/ ADHESIVE
13	10192		HEX KEY TOOL, #8 5/64
14	2-134	YES	HANDLE ASSEMBLY - HOT
15	1-108		HOT BUTTON ASSEMBLY W/ ADHESIVE
16	20-701	YES	ESCUTCHEON ASM.
17	91305		O-RING, #2- 124, EPDM, 65-75 DURO, NSF 61
18	91752		O-RING, #2- 137, EPDM, 50 DURO
19	1-777		TEE HOSE ASSY
20	1-399		O-RING KIT FOR SPOUT PEX CONECTION
21	91568		RETAINER CLIP
22	129	YES	KITCHEN SPRAY HEAD
23	91762		O-RING, #2-132, EP, 50 DURO - GREY
24	2-119B	YES	SPRAY HEAD ASM
25	1-778		SIDE SPRAY HOSE ASSY
26	1-397		SIDE SPRAY WASHERS
27	1-393		1-1/8 18 UNEF MOUNTING KIT
28	10-303		PEX DIVERTER ASM FOR SIDE SPRAY HOSE
29	1-398		O-RING KIT FOR SIDE SPRAY PEX DIVERTER
30	91811		TEE HOSE CLIP
31	91812		DIVERTER CLIP
32	1-393		1-1/8 18 UNEF MOUNTING KIT

KITCHEN BRIDGE FAUCET W/ SPRAY  
9462

REV J EN-4685 08/22/23 APPROVED RS

**NEWPORT BRASS.**

t: 949.417.5207 | www.newportbrass.com