

2 PC ECONOMY FULL PORT 150# FLANGED

Features:

- 150# Flanges
- Full Port
- Stainless Steel Trim
- TFM Seats
- Blowout-Proof Stem
- Anti-Static Design
- Adjustable Packing
- Silicone Free

Standards:

- Flanges: ANSI B16.5
- Face to Face: ANSI B16.10
- Mounting Pad: ISO 5211
- Text & Inspection: API 598

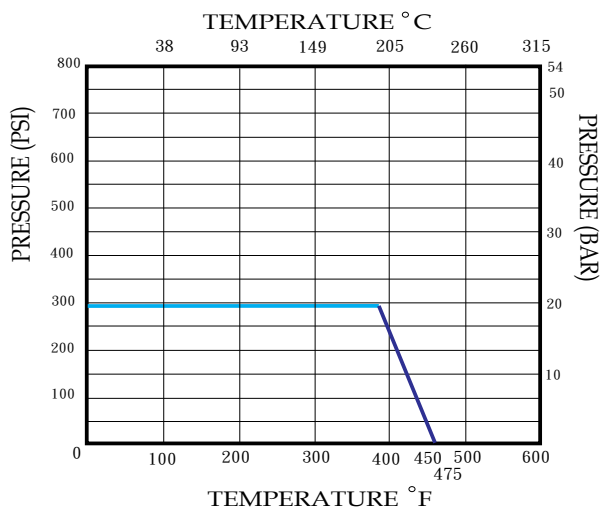


Figure Number Matrix

FNW 660A Size

SIZE CODE

2 = K 4 = P
2-1/2 = L 6 = U
3 = M



Cv & Weight

SIZE	Cv	Wt (Lbs)
2	386	18.5
2-1/2	497	29.3
3	702	36.1
4	1,402	61
6	4,600	142.2

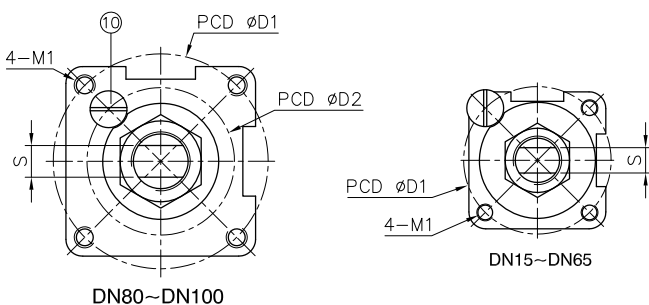
Torque

SIZE	In-Lbs
2	336.3
2-1/2	398.3
3	539.9
4	708.1
6	1681.6

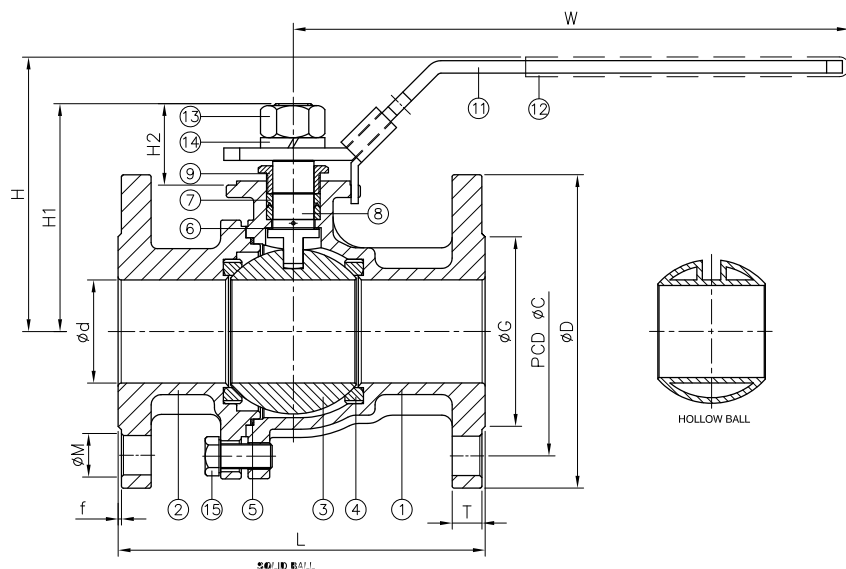
2-4"

2 PC ECONOMY FULL PORT 150# FLANGED

Standard Materials



ITEM	PARTS	MATERIAL
1	BODY	ASTM A351-CF8M
2	CAP	
3	SOLID BALL	ASTM A351-CF8M
	HOLLOW BALL	ASTM A240-316
4	BALL SEAT	TFM 1600
5	BODY SEAL	PTFE
6	THRUST WASHER	
7	PACKING	
8	STEM	ASTM A276-316
9	GLAND NUT	AISI 304
10	STOP PIN	
11	HANDLE	STAINLESS STEEL
12	HANDLE SLEEVE	PVC
13	STEM NUT	AISI 304
14	SPRING WASHER	
15	BOLT	



Dimensions

NPS	d	G	C	D	L	H	H1	H2	W	T	f	S	D1	D2	M	M1	Torque (lb-in)		Weight (lb)	
																	Breakaway	Action	SOLID	HOLLOW
2"	1.97	3.62	4.75	5.98	7.01	5.35	4.35	1.55	10.47	0.57	0.06	0.47	2.76	-	0.75	M8	336.3	265.5	18.5	-
2-1/2"	2.56	4.12	5.47	7.01	7.48	5.81	4.81	1.52	11.73	0.63	0.06	0.47	2.76	-	0.75	M8	398.3	309.8	29.3	27.3
3"	3.15	5	5.98	7.48	7.99	6.59	5.59	1.69	15.35	0.69	0.06	0.59	4.02	2.76	0.75	M10	539.9	442.5	36.1	31.6
4"	3.94	6.19	7.5	8.98	9	7.19	6.18	1.69	15.35	0.88	0.06	0.59	4.02	2.76	0.75	M10	708.1	646.1	61	53.1

DOC: FNW660A08 Ver. 9/2010

© 2010 - FNW. All rights reserved.

The FNW logo is a trademark of Ferguson Enterprises, Inc., PL Sourcing, PO Box 2778, Newport News, VA 23609

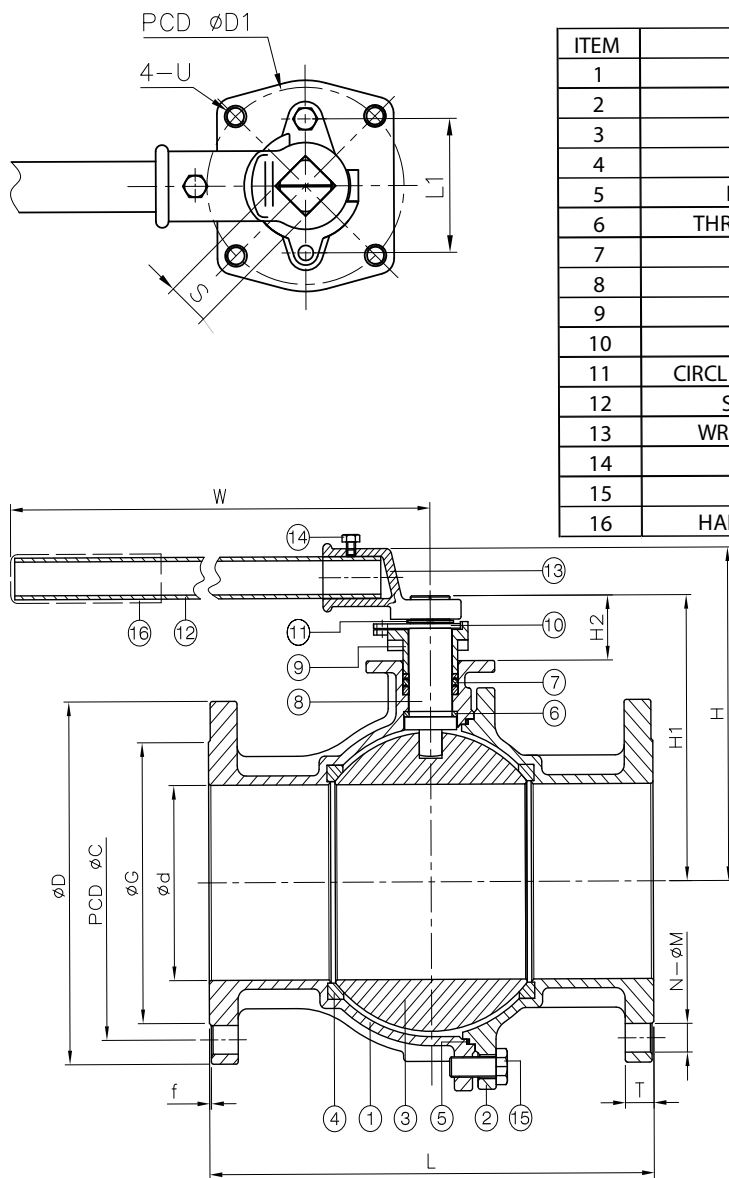
The contents of this publication are presented for information purposes only, and while effort has been made to ensure their accuracy, they are not to be construed as warranties or guarantees, expressed or implied, regarding the products or services described herein or their use or applicability. All sales are governed by our terms and conditions, which are available on request. We reserve the right to modify or improve the designs or specifications of our products at any time without notice. Always verify that you have the most recent product specifications or other documentation prior to the installation of these products.

6"

2 PC ECONOMY FULL PORT 150# FLANGED

Standard Materials

ITEM	PARTS	MATERIAL
1	BODY	ASTM A351-CF8M
2	CAP	
3	BALL	ASTM A351-CF8M
4	BALL SEAT	TFM 1600
5	BODY SEAL	PTFE
6	THRUST WASHER	
7	PACKING	ASTM A276-316
8	STEM	
9	GLAND	AISI 304
10	STOPPER	
11	CIRCLIPS FOR SHAFT	
12	STEEL TUBE	
13	WRENCH BLOCK	
14	BOLT	PVC
15	BOLT	
16	HANDLE SLEEVE	PVC



Dimensions

NPS	d	G	C	D	L	H	H1	H2	W	T	f	N	M	S	L1	D1	U	Weight (lb)
6"	5.91	8.5	9.51	10.98	15.51	10.1	8.66	1.97	29.25	1	0.06	8	0.87	1.06	3.35	4.92	M12*1.75	142.2

DOC: FNW660A08 Ver. 9/2010

© 2010 - FNW. All rights reserved.

The FNW logo is a trademark of Ferguson Enterprises, Inc., PL Sourcing, PO Box 2778, Newport News, VA 23609

The contents of this publication are presented for information purposes only, and while effort has been made to ensure their accuracy, they are not to be construed as warranties or guarantees, expressed or implied, regarding the products or services described herein or their use or applicability. All sales are governed by our terms and conditions, which are available on request. We reserve the right to modify or improve the designs or specifications of our products at any time without notice. Always verify that you have the most recent product specifications or other documentation prior to the installation of these products.