



Reusable Biohazard Carton Covers

Wide Opening for Safe, Sanitary Disposal of Biohazards, Page 331



Hot Hand® Protector

Fun Colors for Handling Hot or Cold, Page 314



Weighted Safety Shield

Because Accidents Happen, Page 321



SAFETY

PLUM Eye and Skin Wash Stations
Fast, Effective First Aid, Page 302-308

Personal Eye Wash in the Workplace

As basic first aid equipment for any work environment and a practical supplement when fixed eye wash stations are required, Personal Eye Wash products offer an inexpensive solution that can be utilized to enhance your emergency preparedness, and improve critical response time when debris or chemicals enter the eye.

Things to consider when choosing personal eye wash:







- **What types of materials are on site that could enter the eye?**

Saline which mimics human tears or water are the most common products used to flush the eyes and work well for particulate debris (i.e. dust, dirt, metal fragments, wood chips etc.) When corrosive acids or alkalis are involved, time is of the essence. While water and saline will dilute an acid or alkali, a pH Neutralizing solution can quickly neutralize the substance and return the eye to its normal pH value of 7.4. Learn more about Plum pH Neutralizer on page 303.

- **Where are workers located? What is the work environment?**

Are workers in a fixed area, moving between work areas or facilities, or outdoors? Personal Eye Wash products can be placed right where accidents are most likely to occur. Choose from wall mounting units or individual bottles and belt bags that mobile workers can conveniently keep with them at all times. For areas of high traffic or dust, Plum Covered Stations help keep supplies clean.

Bel-Art Products offers a variety of options in Personal Eye Wash. The table below will help you to determine which Bel-Art Products brands and features are best suited for your individual needs. After using Personal Eye Wash the injured person should immediately follow-up with a physician for further examination.

| Performance Level | Bel-Art Products Category | Features and Benefits | Page # |
|--|--|--|---------|
| Fill-it-Yourself; Reusable Bottles  |  Empty Eye Wash Bottles and Stations | <ul style="list-style-type: none"> • 1000 (32oz) or 500ml (16oz) bottles can be filled with eye wash solution or water; Note: Any opened bottles of eye wash solution are no longer sterile and contents generally require frequent monitoring • Rigid eye cup with weep hole for draining contaminants away from the eye. • Open stations with multi-language instructions | 309-310 |
| Prefilled Sterile Saline Solution  |  Sterile Saline Eye Wash Bottles and Stations | <ul style="list-style-type: none"> • 1000ml (32oz) bottles of sterile 0.9% saline • Twist-off cap with tamper proof wrapper • Open stations with multi-language instructions • 3 year shelf life from date of manufacture | 311 |
| Targeted Solutions Based on Contaminant  |  Sterile Filled and Sealed 0.9% Saline and pH Neutralizing Eye and Skin Washes | <ul style="list-style-type: none"> • Sterile 0.9% saline or sterile 4.9% pH neutralizing solution • Quick twist tops have a flexible, form-fitting eye cup that helps to keep the eye open during rinsing. Weep holes drain contaminants away from the eye • Unique DUO Eye Wash bottles permit rinsing both eyes simultaneously • Bottles and Stations feature universal pictograms clear understanding • Choice of open or covered stations with different bottle sizes and solutions based on work environment • Belt bags available for individual use • 3 year shelf life from date of manufacture | 302-308 |



NEW PRODUCTS!

Plum Advantage No. 1 - Instant Access Fast and Effective First Aid for Eye and Skin Injuries

In an Emergency Seconds Count; Plum is Ready



Ready to Use- Flexible, built-in eye cup holds eye open to ensure gentle and effective rinsing

Targeted Solutions for Your Workplace- Sterile Saline or pH Neutralizing Solution

- Stations can be mounted almost anywhere and are independent of a water supply. Bottles can be placed in toolboxes, first aid kits or vehicles.
- Belt bags let mobile workers be prepared at all times
- DUO Eye Wash bottles let you immediately and effectively treat both eyes at once.



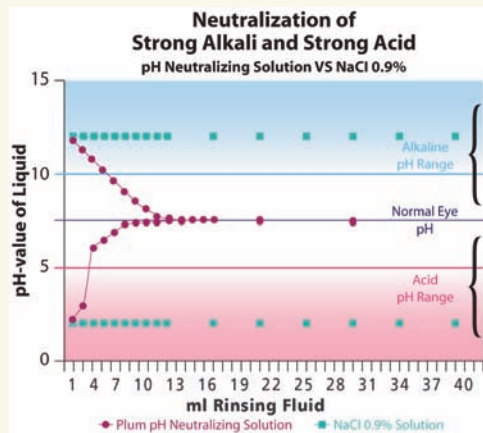
Sterile, Hygienic and FDA Registered- NDC number and expiration (3 years from date of manufacture) printed on every bottle

Plum Advantage No. 2 - pH Neutralizing Solution Eye Wash & Emergency Shower Wash Don't Just Dilute It, Neutralize It!

When acids or alkalis contact the eyes or skin, damage can begin immediately. **Plum pH Neutralizing Eye and Skin Wash** contains a 4.9% sterile phosphate buffer solution. Stations can be mounted at the workspace making them ideal for primary first aid before further rinsing at a fixed emergency station.

Documented Effect

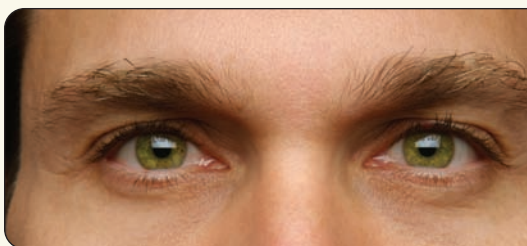
Strong acids and alkalis can penetrate the cornea in as little as 45 seconds. Rapid neutralization of the eye before cornea penetration is vitally important to reduce or prevent permanent injury. Results from an in vitro titration show that small amounts of pH Neutralizing solution rapidly neutralize the eye while 0.9% Sodium Chloride merely dilutes the liquid with minor changes in pH value. When accidents involve acids or alkalis, pH Neutralizing solution bottles provide an approximate two minute rinse and can be followed with continued rinsing at a fixed station or with Plum 0.9% Saline. Always seek additional medical attention for any injury involving the eyes.



Safety Pays - Why take unnecessary risks? Be sure your workspace has instant access to the Plum advantage. Visit <http://www.plumbelart.com> to learn more.

NEW PRODUCTS!

plum
+ Emergency Eye and Skin Washes



DUO Eye Wash Bottles

Deliver Immediate First Aid to Both Eyes at the Same Time

Accidents can and do happen to both eyes at the same time. Now you don't have to choose which eye to rinse first. PLUM Duo Eye Wash Bottles and Stations increase workplace safety and are an ideal complement to fixed stations letting you optimize the location of first aid and have the ability to treat both eyes immediately.

Each bottle releases two gentle, even streams of solution that flow from the inner eyes toward the outside to keep tear ducts free from further contamination. A unique, built-in eye piece assists in keeping the eyes open during rinsing for maximum benefit. PLUM Duo Eye Wash Bottles are available in Sterile Saline and pH Neutralizing Wash to handle all accidents involving foreign debris and chemicals that may enter the eyes.



DUO Bottle Eye Wash Stations with Sterile Saline – 1000ml

Wall-mountable stations with one or two bottles of 1000ml Duo Sterile Saline Eye Wash offer flexibility to keep eye wash right where you are most likely to need it. Open station includes one bottle and a placard with easy-to-follow pictogram instructions and polished metal mirror. Covered station which is especially suited for production areas with high dust or dirt levels has pictogram instructions on the cover

and a mirror on the inside. Bottles can be dispensed upright or inverted and feature quick twist caps for easy and immediate access to begin administering first aid. Rinse time is approximately 5 min./bottle. Mounting hardware included.

| CATALOG NO. | DESCRIPTION/DIMENSIONS (W X H) | RINSE TIME |
|-------------|--|---------------|
| F24880-8010 | DUO Open Station - 1000ml (32oz) 0.9%, Saline, one bottle 20.3 x 38.1cm (8 x 15") | 5 min./bottle |
| F24880-8502 | DUO Covered Station - 1000ml (32oz) 0.9% Saline, two bottles 30.5 x 35.6cm (12 x 14") | 5 min./bottle |



NEW PRODUCTS!

DUO Bottle Eye Wash Stations with Sterile pH Neutralizing and Sterile Saline

Wall-mountable stations with 1000ml Sterile Saline and 500ml pH Neutralizing Duo Eye Wash bottles are ideal for areas where there is risk of injuries from acids and alkalis. pH Neutralizing Wash neutralizes acids and alkalis to a harmless level in 20 seconds or less. Available in an open format or closeable box for high dirt and dust areas, each station includes easy-to-follow pictogram instructions and a polished metal mirror. Bottles can be dispensed upright or inverted and feature quick twist caps for easy and immediate access to begin administering first aid. Pictograms are also printed on the bottles. Flexible for the workplace, they easily mount to walls and other flat surfaces. Mounting hardware included. Rinse times: pH Neutralizing Wash – approximately 2 min./bottle, Saline Eye Wash – approximately 5 min./bottle.



| CATALOG NO. | DESCRIPTION/DIMENSIONS (W X H) |
|-------------|--|
| F24880-8403 | DUO Open Station - 500ml (16oz) pH Neutralizing and 1000ml (32oz) 0.9% Saline, 30.5 x 38.1cm (12 x 15") |
| F24880-8503 | DUO Covered Station - 500ml (16oz) pH Neutralizing and 1000ml (32oz) 0.9% Saline, 30.5 x 35.6cm (12 x 14") |



DUO Eye Wash Bottle Station Refills – Sterile Saline and Sterile pH Neutralizing

Unique structure delivers two gentle even streams of solution enabling both eyes to be rinsed at once. Bottles contain a sterile 0.9% sodium chloride solution (saline) for rinsing dust and debris, or a sterile 4.9% phosphate buffer (pH neutralizing) solution to quickly neutralize acids and alkalis. Each is labeled with clear instructions; twist open for quick access, and has a built-in eye piece to aid in effective rinsing of the eyes. Use to refill stations or take to

job sites as part of first aid kits. Bottles require no maintenance and have a three year shelf life from date of manufacture. **6 bottles per pack.**

| CATALOG NO. | DESCRIPTION | RINSE TIME |
|-----------------|---|---------------|
| F24880-8103 (A) | 1000ml (32oz) 0.9% Saline DUO Eye Wash | 5 min./bottle |
| F24880-8023 (B) | 500ml (16oz) pH Neutralizing DUO Eye Wash | 2 min./bottle |

NEW PRODUCTS!

**Eye Wash Station
with Sterile****pH Neutralizing and Sterile Saline**

Wall-mountable station has a 200ml Sterile pH Neutralizing bottle and a 500ml Sterile Saline Eye Wash bottle for full spectrum first aid in treating injuries from chemicals, or particulates and other debris. Each bottle has a built-in, flexible eye cup with weep holes and can be dispensed upright or inverted. The station is equipped with a polished metal mirror and pictogram use instructions. Great for laboratories, classrooms or other non-dusty locations. Mounting hardware included. Rinse times: pH Neutralizing Eye Wash approximately 2 min./bottle, Saline Eye Wash – approximately 5 min./bottle

**CATALOG NO.****DESCRIPTION/DIMENSIONS (W X H)**

F24880-4003 200ml (6.8oz) pH Neutralizing and 500ml (16oz) 0.9% Saline Eye Wash
22.9 x 30.5cm (9 x 12")

**Covered Eye Wash Station with Sterile
pH Neutralizing and Sterile Saline**

Keep eye wash bottles clean but easily accessible in high-dust areas with this covered wall mounting station. Each station contains one 200ml Sterile pH Neutralizing and one 500ml Sterile Saline Eye Wash for optimal first aid options when there is risk of eye injuries from chemicals such as acids or alkalis or debris and dirt. The front cover of the box has an instructional pictogram, and a polished metal mirror is inside. Bottles have a built-in, flexible eye cup with weep holes and can be dispensed upright or inverted. Mounting hardware included. Rinse times: pH Neutralizing Eye Wash – approximately 2 min./bottle, Saline Eye Wash – approximately 5 min./bottle

CATALOG NO.**DESCRIPTION/DIMENSIONS (W X H)**

F24880-5003 200ml (6.8oz) pH Neutralizing and 500ml (16oz) 0.9% Saline Eye Wash
22.2 x 30cm (8 7/8 x 11")

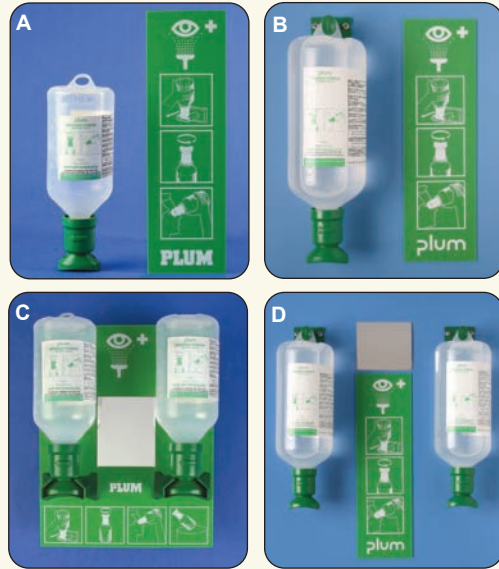
See page 303 for additional information on pH Neutralizing Solution



NEW PRODUCTS!

Open Eye Wash Stations with Sterile Saline – 500 or 1000ml

Wall-mountable stations with your choice of one or two bottles of 500ml or 1000ml Sterile Saline Eye Wash. Single stations are compact and ideal for individual work stations or mobile units while double stations are convenient for multi-use areas, laboratories and classrooms. All stations have easy-to-follow pictogram instructions, and double units include a polished metal mirror. Bottles have a built-in, flexible eye cup with weep holes and can be dispensed upright or inverted. Mounting hardware included. Rinse times: 500ml – approximately 5 min./bottle, 1000ml – approximately 10min./bottle.



| CATALOG NO. | DESCRIPTION/DIMENSIONS (W X H) | RINSE TIME |
|----------------|--|----------------|
| A. F24880-4001 | 500ml (16oz) 0.9% Saline, one bottle 17.8 x 30.5cm (7 x 12") | 5 min./bottle |
| B. F24880-4010 | 1000ml (32oz) 0.9% Saline, one bottle 20.3 x 30.5cm (8 x 12") | 10 min./bottle |
| C. F24880-4002 | 500ml (16oz) 0.9% Saline, two bottles 22.9 x 30.5cm (9 x 12") | 5 min./bottle |
| D. F24880-4012 | 1000ml (32oz) 0.9% Saline, two bottles 30.5 x 30.5cm (12 x 12") | 10 min./bottle |



Covered Eye Wash Station with Sterile Saline – 500ml

This covered, wall-mountable station has two 500ml Sterile Saline Eye Wash bottles and is especially suitable for high dust/dirt areas and mobile workplaces. The front cover of the box has an instructional pictogram, and a polished metal mirror is inside. Bottles have a built-in, flexible eye cup with weep holes and can be dispensed upright or inverted. Mounting hardware included. Rinse time: approximately 5 min./bottle.

| CATALOG NO. | DESCRIPTION/DIMENSIONS (W X H) | RINSE TIME |
|-------------|--|---------------|
| F24880-5002 | 500ml (16oz) 0.9% Sterile Saline, two bottles 22.2 x 30cm (8 7/8 x 11") | 5 min./bottle |

NEW PRODUCTS!



Eye Wash Station Refills – Sterile Saline and Sterile pH Neutralizing Solution

Bottles contain a sterile 0.9% sodium chloride solution (saline) for rinsing dust and debris, or a 4.9% sterile phosphate buffer (pH neutralizing) solution to quickly neutralize acids and alkalis. Bottles have clear instructions, twist open for quick access and have a built-in eye cup with dust cap. Use to refill eye wash stations or take to job sites as part of first aid kits. 200 ml bottles fit Plum Belt Bag F24880-5500, page 306. Bottles require no maintenance and have a three year shelf life from date of manufacture. **3 bottles per pack.**

| CATALOG NO. | DESCRIPTION | RINSE TIME |
|-------------|-------------------------------|----------------|
| F24880-0023 | 200ml (6.8oz) 0.9% Saline | 2 min./bottle |
| F24880-0053 | 500ml (16oz) 0.9% Saline | 5 min./bottle |
| F24880-0103 | 1000ml (32oz) 0.9% Saline | 10 min./bottle |
| F24880-1023 | 200ml (6.8oz) pH Neutralizing | 2 min./bottle |



Bag for 200ml Plum Bottles

Give mobile workers immediate access to first aid with this lightweight, long wearing bag. Easily attaches to belts, backpacks, coveralls etc. and holds a 200ml bottle of PLUM Sterile Saline or pH Neutralizing Eye Wash. A strong hook and loop closure holds the flap closed so bottle remains clean and in place, yet provides quick, easy access if an accident occurs. **3 per pack.**

| CATALOG NO. | DIMENSIONS (DIA. x L) |
|-------------|------------------------|
| F24880-5500 | 6.4 x 17.8cm (2½ x 7") |

Pocket-Size Emergency Eye Wash Bottle

Keep Emergency Eye Care in Your Pocket

Be prepared for immediate eye care in the field, plant, shop, home, garage or wherever you go. The 120ml (4 oz) oval polyethylene bottle has an eyecup with a tight fitting, snap-on cover. Fill and keep the bottle handy in your pocket. Instructions for use are printed on the bottle. **Per each, 24 per case.**



CATALOG NO.

F24845-0000

DESCRIPTION

120ml (4 oz) Empty Eye Wash Bottle

Eye Wash Bottle Holder

A Simple Tool for Keeping Eye Wash Bottles in Easy Reach

Flexible Vikem® vinyl pouch with stiff back panel keeps eye wash bottles in sight and within reach. Holds 500ml (16oz) F24850-0000, 1000ml (32oz) F24851-0000 eye wash bottles, or 500ml (16oz) F24880-0053, 1000ml (32oz) F24880-0103 sterile saline eye wash bottles. Two reinforced holes for hanging. Bottles sold separately.



CATALOG NO.

F24854-0000



Poxygrid® Eye Wash Bottle Wall Rack

Keep an Eye Wash Bottle Visible and Ready for Immediate Use

Fabricated of welded steel wire with corrosion-proof epoxy coating, this wall rack holds a single 1000ml (32oz) eye wash bottle in plain view for emergency use. It hangs on a screw or nail and is suitable for use with F24879-0032 sterile saline eye wash and F24851-0000 eye wash bottles (sold separately). 10.8cm diameter (4¼") x 21cm (8¼") high. **Per each, 6 per case.**

CATALOG NO.

H24859-0000



Emergency Eye Wash Safety Stations

Built-In Eye Cup Provides Immediate Emergency Care

U.S. Patent 6,540,726

This fluid delivery system features a built-in eye cup that allows the injured person to be treated in any position, whether standing, sitting, or lying down and provides effective and immediate eye irrigation. Quick instruction diagrams on the bottle and station confirm how to use the eyewash bottle, and multi-language directions are on the station (English, French, German and Spanish). Three stations are available to suit all workstations: a single or a double station with 1000ml (32 oz) eyewash bottle(s) or a single station with a 500ml (16 oz) bottle. Stations are shipped with empty bottles and can be filled with F24879-0032 Sterile Eye Wash Solution Refills (page 311). Maintenance instructions for bottles are included. Single station dimensions: 44.5W x 38cmH (17½ x 15"). Double station dimensions: 45.7W x 34.9cmH (18 x 13¾"). **Per each, 12 per case.**

| CATALOG NO. | DESCRIPTION |
|-------------|--|
| F24865-0000 | Single Station with 500ml (16 oz.) Empty Eye Wash Bottle |
| F24866-0000 | Single Station with 1000ml (32 oz.) Empty Eye Wash Bottle |
| F24868-0000 | Double Station with two 1000ml (32oz) Empty Eye Wash Bottles |
| F24850-0000 | 500ml (16 oz.) Empty Eye Wash Bottle |
| F24851-0000 | 1000ml (32 oz.) Empty Eye Wash Bottle |



Built-in Eye Cups



Works in Any Position



All Scienceware® and PLUM Emergency Eye Wash Products Serve as Immediate First Aid only. Further Examination and Treatment by a Physician are Required.

Open Eye Wash Stations with Sterile Saline

Twist off Caps

Every workplace should have an emergency eye wash station for immediate access to sight-saving eye wash solution. These safety-green eye wash stations can be wall-mounted for quick access when an emergency occurs. Bottles have a three year shelf life from date of manufacture.

A. Single Eye Wash Station

Includes one 1000ml (32 oz) bottle filled with sterile, isotonic, buffered eye wash solution, ready for immediate use. Stations provide quick instruction diagrams, multi-language instructions, and a polished metal mirror. The station is 44W x 38cmH (17½ x 15"), with four holes for mounting with screws (not included).



CATALOG NO.

F24878-1032

DESCRIPTION

One 1000ml (32oz) Bottle

B. Double Eye Wash Station

Includes two 1000ml (32 oz) bottles filled with sterile, isotonic, buffered eye wash solution, ready for immediate use. Stations provide quick instruction diagrams, multi-language instructions, and a polished metal mirror. The station is 46W x 34.9cmH (18 x 13¾") with four holes for mounting with screws (not included).



CATALOG NO.

F24878-2032

DESCRIPTION

Two 1000ml (32oz) Bottles



Sterile Saline Eye Wash Solution Refill

Don't take chances with your eyes! Keep 1000ml (32 oz) of sterile eye wash solution handy for effective relief from eye irritants. In case of emergency, twist and snap off the sealed bottle top, tilt the head back, hold the eyelid open and pour the solution into the eye. The sterile irrigating solution is helpful in rinsing away chemical contaminants and other harmful irritants and is similar in pH value to that of human tears. Each individually packaged bottle is designed for one time use to ensure sterility. Keep them on hand as instant refills for your wall-mounted eye wash stations.

CATALOG NO.

F24879-0032

DESCRIPTION

1000ml (32oz) Eye Wash Refill

SAFETY

Safety Goggles

Fits Comfortably over Prescription Glasses

Made of soft, clear, flexible vinyl that conforms to the face and nose, these goggles have 4 vents to reduce fogging. Goggles have clear polycarbonate lenses, and can be worn over regular eyeglasses with complete comfort. 13mm (½") wide adjustable elastic headband. Goggles are ANSI Standard Z87.1 compliant.

Per each, 6 per case.



CATALOG NO.

H24873-0000



Safety Eyewear Holders

Perfect for Office and Lab

Designed to be wall-mounted or free-standing, these clear acrylic eyewear holders are available with or without a lid. 22.9 x 15.2 x 9.5cm (9 x 6 x 3 3/16"). There are pre-drilled holes on the back for wall mounting. (Hardware not included)



CATALOG NO.

F24877-0000

DESCRIPTION

Holder with lid

F24877-0001

Holder without lid

Eyewear Dispenser

Keep Safety Glasses within Reach

This wall-mounted dispenser is designed to hold either boxed or loose glasses. It features a large flip-up door for removing glasses and open top for easy filling. Made from clear acrylic, you'll always know when it's time to refill. There are predrilled holes on the back for wall mounting. (Hardware not included)



CATALOG NO.

F24876-0000

DIMENSIONS (L x W x H)

20.3 x 10.2 x 48.3cm (8 x 4 x 19")



Cleanware™ Anti-Fog Lens Cleaner

Economical, Only One Drop Does the Trick

Cleans glass and plastic lenses with only one drop while providing anti-static and anti-fogging protection. Can be used on microscopes. Supplied in a convenient 59ml (2 oz) bottle with reclosable dispenser cap, the fluid can be dispensed in a single drop or stream onto lens. Fits easily in a pocket or purse. **2 per pack, 12 packs per case.** No Air Shipment.

CATALOG NO.

F24842-0001

DIMENSIONS (DIAM. x H)

3.5 x 10cm (1 3/8 x 4")

Silicon-Free Lens Cleaning Tissues

Keep a Pop-Up Dispenser on the Bench

Use to quickly and easily clean glass and plastic lenses. These high-quality, lint-free tissues do not contain silicone and won't scratch glass or plastic lenses. 150 sheets in a pop-up dispenser pack. Each sheet is 10.8 x 12.7cm (4½ x 5"). **Per pack, 10 packs per case.**



CATALOG NO.

F24841-0000

Disposable Lens Cleaning Station

All-In-One Station, Tissues and Cleaning Solution

For economy, convenience and efficiency, this self-contained, disposable station combines cleaning solution and lens tissues. Fabricated of coated paperboard, the 14 x 21 x 21cm high (5½ x 8¼ x 8¼") station has openings for wall mounting. Contains a generous supply of 600 lens tissues 13 x 20cm (5 x 8") and a 237ml (8oz) polyethylene spray pump bottle filled with non-silicone fluid that protects, polishes, anti-stats and anti-fogs lenses. **Per each, 8 per case.** No Air Shipment.



CATALOG NO.

F24835-0000

LabLens® Liquid

Lens cleaning solution in a 473ml (1 pint) polyethylene bottle with spray pump. Bottle contains a non-silicone fluid that protects, polishes, anti-stats, and anti-fogs lenses. **Per each, 12 per case.** No air shipment.



CATALOG NO.

F24833-0000

Draft Checker™ Air Flow Detection Powder

Ideal Fume Hood Accessory

A quick and easy way to test the safety of fume hood exhaust before use. Just a squeeze or two from the plastic bottle dispenses a cloud of ultra-fine, lightweight silica powder, which remains suspended long enough to visually check whether or not the fume hood exhaust is functioning properly. It is also useful for detecting drafts, gas leaks and air currents in rooms, ducts and exhaust systems. The amorphous silica powder is inert, non-toxic and non-flammable. 1.5 gm bottle.

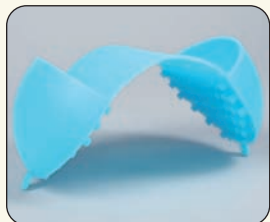


CATALOG NO.

F19939-0000

NEW COLORS!

The Original Hot Hand® Protector

*Safe, Non-Slip Grip*

Hot Hand® Mitts provide superior protection when handling hot or cold objects, including dry ice. Made of strong silicone rubber which resists tearing, it withstands temperatures as high as 260°C (500°F) and remains flexible at temperatures as low as -57°C (-70°F). Thumb and fingers fit into each pocket. The gripping surfaces have concave tipped studs for a non-slip grip, 10 x 19cm (3¾ x 7½"). **Per each, 24 per case.**

CATALOG NO.

COLOR

F38000-0000

Original Red

F38000-0001

Sky Blue

F38000-0002

Lime Green

**Fire Blanket***Smothers Small Fires, Quickly!*

Extinguishes small class "A", light oil and grease fires without the mess of foam or chemical agents. An excellent supplement to existing safety equipment, the Fire Blanket is packaged in an instant access container that can be hung on the wall or stored in any accessible location. It is made of woven fiberglass with a textured surface and all edges are serged with fireproof Kevlar® thread. The close weave greatly reduces the amount of atmospheric oxygen available to feed the fire. May also be wrapped around the head and body for protection against flames and embers when fleeing a burning room, or for protection from splashing molten metal.

CATALOG NO.

DIMENSIONS

H24869-0000

.91 x 1M (36 x 40") .9mm thick

Bright Orange Color Makes Gloves Easy to Locate



Biohazard Autoclave Gloves – Clavies®

Safely Unload Your Autoclave

Soft, pliant, all-cotton terry cloth gloves are superb for handling hot objects out of the autoclave or oven, or for other heat protection in the lab, school or industry. Heat-resistant up to 232°C (450°F), they replace hazardous asbestos gloves. Gauntlets in two lengths provide wrist and forearm protection, and the bright orange color offers high visibility. Machine wash, air dry, or use the Lab-Aire® II Glove Holder (F18931-0000) to dry on any Lab-Aire® dryer. *Note: Gloves are not waterproof and should not be used to handle dry ice. Per pair, 12 pair per case.*



| CATALOG NO. | GAUNTLET LENGTH | OVERALL LENGTH |
|-------------|-----------------|----------------|
| H13201-0000 | 13cm (5") | 33cm (13") |
| H13201-0001 | 28cm (11") | 47cm (18.5") |



Portable Glove Box System

Economical; Quickly Sets Up Anywhere

The operator and the ambient environment are protected with this lightweight, self-contained portable isolation cabinet. A large acrylic window with 6" glove ports permits safe viewing of operations, and the 8" diameter side port allows easy insertion of material and equipment. Large size, 22" long (20" installed) neoprene gloves are included and provide good protection against gas, liquid or solid penetration and are secured to the glove box with clamping rings

(included). Body molded from LDPE with round corners throughout for easy cleaning. Overall dimensions: 68.5W x 33D x 55cmH (27 x 13 X 22"). Shipping weight: 17.2kg (38lbs.)



| CATALOG NO. | DESCRIPTION |
|-------------|---|
| H50028-2000 | Ready to Use Glove Box System, with 1 pair of gloves and 2 clamping rings |
| H50028-0000 | Glove Box Only |
| H50029-0000 | Replacement Neoprene Gloves for 6" glove ports, (size large) |
| H50029-0200 | Replacement Clamping Rings, 6" |

SAFETY



Poxygrid® Glove Dispenser Racks

Epoxy-coated Glove Dispenser Wire Racks

Keep disposable gloves handy with these welded steel wire racks. Select rack to hold one, two or three boxes of disposable gloves, wipes or tissues. Each box drops into an individual retaining compartment and lifts out easily for replacement. Retaining compartment internal dimensions are 12.7cm W x 9.5cm D (5 W x 3¾" D). All models are designed for mounting to a vertical surface. Durable, blue epoxy coated racks are steam autoclavable at 121°C (250°F).

| CATALOG NO. | DESCRIPTION (L X W X H) |
|-------------|--|
| F24739-0001 | Single Box Holder 14 x 10.8 x 21cm (5½ x 4¼ x 8¼") |
| F24739-0002 | Double Box Holder 30.5 x 10.8 x 21cm (12 x 4¼ x 8¼") |
| F24739-0003 | Triple Box Holder 43.2 x 10.8 x 21cm (17½ x 4¼ x 8¼") |



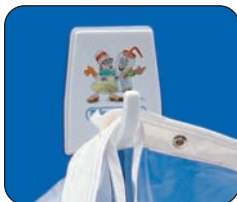
Glove Dispensers

Conveniently Mounts for Easy Glove Access

Acrylic dispenser easily mounts to wall using supplied double stick tape or through pre-drilled screw holes in back (Hardware not included). Accepts most boxed gloves or can be filled with loose or individually packaged gloves. Dimensions are 28.3 x 16.8 x 10.2cm D (11½ x 6½ x 4"D).



| CATALOG NO. | COLOR |
|-------------|-------|
| F24738-0000 | Smoke |
| F24738-0001 | Clear |



Lab Coat/Apron Hook

This hook is perfect for hanging lab coats, aprons or other clothing. Adhesive backing included for instant mounting on any wall or door. **3 per bag, 6 bags per case.**

| CATALOG NO. |
|-------------|
| F24601-0000 |

Vikem® Vinyl Aprons

Lightweight and Comfortable

Made from 4 mil thick vinyl film, these aprons have a stitched cotton binding securing all edges. Strong tie backs are double reinforced with metal grommets through three layers of material at the waist. Non-absorbent and chemically resistant, these aprons give excellent protection to personnel in hospitals, schools, laboratories and industrial plants. Yearly contracts on larger quantities at special discount prices are available. Beta blocking aprons available; see page 322.



| CATALOG NO. | COLOR | LENGTH X WIDTH |
|-------------|-------------|-----------------------|
| H24603-0001 | Translucent | 91 x 69cm (36 x 27") |
| H24604-0001 | Translucent | 107 x 91cm (42 x 36") |

HPLC Reservoir Secondary Containers

Protect Expensive HPLC Solvent Reservoirs.

Safeguard expensive HPLC solvent reservoirs against damage or breakage while in use or during storage with these durable polyethylene HPLC Reservoir Secondary Containers. These containers are resistant to most chemicals and are available in 5L, 10L and 20L sizes to accommodate popular HPLC solvent reservoirs. In addition to protecting the HPLC reservoirs, the containers serve as secondary containment to prevent solvent spills in the work area. The large, unobstructed opening allows easy viewing of the HPLC reservoir, and the round shape of the containers minimizes wasted space on the benchtop.



NEW PRODUCT!



| CATALOG NO. | CAPACITY |
|-------------|----------------|
| F16956-0001 | 5L (1.32gal.) |
| F16956-0002 | 10L (2.64gal.) |
| F16956-0003 | 20L (5.28gal.) |



Spill Containment Tray

Protect Laboratory Benches

The polystyrene tray accepts F24675-0020 Labmat™ Sheets as liners (not included) to absorb spilled liquids. The tray is 12.7mm (½") deep with an external flange.


CATALOG NO.

F24675-0050

DIMENSIONS (L x W)

58 x 69cm (23 x 27")

Spill Containment Trays

Reduce Injury and Damage from Accidental Spills

Capturing hazardous chemical and contaminant spills when transferring from one vessel to another is easy with these portable spill containment trays. The large tray (B) has a spill surface that will support multiple flasks, beakers or a rack of test tubes, while the smaller tray (A) is ideal for smaller vessels and tight spaces. Trays can also

be used for storing hazardous, corrosive chemicals, stains, etc. to protect benchtops, shelves and cabinets. Made of polypropylene for chemical resistance, durability and steam autoclavable at 121°C (250°F). **Per each, 12 per case.**


CATALOG NO.

H18905-0001 (A)

VOLUME

0.5 liter (17oz)

OUTSIDE DIMENSIONS (L x W x H)

25.4 x 13.3 x 7.3cm (9¼ x 5¼ x 2⅞")

F18905-0050 (B)

1.5 liter (50oz)

32 x 20 x 15cm (12¼ x 7¾ x 5⅝")



Spill Containment Tray with Grid

Large Volume Benchtop Spill Protection

This large, deep, polypropylene tray protects users by capturing accidental hazardous spills. The epoxy coated wire support grid holds numerous vessels or racks of test tubes. Both are steam autoclavable at 121°C (250°F) and have outstanding chemical resistance.


CATALOG NO.

F24676-0003

VOLUME

7.0 liter (200oz)

DIMENSIONS (L x W x H)

 30.5 x 24.8 x 11.4cm
(14¾ x 12½ x 4¾")



Labmat™ Rolls & Sheets

White or Biohazard Safety Orange

Disposable Labmat™ Bench Liner speeds clean-up and

safeguards work surfaces from stains, spills and wear. The highly absorbent upper surface traps up to 420ml/m² of water, dyes, corrosive chemicals or radioactive solutions. The flexible polyethylene film backing is non-skid and prevents soak-through of most solutions. Simply roll up and discard after contamination. Labmat™ Liner is 50.8cm (20") wide and 15.2 meter (50 ft.) rolls, or 50.8 x 61cm (20 x 24") pre-cut sheets. For the rolls, the desired footage is easily cut with scissors while roll is retained in dispenser. **50ft. roll (in dispenser cartons), 6 rolls per case or 100 sheets per box.**

CATALOG NO.

DESCRIPTION

| | |
|-------------|---|
| F24675-0000 | White 50 ft. roll |
| F24675-1000 | Safety Orange for biohazard designated use. 50 ft. roll |
| F24675-0020 | 100 Cut Sheets, (White), 50.8 x 61cm (20 x 24") |

Mercury Collector

Capture and Contain All Spilled Beads

To collect spilled mercury quickly, unscrew the lid with the foam pad, and press pad firmly onto the spill. This pressure forces the mercury into the pad. When the lid is screwed back onto the jar, the pad is compressed against the jar's free-standing perforated plate, releasing the mercury into the jar bottom. Container holds 125ml of mercury. Use recommended disposal method. Replacement pads should be affixed with rubber cement. Dimensions: 10.5 x 4.8cm O.D. (4½ x 2") high. **Per each, 12 per case. Replacement pads: 12 per pack, 6 packs per case.**



CATALOG NO.

DESCRIPTION

| | |
|-------------|-----------------------|
| F36250-0000 | Mercury Collector |
| F36251-0000 | Replacement Pads (12) |

Safety Step Stool

Rolls into Place, Stabilizes When You Stand on It

This handy step stool provides safe, easy access to high shelves, drawers, equipment and other hard-to-reach areas. Three (3) spring-loaded, swiveling casters make it easy to kick or push out of the way or into position. When weight is placed on the stool a non-skid vinyl bumper rests directly on the floor to prevent movement. Base diameter is 39cm (15½"), height 30cm (12"). **Per each, 6 per case.**



CATALOG NO.

F24900-0000

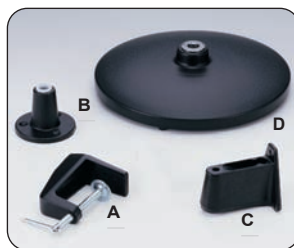
SAFETY



Single Shield: Pictured with (D) Weighted Base



Double Shield: Pictured with "C" Clamps (A)



Mounting Fixtures (Sold Separately)

Splash Shields

Protects User with Smooth, Easy Position Adjustment

No matter how your workspace is configured, these Plexiglas® Splash Shields are designed to provide safety plus comfort (not hot and stuffy like personal face shields), flexibility (they're fully adjustable), and quality in a design that will adapt to your specific needs. All shields move side-to-side as well as up and down at the touch of a finger. Free precious work space and enhance the performance of every user. After selecting desired shield, order appropriate mounting fixtures.

| CATALOG NO. | DESCRIPTION | RECOMMENDED MOUNTING FIXTURES |
|-------------|--|---|
| F24966-0001 | Single Plexiglas® Splash Shield 305 x 381mm (12 x 15") with 61cm (24") Reticulating Arm | Select type A, B, C or D |
| F24966-0002 | Single Plexiglas® Splash Shield 30.5 x 38.1cm (12 x 15") for Island Benches with 96.5cm (38") Reticulating Arm | Select type A, B, or C |
| F24966-0004 | Double Plexiglas® Splash Shield 38.1 x 61cm (15 x 24") with two 61cm (24") Reticulating Arms (one for each arm). | Select type A, B, or C Must order two of same. |
| F24966-0003 | Double Plexiglas® Splash Shield 38.1 x 61cm (15 x 24") for Island Benches with two 96.5cm (38") Reticulating Arms. | Select type A, B, or C Must order two of same. |

Mounting Fixtures: (Refer to recommended mounting fixtures above. Choose the best mounting system for your work area.)

| CATALOG NO. | DESCRIPTION |
|--------------------------------------|---|
| F24966-0005 | (A) "C" Clamp: Opens to 63mm (2½"), Order two for use with double shields |
| F24966-0006 | (B) Fixed Table Bracket: Attaches permanently with screws to bench top. Order two for use with double shields. |
| F24966-0007 | (C) Wall Bracket: Attaches permanently to vertical surface with screws. Mount to wall studs only. Order two for use with double shields. |
| F24966-0008 | (D) Weighted Base: 24.1cm (9½") Diameter Base. For use only with Single Splash Shield F24966-0001 |
| REPLACEMENT PLEXIGLAS® SHIELD | |
| F24966-0010 | Pre-Drilled Single Shield (fits F24966-0001/0002) |
| F24966-0011 | Pre-Drilled Double Shield (fits F24966-0003/0004) |

Polycarbonate shields are available to convert your splash shield into a safety shield, please call 1-800-4BEL-ART for details



Large Weighted Safety Shields

Highest Impact Resistance of All Transparent Shield Materials

Laboratory workers are protected by a 4.7mm ($\frac{3}{16}$ ") thick clear polycarbonate barrier. Stable three-sided construction provides front and side protection against flying debris. The heavy steel perimeter base is coated with blue epoxy. Plated steel bolts, nuts and washers are used for assembly. Outside base width is 50cm (19 $\frac{1}{2}$ ") and 17cm (6 $\frac{1}{2}$ ") front to back.



| CATALOG NO. | HEIGHT | WEIGHT |
|-------------|------------|----------------|
| H24962-0000 | 76cm (30") | 8.4kg (18.5lb) |
| H24964-0000 | 91cm (36") | 8.9kg (19.6lb) |

Custom Safety Shields Made to Order, Call 1-800-4BEL-ART

Splash Shield

Splash Protection in Standing or Sitting Position

Provides excellent splash protection from pipetting or pouring procedures. An extra wide, angled viewing area and low bend allow the shield to be used from a standing or sitting position. Made from 6.4mm ($\frac{1}{4}$ ") clear acrylic with non-skid feet for stability. Acrylic base work area is 50.8 x 30.5cm (20 x 12") deep. Face is 50.9 x 38cm (20 x 15") high. Not recommended for Beta use.



| CATALOG NO. |
|-------------|
| F24965-0000 |

Protect Yourself from Beta Radiation with These Safety Products



Beta Shields

Free Standing Workshields in 3 Sizes

Beta shields reduce the exposure from radioactive isotopes and offer excellent clarity. The shields are made from 9.5mm ($\frac{3}{8}$ ") clear acrylic with non-skid feet. All three sizes feature an angled shield and flat base with large work surface.



| CATALOG NO. | DIMENSIONS (L x W x H) |
|-------------|---|
| F24976-0001 | 20.3 x 30.5 x 37.5cm (8 x 12 x 14 $\frac{1}{4}$ ") |
| F24976-0002 | 30.5 x 35.6 x 52.7cm (12 x 14 x 20 $\frac{3}{4}$ ") |
| F24976-0003 | 31.4 x 40.6 x 52.1cm (12 $\frac{3}{8}$ x 16 x 20 $\frac{1}{2}$ ") |

Beta Splash Shield

Beta and Splash Protection in One Unit

The Beta Splash Shield is made from 9.5mm (3/8") clear acrylic for protection from Beta emitters and splashes from lab procedures. The shield provides a large viewing area and flat work surface.



CATALOG NO.

DIMENSIONS (L X W X H)

F24975-0000

50.8 x 30 x 50.8cm (20 x 12 x 20")



Coated Lead Shield

Provides Protection from Radiation and Debris

This 6.4mm (1/4") thick lead shield safeguards against chemical reactions, low level radiation, and flying debris. The lead shield is coated with vinyl for a soft, smooth surface that prevents the hazard of skin contact with lead. Weight 3.6 kg (8lbs). Other sizes made to order.



CATALOG NO.

DIMENSIONS (L X W X H)

H24958-0000

22 x 8 x 15cm (8½ x 3 x 6")

Beta Blocking Apron

For Added Personal Safety

This 3.2mm (1/8") thick black, neoprene rubber apron helps block beta radiation, protects against hazardous chemicals, and shields >97% of Phosphorous-32 and other Beta emitting sources. Two over-shoulder straps distribute the weight evenly on the shoulders rather than straining the neck. The apron is 51cm (21") wide, 82cm (32 1/4") long, weighs 1.5kg (3.35lbs.), and is designed to augment other radiation shielding devices. One size fits all. Regular protective vinyl aprons also available; see page 317.



CATALOG NO.

F24602-0000



Microcentrifuge Box

Beta Radiation-Blocking Box

Storage box is made from 9.5mm acrylic with tight-fitting joints to assure maximum protection from radioactive isotopes. There is room under the rack for water or crushed ice. Holds 36 tubes.



CATALOG NO.

TUBE SIZE

DIMENSIONS (L X W X H)

F24980-0015

1.5ml

20 x 9 x 6cm (8½ x 3½ x 2¼")

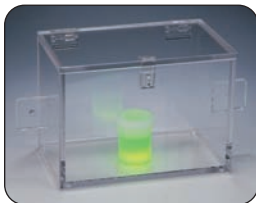
Lead Lined Polyethylene Storage Boxes

Safeguard Personnel from Exposure to Radiation or Lead

This storage system is excellent for storing vials of isotopes, contaminated instruments and tools, radioactive samples, solutions, or waste. A 0.76mm (0.030") thick lead shield encased in 6.4mm (¼") thick high-density polyethylene helps contain radiation without lead exposure. Each box has a cover of the same lead/polyethylene construction with a 32mm (1¼") external overlap designed to prevent radiation escape. The handle opening is 89 x 29mm (3½ x 1⅛").



| CATALOG NO. | DIMENSIONS (L X W X H) |
|-------------|--------------------------------|
| F24960-0000 | 13 x 36 x 13cm (5 x 14 x 5") |
| F24960-0001 | 15 x 15 x 20cm (6 x 6 x 8") |
| F24960-0002 | 20 x 30 x 20cm (8 x 12 x 8") |
| F24960-0003 | 25 x 25 x 25cm (10 x 10 x 10") |



Beta-Safe™ Storage Box

Complies with Security Regulations

Fabricated from 9.5mm (¾") clear acrylic for all around visibility of stored contents, this box stores radioactive materials such as P-32, S-35 and C-14. A hinged lid with a hasp is provided for locking. The entire unit may be secured by utilizing a locking ¼" cable through the anti-theft connectors which are securely attached to the box. The standard unit measures a generous 25.4 x 15.24 x 17.8cmH (10 x 6 x 7H") I.D. Other sizes available on special order. Complies with USNRC Rules and Regulations, Title 10, Chapter 1, Part 20. Lock and cable or chain not included.



| CATALOG NO. | DIMENSIONS (L X W X H) |
|-------------|-------------------------------------|
| F24987-0000 | 25.4 x 15.24 x 17.8cm (10 x 6 x 7") |

Micro Tube Beta Shield

Solid Block with Cover Prevents the Escape of Beta Radiation.

This solid shield is a clear-acrylic block with 13 wells (11mm diameter) that hold 1.5ml micro sample tubes, F19929-0000 or similar, in individual cells. A clear, tight-fitting cover allows space for micro tube flip tops and blocks Beta radiation including P-32, S-35 and C-14. In addition, the shield provides an excellent method of sample transport and saves valuable bench space. Tubes not included.



| CATALOG NO. | DIMENSIONS (L X W X H) |
|-------------|------------------------------------|
| F24980-0001 | 5.2 x 10.5 x 6.2cm (2⅙ x 4⅙ x 2⅙") |

SAFETY

Beta Box

With Removable Lid

This Beta box is made from 9.5mm ($\frac{3}{8}$ ") clear acrylic with tight-fitting joints that reduce exposure to radioactive isotopes. With excellent visibility of contents, a removable lid, and non-skid feet, the box is 22.9 x 15.2 x 17.8 cm H (9 x 6 x 7"H).



CATALOG NO.

F24983-0000



Beta Box

Clips Hold Disposable Bag

Made from clear 9.5mm ($\frac{3}{8}$ ") acrylic for protection from radioactive isotopes, this Beta Box has a removable lid, non-skid feet and clips to hold a disposal bag in place. Inside dimensions are 30.5 x 15.2 x 38.0 cm H (12 x 8 x 15"H).



CATALOG NO.

F24984-0000

Radiation Dots

Radioactive Indicator Stickers

Stick-on dots adhere to plastics and glass to identify "hot" labware. Each dot is 6.35mm ($\frac{1}{4}$ ") in diameter with the radiation symbol on a yellow background. Color coding complies with OSHA regulations. **Tape roll of 1000 dots, 12 rolls per case.**



CATALOG NO.

F13359-0000



Safety Waste Jug

Easy Filling, Traps Fumes In

Features a screw-on funnel top with 12cm ($4\frac{3}{4}$ ") diameter and is perfect for safe handling and temporary storage of spent solvents or other liquid wastes. A snap-on cap seals the funnel top to retain fumes. This high-density polyethylene jug is translucent for observing content level and includes a screw-top to seal container for safe transit. Graduated in US gallons, 22 liter (5.5gal) capacity. Neck opening is 33.4mm (1.3").



CATALOG NO.

H11919-0000

DIMENSIONS (L x W x H)

24.9 x 25.6 x 37.9cm ($9\frac{7}{16}$ x $10\frac{1}{16}$ x $14\frac{15}{16}$ "

Beta Boxes for Wet Waste

Added Protection for Transfer and Storage of Wet Waste

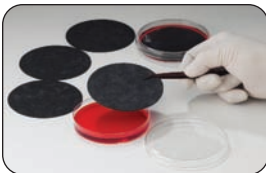
These boxes are made of 9.5mm ($\frac{3}{8}$ " thick clear acrylic for protection against Beta radiation from wet waste. The removable tops are set into the box to avoid any straight-line path for radiation. The tops have a grip knob for easy removal.

Available in two models, the Beta Box Open model holds a standard 1 liter (1.05 quart) bottle, and the removable top has a 19.7mm ($\frac{3}{4}$ ") hole in the center to insert a funnel for easy pouring. (No cover for funnel hole.) Inside dimensions are 16.5 x16.5 x 30.5cm H ($6\frac{1}{2}$ x $6\frac{1}{2}$ x 12"). Bottle and funnel not included.

The Beta Box Closed model (not shown) has no hole in the removable top, and contents are totally enclosed. The 1 liter (1.05 quart) bottle fits inside, as well as a funnel which rests on top of the bottle. Inside dimensions are 16.5 x16.5 x 47.6cm H ($6\frac{1}{2}$ x $6\frac{1}{2}$ x 18 $\frac{3}{4}$ "). Bottle and funnel not included.



| CATALOG NO. | DESCRIPTION |
|-------------|---|
| F24990-0000 | Open Beta Box with 19.7mm ($\frac{3}{4}$ ") hole |
| F24990-0001 | Closed Beta Box - without hole (not shown) |



Charcoal Disks

Efficiently Capture Volatile S-35 Radioactive Component During Labeling

Activated charcoal impregnated into each Disposable Charcoal Disk absorbs most of the volatile S-35 radioactive component before it can escape from the Petri dish during metabolic labeling.

The sterilized disk is placed inside the lid of the 100mm Petri dish used for labeling. After use, disks are disposed of in regular beta waste containers. For a dynamic duo combine the Charcoal Disks with Charcoal Cartridges, F24989 (below), which are placed on the incubator shelves to trap the volatile S-35 radioactive component that may have escaped from Petri dishes equipped with Charcoal Disks. **50 per box.**

| CATALOG NO. |
|-------------|
| F13557-0000 |

Disposable Charcoal Cartridge

Safely Absorb the Volatile S-35 Radioactive Component During Labeling

These disposable, activated charcoal cartridges efficiently absorb S-35 radioactive component released from S-35 labeled amino acids. Capturing the released radioactivity lessens the chance of breathing the volatile component and reduces contamination of the incubator and the water in the humidity pan. Place cartridges on the incubator shelf and, after use, dispose in regular beta waste containers. Cartridges are sealed with a highly porous durable membrane. For increased safety, combine with Sterile Activated Charcoal Disks F13557 (above), which fit directly inside the lid of a 100mm Petri dish, to trap the S-35 volatile radioactive component within the Petri dish. **3 per bag.**



| CATALOG NO. |
|-------------|
| F24989-0000 |

NEW PRODUCT!



4-Color Wash Bottles – Right-to-Know, Safety-Labeled, Wide-Mouth

Right-to-Know Safety-Labeled Wash Bottles feature a wide mouth 53mm (2") for easy refilling. Bottles are pre-printed with the Chemical name and formula, the National Fire Protection Association (NFPA) Section 704 Four-color Diamond, health hazards, Chemical Abstract System (CAS) number, and suggested protective clothing and equipment. Leak-proof, these translucent* LDPE bottles have color-coded polypropylene closures to aid in quick and easy identification. **500ml - 4/bag, 6 bags/case † 1000ml - 4/bag, 3 bags/case.**

*Note: Sodium Hypochlorite bottle is white LDPE for light-protection between 230 and 450nm. Toluene is red LDPE bottle.



| CATALOG NO. | LABEL | CAP COLOR | CAPACITY |
|--------------|------------------------------|-----------|---------------|
| F11716-0050 | Assortment (6 pc) † | | 500ml (16oz) |
| F11716-0001 | Acetone | Red | 500ml (16oz) |
| F11716-0002 | Dichloromethane | Yellow | 500ml (16oz) |
| F11716-0003 | Deionized Water | Blue | 500ml (16oz) |
| F11716-0004 | Distilled Water | Blue | 500ml (16oz) |
| F11716-0019 | Ethanol | Natural | 500ml (16oz) |
| F11716-0020 | 70% Ethanol | Green | 500ml (16oz) |
| F11716-0007 | Ethyl Acetate | Green | 500ml (16oz) |
| F11716-0008 | Isopropanol | Yellow | 500ml (16oz) |
| F11716-0009* | LYOB (Label Your Own Bottle) | Natural | 500ml (16oz) |
| F11716-0010 | Machine Oil | Natural | 500ml (16oz) |
| F11716-0011 | Methanol | Green | 500ml (16oz) |
| F11716-0012 | Methyl Ethyl Ketone (MEK) | Green | 500ml (16oz) |
| F11716-0013 | Saline Solution | Natural | 500ml (16oz) |
| F11716-0014 | Soap | Blue | 500ml (16oz) |
| F11716-0015 | Sodium Hypochlorite (Bleach) | Yellow | 500ml (16oz) |
| F11716-0016 | Toluene | Red | 500ml (16oz) |
| F11716-0017 | Water | Blue | 500ml (16oz) |
| F11732-0001 | Acetone | Red | 1000ml (32oz) |
| F11732-0004 | Distilled Water | Blue | 1000ml (32oz) |
| F11732-0019 | Ethanol | Natural | 1000ml (32oz) |
| F11732-0008 | Isopropanol | Yellow | 1000ml (32oz) |
| F11732-0009* | LYOB (Label Your Own Bottle) | Natural | 1000ml (32oz) |
| F11732-0011 | Methanol | Green | 1000ml (32oz) |
| F11732-0015 | Sodium Hypochlorite (Bleach) | Yellow | 1000ml (32oz) |

† Assortment is 6 pcs., 4 assortments per case. Includes one each: Acetone, Bleach, Distilled Water, Ethanol, Isopropanol, and LYOB. *Note: Use LYOB only with solvents compatible with LDPE.

NEW PRODUCT!



Safety vent eliminates dangerous drips! Vents can be dispensed upright or inverted.



4-Color Wash Bottles – Right-to-Know, Safety-Vented™ and Safety Labeled, Wide-Mouth

Same great features as the RTK Safety-Labeled Wash Bottles, with the addition of our unique valve that prevents pressure build-up inside the bottle, eliminating dangerous chemical drips. This valve allows dispensing of wash bottle in an upright or inverted position. These RTK bottles are pre-printed with the Chemical name and formula, the National Fire Protection Association (NFPA) Section 704 Four-color Diamond, health hazards, Chemical Abstract System (CAS) number, and suggested protective clothing and equipment. **250 & 500ml - 4/bag, 6 bags/case † 1000ml - 2/bag, 6 bags/case.**

*Note: Sodium Hypochlorite bottle is white LDPE for light-protection between 230 and 450nm. Toluene is red LDPE bottle.



| CATALOG NO. | LABEL | CAP COLOR | CAPACITY |
|--------------|------------------------------|-----------|---------------|
| F11808-0050 | Assortment (6 pc) † | | 250ml (8oz) |
| F11808-0001 | Acetone | Red | 250ml (8oz) |
| F11808-0004 | Distilled Water | Blue | 250ml (8oz) |
| F11808-0019 | Ethanol | Natural | 250ml (8oz) |
| F11808-0008 | Isopropanol | Yellow | 250ml (8oz) |
| F11808-0009* | LYOB (Label Your Own Bottle) | Natural | 250ml (8oz) |
| F11808-0011 | Methanol | Green | 250ml (8oz) |
| F11808-0015 | Sodium Hypochlorite (Bleach) | Yellow | 250ml (8oz) |
| F11816-0050 | Assortment (6 pc) † | | 500ml (16oz) |
| F11816-0001 | Acetone | Red | 500ml (16oz) |
| F11816-0004 | Distilled Water | Blue | 500ml (16oz) |
| F11816-0019 | Ethanol | Natural | 500ml (16oz) |
| F11816-0007 | Ethyl Acetate | Green | 500ml (16oz) |
| F11816-0008 | Isopropanol | Yellow | 500ml (16oz) |
| F11816-0009* | LYOB (Label Your Own Bottle) | Natural | 500ml (16oz) |
| F11816-0011 | Methanol | Green | 500ml (16oz) |
| F11816-0012 | Methyl Ethyl Ketone (MEK) | Green | 500ml (16oz) |
| F11816-0015 | Sodium Hypochlorite (Bleach) | Yellow | 500ml (16oz) |
| F11832-0001 | Acetone | Red | 1000ml (32oz) |
| F11832-0004 | Distilled Water | Blue | 1000ml (32oz) |
| F11832-0019 | Ethanol | Natural | 1000ml (32oz) |
| F11832-0008 | Isopropanol | Yellow | 1000ml (32oz) |
| F11832-0009* | LYOB (Label Your Own Bottle) | Natural | 1000ml (32oz) |
| F11832-0011 | Methanol | Green | 1000ml (32oz) |
| F11832-0012 | Methyl Ethyl Ketone (MEK) | Green | 1000ml (32oz) |
| F11832-0015 | Sodium Hypochlorite (Bleach) | Yellow | 1000ml (32oz) |

† Assortment is 6 pcs., 4 assortments per case. Includes one each: Acetone, Bleach, Distilled Water, Ethanol, Isopropanol, and LYOB. *Note: Use LYOB only with solvents compatible with LDPE.

Touch Free™ Automatic Waste Cans

Automatically Opens and Closes, without a Touch!

Easy and Sanitary Waste Disposal!



D A C B

1. Wave your hand over the sensor on the front of the waste can lid.
2. When the lid automatically opens, dispose of your waste, and the lid automatically closes.

It's That Simple!

The Touch Free™ Automatic Waste Can's motion-sensitive lid opens automatically to accept waste, and then closes into a fitted well that helps to reduce odor and airborne contamination. Durable and dependable, it can be used with autoclavable biohazard disposal bags or commercially available trash bags. Requires four (4) D-batteries (not included) that will provide approximately 4,000 openings. An on-off switch deactivates the auto-open/close function.

Each unit is supplied with a preprinted, brightly-colored Biohazard label, 2 others for Recyclables and Trash, and a Blank label for individualized applications.



Available in three slim, modern designs:

A. F13202-0010 - White 2.5 gallon can is perfect for bench-top use and includes a removable rigid liner that won't leak or rust. Body and lid are molded of easy-to-clean ABS plastic, and the removable pail is molded of autoclavable polypropylene. Line with Scienceware® 14 x 19" biohazard disposal bags (see bags section, pages 8-10) or suitable size standard trash bags.

B. F13202-0020, Gray and C. F13202-0022 - Red 7.3 gallon cans have a molded polypropylene pail and gray ABS plastic top. Line with Scienceware® bag liners or biohazard disposal bags measuring 24 x 30, 24 x 36 or 25 x 35" (see bags section, pages 7-10) or suitable size standard trash bags.

D. F13202-0030 - 12 gallon can has a **Gray** body and black ABS plastic lid. The removable pail is made from **Stainless Steel**. Line with Scienceware® bag liners or biohazard disposal bags measuring 24 x 30, 24 x 36 or 25 x 35" or suitable size standard trash bags. (See Bag Section Pages 7-10)

| CATALOG NO. | CAPACITY | MATERIAL | DIMENSIONS (L X W X H) |
|----------------|------------|------------------------------------|---|
| A. F13202-0010 | 2 gallon | Plastic - White | 21.6 x 30.5 x 43cm (8½ x 12 x 17") |
| B. F13202-0020 | 7.3 gallon | Plastic - Gray | 36.8 x 26.7 x 57.1cm (14½ x 10½ x 22½") |
| C. F13202-0022 | 7.3 gallon | Plastic - Red | 36.8 x 26.7 x 57.1cm (14½ x 10½ x 22½") |
| D. F13202-0030 | 12 gallon | Stainless Steel Can Plastic Lid | 36.8 x 26.7 x 67.3cm (14½ x 10½ x 26½") |



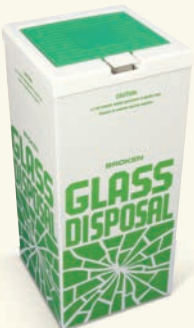
Disposal Cartons for Glass

Safe Disposal for Lab Glassware

Sturdy corrugated cardboard receptacle is supplied with a 2 mil thick, clear polypropylene bag to contain broken glass fragments and spilled liquids. When the box is full, lift the flap opening to a closed position and the entire unit is ready for disposal. Printed with eye-catching graphics in four languages (English, German, French, Spanish), it is packaged flat to save space and shipping costs and is quickly assembled. Available in two sizes. The floor model holds 18kg (40lb) of waste. The benchtop model holds 5.5kg (12lb). See F13204-0001 (below) for sanitary, reusable cover for floor model. Does not qualify as a DOT container. **6 per pack, 10 packs per case.**

| CATALOG NO. | MODEL | DIMENSIONS (L x W x H) | SHIPPING WEIGHT |
|-------------|----------|--------------------------------|-----------------|
| F24653-0001 | Floor | 30 x 30 x 69cm (12 x 12 x 27") | 6.8kg (15lb) |
| F24653-0002 | Benchtop | 20 x 20 x 25cm (8 x 8 x 10") | 3.2kg (7lb) |

NEW PRODUCT!



Cover for Glass Disposal Carton

Opens with a Simple Touch; Sanitary, Reusable

Dishwasher-safe and autoclave-safe, the reusable Disposal Carton Cover opens quickly and easily by pressing the built-in release tab - no batteries required! The cover fits any disposal carton with a 30.4 x 30.4cm (12 x 12") opening including

F24653-0001 Glass Disposal Floor Standing Carton (information above) and features a smooth 10.1 x 10.1cm (4 x 4") area for applying labels. The center panel is green to match the printing on the glass disposal cartons providing fast visual recognition of the waste stream. Compared to the disposable cardboard lids supplied with the cartons, the Disposal Carton Cover provides a wider opening 20.3 x 24.1cm (8" x 9½") permitting safer and more sanitary deposit of wastes into the container. Store the disposable cardboard lid under the bottom of the carton and, when carton is full, simply remove the reusable Disposal Carton Cover, replace with the cardboard lid, and dispose of the carton in the usual fashion. Wash the Disposal Carton Cover as needed, and it's ready for reuse. Autoclavable at 121°C (250°F). **Per each, 8 per case.**



| CATALOG NO. | FRAME/PANEL COLOR |
|-------------|-------------------|
| F13204-0001 | White/Green |

Disposal Carton for Plastics

This clearly labeled, rigid cardboard carton has a polypropylene liner to contain spills and is dedicated to separating plastics from the waste stream. When filled, the entire box can be discarded ensuring safe handling and ready identification of contents. Sized to fit under many benchtops, it has a volume of approximately 38 liters (10 gallons). Disposal boxes are shipped flat and easily fold into shape. **6 per pack, 10 packs per case.**



CATALOG NO.

F24657-0001

DIMENSIONS (L x W x H)

30 x 30 x 68cm (12 x 12 x 27")

NEW PRODUCT!



Biohazard Bag Holder Cover

Opens with a Single Touch; Sanitary, Reusable

Dishwasher and autoclave safe, the reusable Clavies® Biohazard Bag Holder Cover opens quickly and easily by pressing the built-in release tab – no batteries required! The cover fits both the Medium and Large sizes of the Clavies® Biohazard Bag Holders (F13192-0002 and F13192-0003, page 11) and features a smooth 10.1 x 10.1cm (4 x 4") area for applying labels. The cover can be installed in seconds and improves the sanitation of these biohazardous waste containers. The center panel of the lid opens to an upright position and reveals a large 20.3 x 24.1cm (8 x 9½") opening through which wastes can be deposited. Autoclavable at 121°C (250°F). **Per each, 8 per case.**



CATALOG NO.

F13192-0102

FRAME/PANEL COLOR

Orange/Orange



Biohazard Incinerator Cartons

Safe Disposal, No Need to Transfer Contents

This corrugated cardboard receptacle has a pair of tabs along the top edge that keep its clear 0.038mm (1.5 mil) thick polypropylene biohazard bag from slipping out of place. The snug-fitting lid has a flap for easily inserting waste material. When the box is full, pull the flap to a closed position and the entire unit is ready for incineration. Printed with large, bright, biohazard graphics and instructions in four languages (English, Spanish, French, German). Packaged flat to save space and shipping costs, the carton and inner bag can be assembled in seconds. Available in two sizes. See F13204-0000 (below) for reusable, sanitary cover for floor model Biohazard Incinerator Cartons. **6 per pack.**



| CATALOG NO. | MODEL | DIMENSIONS (L x W x H) |
|-------------|----------|--------------------------------------|
| F13205-0001 | Floor | 30.5 x 30.5 x 68.5cm (12 x 12 x 27") |
| F13205-0002 | Benchtop | 19.6 x 19.6 x 25.4cm (8 x 8 x 10") |

NEW PRODUCT!



Cover for Biohazard Incinerator Disposal Carton

*Opens with a Single Touch;
Sanitary, Reusable*

Dishwasher-safe and autoclave-safe, the reusable Disposal Carton Cover opens quickly and easily by pressing the built-in release tab – no batteries required! The cover fits any disposal

carton that has a 30.5 x 30.5cm (12 x 12") opening including F13205-0001 Biohazard Incinerator Floor Standing Carton (above) and features a smooth 10.1 x 10.1cm (4 x 4") area on top for applying labels. The center panel is red to match the printing on the Biohazard disposal cartons providing fast visual recognition of the waste stream. Compared to the disposable cardboard lids supplied with the cartons, the Disposal Carton Cover provides a wider opening 20.3 x 24.1cm (8 x 9½") permitting safer and more sanitary deposit of wastes into the container. Store the disposable cardboard lid on the bottom of the carton and when carton is full, simply remove the reusable Disposal Carton Cover, replace with the cardboard lid, and dispose of the carton in the usual fashion. Wash the Disposal Carton Cover as needed, and it's ready for re-use. Autoclavable at 121°C (250°F).



| CATALOG NO. | FRAME/PANEL COLOR |
|-------------|-------------------|
| F13204-0000 | White/Red |