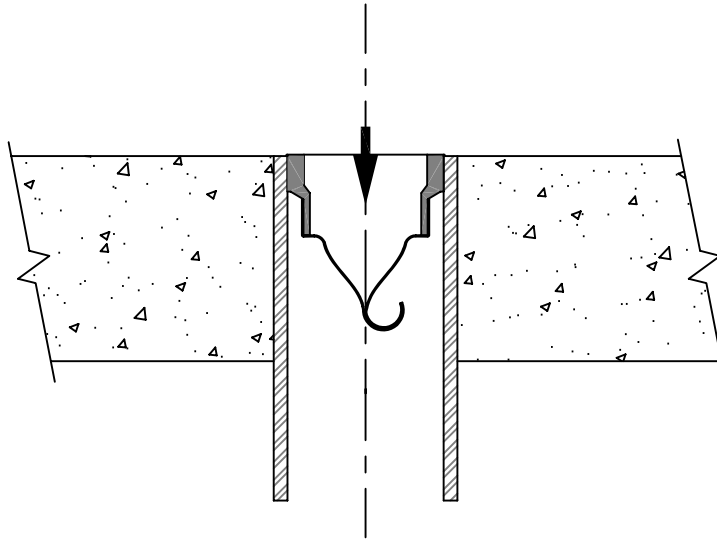


# TRAP GUARD DRAIN INSERT PROTECTION

CAN BE USED ABOVE OR BELOW GROUND FLOOR

TRAP GUARD INSERT FITTING FITS  
INSIDE OF CAST IRON OR PLASTIC PIPE



- PART NO. TG22IP 2" INSERT FITS INSIDE 2" CAST IRON PIPE
- PART NO. TG22P 2" INSERT FITS INSIDE 2" PVC OR ABS PIPE
- PART NO. TG33IP 3" INSERT FITS INSIDE 3" PVC, ABS OR CAST IRON PIPE
- PART NO. TG33-WADE 3" INSERT FITS INSIDE 3" WADE DRAIN TAILPIECE.

FOR TRAP GUARDS INSERTING INTO GASKET CONNECTED DRAINS, SEE DRAWING TG-23-G

## IMPORTANT NOTES :

1. This insert can be installed into any open ended pipe to prevent sewer gas emission.
2. They can be inserted into an open end pipe that connects larger top floor drains.
3. They can be inserted into open ended pipe that connects floor sinks or hub drains,
4. To make a watertight seal, use an adhesive type caulk under the top flange or if the pipe opening is PVC, a small amount of solvent cement can be used under the flange.

If the trap guard device should get damaged or impaired in any way, the device can be easily removed by using a sharp screw driver under the flange.

Note: Care should be taken not to touch the elastomeric flexible material with the primer.



NO FIRE RATINGS ARE  
REQUIRED FOR UNDERGROUND  
PIPING OR OPENINGS



**PROSET**<sup>®</sup>  
**SYSTEMS**  
FIRESTOP PENETRATOR™

DATE :  
9-02-03  
DRG . NO .  
TG-23-IPD