

Model Number	Faucet Holes	Depth-Inches	Drain Placement	Model Specified
G20192	n/a	7.5	Center	
G20192B	n/a	7.5	Rear	
G20193	n/a	6.5	Center	
G20194B	n/a	5.5	Rear (Center)	

## SINK DESCRIPTION

- 2000 Series single bowl undermount sink
- 20 gauge stainless steel, Brushed finish
- Center or rear drain, location as noted
- Mounting brackets included, other standard mounting hardware and silicone sealant not included

## CUT OUT DIMENSIONS

- Template included - template number 22507

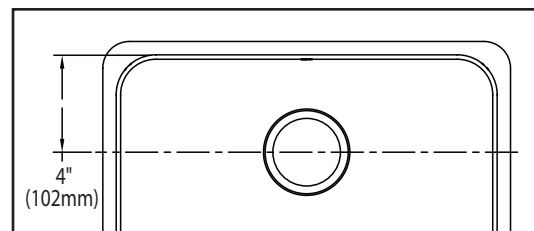
## STANDARDS

- Third party certified by IAPMO to meet ASME A112.19.3/CSA B45.4 and all applicable specifications referenced therein

## WARRANTY

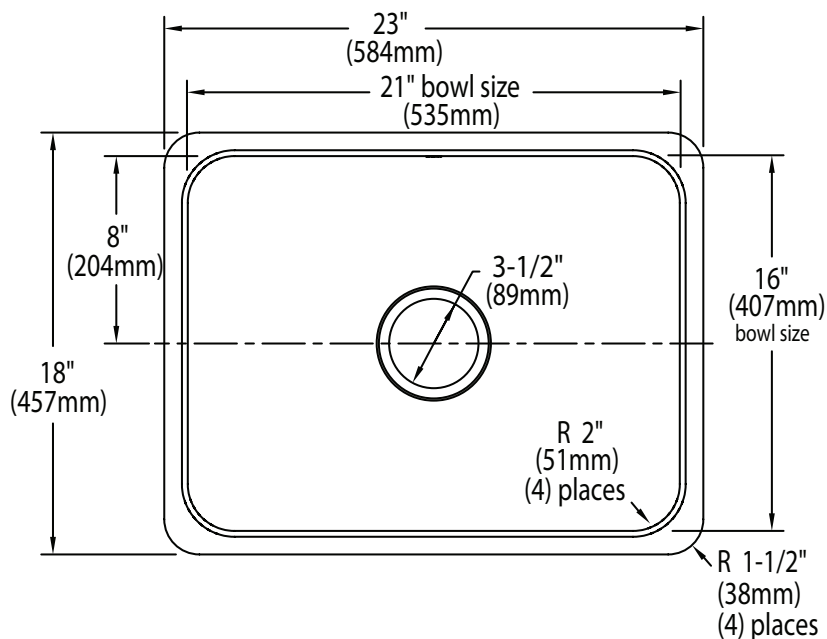
- Limited lifetime warranty against material or manufacturing defects to the original consumer purchaser

## Rear Drain Configuration



## CRITICAL DIMENSIONS

(DO NOT SCALE)



MADE IN THE **USA**

## Installation Detail

