



**RAVEN**<sup>™</sup>  
SPECIALTY PRODUCTS



PLUMBING **PRODUCT CATALOG**



# Table of Contents

## VALVES

Boiler Drains	Pg. 4,6
Sillcocks	Pg. 4-5
Vacuum Breakers	Pg. 6
Purge Station	Pg. 7
Expansion Tank Valves	Pg. 7
Pex Drop Ear Ball Valves	Pg. 8
Pex Ball Valves	Pg. 9,16
Flanged Ball Valves	Pg. 11
Isolation Valves	Pg. 11
Isolator Valves	Pg. 12
Sump Pump Check Valves	Pg. 12
Water Test Cap Valves	Pg. 13
Dishwasher Valves	Pg. 13
Icemaker Valves	Pg. 13
Washing Machine Valves	Pg. 13
Ball Valves	Pg. 14
Long Bonnet Valves	Pg. 15
Gate Valves	Pg. 15-16
Check Valves	Pg. 16
Gas Valves	Pg. 16
Press Ball Valves	Pg. 17
Anti-Sweat Valves	Pg. 19

## FITTINGS & NIPPLES

Dielectric Unions & Nipples	Pg. 9
Nipples Sets	Pg. 27
DWV Specialty P - Traps	Pg. 37-38
DWV Specialty Adapters	Pg. 40-44
Specialty Cast Copper Fittings	Pg. 44
CPVC Transition Fittings	Pg. 45
Pex Grip Clamps	Pg. 48
Circulator Flanges	Pg. 12

## HYDRONIC SPECIALTIES

Radiator Valves	Pg. 18
Copper Manifolds	Pg. 21,25
Black Steel Manifolds	Pg. 22-24
Air Eliminators	Pg. 24
Oil Tank Essentials	Pg. 26
Baseboard Connectors & Parts	Pg. 39
Termination Vent Screens	Pg. 28
Monoflow Tees	Pg. 41

## PLUMBING SPECIALTIES

Specialty Water Supply Stops	Pg. 20
Outdoor Shower Assembly	Pg. 29
PVC Closet Flanges	Pg. 30
Cast Iron Closet Flanges	Pg. 30
Pop-Up & Specialty Drains	Pg. 30-31
Repair Plates & Flanges	Pg. 32
Designer Shower Heads	Pg. 33
Tub Spouts	Pg. 34

## TOOLS & ACCESSORIES

E-Z Tools	Pg. 31
Crimp Tools	Pg. 46-47
Pipe Cutters	Pg. 48
Safety Signs	Pg. 36
Gorilla Glue	Pg. 36
Closet Bolts	Pg. 35
Teflon Tape	Pg. 35
Mesh	Pg. 35
Torque Wrench	Pg. 35

## TEST KITS

Gas Test Kits & Gauges	Pg. 49-50
Thermometers	Pg. 50

Raven Specialty Products is pleased to present to you our expanded 2016 Product Catalog. Your continued trust and patronage of our products and services will never be taken for granted.

**THANK YOU.**

The RAVEN Team  
RSP Industries



**BOILER DRAINS**

- 45° Angle prevents hose kinking
- Adjustable stem packing gland
- 300 PSI at 32° to 300° F
- Extended threads on bib spout for secure connection
- Forged brass
- Low operating torque
- Lead Free meets NSF-61 Standard
- Leaded meets ANSI/NSF 14 Standard

**FORGED BRASS BOILER DRAINS**



**T HANDLE - BRASS BOILER DRAINS**



Leaded Item #	Lead Free Item #	Size	Inner	Master
12BDBT	12BDBT-NL	1/2"	10	100
34BDBT	34BDBT-NL	3/4"	5	50

**LEVER HANDLE - BRASS BOILER DRAINS**



Item #	Size	Inner	Master
12BDBL-NL	1/2"	10	100
34BDBL-NL	3/4"	10	50

**T HANDLE - CHROME PLATED BOILER DRAINS**



Item #	Size	Inner	Master
12BDCT-NL	1/2"	10	100
34BDCT-NL	3/4"	10	50

**LEVER HANDLE - CHROME PLATED BOILER DRAINS**



Leaded Item #	Lead Free Item #	Size	Inner	Master
-	12BDCL-NL	1/2"	10	100
34BDCL	34BDCL-NL	3/4"	5	50

**T HANDLE - LONG BODY BOILER DRAINS**



Item #	Size	Inner	Master
12LBBD-NL	1/2"	10	100
34LBBD-NL	3/4"	5	50

**STREET END BOILER DRAINS**

- New design with dimensions of our acclaimed 1/4 turn boiler drain
- Street ends enable sweating valve directly into wrot fitting
- Offers a nice clean look when installed

**LOOSE KEY BOILER DRAINS W/ CAP**



Item #	Description	Inner	Master
R1670	Rough Brass	10	100
R1671	Chrome Plated	10	100

**STREET END - LEVER**



Item #	Size	Inner	Master
12BDBT#2-NL	1/2" Male Swt	10	100

**LONG BODY STREET END**



Item #	Size	Inner	Master
12BDBTLB-NL	1/2" Male Swt	5	60
34BDBTLB-NL	3/4" Male Swt	5	60

**SILCOCKS**



**CHROME PLATED - OVERSIZED FLANGE**

- Min. operating Temp 32° F
- Max. operating Temp 300° F
- Max. operating pressure 360 PSI
- Patented Item
- Stainless Steel Handle
- PTFE Ball
- Adjustable stem packing gland
- Extended Bib Threads for secure connection
- Oversized Flange
- 1/4 Turn Ball Valve
- Replaces conventional gate valve sillcock

**CHROME PLATED SILCOCKS**

Leaded Item #	Lead Free Item #	Size	Inner	Master
1165-IPS	1165IPS-NL	1/2" IPS	10	100
1166-IPS	1166IPS-NL	3/4" IPS	5	100
1165-C	1165C-NL	1/2" SWT	10	100
1166-C	1166C-NL	3/4" SWT	5	100



**CHROME PLATED PEX SILCOCKS**

- Compatible with WIRSBO® / UPONOR®

Leaded Item #	Lead Free Item #	Size	Inner	Master
1165-WIR	1165WIR-NL	1/2" WIRSBO®	10	50
-	1165PEX-NL	1/2" PEX	10	50

**SILCOCKS**



**CERAMIC CARTRIDGE SILCOCKS**

- 1/4 Turn Design
- Rough Brass

Leaded Item #	Lead Free Item #	Size	Inner	Master
1167-IPS	1167IPS-NL	1/2" IPS	10	60
1168-IPS	1168IPS-NL	3/4" IPS	10	60
1167-C	1167C-NL	1/2" SWT	10	60

**FROST FREE SILCOCKS  
CERAMIC CARTRIDGE**



**1/4 TURN WITH VACUUM BREAKER**

- Anti-syphon protection
- Integral backflow device protects up to 125 PSI of back pressure
- EPDM rubber packing helps prevent leaking behind packing nut
- 1/4 Turn design
- Will not rupture from freezing when valve is shut off and hose is removed
- Full circle operating threads on the valve body & retainer, for a secure fit
- Built in Vacuum Breaker

**FROST FREE SILCOCKS**

Item #	Size	Inner	Master
FP-1132-4C	1/2" x 4"	1	24
FP-1132-6C	1/2" x 6"	1	24
FP-1132-8C	1/2" x 8"	1	24
FP-1132-10C	1/2" x 10"	1	24
FP-1132-12C	1/2" x 12"	1	24
FP-1132-14C	1/2" x 14"	1	24

**REPLACEMENT CARTRIDGE**

Item #	Size	Inner	Master
FP-CC-8	8"	1	24
FP-CC-10	10"	1	24
FP-CC-12	12"	1	24
FP-CC-14	14"	1	24

**FROST FREE SILLCOCKS**



**MULTI TURN**

- Anti-siphon protection
- Backflow device protects up to 125 PSI of back pressure
- EPDM rubber packing helps prevent leaking behind packing nut



**FROST FREE SILLCOCKS**

LEADED Item #	LEAD FREE Item #	Size	Inner	Master
FP-1142-4	FP-1142-4-NL	1/2" x 4"	1	24
FP-1142-6	FP-1142-6-NL	1/2" x 6"	1	24
FP-1142-8	FP-1142-8-NL	1/2" x 8"	1	24
FP-1142-10	FP-1142-10-NL	1/2" x 10"	1	24
FP-1142-12	FP-1142-12-NL	1/2" x 12"	1	24
FP-1142-14	FP-1142-14-NL	1/2" x 14"	1	24

**FROST FREE SILLCOCKS W/ VACUUM BREAKER**

LEADED Item #	LEAD FREE Item #	Size	Inner	Master
	FP-1142V-4-NL	1/2" x 4"	1	24
FP-1142V-6	FP-1142V-6-NL	1/2" x 6"	1	24
FP-1142V-8	FP-1142V-8-NL	1/2" x 8"	1	24
FP-1142V-10	FP-1142V-10-NL	1/2" x 10"	1	24
FP-1142V-12	FP-1142V-12-NL	1/2" x 12"	1	24

**BOILER DRAIN**



**CERAMIC CARTRIDGE**

**1/4 TURN**

- 45° Angle prevents hose kinking
- 300 PSI 32°-300° F
- Extended threads on bib spout for secure connection
- Forged brass
- Low operating torque
- Lead Free meets NSF-61 Standard

Item #	Size	Inner	Master
12CCBD-NL	1/2"	5	60
34CCBD-NL	3/4"	5	60

**VACUUM BREAKERS**



**BACKFLOW PREVENTOR**

- Prevents contamination should the public drinking water system pressure drop
- Prevents water from siphoning back into the drinking water system
- Available in rough brass and chrome finish
- Lead Free

Item #	Size	Inner	Master
88C-NL	3/4" Chrome Plated	10	200
88B-NL	3/4" Rough Brass	20	200

**PURGE STATIONS**



**PURGE STATIONS W/ BOILER DRAIN**

- Designed for easy purge of water system
- For residential & commercial use with WOG
- IPS end complies with ANSI B1.20.1
- Heavy Duty forged brass body
- Hardened chrome plated brass ball w/ teflon seats
- Blowout proof stem
- Adjustable packing nut
- Reversible vinyl coated stamped steel lever handle
- Includes Purge Station & Boiler Drain
- Winterizes your house with single 1/4 turn action
- Hose end complies with ANSI B1.20.7
- Conforms to Federal spec WWV-35C
- Assembly Required

Item #	Size	Inner	Master
PS34CC	3/4" C x C	1	25
PS34CF	3/4" C x F	1	25
PS34CM	3/4" C x M	1	25
PS1CC	1" C x C	1	25
PS1CF	1" C x F	1	25

**BRASS EXPANSION TANK VALVES**



**PATENTED DESIGN**



**SINGLE SHUT OFF EXPANSION TANK VALVE**

- Isolates expansion tank & allows the boiler to fill at 0 pressure
- Installs between expansion tank & air scoop
- Labor saving design - Saves at least 8 soldered joints
- Allows for easy maintenance of heating system

**DOUBLE SHUT OFF EXPANSION TANK VALVE**

- Isolates expansion tank & allows the boiler to fill at 0 pressure
- Installs between expansion tank & air scoop
- Labor saving design - Saves at least 8 soldered joints
- Allows for easy maintenance of heating system

Item #	Description	Inner	Master
1129	1/2" Male X 1/2" Female W/Waste & Branch To Fill Boiler	10	50

Item #	Description	Inner	Master
1130	Same as 1129 W/ Extra Shut Off	1	1

**PEX DROP EAR BALL VALVES**

**806P & 807P SERIES**

**ASTM F1807**



- Patent Pending
- Mounting Ears Allow For "Sag Free" Tubing Installation
- Chrome Plated Ball
- 100 PSI at 180°
- Dezincification Resistant
- Lead Free
- Forged Brass
- Conforms To Standards ASTM F877, ASTM F1807 & NSF 61

**VALVE WITHOUT DRAIN**

Item #	Size	Inner	Master
806P012-NL	1/2"	20	100
806P034-NL	3/4"	10	60
806P001-NL	1"	10	60

**VALVE WITH DRAIN**

Item #	Size	Inner	Master
807P012-NL	1/2"	20	100
807P034-NL	3/4"	10	60
807P001-NL	1"	10	60

**WIRSBO® STYLE PEX DROP EAR BALL VALVES**

**806W & 807W SERIES**

**ASTM F1960**



- Available for WIRSBO® / UPONOR®
- Lead Free
- Blowout Proof Stem
- Conforms To Standards ASTM F877, ASTM F1960, ASTM E84, CSA B137.5 & NSF 359
- Dezincification Resistant
- 100 PSI at 180°
- Mounting Ears Allow For "Sag Free" Tubing Installation

**VALVE WITHOUT DRAIN**

Item #	Size	Inner	Master
806W012-NL	1/2"	20	100
806W034-NL	3/4"	10	50

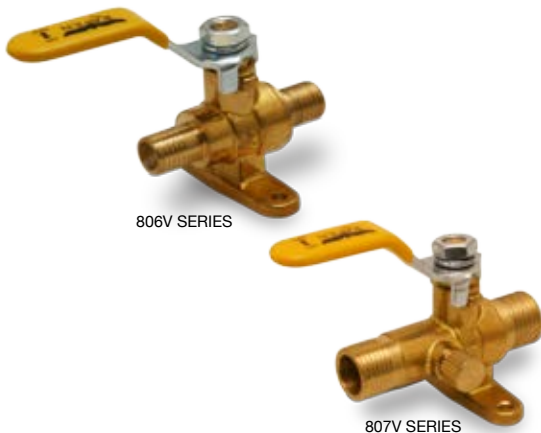
**VALVE WITH DRAIN**

Item #	Size	Inner	Master
807W012-NL	1/2"	20	100
807W034-NL	3/4"	10	50

**VIEGA® STYLE PEX DROP EAR BALL VALVES**

**806V & 807V SERIES**

**ASTM F2080**



- Available for VIEGA® Systems
- Lead Free
- Blowout Proof Stem
- Conforms To Standards NSF 61, ASTM F877 & ASTM F2080
- Dezincification Resistant
- 100 PSI at 180°
- Mounting Ears Allow For "Sag Free" Tubing Installation

**VALVE WITHOUT DRAIN**

Item #	Size	Inner	Master
806V012-NL	1/2"	20	100
806V034-NL	3/4"	20	100
806V001-NL	1"	10	100

**VALVE WITH DRAIN**

Item #	Size	Inner	Master
807V012-NL	1/2"	20	100
807V034-NL	3/4"	20	100



**WIRSBO® STYLE PEX BALL VALVES**



825W SERIES

800W SERIES

**800W & 825W SERIES**

**ASTM F1960 GRIP PEX**

- Available for WIRSBO® / UPONOR®
- Lead Free
- Blowout Proof Stem
- Conforms To Standards NSF 61, ASTM F877 & ASTM F1960
- Dezincification Resistant
- 100 PSI at 180°

**WIRSBO® STYLE VALVE**

Item #	Size	Inner	Master
800W012-NL	1/2"	20	100
800W034-NL	3/4"	20	100
800W001-NL	1"	10	100

**WIRSBO® STYLE W/ DRAIN**

Item #	Size	Inner	Master
825W012-NL	1/2"	20	100
825W034-NL	3/4"	20	100
825W001-NL	1"	10	100

**VIEGA® STYLE PEX BALL VALVES**



800V SERIES

825V SERIES

**800V & 825V SERIES**

**ASTM F2080 LOCK PEX**

- Available for VIEGA® Systems
- Lead Free
- Blowout Proof Stem
- Conforms To Standards NSF 61, ASTM F877 & ASTM F2080
- Dezincification Resistant
- 100 PSI at 180°

**VIEGA® STYLE VALVE**

Item #	Size	Inner	Master
800V012-NL	1/2"	20	100
800V034-NL	3/4"	20	100
800V001-NL	1"	10	100

**VIEGA® STYLE W/ DRAIN**

Item #	Size	Inner	Master
825V012-NL	1/2"	20	100
825V034-NL	3/4"	20	100
825V001-NL	1"	10	100

**PEX BALL VALVES**



825P SERIES

800P SERIES

**800P & 825P SERIES**

**ASTM F1807 CRIMP PEX**

- Lead Free
- Patent Pending
- Forged Brass
- Chrome Plated Ball
- 150 PSIG
- 600 PSI

**VALVE WITHOUT DRAIN**

Lever Handle Item #	T-Handle Item #	Size	Inner	Master
800P012-NL	800P012T-NL	1/2"	10	100
800P034-NL	800P034T-NL	3/4"	10	100
800P001-NL	800P001T-NL	1"	5	50

**VALVE WITH DRAIN**

Item #	Size	Inner	Master
825P012-NL	1/2"	10	100
825P034-NL	3/4"	10	100
825P001-NL	1"	5	50

## DIELECTRIC BRASS UNIONS

- Lead Free
- ASTM F492-95
- Rated 110°C/230°F



### FEMALE X FEMALE DIELECTRIC UNIONS

Item #	Size	Inner	Master
DUFF0012-NL	1/2"	15	120
DUFF0034-NL	3/4"	12	96
DUFF0100-NL	1"	6	48
DUFF0114-NL	1-1/4"	6	36
DUFF0112-NL	1-1/2"	4	24
DUFF0200-NL	2"	3	18
DUFF0212-NL	2-1/2"	0	4
DUFF0300-NL	3"	0	4
DUFF0400-NL	4"	0	2

### FEMALE X SWT DIELECTRIC UNIONS

Item #	Size	Inner	Master
DUFS0012-NL	1/2"	12	144
DUFS0034-NL	3/4"	15	120
DUFS3412-NL	3/4" X 1/2"	15	120
DUFS0100-NL	1"	12	72
DUFS0114-NL	1-1/4"	6	48
DUFS0112-NL	1-1/2"	6	36
DUFS0200-NL	2"	3	18
DUFS0212-NL	2-1/2"	0	4
DUFS0300-NL	3"	0	4
DUFS0400-NL	4"	0	2

### MALE X SWT DIELECTRIC UNIONS

Item #	Size	Inner	Master
DUMS0012-NL	1/2"	12	96
DUMS0034-NL	3/4"	12	72
DUMS3412-NL	3/4" X 1/2"	12	72

## DIELECTRIC BRASS NIPPLES

- Lead Free
- 300 PSI
- Rated up to 230° F
- ASTM A53, ANSI B1.20.1 & ASTM F492-95
- Galvanized Dielectric Nipples
- Pex Liner
- Metal to Metal design



### THREAD X THREAD DIELECTRIC NIPPLES

Item #	Size	Inner	Master
DNTT3425	3/4" X 2-1/2"	25	300
DNTT3430	3/4" X 3"	25	200
DNTT3440	3/4" X 4"	25	200
DNTT1025	1" X 2-1/2"	25	100
DNTT1030	1" X 3"	25	100
DNTT1040	1" X 4"	25	100
DNTT1140	1-1/4" X 4"	25	100
DNTT1540	1-1/2" X 4"	25	50
DNTT2040	2" X 4"	1	40
DNTT2560	2-1/2" X 6"	1	20
DNTT3060	3" X 6"	1	10
DNTT4060	4" X 6"	1	8

### GROOVED X GROOVED DIELECTRIC NIPPLES

Item #	Size	Inner	Master
DNGG2040	2" X 4"	1	1
DNGG2560	2-1/2" X 6"	1	1
DNGG3060	3" X 6"	1	10
DNGG4060	4" X 6"	1	1

### THREADED X GROOVED DIELECTRIC NIPPLES

Item #	Size	Inner	Master
DNTG2040	2" X 4"	1	40
DNTG2560	2-1/2" X 6"	1	20
DNTG3060	3" X 6"	1	10
DNTG4060	4" X 6"	1	8

**FLANGED BALL VALVE**

- Extended body protects valve when soldering
- Individually boxed
- Full Port
- Includes Nuts, Bolts & Gaskets
- 600 PSI WOG
- UPC APP. NSF61-9
- Patent Pending



890 SERIES

**MULTI-FUNCTION CIRCULATOR**



895 SERIES

**CIRCULATOR FLANGE LESS PURGE**

Item #	Size	Inner	Master
890C034	3/4" SWT	1	12
890C001	1" SWT	1	12
890C114	1-1/4" SWT	1	8
890C112	1-1/2" SWT	1	8
890T034	3/4" IPS	1	12
890T001	1" IPS	1	12
890T114	1-1/4" IPS	1	8
890T112	1-1/2" IPS	1	8

**CIRCULATOR FLANGE WITH PURGE**

Item #	Size	Inner	Master
895C034	3/4" SWT	2	24
895C001	1" SWT	1	12
895C114	1-1/4" SWT	2	16
895C112	1-1/2" SWT	2	16
895T034	3/4" IPS	2	24
895T001	1" IPS	2	24
895T114	1-1/4" IPS	2	16
895T112	1-1/2" IPS	2	16

**ISOLATION VALVES**

- For use with Tankless Water Heaters
- Available in PEX, IPS, & SWT
- 600 WOG
- Compact Design
- Forged Heavy Brass
- UPC Listed & Certified
- AB1953 Compliant
- NSF Compliant



**TANKLESS WATER HEATER VALVES**

**TANKLESS WATER HEATER ISOLATION VALVE KIT**

KIT Item #	ITEM CONTAINS	DESCRIPTION	QTY
IPS FTGV-ISOPRV-T-KIT-LF	FTGV-ISO34	IPS Hot & Cold Tankless Isolation Valves	1 Set
	FTGV-PRV34	3/4" Pressure Relief Valve	1
SWT FTGV-ISOPRV-S-KIT-LF	FTGV-ISO34	SWT Hot & Cold Tankless Isolation Valves	1 Set
	FTGV-PRV34	3/4" Pressure Relief Valve	1
PEX FTGV-ISOPRV-P-KIT-LF	FTGV-ISO34	PEX Hot & Cold Tankless Isolation Valves	1 Set
	FTGV-PRV34	3/4" Pressure Relief Valve	1

**ISOLATION VALVE**

Item #	Size	QTY
FTGV-ISO34-T-LF	IPS Hot & Cold Tankless Isolation Valves	1 Set
FTGV-ISO34-S-LF	SWT Hot & Cold Tankless Isolation Valves	1 Set
FTGV-ISO34-P-LF	PEX Hot & Cold Tankless Isolation Valves	1 Set

**PRESSURE RELIEF VALVE**

Item #	Size	QTY
FTGV-PRV34	3/4" Pressure Relief Valve	1

## CIRCULATOR FLANGES

### DUCTILE IRON CIRCULATOR FLANGE KIT

- For Taco/Grundfos
- All circulator flanges are packaged with nuts & bolts
- New high grip surface
- Ideal for use with pipe wrench



Green Item #	Red Item #	Size	Inner	Master
DIFLNG34G	DIFLNG34R	3/4"	25	100
DIFLNG1G	DIFLNG1R	1"	12	12
DIFLNG114G	DIFLNG114R	1-1/4"	12	12
DIFLNG112G	DIFLNG112R	1-1/2"	12	12

### BRONZE CIRCULATOR FLANGE KIT

- KIT Includes: 2 Flanges, 2 Neoprene Gaskets & 4 Nuts & Bolts
- Sold in Pairs
- Lead Free
- Cast Brass



SWT Item #	IPS Item #	Size	Inner	Master
CFSWT34-NL	CFIPS34-NL	3/4"	1	25
CFSWT1-NL	CFIPS1-NL	1"	20	40
CFSWT114-NL	CFIPS114-NL	1-1/4"	20	40
CFSWT112-NL		1-1/2"	20	40

### NEOPRENE GASKET FOR CIRCULATOR FLANGE



Item #	Size	Inner	Master
CFGASKET	3/4"	1	1000

### NUTS AND BOLTS FOR CIRCULATOR FLANGE



Item #	Size	Inner	Master
CFNUTS	1 Set	1	45

## BOILER TRIM ISOLATION VALVES

### AIR VENT ISOLATOR

- Extended design for airvent isolation
- Vent Flag won't interfere with ball valve operation
- Ball Pressure Rating 125 Lbs.
- Maximum Temperature 180°



Item #	Size	Inner	Master
1818MF	1/8" M X 1/8" F	21	336

### GAUGE ISOLATOR

- Avoids need to drain system to swap gauges
- Ball Pressure Rating 125 Lbs.
- Maximum Temperature 180°



Item #	Size	Inner	Master
1414MF	1/4" M X 1/4" F	21	336
1212MF	1/2" M X 1/2" F	16	320

### EXPANSION TANK ISOLATOR W/ WASTE

- Isolates allowing release of pressure for tank removal
- Prevents hazardous water spray
- Avoids need to drain system



Item #	Size	Inner	Master
1127	1/2" M X 1/2" F	10	100

## SUMP PUMP CHECK VALVES

- Stainless Steel Clamps
- Rubber Flexible Coupling
- ASTM C1173
- For Plastic, Cast Iron or Steel Pipes



Item #	Size	Inner	Master
SPCV112	1-1/2" X 1-1/4"	1	50
SPCV22	2" X 2"	1	50

## WATER TEST CAP & VALVE

### JIM CAP W/ BALL VALVE

- Allows for easy testing & draining of system
- Rubber Cap W/ 1/4 Turn Hose Fitting
- Made from durable rubber material
- Stainless steel band & clamp



Item #	Size	Inner	Master
WTC112	1 1/2"	1	1
WTC2	2"	1	1
WTC3	3"	1	1
WTC4	4"	1	1

## DISHWASHER VALVE

### BALL STYLE DISHWASHER VALVE

- Lead Free
- 1/4 Turn
- Connect dishwasher to 1/2" & 3/8" copper pipe with our new dish washer Valve. It features our unique combination tee with ball valve shutoff. The tee can be connected with our combination fitting by sweat or compression fitting.



Item #	Size	Inner	Master
DWV12	5/8" comp / 1/2" Sweat end x 1/2" Comp	1	1
DWV38-NL	5/8" comp / 1/2" Sweat end x 3/8" Comp LEAD FREE	1	1

## DUAL WASHING MACHINE VALVE

### BALL STYLE

- Single on/off lever that controls hot & cold water simultaneously
- For use with washing machine shut off
- Cast brass construction



Item #	Size	Inner	Master
WMV12	1/2" Sweat X 3/4" Hose	1	24

## ICE MAKER / HUMIDIFIER VALVES

### COMP X COMP ICE MAKER VALVE

- Connect ice maker to 1/2" copper pipe with our new Ice Maker Kit. Features our unique combination tee with ball valve shutoff.
- The tee can be connected with our combination fitting by sweat or compression fitting
- Lead Free
- 1/4 Turn



Item #	Size	Inner	Master
IMV38	3/8" comp / 1/2" Sweat end x 1/4" Comp LEADED	10	100
IMV58-NL	5/8" comp / 1/2" Sweat end x 1/4" Comp	10	100
IMV78-NL	7/8" comp / 3/4" Sweat end x 1/4" Comp	10	100

### PEX DROP EAR ICEMAKER VALVE

- Compatible with WIRSBO® / UPONOR®
- Drop Ears for Secure Mounting
- 1/4 Turn
- Lead Free



Item #	Size	Inner	Master
WIMV12-NL	Wirsbo® 1/2" Ends x 1/4" Comp	1	60
PIMV12-NL	Pex 1/2" Ends x 1/4" Comp	1	60

### ICE MAKER KIT W/ 18FT SS HOSE

- Includes 18ft Stainless Steel Hose
- Patent Pending
- 1/4 Turn
- Lead Free



Item #	Size	Inner	Master
IMKIT-NL	5/8" comp / 1/2" Sweat end x 1/4" Comp	1	1
WIMKIT-NL	Wirsbo® 1/2" Ends x 1/4" Comp	1	1
PIMKIT-NL	Pex 1/2" Ends x 1/4" Comp	1	1

**BALL VALVES**



**800 SERIES**



- Full Port
- 150 PSI
- 600 WOG
- Conforms to MSS SP-110
- IPS ends comply with ANSI/ASME B1.20.1
- SWT ends comply with ANSI/ASME B16.18
- UL/FM CSA UPC
- Lead Free
- Bottom loaded stem - Blowout Proof
- Valves are all pressure tested
- PTFE Stem packing
- Chrome plated steel handle

IPS Item #	SWT Item #	Size	Inner	Master
800T014-NL	-	1/4"	12	144
800T038-NL	-	3/8"	12	144
800T012-NL	800C012-NL	1/2"	10	100
800T034-NL	800C034-NL	3/4"	10	100
800T001-NL	800C001-NL	1"	5	50
800T114-NL	800C114-NL	1-1/4"	5	25
800T112-NL	800C112-NL	1-1/2"	5	25
800T002-NL	800C002-NL	2"	2	12
800T212-NL	800C212-NL	2-1/2"	2	12
800T003-NL	800C003-NL	3"	1	6
800T004-NL	800C004-NL	4"	2	4

**BALL VALVES W/ WASTE**



**825 SERIES IPS / SWT W DRAIN**

- Full Port
- 150 PSI
- 600 WOG
- Conforms to MSS SP-110
- UL/FM CSA UPC
- Lead Free
- Bottom loaded stem - Blowout Proof
- Valves are all pressure tested
- PTFE Stem packing
- Chrome plated steel handle
- IPS ends comply with ANSI/ASME B1.20.1
- SWT ends comply with ANSI/ASME B16.18

IPS Item #	SWT Item #	Size	Inner	Master
825T012-NL	825C012-NL	1/2"	10	100
825T034-NL	825C034-NL	3/4"	10	100
825T001-NL	825C001-NL	1"	5	50

**COMP BALL VALVES**



**800M & 825M SERIES W/ DRAIN**

- Compression ends for solderless connection to copper tubing
- Lead Free
- Each valve includes PTFE Seats
- 1/4 Turn
- Forged Construction
- Meets ANSI/NSF 61 Lead Free standard

**LESS DRAIN**

Item #	Size	Inner	Master
800M012-NL	1/2"	10	100
800M034-NL	3/4"	10	100
800M001-NL	1"	5	50

**WITH DRAIN**

Item #	Size	Inner	Master
825M012-NL	1/2"	10	100
825M034-NL	3/4"	10	100
825M001-NL	1"	5	50

**BALANCING VALVES**



**835 SERIES**

- Ball Valve W/ Screw Driver Slot
- Lead Free

Item #	Size	Inner	Master
835S012-NL	1/2"	10	80
835S034-NL	3/4"	10	60
835S001-NL	1"	5	40

## BALL VALVES

Available Jan. 2016



### 855 SERIES - T-HANDLE



- Full Port Design
- 150 PSI
- 600 WOG
- Conforms to MSS SP-110
- IPS ends comply with ANSI/ASME B1.20.1
- SWT ends comply with ANSI/ASME B16.18
- UL/FM CSA UPC
- Lead Free
- Bottom loaded stem - Blowout Proof
- Valves are all pressure tested
- Includes PTFE Stem packing
- Chrome plated steel handle

IPS Item #	SWT Item #	Size	Inner	Master
-	855C012-NL	1/2"	10	100
855T034-NL	855C034-NL	3/4"	10	100
855T001-NL	-	1"	5	50

## LONG BONNET BALL VALVES

Available Jan. 2016



### 824 SERIES



- Lead Free
- Forged Brass Construction
- 175 PSI
- 600 PSI WOG

IPS Item #	SWT Item #	Size	Inner	Master
824T012-NL	824C012-NL	1/2"	10	100
824T034-NL	824C034-NL	3/4"	10	100

## GATE VALVES

Available Jan. 2016



### 820 SERIES IPS / SWT

- Extra Heavy
- Cast Brass Construction
- Lead Free
- 125 PSI
- 150 PSI WOG

IPS Item #	SWT Item #	Size	Inner	Master
820T014-NL		1/4"	10	100
820T038-NL		3/8"	10	100
820T012-NL	820C012-NL	1/2"	10	100
820T034-NL	820C034-NL	3/4"	10	80
820T001-NL	820C001-NL	1"	5	50
820T114-NL	820C114-NL	1-1/4"	5	40
820T112-NL	820C112-NL	1-1/2"	5	30
820T002-NL	820C002-NL	2"	2	20
820T212-NL	820C212-NL	2-1/2"	1	8
820T003-NL	820C003-NL	3"	1	6
820T004-NL	820C004-NL	4"	1	4

## LONG BONNET GATE VALVES

Available Jan. 2016



### 822 SERIES LONG BONNET

- Rising Stem
- Lead Free
- Conforms to Federal Specs MSS-SP80

IPS Item #	SWT Item #	Size	Inner	Master
822T012-NL	822C012-NL	1/2"	10	80
822T034-NL	822C034-NL	3/4"	10	60

**COMP X COMP GATE VALVES**

Available Jan. 2016



**820M SERIES**

- Cast Brass Construction
- Lead Free
- 125 PSI
- 150 PSI WOG

Item #	Size	Inner	Master
820M012-NL	1/2"	10	80
820M034-NL	3/4"	10	60
820M001-NL	1"	5	40

**SWING CHECK VALVES**



**815 SERIES**

- 150 PSI SWP
- 200 PSI WOG
- UL/FM CSA UPC
- Lead Free
- Full Port Design

IPS Item #	SWT Item #	Size	Inner	Master
815T012-NL	815C012-NL	1/2"	10	100
815T034-NL	815C034-NL	3/4"	10	100
815T001-NL	815C001-NL	1"	5	50
815T114-NL	815C114-NL	1-1/4"	5	30
815T112-NL	815C112-NL	1-1/2"	5	30
815T002-NL	815C002-NL	2"	2	12
815T212-NL	815C212-NL	2-1/2"	1	8
815T003-NL	815C003-NL	3"	1	6
815T004-NL	815C004-NL	4"	1	6

**PEX X SWT BALL VALVES**



**845P & 846P SERIES W/ DRAIN**

- Lead Free
- Patent Pending
- Forged Brass
- Chrome Plated Ball
- 150 PSIG
- 600 PSI WOG

Item #	Size	Inner	Master
847PS012-NL	1/2"	10	100
847PS034-NL	3/4"	10	100

Item # W/ Drain	Size	Inner	Master
848PS012-NL	1/2"	10	100

**PEX X MIP BALL VALVES**



**847P SERIES**

- Lead Free
- Patent Pending
- Forged Brass
- Chrome Plated Ball
- 150 PSIG
- 600 PSI WOG

Item #	Size	Inner	Master
847PM012-NL	1/2"	10	100
847PM034-NL	3/4"	10	100

**GAS BALL VALVES**



**IPS T-HANDLE**

- CSA Certified for use with natural, manufactured or mixed liquified petroleum
- 2 piece design forged brass valve with coated zinc- aluminum cast handle
- LP gas/air mixtures
- Threaded end connections conform to ANSI/ASME B1.20.1
- ANSI standard Z21.15 for use as a gas appliance connector valve
- CSA certified 3-88 for use in 2 or 5 lb. house piping system
- MASS Approved

Item #	Size	Inner	Master
GBV038	3/8"	10	100
GBV012	1/2"	10	100
GBV034	3/4"	10	100
GBV001	1"	8	48
GBV114	1-1/4"	1	24
GBV112	1-1/2"	1	18
GBV002	2"	1	15



# PRO-PRESS™ BALL VALVES

## 810 SERIES



# LEAD FREE FORGED BRASS

### PRO-PRESS™ BALL VALVES

### 810 SERIES



- Lead Free Forged Brass
- ISO-9002
- 600 WOG (1/2" - 2")
- 250 WOG - 250 CWP (2-1/2" - 4")
- Full Port
- Double O-Ring
- PTFE Seats
- Blow Out Proof Stem
- UPC & NSF-61 Compliant
- AB195 & NSF-372 Compliant
- Sizes 1/2" - 4"

Item #	Size	Inner	Master
810R012-NL	1/2"	5	50
810R034-NL	3/4"	5	40
810R001-NL	1"	4	20
810R114-NL	1-1/4"	5	20
810R112-NL	1-1/2"	4	16
810R002-NL	2"	2	8
810R212-NL	2-1/2"	1	6
810R003-NL	3"	1	4
810R004-NL	4"	2	2

## HEATING SPECIALTIES

### STEAM ANGLE RADIATOR VALVE

- Teflon Seats
- 15 WSP - 60 WOG



Item #	Size	Inner	Master
<b>RSA012</b>	1/2"	10	60
<b>RSA034</b>	3/4"	8	48
<b>RSA001</b>	1"	6	36
<b>RSA114</b>	1-1/4"	4	24
<b>RSA112</b>	1-1/2"	3	18

### STEAM STRAIGHT RADIATOR VALVE



Item #	Size	Inner	Master
<b>RSS034</b>	3/4"	8	48
<b>RSS001</b>	1"	6	36
<b>RSS114</b>	1-1/4"	4	24
<b>RSS112</b>	1-1/2"	3	18

### STEAM CONVECTOR VALVE



Item #	Size	Inner	Master
<b>RSC001</b>	1"	6	36
<b>RSC114</b>	1-1/4"	4	24

### HOT WATER ANGLE SWT RADIATOR VALVE



Item #	Size	Inner	Master
<b>RWA012T</b>	1/2"	10	40
<b>RWA034T</b>	3/4"	6	20
<b>RWA001T</b>	1"	6	37

### HOT WATER ANGLE IPS RADIATOR VALVE



Item #	Size	Inner	Master
<b>RWA012S</b>	1/2"	10	80
<b>RWA034S</b>	3/4"	6	60
<b>RWA001S</b>	1"	6	36

### AIR VENT & KEY FOR AIR VENT



#### AIR VENT

Item #	Size	Inner	Master
<b>RAV18</b>	1/8"	100	1000

#### KEY FOR AIR VENT

Item #	Size	Inner	Master
<b>RAV18KEY</b>	1/8"	100	1000

## VALVES & ELBOWS

### IPS UNION ELBOWS



Item #	Size	Inner	Master
<b>RUE012T</b>	1/2"	10	60
<b>RUE034T</b>	3/4"	8	48
<b>RUE001T</b>	1"	6	36
<b>RUE114T</b>	1-1/4"	4	24

### SWT UNION ELBOWS



Item #	Size	Inner	Master
<b>RUE012T</b>	1/2"	8	48
<b>RUE034T</b>	3/4"	6	36

### RADIATOR AIR VALVE (HOFFMAN STYLE)



#### ANGLE

Item #	Size	Inner	Master
<b>RAVHA18</b>	1/8"	12	144

#### ANGLE / ADJUSTABLE

Item #	Size	Inner	Master
<b>RAVHA18A</b>	1/8"	12	144

#### STRAIGHT



Item #	Size	Inner	Master
<b>RAVHS18</b>	1/8"	12	144
<b>RAVHS14</b>	1/4"	12	144
<b>RAVHS3412</b>	3/4"X1/2"	12	144

### RADIATOR AIR VALVE (GORTON STYLE)



#### ANGLE - STEAM

Item #	Size	Inner	Master
<b>RAVG18-4</b>	#4 1/8"	10	60
<b>RAVG18-5</b>	#5 1/8"	8	48
<b>RAVG18-6</b>	#6 1/8"	6	36

Item #	Size	Inner	Master
<b>RAVG18-C</b>	#C 1/8"	10	60
<b>RAVG18-D</b>	#D 1/8"	10	60

#### STRAIGHT - STEAM



Item #	Size	Inner	Master
<b>RSVG18-6</b>	#6 1/8"	6	36

Item #	Size	Inner	Master
<b>RSVG18-C</b>	#C 1/8"	10	60
<b>RSVG18-D</b>	#D 1/8"	10	60

# #1 SINGLE ADJUSTABLE BRASS

NOW AVAILABLE IN CHROME PLATED



## ANTI-SWEAT VALVES

- Easy to install
- Parts can be replaced while valve is installed
- Genuine spring loaded check valves to prevent cross connection
- Hot water knob adjustment
- Easy drain adjustment to prevent freeze up
- Prevents toilets from sweating

### BRASS ANTI-SWEAT VALVE



Item #	Size	Inner	Master
R1290	1/2" Less Nuts	1	36
R1291	1/2" W/ Nuts	1	24

### CHROME PLATED ANTI-SWEAT VALVE



Item #	Size	Inner	Master
R1293	1/2" Less Nuts	10	50
R1292	1/2" W/ Nuts	1	36

### #1 REPAIR KIT

Item #	Size	Inner	Master
R1296	#1 Anti-Sweat Valve Repair Kit	1	1

## SPECIALTY WATER SUPPLY STOPS

- Lead Free
- Metal Handle
- Chrome Plated Brass Body

### CPVC WATER STOPS



Straight Item #	Angle Item #	Size	Inner	Master
27-CPS12-NL	27-CPA12-NL	1/2" CPVC X 3/8" COMP	25	100

### COMP X COMP WATER STOPS



Straight Item #	Angle Item #	Size	Inner	Master
27-CS14-NL	27-CA14-NL	1/4" COMP x 3/8" COMP	12	144
27-CS58-NL	27-CA58-NL	5/8" COMP X 3/8" COMP	12	144

### STOP VALVES W/ 5" EXTENSION TUBE



Straight Item #	Angle Item #	Size	Inner	Master
27-ESS12-NL	27-ESA12-NL	1/2" SWT X 3/8" COMP ANGLE	25	100

### FIX-A-VALVE WATER STOPS

3/8" Female comp threads for threading onto male comp end of valve  
Quick and easy way to replace an existing valve that has failed without shutting off main water supply



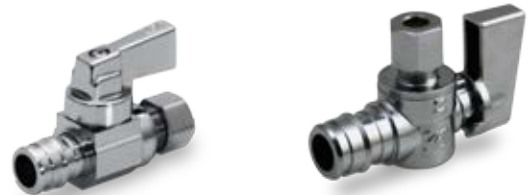
Item #	Size	Inner	Master
27-FS38-NL	3/8" FIP X 3/8" MALE	12	144

## VALVES & ELBOWS

- NSF & CSA approved
- 1/4 Turn
- Individually packaged

### WIRSBO® WATER STOPS

- Compatible with WIRSBO® / UPONOR®



Straight Item #	Angle Item #	Size	Inner	Master
-	27-WA1214-NL	1/2" Wirsbo x 1/4"	10	100
27-WS12-NL	27-WA12-NL	1/2" Wirsbo x 3/8"	10	100

### PEX WATER STOPS



Straight Item #	Angle Item #	Size	Inner	Master
27-PS1214-NL	27-PA1214-NL	1/2" PEX 1/4" COMP	12	144
27-PS12-NL	27-PA12-NL	1/2" PEX 3/8" COMP	12	144

### LOOSE KEY WATER STOPS



Straight Item #	Angle Item #	Size	Inner	Master
27-KPS12-NL	27-KPA12-NL	1/2" PEX X 3/8" COMP	12	144
27-KSS12-NL	27-KSA12-NL	1/2" SWT x 3/8" COMP	10	100
27-KCS58-NL	27-KCA58-NL	5/8" COMP x 3/8" COMP	10	100
27-KSS34-NL	27-KSA34-NL	3/4" SWT X 3/8" COMP	10	100

## COPPER MANIFOLD NAVIEN® ASSEMBLY



## FOR TANKLESS WATER HEATER

- Easy installation for Navien® Systems
- Saves over 3.5 hours of labor
- Eliminates 25 leak paths
- Eliminates costly field fabrication
- Avoids precise calculations
- Simplifies future maintenance
- Installation kits to fit over 200 different boilers and counting

## NAVIEN® STYLE COPPER MANIFOLD ASSEMBLY

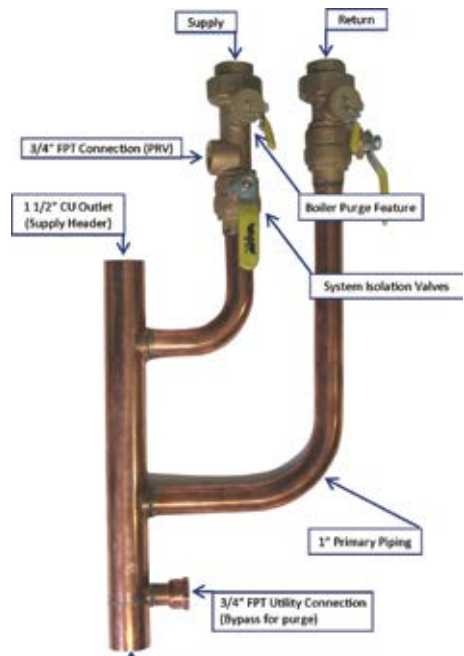
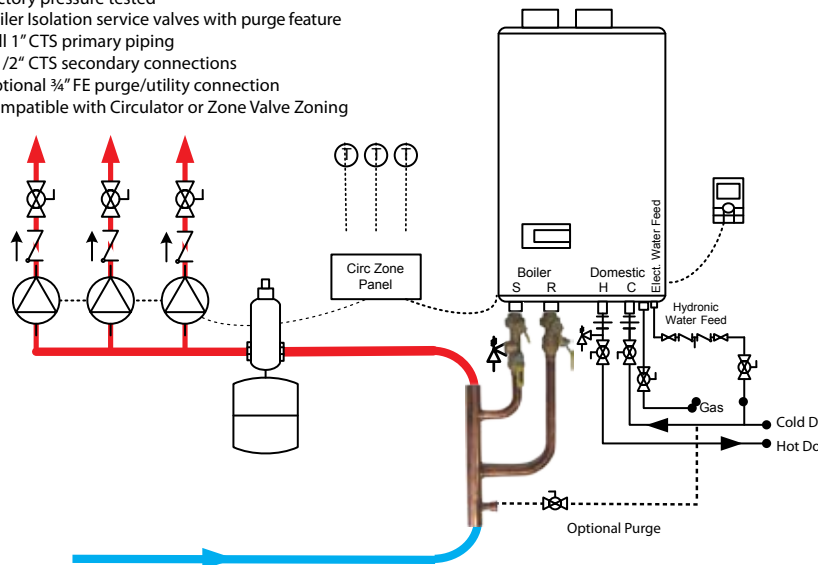
Item #	Size	Inner	Master
NCM112	1-1/2" Tankless Water Heater Copper Mainfold Assembly	1	1

## FOR USE ON NAVIEN® TANKLESS WATER HEATERS

### Primary/Secondary Heating Manifold for Select Wall Hung Boilers

#NCM112

- Substantial Savings on Labor and Materials!
  - No measuring or leveling involved
  - Save an hour of labor
  - Eliminate 4) 1 1/2" sweat connections
- Eliminate 8) 1" sweat connections
- Eliminate 6) measure, cut, and clean operations
- Left hand orientation keeps boiler piping clear of domestic water connections
- Union boiler connections with tapping for 3/4" PRV
- Factory pressure tested
- Boiler isolation service valves with purge feature
- Full 1" CTS primary piping
- 1 1/2" CTS secondary connections
- Optional 3/4" FE purge/utility connection
- Compatible with Circulator or Zone Valve Zoning



# STEEL ZONE HEADERS



AVAILABLE IN  
2,3,4,5,6,7,8 & 9 ZONES

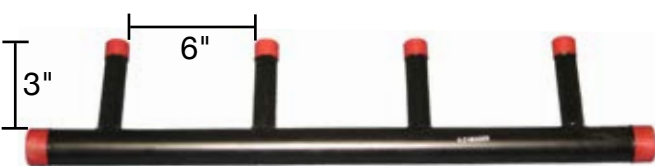
## BLACK STEEL MANIFOLDS

- Pipe Meets Standard ASTM A53 Sch.40
- Threaded Ends Comply with ANSI/ASME B 1.20.1
- Free of Burs and Fins
- The Angular Deviation Between Main Pipe & Branch pipe is 30°
- Used in a Boiler Room to act as a Hub for Heating Systems
- Available in 2,3,4,5, & 6 Zone

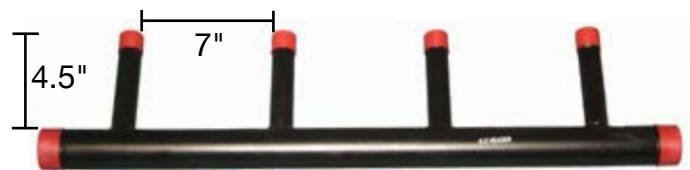
## ZONE HEADERS



### SIX INCH CENTER



### SEVEN INCH CENTER



## BLACK STEEL MANIFOLDS

- Each unit is Pressure & Water Tested to 100 PSI
- Can be used with zone valves or pumps
- Allows ability to add future zone off end of header
- All zones line up perfectly every time
- Allows for a neater job, presenting a professional appearance
- ASTM A53 Schedule 40
- Thread protectors on all threads

### 2 ZONE HEADER

7" Center / 4-1/2" Branch Length	6" Center / 3" Branch Length	Size	Inner	Master
<b>2zone134-7</b>	<b>2zone134-6</b>	1" x 3/4"	1	6
<b>2zone11434-7</b>	<b>2zone11434-6</b>	1-1/4" x 3/4"	1	6
<b>2zone1141-7</b>	<b>2zone1141-6</b>	1-1/4" x 1"	1	6
<b>2zone11234-7</b>	<b>2zone11234-6</b>	1-1/2" x 3/4"	1	6
<b>2zone1121-7</b>	<b>2zone1121-6</b>	1-1/2" x 1"	1	6
<b>2zone114341-7</b>	<b>2zone114341-6</b>	1-1/4" X 3/4" & 1 X 1"	1	6

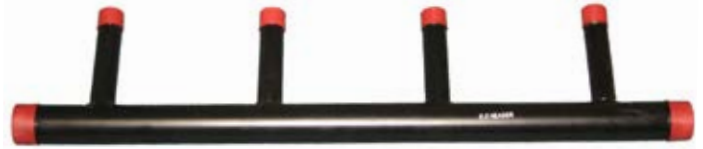
### 3 ZONE HEADER

7" Center / 4-1/2" Branch Length	6" Center / 3" Branch Length	Size	Inner	Master
<b>3zone134-7</b>	<b>3zone134-6</b>	1" x 3/4"	1	1
<b>3zone11434-7</b>	<b>3zone11434-6</b>	1-1/4" x 3/4"	1	6
<b>3zone1141-7</b>	<b>3zone1141-6</b>	1-1/4" x 1"	1	6
<b>3zone1143412-7</b>	<b>3zone1143412-6</b>	1-1/4" X 3/4" & 1 X 1/2"	1	1
<b>3zone114341-7</b>	<b>3zone114341-6</b>	1-1/4" x 3/4" & 1 x 1"	1	6
<b>3zone11234-7</b>	<b>3zone11234-6</b>	1-1/2" x 3/4"	1	6
<b>3zone112341-7</b>	<b>3zone112341-6</b>	1-1/2" x 3/4" & 1 x 1"	1	12
<b>3zone21-7</b>	<b>3zone21-6</b>	2" x 1"	1	1
<b>3zone2114-7</b>	<b>3zone2114-6</b>	2" x 1-1/4"	1	1

### 4 ZONE HEADER

7" Center / 4-1/2" Branch Length	6" Center / 3" Branch Length	Size	Inner	Master
<b>4zone134-7</b>	<b>4zone134-6</b>	1" x 3/4"	1	1
<b>4zone11434-7</b>	<b>4zone11434-6</b>	1-1/4" X 3/4"	1	6
<b>4zone1141-7</b>	<b>4zone1141-6</b>	1-1/4" X 1"	1	6
<b>4zone1143412-7</b>	<b>4zone1143412-6</b>	1-1/4 X 3/4" & 1 X 1/2"	1	1
<b>4zone114341-7</b>	<b>4zone114341-6</b>	1-1/4" X 3/4" & 1 X 1"	1	6
<b>4zone11234-7</b>	<b>4zone11234-6</b>	1-1/2" X 3/4"	1	6
<b>4zone1121-7</b>	<b>4zone1121-6</b>	1-1/2" X 1"	1	6
<b>4zone112341-7</b>	<b>4zone112341-6</b>	1-1/2" x 3/4" & 1 x 1"	1	8
<b>4zone21-7</b>	<b>4zone21-6</b>	2" x 1"	1	1
<b>4zone2114-7</b>	<b>4zone2114-6</b>	2" x 1-1/4"	1	1
<b>4zone2112-7</b>	<b>4zone2112-6</b>	2" x 1-1/2"	1	1

## EZ HEADERS



### 5 ZONE HEADER

7" Center / 4-1/2" Branch Length	6" Center / 3" Branch Length	Size	Inner	Master
<b>5zone11434-7</b>	<b>5zone11434-6</b>	1-1/4" X 3/4"	1	1
<b>5zone1143412-7</b>	<b>5zone1143412-6</b>	1-1/4 X 3/4" & 1 X 1/2"	1	1
<b>5zone114341-7</b>	<b>5zone114341-6</b>	1-1/4" x 3/4" & 1 x 1"	1	8
<b>5zone1141-7</b>	<b>5zone1141-6</b>	1-1/4" x 1"	1	10
<b>5zone11234-7</b>	<b>5zone11234-6</b>	1-1/2" x 3/4"	1	1
<b>5zone112341-7</b>	<b>5zone112341-6</b>	1-1/2" X 3/4" & 1 X 1"	1	8
<b>5zone1121-7</b>	<b>5zone1121-6</b>	1-1/2" X 1"	1	6
<b>5zone21-7</b>	<b>5zone21-6</b>	2" x 1"	1	1
<b>5zone2114-7</b>	<b>5zone2114-6</b>	2" x 1-1/4"	1	1

### 6 ZONE HEADER

7" Center / 4-1/2" Branch Length	6" Center / 3" Branch Length	Size	Inner	Master
<b>6zone11434-7</b>	<b>6zone11434-6</b>	1-1/4" X 3/4"	1	1
<b>6zone1141-7</b>	<b>6zone1141-6</b>	1-1/4" x 1"	1	1
<b>6zone114341-7</b>	<b>6zone114341-6</b>	1-1/4" x 3/4" & 1 x 1"	1	6
<b>6zone11234-7</b>	<b>6zone11234-6</b>	1-1/2" x 3/4"	1	1
<b>6zone112341-7</b>	<b>6zone112341-6</b>	1-1/2" X 3/4" & 1 X 1"	1	1
<b>6zone1121-7</b>	<b>6zone1121-6</b>	1-1/2" x 1"	1	1
<b>6zone21-7</b>	<b>6zone21-6</b>	2" x 1"	1	1
<b>6zone2114-7</b>	<b>6zone2114-6</b>	2" x 1-1/4"	1	1

### 7 ZONE HEADER

7" Center / 4-1/2" Branch Length	6" Center / 3" Branch Length	Size	Inner	Master
<b>7zone21-7</b>	<b>7zone21-6</b>	2" x 1"	1	1
<b>7zone2114-7</b>	<b>7zone2114-6</b>	2" x 1-1/4"	1	1

### 8 ZONE HEADER

7" Center / 4-1/2" Branch Length	6" Center / 3" Branch Length	Size	Inner	Master
<b>8zone114134-7</b>	<b>8zone114134-6</b>	1-1/4" X 1" & 1 X 3/4"	1	8
<b>8zone2114-7</b>	<b>8zone2114-6</b>	2" x 1-1/4"	1	1

### 9 ZONE HEADER

7" Center / 4-1/2" Branch Length	6" Center / 3" Branch Length	Size	Inner	Master
<b>9zone112341-7</b>	<b>9zone112341-6</b>	1-1/2" X 3/4" & 2 X 1"	1	1
<b>9zone2114-7</b>	<b>9zone2114-6</b>	2" X 1-1/4"	1	8

## BLACK STEEL MANIFOLDS - OFFSET

- Each unit is Pressure & Water Tested to 100 PSI
- Can be used with zone valves or pumps
- Allows ability to add future zone off end of header
- All zones line up perfectly every time
- Allows for a neater job, presenting a professional appearance
- ASTM A53 Schedule 40
- Thread protectors on all threads

## E-Z HEADERS W/ OFFSET BRANCHES



### 7 ZONE HEADER W/ OFFSET

7" Center / 4-1/2" Branch Length	6" Center / 3" Branch Length	Size	Inner	Master
<b>7ZF11434-7</b>	<b>7ZF11434-6</b>	1-1/4" X 3/4"	1	8
<b>7ZF1121-7</b>	<b>7ZF1121-6</b>	1-1/2" X 1"	1	8

### 9 ZONE HEADER W/ OFFSET

7" Center / 4-1/2" Branch Length	6" Center / 3" Branch Length	Size	Inner	Master
<b>9ZF1141-7</b>	<b>9ZF1141-6</b>	1-1/4" X 1"	1	8
<b>9ZF11234-7</b>	<b>9ZF11234-6</b>	1-1/2" X 3/4"	1	8
<b>9ZF112341-7</b>	<b>9ZF112341-6</b>	1-1/2" X 3/4" & 2 X 1"	1	8
<b>9ZF21-7</b>	<b>9ZF21-6</b>	2" x 1"	1	8

### 8 ZONE HEADER W/ OFFSET

7" Center / 4-1/2" Branch Length	6" Center / 3" Branch Length	Size	Inner	Master
<b>8ZF114134-7</b>	<b>8ZF114134-6</b>	1-1/4" X 1" & 3 X 3/4"	1	8
<b>8ZF112341-7</b>	<b>8ZF112341-6</b>	1-1/2" X 3/4" & 1 X 1"	1	8
<b>8ZF21-7</b>	<b>8ZF21-6</b>	2" X 1"	1	8

### 12 ZONE HEADER W/ OFFSET

7" Center / 4-1/2" Branch Length	6" Center / 3" Branch Length	Size	Inner	Master
<b>12ZF2112-7</b>	<b>12ZF2112-6</b>	2" x 1/2"	1	8

## STEEL MANIFOLDS W/ AIR ELIMINATOR

- Each unit is Pressure & Water Tested to 100 PSI
- Can be used with zone valves or pumps
- Allows ability to add future zone off end of header
- All zones line up perfectly every time
- Allows for a neater job, presenting a professional appearance
- ASTM A53 Schedule 40
- Thread protectors on all threads

### 2 ZONE HEADER W/ AIR ELIMINATOR

7" Center / 4-1/2" Branch Length	6" Center / 3" Branch Length	Size	Inner	Master
<b>2ZASC114341-7</b>	<b>2ZASC114341-6</b>	1-1/4" X 3/4" & 1 X 1-1/4" A/E	1	1

### 4 ZONE HEADER W/ AIR ELIMINATOR

7" Center / 4-1/2" Branch Length	6" Center / 3" Branch Length	Size	Inner	Master
<b>4ZASC114341-7</b>	<b>4ZASC114341-6</b>	1-1/4" X 3/4" & 1 X 1-1/4" A/E	1	1

### 3 ZONE HEADER W/ AIR ELIMINATOR

7" Center / 4-1/2" Branch Length	6" Center / 3" Branch Length	Size	Inner	Master
<b>3ZASC114341-7</b>	<b>3ZASC114341-6</b>	1-1/4" X 3/4" & 1 X 1-1/4" A/E	1	1

### 5 ZONE HEADER W/ AIR ELIMINATOR

7" Center / 4-1/2" Branch Length	6" Center / 3" Branch Length	Size	Inner	Master
<b>5ZASC114341-7</b>	<b>5ZASC114341-6</b>	1-1/4" X 3/4" & 1 X 1-1/4" A/E	1	1

## AIR ELIMINATORS

- Engineered Baffle to separate air from water
- 1 Piece
- Never requires servicing
- Cast Iron



## AIR SCOOPS

Item #	Size	Inner	Master
<b>ETP-T15-AS34</b>	3/4"	10	60
<b>ETP-T15-AS1</b>	1"	25	100
<b>ETP-T15-AS114</b>	1-1/4"	10	40
<b>ETP-T15-AS112</b>	1-1/2"	10	60



## COPPER MANIFOLDS

- Applications: Zone manifolds, Radiant Manifolds,
- Return manifolds and Boiler headers
- Packaged with metal sheath to prevent damage during shipping
- Standard SWT ends
- Individually boxed for easy shipping

### 24 COPPER BRANCH MANIFOLD TYPE K

- 3" Center
- 72" Long
- Type K copper

Item #	Size	Inner	Master
CM-1C2412-K	1" x 1/2"	1	1
CM-1C2434-K	1" x 3/4"	1	1
CM-114C2412-K	1-1/4" x 1/2"	1	1
CM-114C2434-K	1-1/4" x 3/4"	1	1

### 18 COPPER BRANCH MANIFOLD TYPE L

- 4" Center
- 72" Long
- Type L copper

Item #	Size	Inner	Master
CM-1C1812	1" x 1/2"	1	1
CM-1C1834	1" x 3/4"	1	1
CM-114C1812	1-1/4" x 1/2"	1	1
CM-114C1834	1-1/4" x 3/4"	1	1
CM-112C1834	1-1/2" x 3/4"	1	1
CM-2C1834	2" x 3/4"	1	1

### 12 COPPER BRANCH MANIFOLD TYPE L

- 6" Center
- 72" Long
- Type L copper

Item #	Size	Inner	Master
CM-1C1212	1" x 1/2"	1	1
CM-1C1234	1" x 3/4"	1	1
CM-114C1212	1-1/4" x 1/2"	1	1
CM-114C1234	1-1/4" x 3/4"	1	1
CM-114C121	1-1/4" x 1"	1	1
CM-112C1234	1-1/2" x 3/4"	1	1
CM-112C121	1-1/2" x 1"	1	1
CM-2C1234	2" x 3/4"	1	1
CM-2C121	2" x 1"	1	1

## COPPER HEADERS



### 6 COPPER BRANCH MANIFOLD TYPE L

- 4" Center
- 24" Long
- Type L copper

Item #	Size	Inner	Master
CM-1C612	1" x 1/2"	1	1
CM-114C634	1-1/4" x 3/4"	1	1

### 5 COPPER BRANCH MANIFOLD TYPE L

- 4" Center
- 20" Long
- Type L copper

Item #	Size	Inner	Master
CM-114C534	1-1/4" x 3/4"	1	1

### 4 COPPER BRANCH MANIFOLD TYPE L

- 4" Center
- 16" Long
- Type L copper

Item #	Size	Inner	Master
CM-114C434	1-1/4" x 3/4"	1	1

### 3 COPPER BRANCH MANIFOLD TYPE L

- 6" Center
- 18" Long
- Type L copper

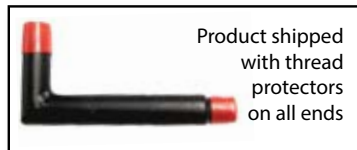
Item #	Size	Inner	Master
CM-1C3346	1" x 3/4"	1	1
CM-114C3346	1-1/4" x 3/4"	1	1

### 3 COPPER BRANCH MANIFOLD TYPE L

- 4" Center
- 12" Long
- Type L copper

Item #	Size	Inner	Master
CM-1C334	1" x 3/4"	1	1
CM-114C334	1-1/4" x 3/4"	1	1

## OIL TANK



Product shipped with thread protectors on all ends



## OIL TANK ESSENTIALS

### OIL TANK LEGS

- Used to support Oil Tanks
- Heavy Duty

Item #	Size	Inner	Master
TANKLEGS10	1-1/4" X 10"	1	24
TANKLEGS12	1-1/4" X 12"	1	24
TANKLEGS13	1-1/4" X 13"	1	24
TANKLEGS14	1-1/4" X 14"	1	24

### OIL TANK ELBOW

- Heavy duty Sch 40 steel elbow
- Will not break with pressure from ice or if stepped on
- This elbow extends 2" past the outside of tank allowing for easy connection of isolation valves
- Inline fusible oil valve can be placed after isolation valve

Item #	Size	Inner	Master
OTL1238	3/8" X 1/2" (Dimensions: 2" x 6")	12	60

### OIL TANK GALVANIZED VENT CAPS W/ SCREEN

- Use on oil tank vent pipes
- Lightweight design
- Includes screen to prevent debris from entering vent pipe
- Zinc plated galvanized steel to prevent rust

Item #	Size	Inner	Master
VCS114	1-1/4"	1	100
VCS112	1-1/2"	1	100
VCS2	2"	1	50

### OIL TANK GALVANIZED VENT CAPS L/ SCREEN

- Use on oil tank vent pipes
- Lightweight design
- Zinc plated galvanized steel to prevent rust

Item #	Size	Inner	Master
VC114	1-1/4"	1	100

## NIPPLE SETS

- All of our black tote kits are shipped in a convenient carrying case with labels on the inside box lids indicating sizes



### CLOSE - 6 ASSORTED BLACK

- Includes 1 of each size Black nipple - Close to 6"
- Uniquely packaged for job site use

Item #	Size	Inner	Master
NPBS3800	3/8"	1	16
NPBS1200	1/2"	1	16
NPBS3400	3/4"	1	16
NPBS1000	1"	1	8
NPBS1140	1-1/4"	1	6
NPBS1120	1-1/2"	1	4
NPBS2000	2"	1	2

### CLOSE - 6 ASSORTED XH BLACK SEAMLESS

- Includes 1 of each size XH Galvanized nipple - Close to 6"
- Uniquely packaged for job site use

Item #	Size	Inner	Master
BXHS1200	1/2"	1	1
BXHS3400	3/4"	1	1
BXHS1000	1"	1	1
BXHS1140	1-1/4"	1	1
BXHS1120	1-1/2"	1	1
BXHS2000	2"	1	1

### CLOSE - 6 ASSORTED GALVANIZED

- Includes 1 of each size Galvanized nipple - Close to 6"
- Uniquely packaged for job site use

Item #	Size	Inner	Master
NPGS1200	1/2"	1	16
NPGS3400	3/4"	1	16
NPGS1000	1"	1	8
NPGS1140	1-1/4"	1	6
NPGS1120	1-1/2"	1	4
NPGS2000	2"	1	4

### 66 ASSORTED BLACK

- Includes 6 of each size Black nipple - Close to 6"
- Includes convenient carrying case

Item #	Size	Inner	Master
NPBA1200	1/2"	1	1
NPBA3400	3/4"	1	1
NPBA1000	1"	1	1

### 66 ASSORTED GALVANIZED

- Includes 6 of each size Galvanized nipple - Close to 6"
- Includes convenient carrying case

Item #	Size	Inner	Master
NPGA1200	1/2"	1	1
NPGA3400	3/4"	1	1
NPGA1000	1"	1	1

### CLOSE - 6 ASSORTED XH BLACK

- Includes 1 of each size XH Black nipple - Close to 6"
- Uniquely packaged for job site use

Item #	Size	Inner	Master
NPXS1200	1/2"	1	1
NPXS3400	3/4"	1	1
NPXS1000	1"	1	1
NPXS1140	1-1/4"	1	1
NPXS1120	1-1/2"	1	1
NPXS2000	2"	1	1

### METAL NIPPLE TOTE TRAYS

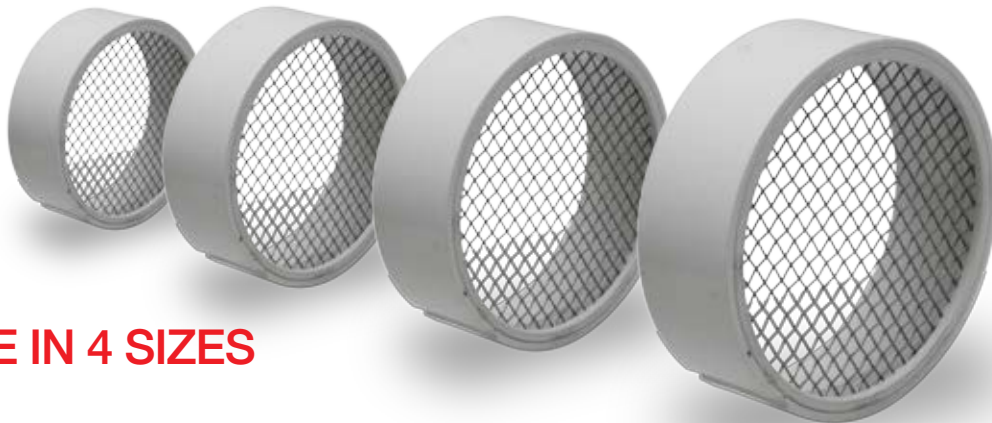
- Convenient metal carrying case
- Can hold up to 77 Nipples

Item #	Size	Inner	Master
NTT12	1/2"	1	4
NTT34	3/4"	1	3
NTT01	1"	1	24

**PVC SPECIALTIES**

**TERMINATION VENT SCREENS**

**PREVENTS  
LEAVES  
DEBRIS &  
WILDLIFE  
FROM ENTERING**



**AVAILABLE IN 4 SIZES**

**PVC VENT SCREENS W/ STAINLESS STEEL SCREEN**

- Type 304 Stainless Steel
- Slotted side allows for condensation to drain
- Prevents leaves, debris and wildlife from entering PVC exhaust vent piping
- Easily installs in hub of PVC fitting

Item #	Size	Inner	Master
<b>TVS2SS</b>	2"	1	100
<b>TVS3SS</b>	3"	1	100
<b>TVS4SS</b>	4"	1	50
<b>TVS6SS</b>	6"	1	12

**OUTDOOR SHOWER**

**PRE-ASSEMBLED. MADE IN U.S.A.**

- Made from PVC trim board
- Pre-assembled and ready for installation using Symmons Pressure Balance Valve
- Easy connections to hot and cold water piping
- Simple block mount bracket included
- Height = 36"
- Width = 9"



**OUTDOOR SHOWER W/ TEMPTROL TRIM**

Item #	Size	Inner	Master
<b>ODSHWT</b>	Pre-assembled Outdoor Shower with Temptrol CP Trim	1	1

**OUTDOOR SHOWER W/ ALLURA TRIM**

Item #	Size	Inner	Master
<b>ODSHWA</b>	Pre-assembled Outdoor Shower with Allura CP Trim	1	1

## PVC & ABS FLANGES



## WIDE VARIETY OF CLOSET FLANGES



### CLOSET FLANGES WITH STAINLESS STEEL RING

PVC Item #	ABS Item #	Size	Inner	Master
PVC3ST2-1/2	ABS3ST2-1/2	3" street flange 2-1/2" long. Fits into 3" hub	1	12
PVC333SS	ABS333SS	3" x 4-1/2" Male long street closet flange. Fits into 3" pipe	1	12
PVC4325SS	ABS4325SS	4" x 3" x 2-1/2" Fits into a 4" and over a 3" pipe - 2-1/2" long	1	12
PVC436SS	ABS436SS	4" x 3" x 6" Fits into a 4" and over a 3" pipe 6" long	1	12
3ST6PVC	3ST6ABS	3" street flange 6" long. Fits into a 3" hub	1	12

### COMPRESSION & OFFSET PVC CLOSET FLANGES

Item #	Size	Inner	Master
PVCCCF3	3" (Fits inside 3" sch-40 PVC pipe or 3" cast iron pipe)	1	12
PVCCCF4	4" (Fits inside 4" sch-40 PVC pipe or 4" cast iron pipe)	1	12
PVCCOF	Offset (Fits over 3" or inside 4" PVC pipe) W/ adjustable ring	1	12

## SPECIALTY CAST IRON CLOSET FLANGES



## SPECIALTY CAST IRON FLANGES

### EXTRA HEAVY CAST IRON CLOSET FLANGES

Item #	Size	Inner	Master
CFCX4212	4" X 2-1/2"	1	12
CFCX0404	4" X 4"	1	12
CFCX0406	4" X 6"	1	8

### SPECIALTY CAST IRON CLOSET FLANGES

Item #	Size	Inner	Master
CFCS0402	4" X 2" Shallow Offset	1	12
CFCNH0403	4" X 3" No Hub	1	12
CFCCR0403	4" X 3" Caulk Reducing	1	12
CFCD0404	4" X 4" Deep Offset	1	12

## DRAINS W/ STAINLESS STRAINER



### SOLVENT WELD DRAIN W/ KNOCK OUT

Item #	Size	Inner	Master
2PVCSHDR	2" PVC	1	24
2ABSSHDR	2" ABS	1	24

## ONE TOUCH POP UP DRAINS

- 17 Gauge
- Featuring one touch open & close
- Heavy Duty


## FOR VESSELS W/O OVERFLOW



## ONE TOUCH POP UP SPECIALTY DRAINS

Item #	Description	Inner	Master
30-05PC	Polished Chrome	1	20
30-05PN	Polished Nickel	1	20
30-05BN	Brushed Nickel	1	20
30-05PB	PVD Brass	1	20
30-05ORB	Oil Rubbed Bronze	1	20
30-06CP	Chrome Plated For Vessels w/ Overflow	1	20

## SPECIALTY DRAINS



Item #	Size	Inner	Master
30-01	1-1/4" Pop-up	1	30
30-02	1-1/4" Grid Drain	1	30
30-03	1-1/4" Off-Set Grid Drain	1	20
30-04	1-1/4" Drain w/ Chain & Stopper	1	30

## E-Z TOOLS

## E-Z REMOVAL TOOLS

### E-Z OUT EXTRACTOR TOOL

- For removing broken pipe, nipples and more.
- Size range 1/4", 3/8", 1/2" & 3/4"



Item #	Size	Inner	Master
EZOUT	1/4" - 3/4"	1	60

### WRENCH FOR SYMMONS TOOL

- Removes diverter cap
- Easy out For diverter removal
- Cold seat wrench
- Hot seat wrench



Item #	Size	Inner	Master
SYMM/TOOL	1/4" - 3/4"	10	60

## REPAIR PLATES FOR SINGLE LEVER SHOWER BODY



## STAINLESS CONVERSION PLATES

Item #	Size	Inner	Master
RP-01	Delta/Moen	10	20
RP-02	Symmons	10	20
RP-03	Symmons Oval	10	20

## COVER TUBE FOR WIRSBO®, PEX & CPVC PIPE



## CP COVER TUBE W/ FLANGES

- Cover tube is designed to go over 1/2" Pex, Wirsbo® and CPVC pipe when used as supply riser to sinks, lavs and toilets
- Cover tube can be cut to cover risers up to 20" long
- Includes 2 styles of escutcheons to choose from - CP brass bell or box

Item #	Size	Inner	Master
CT25	1/2" x 25"	1	18

## ROCM CARRIER CAPS



## CARRIER CAPS

- For wall hung toilets with a 5/8" threaded extension.
- For use on existing closet carriers when a new wall or toilet is put on and the 5/8" threaded rod does not reach the old caps

Item #	Size	Inner	Master
ROCMCAPS	5/8" (4pcs/set)	1	50

## REPAIR FLANGES



## REPAIR FLANGES

Item #	Size	Inner	Master
SSF207	Stainless Steel Spanner Flange Featuring an elongated bolt hole for easier installation	25	100
BFR7900	2" Piece Repair Flange - for ABS/PVC Closet Flanges This 2 piece repair flange replaces a corroded or rusted metal ring on PVC/ABS closet flanges	1	50
DF212	2-1/2" Chrome Deep Flange For use with traps that cover PVC/ABS pipe (over extension piece)	10	250
SFCP-1	3-1/4" wide Oversized Chrome Plated Brass Shower Flange with Set Screw and Wrench; Heavy duty cover-all shower arm	1	10



## SHOWER HEADS, ARMS & FLANGES

### CONTEMPORARY STYLE

- 2.5 GPM
- Strong Flow
- Chrome Plated



Item #	Size	Inner	Master
52-201	1-3/4"	10	50
52-202	2-1/4"	10	40
52-203	3"	1	20

### RAIN 8"

- Heavy gauge solid brass body
- High quality finishes
- 1/2" NPT connection
- Deluge rainfall offers complete immersion
- Flow is generous to allow for complete rinsing



Item #	Size	Inner	Master
RAIN8PC	Polished Chrome	1	4
RAIN8 RB	Oil Rubbed Bronze	1	4
RAIN8BN	Brushed Nickel	1	4
RAIN8SN	Satin Nickel	1	4

### RAIN 9"



Item #	Size	Inner	Master
RAIN12PC	Polished Chrome	1	4
RAIN12BN	Brushed Nickel	1	4

### SUNFLOWER

- Solid 5.5" brass body
- Provides thorough rinsing
- Focused jets greatly improve water pressure
- Convenient removal jets for easy cleaning



Item #	Size	Inner	Master
2701PC	Polished Chrome	1	4
2701-PN	Polished Nickel	1	4
2701ORB	Oil Rubbed Bronze	1	4

### ORCHID 6"

Item #	Size	Inner	Master
2708-PC	Polished Chrome	1	4

### LOTUS 3"

- Solid 3.5" brass body
- Exceptional spray pressure and pattern
- Removable face for ease of cleaning
- Minimal contemporary styling
- Concentrated, firm spray with incredible pressure



Item #	Size	Inner	Master
AD71BN	Brushed Nickel	1	20

### PORCELAIN 6"

Item #	Size	Inner	Master
AD73BN	Brushed Nickel	1	20
AD73ORB	Oil Rubbed Bronze	1	20

### 6" CEILING MOUNT KIT

- Over-sized flange
- Heavy duty arm



Item #	Size	Inner	Master
CMK6PC	Polished Chrome	1	30
CMK6BN	Brushed Nickel	1	30
CMK6PN	Polished Nickel	1	30
CMK6ORB	Oil Rubbed Bronze	1	30
CMK6SN	Satin Nickel	1	30

### 18" MODERN SHOWER ARM

- Over-sized flange
- Heavy duty arm
- Extra long for spacious showers



Item #	Size	Inner	Master
M18PN	Polished Nickel	1	30
M18BN	Brushed Nickel	1	30
M18ORB	Oil Rubbed Bronze	1	30

### 6" SHOWER ARM & 3" FLANGE

- Over-sized flange
- Heavy duty arm



Item #	Size	Inner	Master
SAS6PN	Polished Nickel	1	30
SAS6SN	Satin Nickel	1	30
SAS6BN	Brushed Nickel	1	30
SAS6ORB	Oil Rubbed Bronze	1	30

**DIVERTER TUB SPOUT**

**BALL VALVE TECHNOLOGY**

**NEW  
ELEGANT  
DESIGN**



**TUB SPOUT**

- Patented Item
- Slip fit adapter for easy installation



Item #	Size	Inner	Master
<b>823ZS</b>	1/2" IPS W/ 1/2" Copper Adapter	1	30

**REPAIR HANDLES**

**FOR GERBER & SYMMONS**



Item #	Size	Inner	Master
<b>RHKS</b>	Handle, button & screw for Symmons Temptrol	1	25
<b>GWBH</b>	Gerber Chrome Plated Wrist Blade Handles - Pair	1	25

## JOHNNY BOLTS

### E-Z SNAP™ CLOSET BOLTS

- With plastic grip tite washers to hold bolts upright
- Quick snap-off design; no hacksaw needed



Item #	Size	Inner	Master
JBEZ-14214	1/4" X 2-1/4"	100	200
JBEZ-14312	1/4" X 3-1/2"	100	200
JBEZ-516214	5/16" X 2-1/4"	100	200
JBEZ-516312	5/16" X 3-1/2"	100	200

### CLOSET BOLTS

Item #	Size	Inner	Master
JBCB-14214	1/4" X 2-1/4"	100	200
JBCB-14312	1/4" X 3-1/2"	100	200
JBCB-516214	5/16" X 2-1/4"	100	200
JBCB-516312	5/16" X 3-1/2"	100	200

### ANCHOR KITS IN A JAR

- Drill, use a flat head or phillips screwdriver
- Includes 1/4" masonry drill bit



Item #	Size	Inner	Master
ANCHKITS	1/4" Anchor Kits Quadrive 5/16 head	1	18

## TEFLON TAPE

### MADE IN U.S.A

- For sealing pipe threads
- PTFE Tape compliant with FED Specs T-27730A
- For use on Plastic, Brass, Copper, Aluminum, Galvanized & Black Steel Piping

Item #	Size	Inner	Master
TTD12520	1/2" x 520"	144	500
TTD34260	3/4" x 260"	144	350
TTD34520	3/4" x 520"	144	350
TTD341296	3/4" x 1296"	144	500
TTD1260	1" x 260"	144	500
TTD1520	1" x 520"	144	500

## OPEN WATERPROOF MESH

### COPPER CLEANER



Item #	Size	Inner	Master
OMSC5	5 Yards	1	24
OMSC10	10 Yards	1	24

## TORQUE WRENCH - SCREWDRIVER

### 6 IN 1 SCREWDRIVER

- Includes 2 sizes Phillips head and 2 sizes flat head
- Also includes 2 size torque wrench



Item #	Size	Inner	Master
SCREW61	6 in 1	12	1

### IMPORTED

- For sealing pipe threads
- PTFE Tape compliant with FED Specs T-27730A
- For use on Plastic, Brass, Copper, Alumpinum, Galvanized & Black Steel Piping

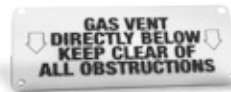
Item #	Size	Inner	Master
810	1/2" x 260"	100	1,000
811	1/2" x 520"	100	1,000
812	3/4" x 260"	100	1,000
813	3/4" x 520"	100	1,000
814	1/2" x 1080"	50	500
815	3/4" x 1080"	144	500

## ACCESORIES FOR GAUGES & TOOLS

### SAFETY SIGNS

- Made of plastic, SIGN#1 & SIGN#2 measure approx 7" W x 3" H
- Text is 1/2" in height for SIGN#1 & SIGN#2
- MASS Ce approved

Item #	Size	Inner	Master
SIGN#1	Warning Gas, Yellow	25	25
SIGN#2	Warning Gas, Clear	25	25
SIGN#3	Exhaust	10	80
SIGN#4	Intake	10	60



NEWSIGNS TO ADD



## GORILLA GLUE



## PVC CEMENT - MEDIUM BODY

- Gorilla PVC cement is known for its impeccable bonding strength.
- Gorilla PVC cement is also:
  - Odorless- Breathe normally with no headaches or illness due to toxic odors
  - Non-flammable
  - No primer required- Save time & Money
  - Eco-Friendly- Low in VOC's

Clear Item #	Purple Item #	Size	Inner	Master
R1583C	R1583P	4 oz.		12
R1584C	R1584P	8 oz.		10
R1585C	R1585P	16 oz.		24
R1586C	R1586P	32 oz.		12

## PVC MALE ADAPTER

### PVC ADAPTER



## RUBBER COUPLING

### 8" LONG



Item #	Size	Inner	Master
PVCMA3	3-1/2" Male X 3" PVC	1	12

Item #	Size	Inner	Master
RAV448	4" x 4"	1	12

**DWV SPECIALTIES**



**DWV  
COPPER  
CONSTRUCTION**

**DWV SPECIALTY P-TRAPS**



**C X C DWV P-TRAPS**

- ASTM B584 Alloy C84400
- ASME B16.23
- Dezincification resistant
- For use with residential & commercial drain, waste & vent systems
- Available with or without cleanout

Item #	Size	Inner	Master
112CCPT/CO	1 1/2" C x 1 1/2" C W/ C-O	10	10
112CCPTLCO	1 1/2" C x 1 1/2" C L/ C-O	10	20
2CCPTRAP/CO	2" C x 2" C W/ C-O	5	10
2CCPTRAPLCO	2" C x 2" C L/ C-O	5	10

**C X SJ DWV P-TRAPS**

Item #	Size	Inner	Master
112C114SJPT/CO	1 1/2" C x 1 1/4" SJ W/ C-O	10	20
112CSJPT/CO	1 1/2" C x 1 1/2" SJ W/ C-O	10	20

**UNION DWV P-TRAPS**

Item #	Size	Inner	Master
112CSJUPTLCO	1 1/2" C x 1 1/2" SJ L/ C-O	10	20
112CCUPTLCO	1 1/2" C x 1 1/2" C L/ C-O	10	20

**COPPER X SLIP JOINT ADAPTERS**

**DESANCO C X SJ NUT ADAPTER**

- Brass construction for strength and durability
- Used to adapt 1-1/2" tubular traps
- 30 PSI maximum working pressure



Item #	Size	Inner	Master
112C112SJD	1-1/2" C x 1-1/2" SJ Desanco/BR nuts	10	60
112C114SJD	1-1/2" C x 1-1/4" SJ Desanco /BR Nuts	10	60

## DWV SPECIALTIES

### REAMED ADAPTERS

- Takes the place of one fitting & one nipple which need to be assembled.
- Connects hot water outlet to 1/2" or 3/4" copper pipe
- These fitting are used on installations of water heaters to make installation time faster with less chance of leaks.



Item #	Size	Inner	Master
LF12C38IPSRA	1/2" C x 3/8" Ips	25	300
LF12C12IPSRA	1/2" C x 1/2" Ips	25	300
LF12C34IPSRA	1/2" C x 3/4" Ips	25	300
LF34C34IPSRA	3/4" C x 3/4" Ips	25	300
LF1C1IPSRA	1" C x 1" Ips	25	300

### FINE THREAD ADAPTERS



Item #	Size	Inner	Master
LF12CFTRA	1/2" C x FT	25	300
LF12CFTMA	1/2" C x FT Male	25	300
LF12CFTFA	1/2" C x FT Female	25	300

### FINE THREAD PLUGS

- These fitting are used on installations of water heaters to make installation time faster with less chance of leaks.



Item #	Size	Inner	Master
LF12MFTP	1/2" M Fine Thread	25	500

### FINE THREAD CAP



Item #	Size	Inner	Master
LF12MFTP	1/2" F Fine Thread	25	200

### ROUND TRAP BUSHINGS



Item #	Size	Inner	Master
112CMRTB	1-1/2" C x M	25	100
2CMRTB	2" C x M	50	100

### HEX TRAP BUSHINGS



Item #	Size	Inner	Master
112CMHTB	1-1/2" C x M	10	100
2CMHTB	2" C x M	10	100

### PRESSURE ADAPTERS



Item #	Size	Inner	Master
112C2MA	1-1/2" C x 2" M	10	60

### NO HUB ADAPTERS



Item #	Size	Inner	Master
2CNHA	2" C	10	100
112C2NHA	2" x 1-1/2" C	10	100

### DWV C X M ADAPTERS



Item #	Size	Inner	Master
112CMA	1-1/2" C x M	10	60

### DANDY CLEAN OUT TEE W/ PLUG



Item #	Size	Inner	Master
112CCDWCO	1-1/2" C	40	40
2CCDWCO	2" C	25	25

### END CLEAN OUT W/ PLUG



Item #	Size	Inner	Master
112CCECO	1-1/2" C	40	40
2CCECO	2" C	25	25

**BASEBOARDS**

**COUPLING X COUPLING BB CONNECTOR**



Item #	Size	Inner	Master
<b>R1644</b>	3/4" x 6"	1	24

**TUBING X TUBING BB CONNECTOR**



Item #	Size	Inner	Master
<b>R1641</b>	3/4" x 18"	1	24

**TUBING X COUPLING BB CONNECTOR**

- Prevents noise from emitting from your baseboard



Item #	Size	Inner	Master
<b>R1643</b>	3/4" x 8"	1	12
<b>R1640</b>	3/4" x 18"	1	24
<b>R1642</b>	3/4" x 18" AC	1	24

**C X F X C BASEBOARD TEES**



Item #	Size	Inner	Master
<b>CFCT1218</b>	1/2" x 1/8" x 1/2"	40	240
<b>CFCT3418</b>	3/4" x 1/8" x 3/4"	25	150
<b>CFCT1181</b>	1" x 1/8" X 1"	25	100
<b>CFCT1418</b>	1 1/4" x 1/8" x 1 1/4"	10	60

**FLOAT VENTS**

- Auto float operated vent
- For use on convector radiators, radiant baseboard & radiant panels
- 50 lb. PSI
- Perfect for tight spaces
- Lead Free



Item #	Size	Inner	Master
<b>LF-FV18</b>	1/8"	10	50

## SPECIALTY TEES

- Lead Free
- Minimize Leak Points
- Tee Descriptions = (end) x (end) x (middle)



### C X C X F TEES

Item #	Size	Inner	Master
CCFT0012-NL	1/2"	30	180
CCFT0034-NL	3/4"	18	108
CCFT0001-NL	1"	10	60
CCFT0114-NL	1-1/4"	1	30

### C X C X F REDUCING TEES

Item #	Size	Inner	Master
CCFT1238-NL	1/2" x 1/2" x 3/8"	25	200
CCFT1234-NL	1/2" x 1/2" x 3/4"	25	200
CCFT1201-NL	1/2" x 3/4" x 3/4"	25	100
CCFT3412-NL	3/4" x 3/4" x 1/2"	20	120
CCFT3401-NL	3/4" x 3/4" x 1"	10	60
CCFT1112-NL	1" x 1" x 1/2"	10	100
CCFT1134-NL	1" x 1" x 3/4"	10	100
CCFT1412-NL	1-1/4" x 1-1/4" x 1/2"	8	48
CCFT1434-NL	1-1/4" x 1-1/4" x 3/4"	8	48
CCFT1141-NL	1-1/4" x 1-1/4" x 1"	1	25
CCFT1212-NL	1-1/2" x 1-1/2" x 1/2"	6	36
CCFT1213-NL	1-1/2" x 1-1/2" x 3/4"	4	48
CCFT1121-NL	1-1/2" x 1-1/2" x 1"	1	25
CCFT2212-NL	2" x 2" x 1/2"	8	16
CCFT2234-NL	2" x 2" x 3/4"	2	24
CCFT0221-NL	2" x 2" x 1"	1	15

### C X F X C TEES

Item #	Size	Inner	Master
CFCT0012-NL	1/2"	36	216
CFCT0034-NL	3/4"	20	120
CFCT0001-NL	1"	10	60

### C X F X C REDUCING TEES

Item #	Size	Inner	Master
CFCT3412-NL	3/4" x 1/2" x 3/4"	20	120
CFCT1121-NL	1" x 1/2" x 1"	10	60
CFCT1344-NL	1" x 3/4" x 3/4"	10	60
CFCT1341-NL	1" x 3/4" x 1"	10	60
CFCT1401-NL	1-1/4" x 1/2" x 1-1/4"	10	40
CFCT1402-NL	1-1/4" x 3/4" x 1-1/4"	10	40
CFCT1501-NL	1-1/2" x 1/2" x 1-1/2"	10	30
CFCT1502-NL	1-1/2" x 3/4" x 1-1/2"	10	30
CFCT2001-NL	2" x 1/2" x 2"	1	20
CFCT2002-NL	2" x 3/4" x 2"	1	20

### F X F X C TEES

- For use with SUPERSTOR® & more
- Indirect Water Heater Tee

Item #	Size	Inner	Master
FFCT1234-NL	3/4"	20	120
FFCT2334-NL	3/4" x 1/2" x 1/2"	25	100
FFCT3434-NL	3/4" x 1/2" x 3/4"	25	100
FFCT1002-NL	3/4" x 3/4" x 1/2"	20	120
FFCT1003-NL	1" x 1/2" x 1"	10	60
FFCT0134-NL	1" x 1/2" x 3/4"	10	60
FFCT1001-NL	1" x 3/4" x 3/4"	10	60
FFCT1401-NL	1" x 3/4" x 1"	10	60
FFCT1501-NL	1-1/4" x 3/4" x 1"	10	15
FFCT1501-NL	1-1/2" x 3/4" x 1"	10	40

### EZ LONG THROAT WATER TEE

- For use with a wide range of gauges



Item #	Size	Inner	Master
LTCF0034-NL	3/4" C x 3/4" C x 3/4" F	10	60
LTCF3412-NL	3/4" C x 3/4" C x 1/2" F	25	100
LTCF1112-NL	1" C x 1" C x 1/2" F	10	40
LTCF1134-NL	1" M x 1" F x 3/4" C	10	60



## EZ WATER HEATER ADAPTERS & TEES

### M LONG X SWT

- Takes the place of one fitting & one nipple which need to be assembled.
- Connects hot water outlet to 1/2" or 3/4" copper pipe
- These fitting are used on installations of water heaters to make installation time faster with less chance of leaks.



Item #	Size	Inner	Master
R1398-NL	3/4" M Long x 1/2" C	10	60
R1399-NL	3/4" M Long x 3/4" C	10	60

### F X F X C EZ LONG BY WATER TEES

- 3/4" Long female end threads directly onto coldwater inlet of water heater
- Tee Descriptions = (end) x (end) x (middle)



Item #	Size	Inner	Master
R1396-NL	3/4" F Long x 1/2" F x 1/2" C	10	60
R1397-NL	3/4" F Long x 1/2" F x 3/4" C	10	60

### M X F X C EZ LONG BY WATER TEES

- 1/2" or 3/4" Female end receives vacuum relief valve and 1/2" or 3/4" C branch to connect cold water supply
- Tee Descriptions = (end) x (end) x (middle)



Item #	Size	Inner	Master
R1394-NL	3/4" M Long x 1/2" F x 1/2" C	10	60
R1395-NL	3/4" M Long x 1/2" F x 3/4" C	10	60

### C X C MONOFLOW TEES

- For use with toe kick heaters, hydronic radiators and hydronic fan convectors



Item #	Size	Inner	Master
MFRT3412	3/4" x 1/2" Swt	25	150
MFRT1012	1" x 1/2" Swt	25	100
MFRT1034	1" x 3/4" Swt	25	100
MFRT1112	1-1/4" x 1/2" Swt	20	80
MFRT1134	1-1/4" x 3/4" Swt	20	80

### C X C SCOOP TEES

- For use with toe kick heaters, hydronic radiators and hydronic fan convectors



Item #	Size	Inner	Master
SCOOP3412	3/4" C x 1/2" C	25	100

### PEX MONOFLOW TEES

- Supplies radiators, convectors, baseboards & kick space heaters
- Features factory installed ends
- Used in one pipe hot water heating systems



Item #	Size	Inner	Master
MFPT0058	5/8" PEX	10	100
MFPS3412	3/4" Pex x 3/4" Pex x 1/2" Swt	10	100
MFPT3412	3/4" Pex x 3/4" Pex x 1/2" Pex	10	100

### WIRSBO® MONOFLOW TEES

- Compatible with WIRSBO® / UPONOR®
- Used in one pipe hot water heating systems
- Features factory installed ends
- Supplies radiators, convectors, baseboards & kick space heaters



Item #	Size	Inner	Master
MFWT3412	3/4" x 3/4" x 1/2" Wirsbo	10	40

## SPECIALTY ADAPTERS

- Dezincification Resistant
- ASTM B584 Alloy C84400
- ASME B16.18
- Lead Free

### C X M ADAPTERS



Item #	Size	Inner	Master
CCMA1234-NL	1/2" C x 3/4" M	25	100
CCMA3412-NL	3/4" C x 1/2" M	25	100
CCMA3410-NL	3/4" C x 1" M	25	200
CCMA3414-NL	3/4" C x 1-1/4" M	15	90
CCMA1114-NL	1" C x 1 1/4" M	10	80
CCMA1034-NL	1" C x 3/4" M	10	100

### C X F ADAPTERS

Item #	Size	Inner	Master
CCFA1234-NL	1/2" C x 3/4" F	25	100
CCFA3412-NL	3/4" C x 1/2" F	25	100
CCFA3414-NL	3/4" C x 1 1/4" F	10	80
CCFA1012-NL	1" C x 1/2" F	25	150
CCFA0400-NL	4" C x F	1	5

### C X C DRAIN COUPLINGS



Item #	Size	Inner	Master
DCWC0012-NL	1/2"	25	300
DCWC0034-NL	3/4"	25	150
DCWC0100-NL	1"	10	100

## SPECIALTY UNIONS

- Dezincification Resistant
- ASTM B584 Alloy C84400
- ASME B16.18
- Lead Free

### C X C UNIONS



Item #	Size	Inner	Master
CCCU0012-NL	1/2"	1	200
CCCU0034-NL	3/4"	1	100
CCCU0100-NL	1"	1	54
CCCU0114-NL	1 1/4"	1	40
CCCU0112-NL	1 1/2"	1	24
CCCU0200-NL	2"	1	12
CCCU0212-NL	2-1/2"	1	8
CCCU0300-NL	3"	1	6

### C X F UNIONS



Item #	Size	Inner	Master
CCFU0012-NL	1/2"	25	200
CCFU0034-NL	3/4"	1	100
CCFU0001-NL	1"	1	54
CCFU0114-NL	1 1/4"	1	40
CCFU0112-NL	1 1/2"	1	24
CCFU0002-NL	2"	1	12

### C X M UNIONS



Item #	Size	Inner	Master
CCMU0012-NL	1/2"	1	200
CCMU0034-NL	3/4"	1	100
CCMU0001-NL	1"	1	54
CCMU0114-NL	1-1/4"	1	40
CCMU0112-NL	1-1/2"	1	40
CCMU0002-NL	2"	1	12
CCMU0212-NL	2-1/2"	1	20

## SPECIALTY 90° ELBOWS

- Dezincification Resistant
- ASTM B584 Alloy C84400
- ASME B16.18
- Lead Free

### C X C 90° ELBOW W/ DRAIN CAP



Item #	Size	Inner	Master
CCDL0120-NL	1/2"	25	300
CCDL0340-NL	3/4"	25	150

### C X F FLANGED SINK 90°



Item #	Size	Inner	Master
CCFE0012-NL	1/2"	25	150

### C X C DROP EAR 90° ELBOW



Item #	Size	Inner	Master
CCDL0012-NL	1/2"	25	350
CCDL0034-NL	3/4"		120
CCDL0001-NL	1"	20	120

### C X F 90° ELBOW



Item #	Size	Inner	Master
CCFL0012-NL	1/2"	40	240
CCFL0034-NL	3/4"	24	144
CCFL0001-NL	1"	25	75
CCFL0114-NL	1 1/4"	10	40
CCFL0112-NL	1 1/2"	1	25
CCFL0002-NL	2"	1	20

Item #	Size	Inner	Master
CCFL1238-NL	1/2" C x 3/8" F	25	200
CCFL1234-NL	1/2" C x 3/4" F	30	180
CCFL3412-NL	3/4" C x 1/2" F	30	180
CCFL1012-NL	1" C x 1/2" F	25	100
CCFL1034-NL	1" C x 3/4" F	25	100

### C X M 90°



Item #	Size	Inner	Master
CMNL0012-NL	1/2"	50	300
CMNL0034-NL	3/4"	30	180
CMNL0001-NL	1"	25	100
CMNL0114-NL	1 1/4"	1	30
CMNL0112-NL	1 1/2"	6	36
CMNL0002-NL	2"	3	18



Item #	Size	Inner	Master
CMNL1234-NL	1/2" C x 3/4" M	25	200
CMNL3412-NL	3/4" C x 1/2" M	25	200

## DROP EAR PRODUCTS

### PEX DROP EAR TEES

- Lead Free
- Patent Pending
- Ideal for use on body sprays
- Also for use on sprinkler heads
- Can be used on expansion tanks
- Used as a purge Tee for draining lines in PEX Systems



Item #	Size	Inner	Master
PXDT0012-NL	1/2" Pex x 1/2" F	25	150
PXDT0034-NL	3/4" Pex x 3/4" F	10	100

### PEX X F DROP EAR 90°

- Dezincification Resistant
- ASTM B584 Alloy C84400
- ASME B16.18
- Lead Free
- Ideal for use on shower arms
- Has 3 drop ear tabs for secure mounting



Item #	Size	Inner	Master
PXDL1238-NL	1/2" Pex x 3/8" F	40	200
PXDL0012-NL	1/2" Pex x 1/2" F	25	150
PXDL0034-NL	3/4" Pex x 3/4" F	25	100

### WIRSBO® DROP EAR TEES

- Can be used on expansion tanks
- Lead Free
- Patent Pending
- Ideal for use on body sprays
- Compatible with WIRSBO® / UPONOR®
- Used as a purge Tee for draining lines in WIRSBO Systems



Item #	Size	Inner	Master
WIDT0012-NL	1/2" Wirsbo x 1/2" F	15	150
WIDT0034-NL	3/4" Wirsbo x 3/4" F	10	100

### C X F DROP EAR 90°



Item #	Size	Inner	Master
CFDL0012-NL	1/2"	45	270
CFDL0034-NL	3/4"	20	120
CFDL0001-NL	1"	20	120

Item #	Size	Inner	Master
CFDL1238-NL	1/2" C X 3/8" F	25	200
CFDL3412-NL	3/4" C X 1/2" F	20	120

Also, check out our other Drop Ear Products.



CPVC x SS 90°



C x C 90° in 1/2", 3/4" & 1"



806V SERIES



806W SERIES



806P SERIES



807V SERIES



807W SERIES



807P SERIES



Ice Maker Valve

## CPVC TRANSITION FITTINGS

- Durable Over Moulded One-Piece
- Pressure Rating 100 PSI at 180°F
- Pressure Rating 150 PSI at 100°F



## LEAD FREE STAINLESS STEEL



Made with Lubrizol licensed FlowGuard Gold CPVC compound. Product manufacturing design, materials & production, all meet or exceed industry standards. IAPMO listed, meeting cUPC, ANSI/NSF/61 and AB1953 standards. Manufactured in ISO 9001 approved facilities.



### BRASS MALE X CPVC ADAPTER



Item #	Size	Inner	Master
<b>BRCPM012-NL</b>	1/2"	16	384
<b>BRCPM034-NL</b>	3/4"	8	240
<b>BRCPM100-NL</b>	1"	6	150
<b>BRCPM114-NL</b>	1 1/4"	4	40
<b>BRCPM112-NL</b>	1 1/2"	4	40
<b>BRCPM200-NL</b>	2"	6	30

### STAINLESS STEEL MALE X ACPVC ADAPTER



Item #	Size	Inner	Master
<b>SSCPM012-NL</b>	1/2"	40	400
<b>SSCPM034-NL</b>	3/4"	30	300
<b>SSCPM100-NL</b>	1"	20	120
<b>SSCPM114-NL</b>	1 1/4"	10	60
<b>SSCPM112-NL</b>	1 1/2"	10	40
<b>SSCPM200-NL</b>	2"	8	32

### BRASS FEMALE X CPVC ADAPTER



Item #	Size	Inner	Master
<b>BRCPF012-NL</b>	1/2"	16	384
<b>BRCPF034-NL</b>	3/4"	8	240
<b>BRCPF100-NL</b>	1"	6	150
<b>BRCPF114-NL</b>	1-1/4"	7	70
<b>BRCPF112-NL</b>	1-1/2"	7	70
<b>BRCPF200-NL</b>	2"	6	30

### STAINLESS STEEL FEMALE X ACPVC ADAPTER



Item #	Size	Inner	Master
<b>SSCPF012-NL</b>	1/2"	40	400
<b>SSCPF034-NL</b>	3/4"	30	300
<b>SSCPF100-NL</b>	1"	20	120
<b>SSCPF114-NL</b>	1-1/4"	10	60
<b>SSCPF112-NL</b>	1-1/2"	10	40
<b>SSCPF200-NL</b>	2"	8	32

### BRASS CPVC DROP EAR ELBOW



Item #	Size	Inner	Master
<b>BRCPD012-NL</b>	1/2"	50	200

### STAINLESS STEEL CPVC DROP EAR ELBOW



Item #	Size	Inner	Master
<b>SSCPD012-NL</b>	1/2"	20	200
<b>SSPD012-NL</b>	1/2"	20	200

## CRIMP TOOL KIT FOR VIEGA® PEX

- Jaws change by merely pressing the 2 side buttons
- One tool with interchangeable jaws for copper crimp rings or Viega® sleeves
- Heavy Duty Tool
- Easy calibration
- Sturdy aluminum case
- Instant jaw installation & releasing
- No special tools needed.

### MATERIALS:

**High Grade Steel**

### CAPACITY:

**3/8", 1/2", 5/8" & 1"**

### ACCESSORIES:

**5 Interchangeable Crimp or Press Dies**



**G/W: 4lbs**

**LENGTH: 15"**

## MULTI-JAW CRIMP TOOL FOR VIEGA® PEX

### STAINLESS STEEL PRESS SLEEVE FOR MJCPT

Item #	Size	Inner	Master
CPTSL38	3/8"	1	5
CPTSL12	1/2"	1	5
CPTSL58	5/8"	1	5
CPTSL34	3/4"	1	5
CPTSL01	1"	1	5

Item #	Size	Inner	Master
MJCPT	3/8" - 1"	1	1

### COP CRIMP JAW FOR MJCPT

Item #	Size	Inner	Master
CPTJAW12	1/2"	1	1
CPTJAW34	3/4"	1	1
CPTJAW01	1"	1	1

## CRIMP RING TOOL KIT 16" - CRTK

- Crimp Tool
- Crimp Gauge
- Adjustable tool
- Extra jaw screws
- Heavy duty Carrying case
- Go-No-Go gauge



Item #	Size	Inner	Master
CRTK16	3/8" - 3/4"	1	5

### JAWS FOR CRTK16

Item #	Size	Inner	Master
CRTK1638	3/8"	1	1
CRTK1612	1/2"	1	1
CRTK1658	5/8"	1	1
CRTK1634	3/4"	1	1

## CRIMP RING TOOL KIT 19" - CRTK19

- Crimp Tool
- Crimp Gauge
- Adjustable tool
- Extra jaw screws
- Heavy duty Carrying case
- Go-No-Go gauge



Item #	Size	Inner	Master
CRTK19	3/8" - 1"	1	5

### JAWS FOR CRTK19

Item #	Size	Inner	Master
CRTK1938	3/8"	1	1
CRTK1912	1/2"	1	1
CRTK1958	5/8"	1	1
CRTK1934	3/4"	1	1
CRTK1901	1"	1	1

## CRIMPING TOOLS

### PEX CRIMP TOOLS

- Works with Nibco®, Watts®, Zurn® and all Oetiker® style clamps
- Made of high grade steel



Item #	Size	Inner	Master
<b>PCT</b>	3/8" - 3/4"	1	60
<b>PCTHD</b>	3/8" - 1" Heavy Duty	1	1

### ANGLE HEAD CRIMP TOOLS

- Allows for easy installation in tight spaces
- Conform to ASTM F2098 standard.



Item #	Size	Inner	Master
<b>CTAH012</b>	1/2"	1	20
<b>CTAH034</b>	3/4"	1	20

### CRIMP & CUT TOOLS

- Heavy Duty
- Made of high grade steel
- One tool with dual functionality
- Allows for crimp & removal

Item #	Size	Inner	Master
<b>PCTHDC</b>	3/8" - 1"	1	1

### PEX RING REMOVAL TOOL

- Remove pex rings with ease with our new Pex ring removal tool



Item #	Size	Inner	Master
<b>PRRT1203</b>	1/2" - 1"	1	50

## LARGE VARIETY OF CRIMPING TOOLS

### DUAL JAW CRIMP TOOLS

- Has straight & side jaws
- Side jaw for use in tight spaces



Item #	Size	Inner	Master
<b>PCTDJ</b>	3/8" - 1"	1	1

### HEAVY DUTY COMPOSITE HANDLE

- Meets ASTM F1807 standard.
- Factory tuned
- Go-No-Go gauge included.



Item #	Size	Inner	Master
<b>R1658</b>	1/2" & 3/4"	1	10
<b>R1659</b>	1/2"	1	10
<b>R1660</b>	3/4"	1	10
<b>R1661</b>	1"	1	10

### ONE HAND OPERATED CINCH TOOL

- Conforms to ASTM F2098 standard.
- Factory tuned.
- LED light for confirmation.



Item #	Size	Inner	Master
<b>CINCH</b>	One Hand	1	24

### GO-NO-GO GAUGE

Item #	Size	Inner	Master
<b>GNGG5</b>	5 Sizes	1	1

## OTEIKER® PEX GRIP CLAMPS

- Preset to prevent clamp from sliding
- Grips tube for easy installation
- Requires only one installation tool for all clamp sizes
- 360 Stepless design



Efficient. Reliable. Secure.



## OTEIKER® STAINLESS STEEL CRIMP RINGS

- OTEIKER® crimp rings
- Sold in bag quantity only

Item #	Size	Inner	Master
OTCR0038	3/8"	100	4,000
OTCR0012	1/2"	100	2,000
OTCR0058	5/8"	50	2,500
OTCR0034	3/4"	50	2,000
OTCR0100	1"	50	1,300

## OTEIKER® PEX CLAMPS

- OTEIKER®
- For use with IPS Poly Pipe
- Economical & easy to install
- 100 PSI rating
- Sold in bag quantity only

Item #	Size	Inner	Master
PPC38	3/8"	100	2,000
PPC34	3/4"	100	2,000
PPC1	1"	50	1,300

## PIPE CUTTERS

### PEX SCISSOR SHEAR CUTTER

- For use in cutting pex tubing 3/8" - 1"
- Light weight
- Fast cutting
- Grip design for secure hold
- Stainless steel blade
- Spring loaded for quick opening/fast cutting



Item #	Size	Inner	Master
PSSC	3/8" - 1"	10	60

## FOR PEX AND PVC PIPE

### MULTI-PURPOSE PIPE CUTTER

- Cuts PVC pipe, irrigation pipe, fuel line and heater hoses
- Provides a straight, even cut on any plastic or rubber hose up to 1-1/8"
- Tempered steel blade
- Metal housing
- PVC coated handles w/ handle lock
- Spring operated



Item #	Size	Inner	Master
MPPC	Up To 1-1/8"	1	5

## INSIDE PIPE CUTTER

- Easily cuts PVC & ABS
- Cuts from the inside
- Secures tightly into drill



Item #	Size	Inner	Master
INPC	2 Heavy duty Blades w/ Hex Drill Bit	24	96
INPC-BLADE	5 Blades for INPC	5	5



## GAS TESTER KITS

### GAS TESTER & PRESSURE KIT

#### COMBINATION OF OUR GTK & PTK SHOWCASED BELOW

- 3 - 1818 MxF ball valve shut offs
- Ball & barbed adapter
- Bulb & hose assembly
- Includes heavy duty case
- Snifter valve
- Swivel hose connector
- Protective black case
- 3/4"m x 1/2" f x 1/8" f x 1/4" f x 1/4" f double test tee



Item #	Size	Inner	Master
<b>GPTK</b>	7 lb. & 160 lb. Combo Gauges	1	1

### GAS TESTER KIT

- 1818 MxF ball valve shut off
- Ball & barbed adapter
- Bulb & hose assembly
- Includes heavy duty case
- 3/4"m x 1/2" f x 1/8" f x 1/4" f long body tee



Item #	Size	Inner	Master
<b>GTK</b>	5 LB. KIT	1	1

### PRESSURE TEST KIT

- Test tee
- Snifter valve
- Swivel hose connector
- 160 # Gauge



Item #	Size	Inner	Master
<b>PTK</b>	0-160 lb Gauge	1	1

### GAUGE ONLY



Item #	Size	Inner	Master
<b>GTG-7</b>	7 lb. Gauge	1	1
<b>GTG-5</b>	5 lb.	1	1

### PRESSURE & GAS TEST TEES



Item #	Size	Inner	Master
<b>LBTE3111</b>	3/4" M x 1/2" F x 1/8" F x 1/4" F	25	100
<b>LBDT3112</b>	3/4" M x 1/2" F x 1/8" F x 1/4" F x 1/4" F	20	180

### BULB HOSE & ASSEMBLY ONLY

Item #	Size	Inner	Master
<b>BHA</b>	For GTK	1	1



## THERMOMETERS

### HOT WATER THERMOMETER

- Economical & accurate way to measure air or water temperatures
- Ideal for many general heating applications
- Comes with removable IPS/SWT Well
- Lead Free



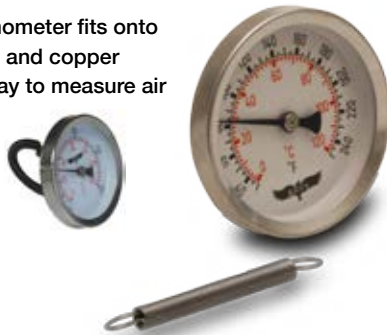
IPS Well Item #	SWT Well Item #	Size	Inner	Master
<b>LFRAVWHT</b>	<b>LFRAVWHTC</b>	THERMOMETER W/ WELL	1	1
<b>LFWELL-IPS</b>	<b>LFWELL-COPPER</b>	WELL ONLY	1	25



Item #	Size	Inner	Master
<b>LFRAVWHTIPS</b>	THERMOMETER W/ IPS & SWT	1	50

### STRAP- ON THERMOME-

- Adjustable strap on thermometer fits onto various size pipes, plastic and copper
- Economical & accurate way to measure air or water temperatures



Item #	Size	Inner	Master
<b>SORAVWHT-1</b>	30°-250° F	1	100

### E-Z TRIALTIMETER

- Temperature range 30°-250°
- Pressure range 0-60 PSI
- Connection 1/4" NPT



Item #	Size	Inner	Master
<b>EZ-TRISTD</b>	Short Shank 1/4" NPT	6	50
<b>EZ-TRILONG</b>	Long Shank 1/4" NPT	6	50

## FACE PRESSURE GAUGES

used to measure pressure of gas or liquid inside a vessel

### 2" DRY GAUGES

- 1/4 NPT male threaded lower mount
- 2" display
- Comes with polycarbonate crystal
- Operating temperatures range -40° to 150°



Item #	Size	Inner	Master
<b>PG230</b>	30#	1	25
<b>PG260</b>	60#	1	25
<b>PG2100</b>	100#	1	25
<b>PG2160</b>	160#	1	25
<b>PG2200</b>	200#	1	25
<b>PG2300</b>	300#	1	25

### 2-1/2" DRY GAUGES

- 1/4 NPT male threaded lower mount
- 2-1/2" display
- Comes with polycarbonate crystal
- Operating temperatures range -40° to 150°

Item #	Size	Inner	Master
<b>PG15</b>	15#	1	1
<b>PG30</b>	30#	1	1
<b>PG60</b>	60#	1	1
<b>PG100</b>	100#	1	1
<b>PG160</b>	160#	1	1

### 2-1/2" LIQUID FILLED GAUGES

- Glycerin filled circular dial
- 2-1/2" display With stainless Steel case
- Operating temperatures range -40° to 150°

Item #	Size	Inner	Master
<b>PG2.515</b>	15#	1	25
<b>PG2.530</b>	30#	1	25
<b>PG2.560</b>	60#	1	25
<b>PG2.5100</b>	100#	1	25
<b>PG2.5160</b>	160#	1	25
<b>PG2.5200</b>	200#	1	25
<b>PG2.5300</b>	300#	1	25

**RAVEN**<sup>™</sup>  
SPECIALTY PRODUCTS

40

YEARS  
OF  
QUALITY  
&  
INNOVATION



... AND COUNTING

