

FW SYDNEY 6032

DESIGNER COLLECTION | FERGUSON PROMO MODEL

H | S

PVC SYSTEMS INCLUDE:

- 6 Fully directional adjustable PVC jets
- Anti-vortex safety suction
- Color matched system trim
- Rigid PVC piping
- Self draining pump and system
- "Soft Touch" electronic on/off control
- 2.25 HP single speed pump
- Requires 120 V 20 Amp Dedicated GFCI



Featuring sharp, Zen lines and a seamless molded skirt, the Sydney is a tub that compliments a variety of modern designs. With standard molded tile flanges, it is as easy to install as it is to design around. Visit <http://www.hydrosystem.com> for more details on our options and accessories.

FW SYDNEY 6032-20

H|S

DESIGNER COLLECTION | FERGUSON PROMO MODEL

As SHOWN:

Whirlpool option with standard jet location

FEATURES SHOWN:

- Jets
- Overflow (not included)

AVAILABLE SYSTEMS:

- Soaking tub only
- Whirlpool
- Thermal Air
 - Approx 30 injections
- Combo

WATER CAPACITY:

63 Gallons

WEIGHT:

90 - 130 Pounds

MODEL 6032 DIMENSIONS:

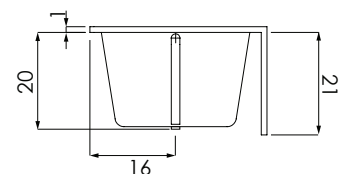
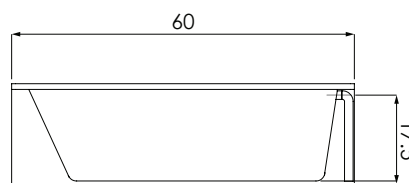
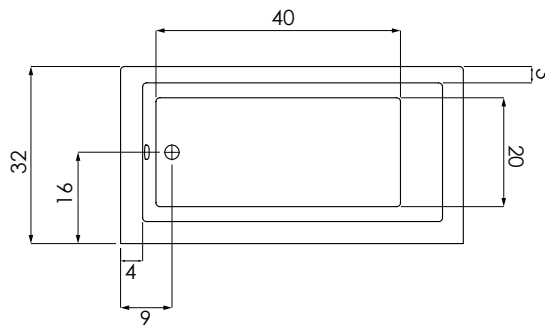
- (L)ength- 60"
- (W)idth- 32"
- (H)eight Finish- 21"
- (D)epth- 20

FRAMING SPECIFICATIONS:

- Opening Length- 60"
- Opening Width- 32"
- Ledger- 20.5"

ACRYLIC TUB

- Extra thick reinforced fiberglass
- Pre-wired pump on pump platform (standard pump location only)
- Integral E-Z level platform facilitates installation
- Tub must be set in a mortar base



CODES AND COMPLIANCES

Massachusetts code File no: P1-0614-491



HYDRO SYSTEMS
Family Owned And Operated Since 1978

29132 Avenue Paine, Valencia, CA, 91355
661.775.0686 | hydrosystem.com