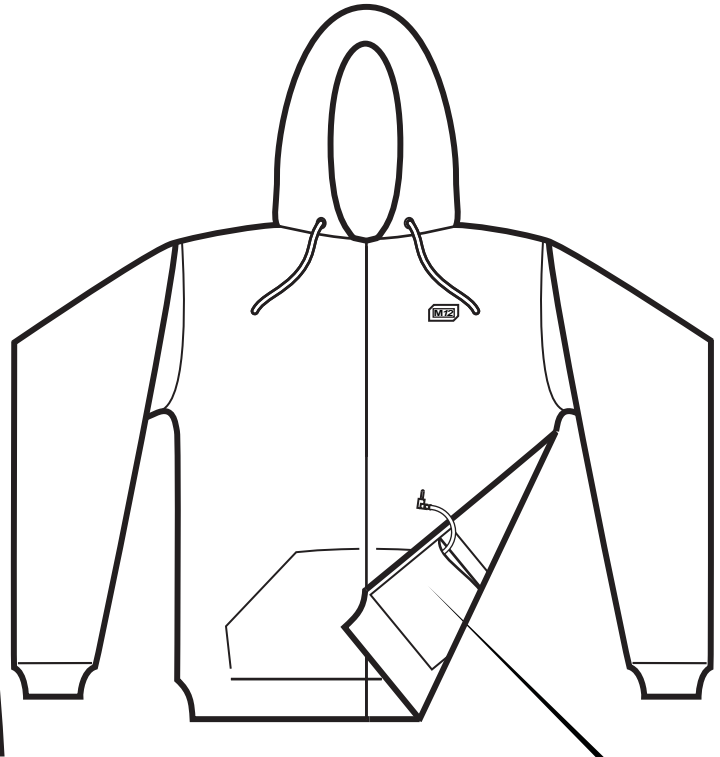
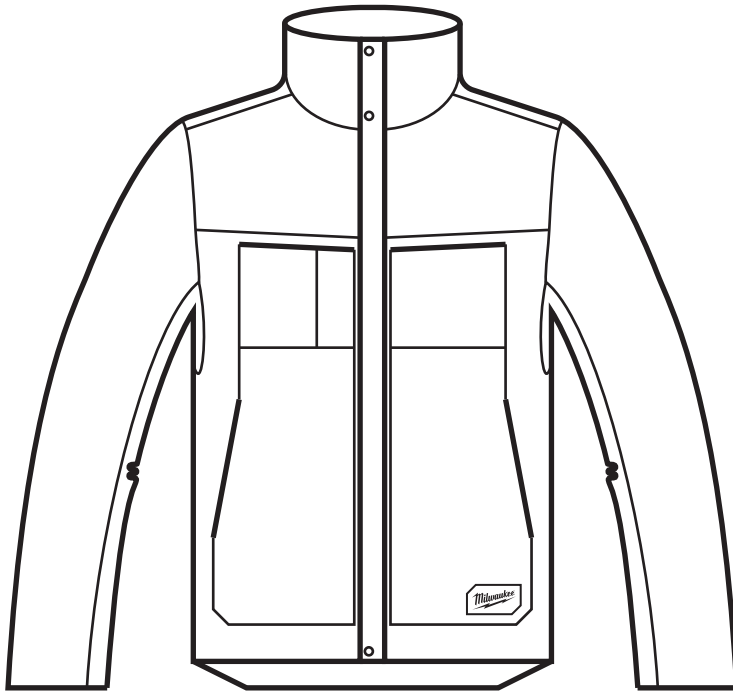




SERVICE PARTS LIST

BULLETIN NO.
54-07-2435

SPECIFY CATALOG NO. AND SERIAL NO. WHEN ORDERING PARTS		REVISED BULLETIN	DATE
3 in 1 JACKET: Jacket with M12™ Heated Hoodie			May 2015
CATALOG NO.	Bare Tool: 2170S, 2170M, 2170L, 2170XL, 21702X, 21703X Kit: 2171S, 2171M, 2171L, 2171XL, 21712X, 21713X		



M12™ Heated 3 in 1 Jacket Only-

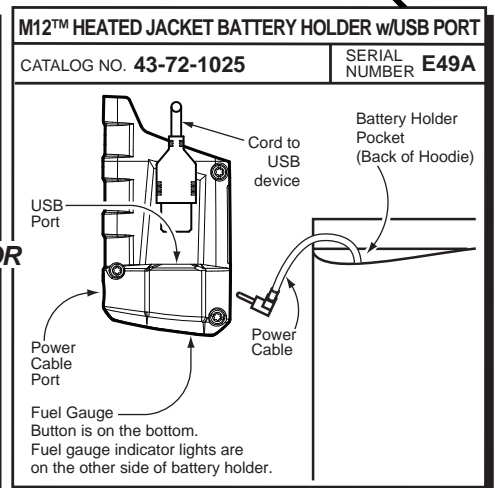
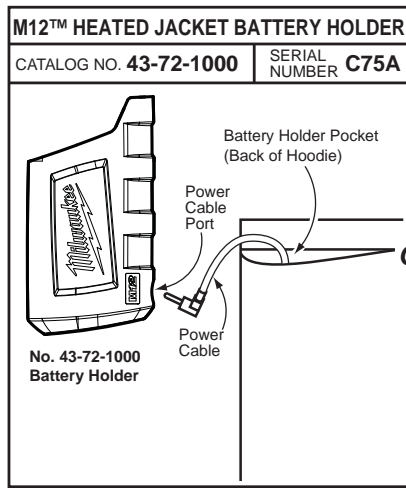
- 2170S** M12™ Heated 3 in 1 Jacket - Small
2170M M12™ Heated 3 in 1 Jacket - Medium
2170L M12™ Heated 3 in 1 Jacket - Large
2170XL M12™ Heated 3 in 1 Jacket - Extra Large
21702X M12™ Heated 3 in 1 Jacket - Extra Large (2X)
21703X M12™ Heated 3 in 1 Jacket - Extra Large (3X)

M12™ Heated 3 in 1 Jacket Kit-

- 2171S** M12™ Heated 3 in 1 Jacket - Small
2171M M12™ Heated 3 in 1 Jacket - Medium
2171L M12™ Heated 3 in 1 Jacket - Large
2171XL M12™ Heated 3 in 1 Jacket - Extra Large
21712X M12™ Heated 3 in 1 Jacket - Extra Large (2X)
21713X M12™ Heated 3 in 1 Jacket - Extra Large (3X)

NOTE:

Both the Compact M12 battery pack and XC M12 battery pack can be used in the two battery holders. Both battery holders are interchangeable with all jackets, hoodies and vests. Kit versions of the 3 in 1 jackets come with the 43-72-1025 battery holder.



43-72-1000 Battery Holder

FIG.	PART NO.	DESCRIPTION OF PART	NO. REQ.
1	43-72-1000	Battery Holder	(1)
2	12-20-2330	Service Nameplate - Battery Holder	(1)
3	10-20-2318	Warning Label - Battery Holder	(1)

43-72-1025 Battery Holder

FIG.	PART NO.	DESCRIPTION OF PART	NO. REQ.
1	43-72-1025	Battery Holder	(1)
2	12-20-1025	Service Nameplate - Battery Holder	(1)
3	10-20-1028	Warning Label - Battery Holder	(1)

FIG. 2, 3 NOTES

A clean, dry surface is essential for proper performance for any adhesive system. The area intended for application of any adhesive label or nameplate must be prepared by cleaning with isopropyl alcohol. The solvent is to be applied with a clean, lint free applicator and the surface allowed to dry before applying the label or nameplate.

MILWAUKEE ELECTRIC TOOL CORPORATION
13135 W. LISBON RD., BROOKFIELD, WI 53005

Drwg. 1