

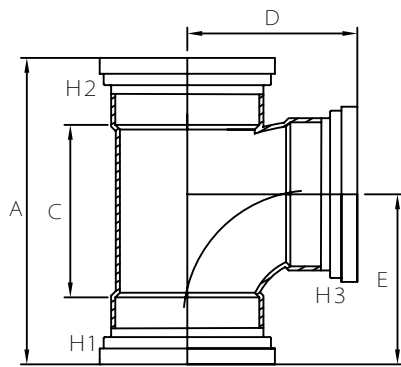


TI FITTINGS

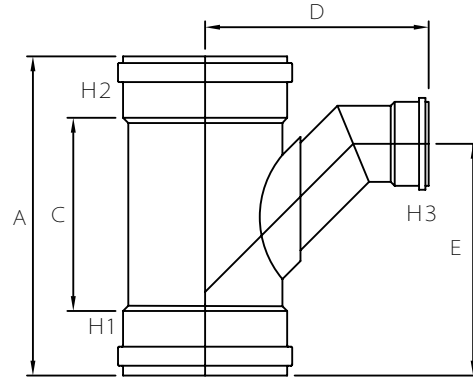
LAYING LENGTH

ISSUE DATE: OCT 30/17
SUPERCEDES: SEPT 14/07

TEE WYE (GxGxG)



INJECTION MOLDED FITTING (M)



FABRICATED FITTING (F)

	SIZE H1xH2xH3	PART NUMBER	A REF	C REF	D REF	E REF
>M =	4x4x4	067104	11.125	6.000	6.125	6.750
M =	6x6x4	067126	11.750	5.875	6.500	6.875
M =	6x6x6	067106	14.625	8.750	8.250	9.000
M =	8x8x4	067128	12.625	5.875	7.000	6.875
M =	8x8x6	067148	15.250	8.375	8.500	8.625
P	8x8x8	067108	-	-	-	-
>M =	10x10x4	167130	17.125	9.375	8.875	9.875
M =	10x10x6	167150	17.125	9.375	10.000	9.875
F @	10x10x8	067151	36.000	-	20.500	22.000
F @	10x10x10	067110	36.000	-	22.000	22.000
>M =	12x12x4	167153	18.125	9.250	9.875	10.500
M =	12x12x6	167152	18.125	9.250	11.125	10.500
F @	12x12x8	067154	36.000	-	24.000	23.000
F @	12x12x12	067066	-	-	-	-
F @	15x15x4	067155	39.000	-	18.000	22.500
F @	15x15x6	067156	39.000	-	25.000	21.000
F @	15x15x8	067157	39.000	-	21.500	21.000
F @	18x18x4	067158	43.000	-	23.000	29.000
F @	18x18x6	067159	43.000	-	23.000	26.000
F @	18x18x8	067160	-	-	-	-

Note: = Refer to Page HW4 for Hub Detail, Type A
 @ Refer to Page HW5 for Hub Detail, Fabricated
 <> 4" Deep hub