

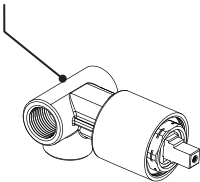
ASSEMBLY INSTRUCTION**1JHOL****WALL MOUNT SINGLE CONTROL LAVATORY SET****1JHOL****REMOVAL OF FAUCET:**

Always turn the water supply off before removing the existing faucet or disassembling a valve. Open both faucet handles to relieve water pressure and to ensure that the water has been successfully turned off.

CARE OF FAUCET:

The use of warm water and a soft cloth is all that is required to clean Rubinet products. The patina of our living finishes (Oil Rubbed Bronze & Tuscan Brass) will change as a result of normal use. Applying Mineral Oil on occasion will create a softer look, subtle color changes and character.

1JR000
Wall Mount Single Control
Lavatory Rough-in



9YVLVPL1B
Sleeve



9YPRBPL3A
Stopper



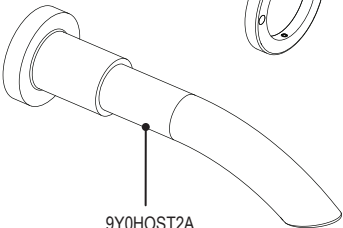
9Y0LASK3E
Flange



HHO20
Handle



Spout
Ring

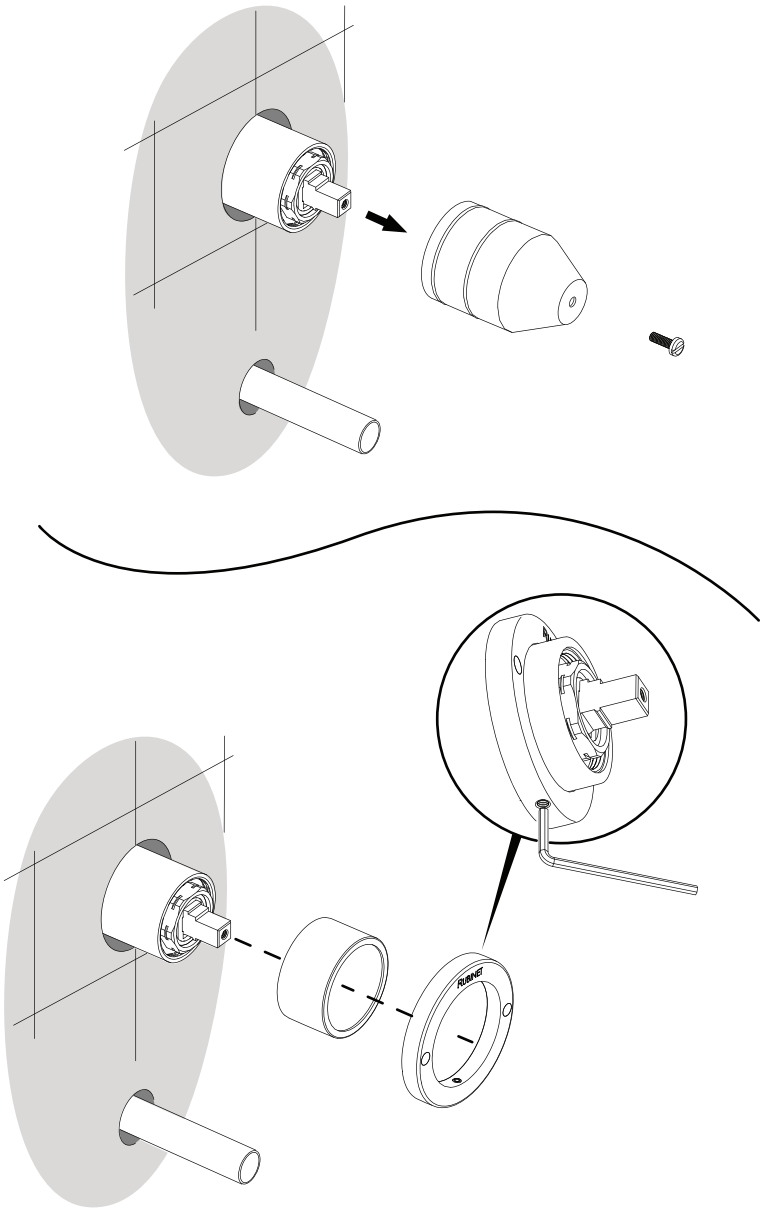


9Y0HOST2A
Spout

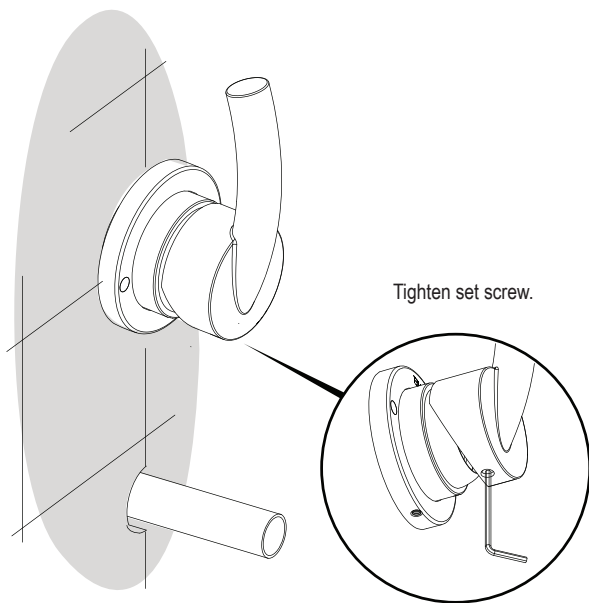
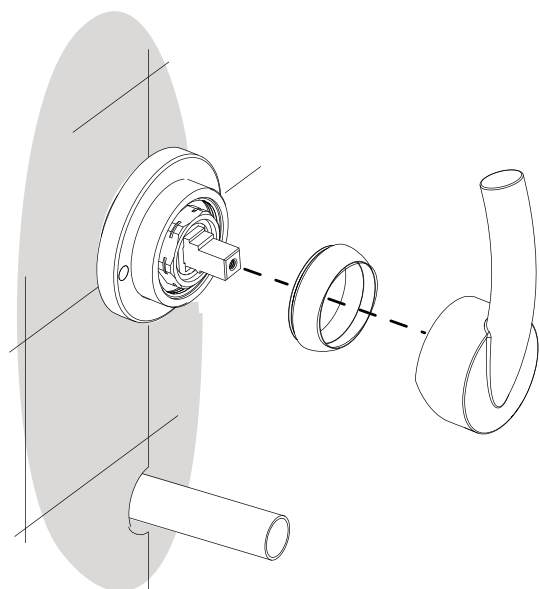


9YAERSW3A
Aerator

1

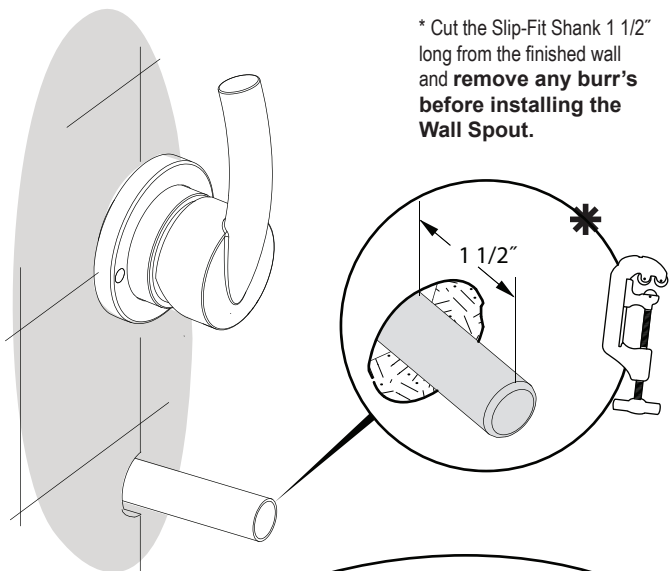


2

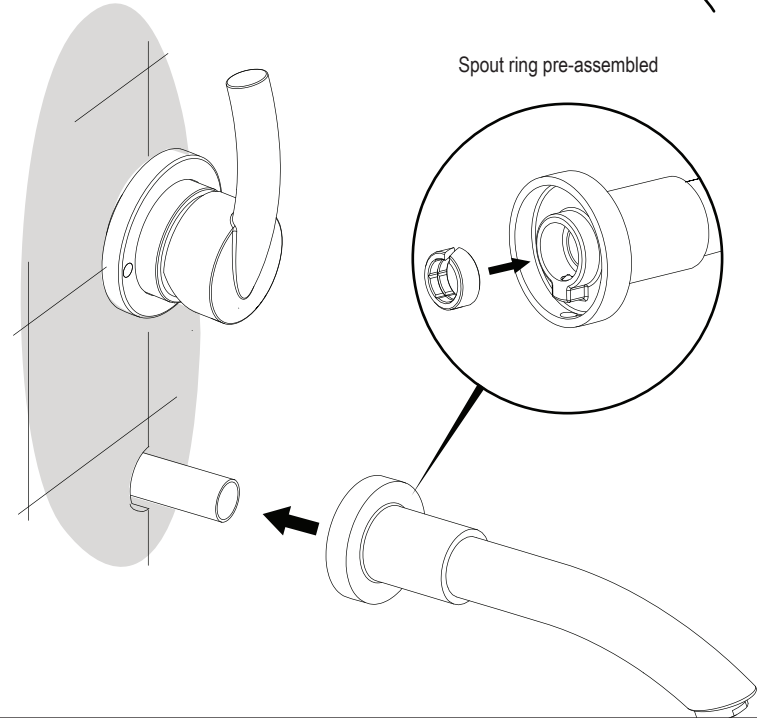


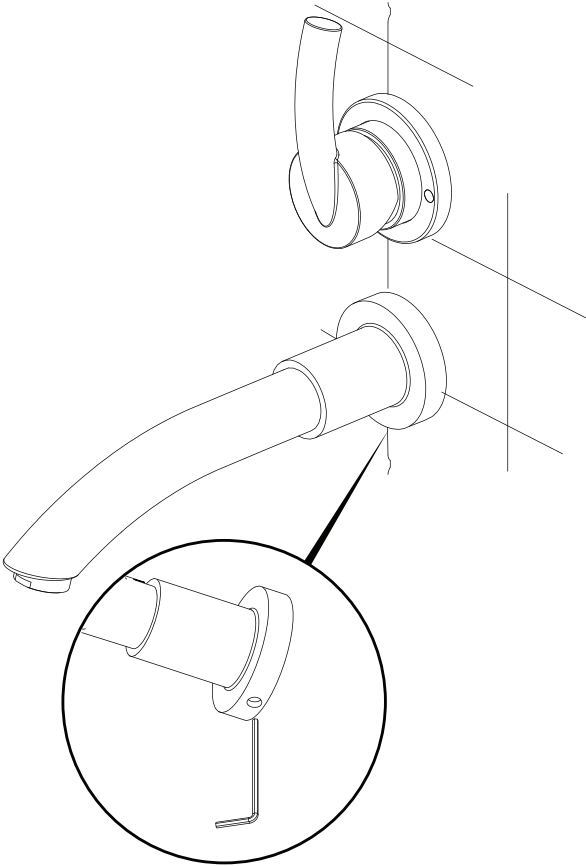
3

* Cut the Slip-Fit Shank 1 1/2" long from the finished wall and **remove any burr's** before installing the Wall Spout.



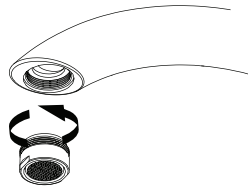
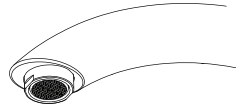
Spout ring pre-assembled





Tighten set screw.

AERATOR REMOVAL



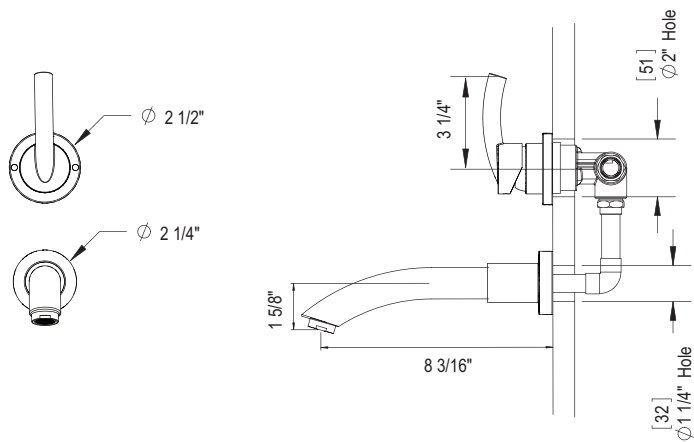
Turn counter-clock wise to unscrew.

FEATURES:

- Brass construction with choice of 21 finishes
- Single Control lever handle:
- One-Piece, ceramic disc cartridge allows both volume and temperature control
- 1.2 gpm @ 50 psi (Helps meet CalGreen regulation)

APPROVAL:

- AB1953 / NSF61
- ASME A 112.18.1
- CSA B125.1



CONTACT US:

If you need assistance with installation, replacement parts or have any questions regarding your Rubinet product, please call a Customer Service representative at: 905-851-6781 toll free 1-800-461-5901 or visit www.rubinet.com