



Z1231-EZ

CONCEALED ARM SYSTEM

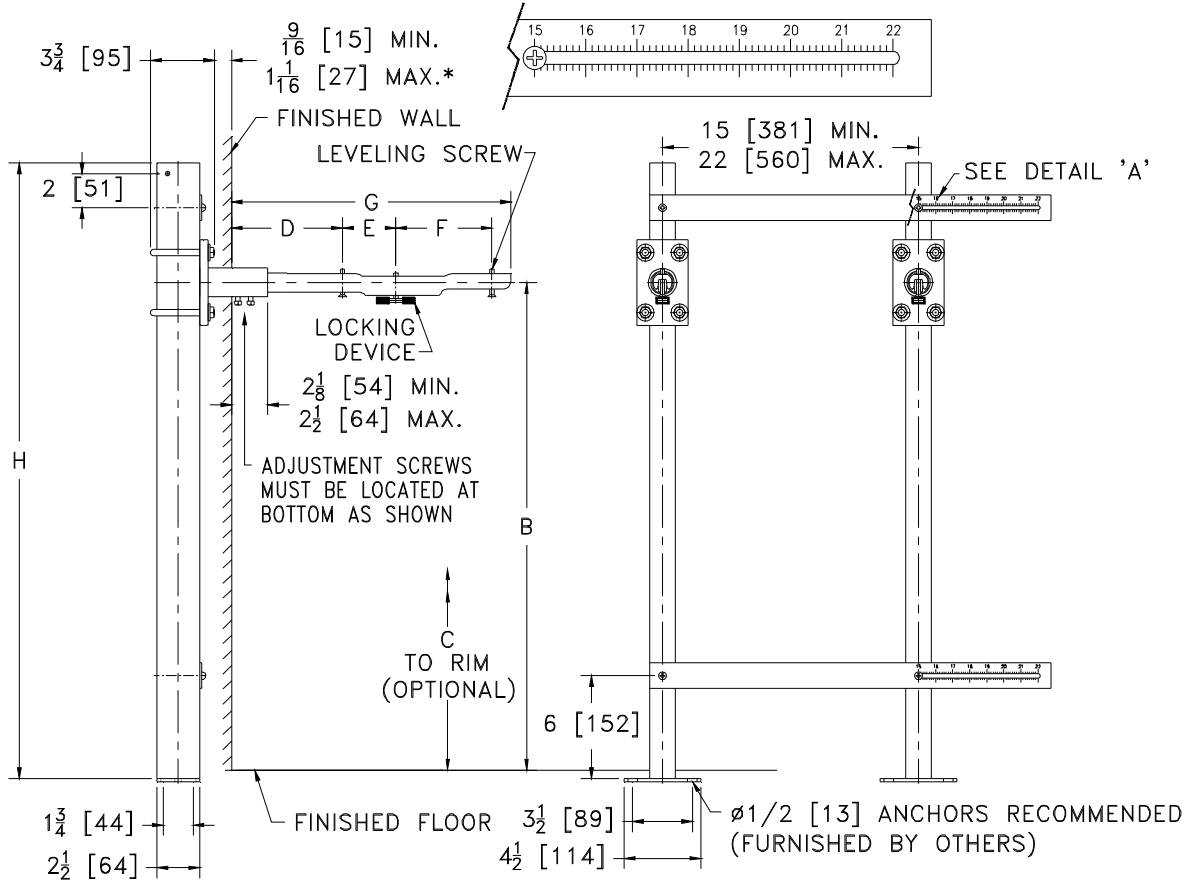
WALL LAVATORIES

SPECIFICATION SHEET

TAG _____

Dimensional Data (inches and [mm]) are Subject to Manufacturing Tolerances and Change Without Notice

DETAIL 'A' 3X SCALE



*WITH STANDARD SLEEVE LENGTH OF 4 [102]

Product No.	Approx. Wt. Lbs. [kg]
Z1231-EZ	45 [20]

ENGINEERING SPECIFICATION: ZURN Z1231-EZ Lavatory support system with concealed arms. Complete with Dura-Coated rectangular steel uprights with welded feet, cast iron adjustable headers, concealed arms, steel sleeves, adjusting bars, and mounting fasteners.

OPTIONS (Check/specify appropriate options)

PREFIXES

___ Z Dura-Coated System with Concealed Arms*

SUFFIXES

- ___ -AL Adapter Lug
- ___ -CB Carrier Bank
- ___ -CU Floor to Ceiling Upright (Specify Height Required)
- ___ -D Back to Back System
- ___ -E2 Concealed Arm Escutcheons 2 [51] Long
- ___ -E4 Concealed Arm Escutcheons 4 [102] Long
- ___ -E6 Concealed Arm Escutcheons 6 [152] Long
- ___ -SL Sleeve Length Over 4 [102] (Specify Length)
- ___ -WS Wall Support Valve Plate (Specify Valve Name and Number)
- ___ -79 Paraplegic Rough-in

*REGULARLY FURNISHED UNLESS OTHERWISE SPECIFIED

Note: Dimensional data for letter dimensions depends upon fixture type and manufacturer. See Zurn Carrier/Fixture Rough-In information at www.zurn.com for specific rough-in dimensions

REV. A	DATE: 11/30/10	C.N. NO. 120584
DWG. NO. 67342	PRODUCT NO. Z1231-EZ	