








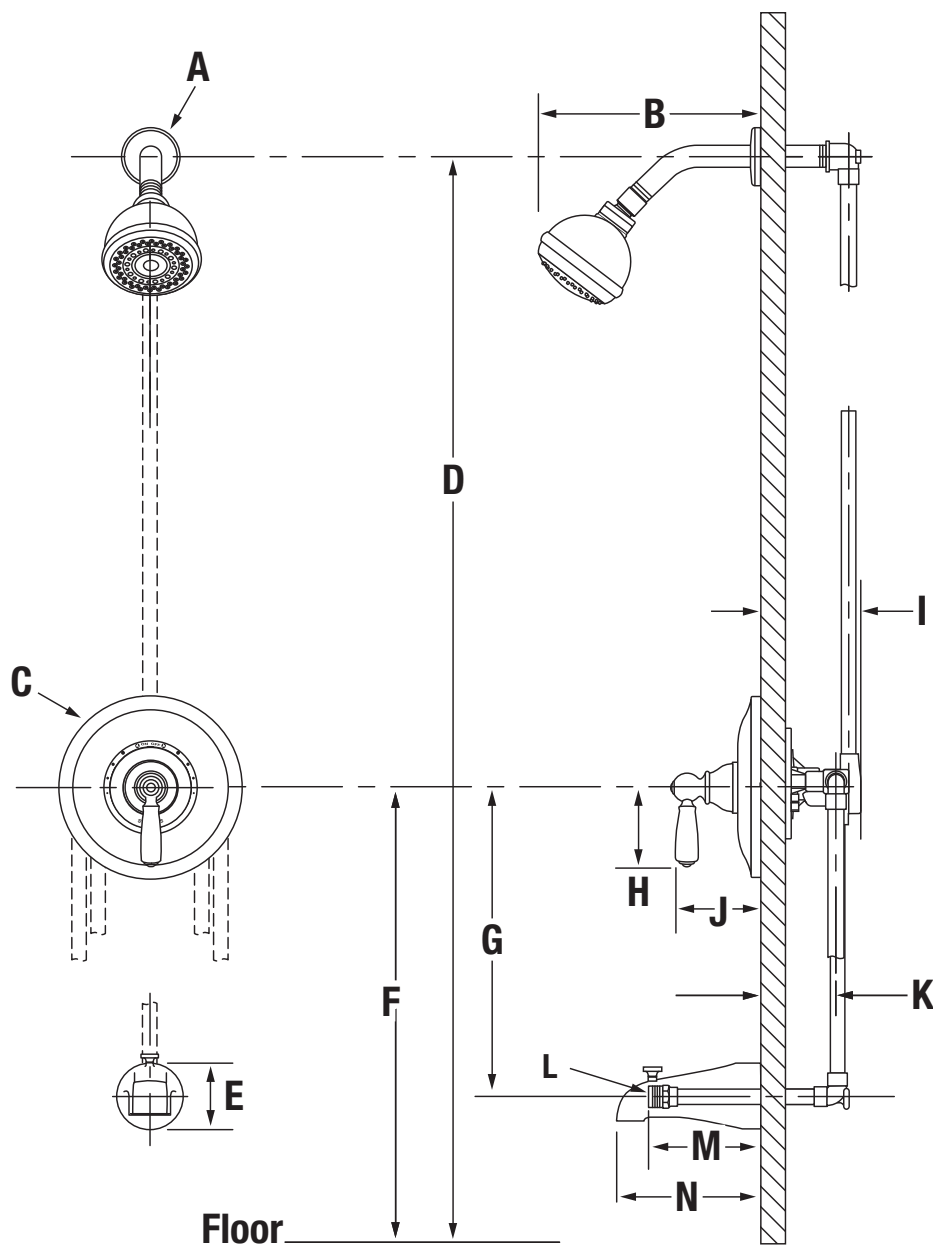
4700-TRM, 4701-TRM, 4702-TRM
Allura® Trim Series
Operation & Maintenance Manual



Model Numbers	Specification
<div> <input type="checkbox"/> 4700-TRM <i>Valve Trim</i> </div> <div> <input type="checkbox"/> 4701-TRM <i>Shower Trim</i> </div> <div> <input type="checkbox"/> 4702-TRM <i>Tub/Shower Trim</i> </div>	<p>Tub/shower trim with lever handle includes diverter tub spout and 3 mode showerhead with standard 2.5 gpm (9.5 L/min) flow restrictor. Shower trim with lever handle includes all of the above less diverter tub spout. Valve trim with lever handle includes valve trim only. Components made from metal and nonmetallic materials plated in standard polished chrome finish.</p> <div>   </div>
Options/Modifications	Compliance
<div> <input type="checkbox"/>  -1.5 <i>1.5 gpm (5.7 L/min) flow restrictor</i> </div> <div> <input type="checkbox"/>  -2.0 <i>2.0 gpm (7.6 L/min) flow restrictor</i> </div> <div> <input type="checkbox"/> -LAM <i>Metal finish insert handle</i> </div> <div> <input type="checkbox"/> -LR <i>Lever handle</i> </div> <div> <input type="checkbox"/> -SS <i>Slip spout on any tub and shower unit</i> </div> <div> <input type="checkbox"/> -STN <i>Satin Nickel finish</i> </div>	<p>-ASME A112.18.1; CSA B125.1</p> <div>  </div>
	<p>Warranty</p> <p>Limited Lifetime - to the original end purchaser in consumer/residential installations. 5 Years - for industrial/commercial installations.</p> <p>Refer to www.symmons.com/warranty for complete warranty information.</p>

Note: Append appropriate -suffix to model number.

Dimensions

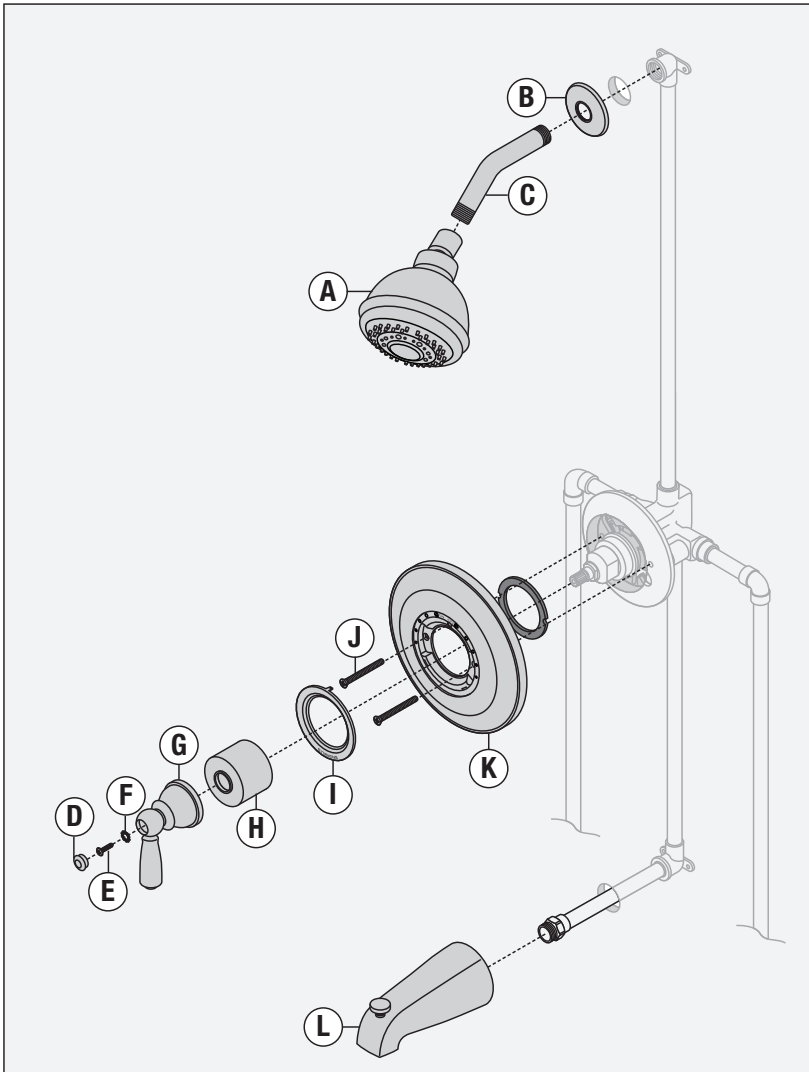


Measurements	
A	Ø 2 1/2", 64 mm
B	6 3/4", 172 mm
C	Ø 7", 178 mm
D	Ref. 77", 1956 mm
E	2 1/2", 64 mm
F	Ref. 32", 813 mm (4702-TRM) Ref. 42", 1067 mm (4700-TRM, 4701-TRM)
G	12", 305 mm
H	3 1/8", 79 mm
I	3 1/2", 89 mm
J	4", 102 mm
K	Rough-in 2 3/8" ± 1/2", 60 mm ± 13 mm
L	1/2" NPT
M	4", 102 mm
N	5 1/4", 133 mm

Notes:

- 1) All dimensions measured from nominal rough-in (see K as reference).
- 2) Dimensions subject to change without notice.

Parts Breakdown



***Note:** Apply a bead of silicone around the perimeter of the escutcheon after installing trim flush with wall. Leave opening on bottom of escutcheon for weep hole.


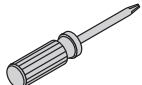

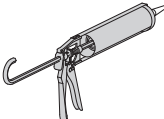
Replacement Parts

Item	Description	Part Number
A	Showerhead	4-143
B	Flange	430SS
C	Shower Arm (flange included)	300S
D	Plug Button	RTS-026
E	Handle Screw	
F	Star Washer	
G	Handle	
H	Dome Cover	T-19
I	Dial	T-133C
J	Mounting Screws	
K*	Shower Escutcheon	
L	Diverter Tub Spout	054

Notes:

- 1) Append -STN to part number for Satin Nickel finish.
- 2) Append -1.5 or -2.0 to showerhead for low flow.

Tools Required for Installation

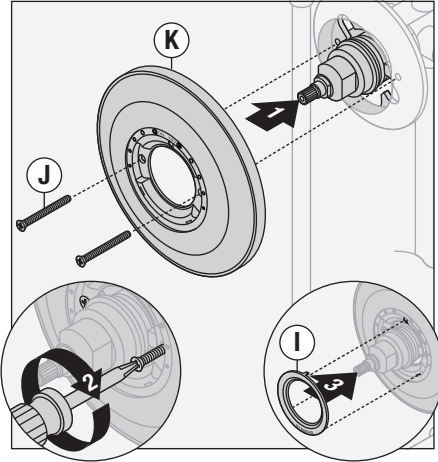
Adjustable wrench	
Phillips head screwdriver	
Plumber tape	
Silicone	

Installation

Note:

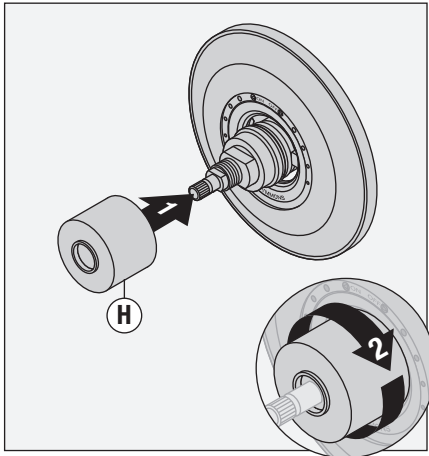
For valve body installation, please see valve body manual.

- 1) Install escutcheon (K) to shower valve. Secure with two screws (J). Snap dial (I) into escutcheon.

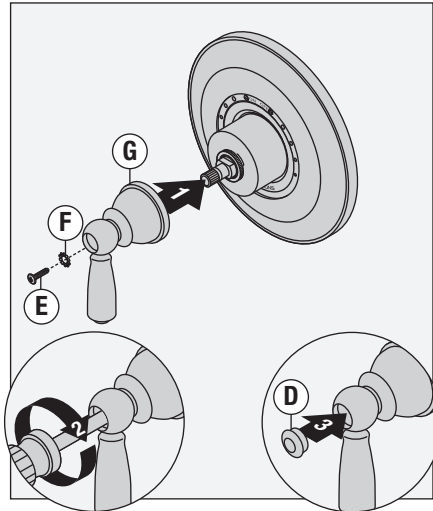


Note: Logo on dial should be in the 6 o'clock position.

- 2) Install dome cover (H) to valve by turning clockwise.

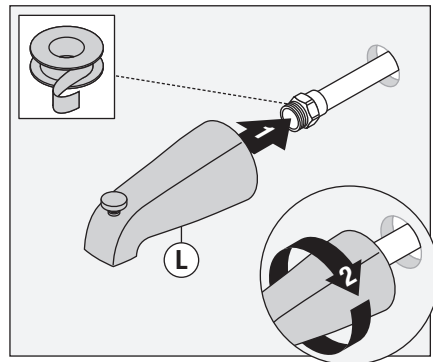


- 3) Install handle (G) to valve. Secure handle with star washer (F) and screw (E). Attach plug button (D) to handle.

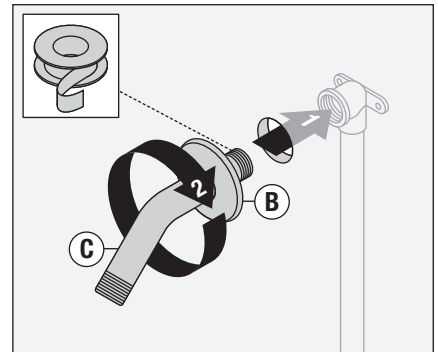


Note: Handle should be facing the 6 o'clock position.

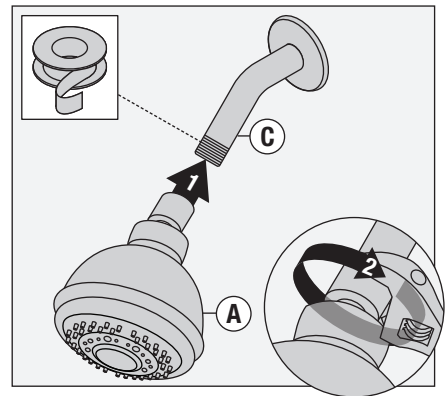
- 4) Install tub spout (L) to pipe fitting. Turn clockwise to secure.



- 5) Attach shower arm (C) and flange (B) to vertical shower pipe turning clockwise to tighten.



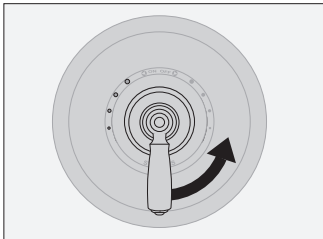
- 6) Install showerhead (A) to shower arm (C) turning clockwise to tighten.



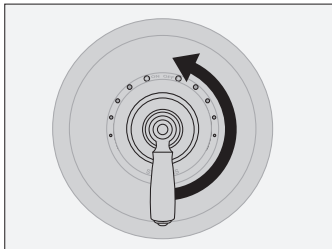
Operation & Maintenance

Temperature Control

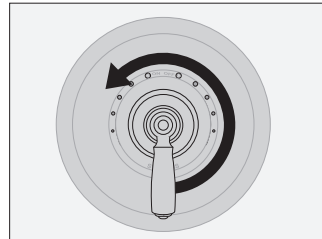
- 1) Turn shower handle counterclockwise approximately 1/4 turn to put valve in cold position.



- 2) Turn shower handle counterclockwise approximately 1/2 turn to put valve in warm position.



- 3) Turn shower handle counterclockwise approximately 3/4 turn to put valve in hot position.



Troubleshooting Chart

Finish is spotting.

Elements in water supply may cause water staining on finish.

Clean finished trim area with a soft cloth using mild soap and water or a non-abrasive cleaner and then quickly rinse with water.