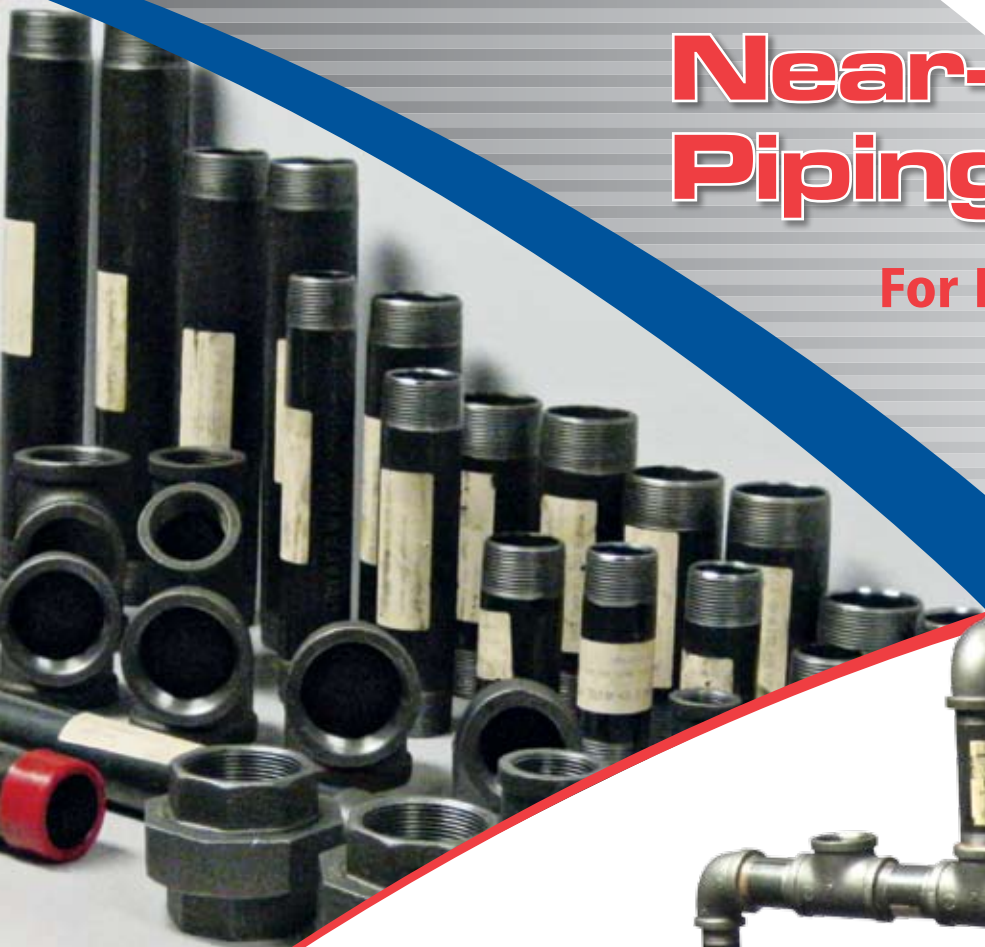


Near-Boiler Piping Kit

For MegaSteam™ Boilers



- Proper near-boiler piping every time!
- Pre-cut, pre-threaded nipples
- All fittings and nipples included
- Left or right supply, straight or dropped header all from same kit
- Makes drier steam with a more stable waterline
- Saves installation time, no need to carry and use a pipe threading machine

Burnham
by
U.S. Boiler Company

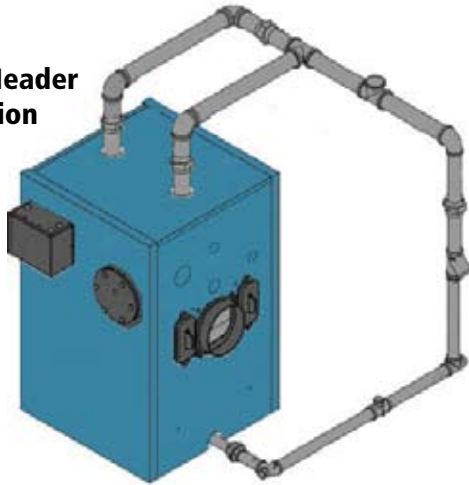
Near-Boiler Piping Kit

For MegaSteam™ Boilers

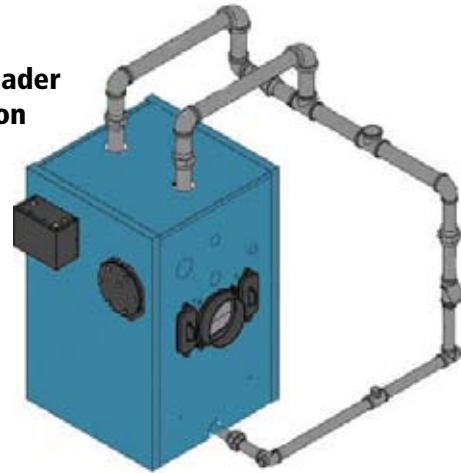
Near-Boiler Piping Kits for MegaSteam oil-fired boilers include all the pre-cut nipples and fittings required to configure near-boiler steam piping to meet factory specifications. Near-Boiler Piping Kit components eliminate the need to measure, cut, and thread every piece and also include Hartford Loops with "wye" fittings to connect to the system condensate return.

All nipples are labeled for easy field assembly. Kits can be configured for either standard or dropped headers with a 10-inch drop; and they can be installed for either left-hand or right-hand header and supply piping. Dropped headers installed on the right side of the boiler will not interfere with tankless coil piping or junction box wiring.

Standard Header Configuration



Dropped Header Configuration



Near Boiler Piping Kits Include...

- Two 2" risers on all boiler sizes
- 15-inch swing joints
- 2-inch header (3-inch for MST629)
- Standard or dropped header options
- 2-inch supply tee
- 1-1/2 inch equalizer
- 1-1/2 inch return "Y"
- 1-1/4 inch condensate return (1-1/2 inch on MST629)
- 3/4 inch make-up water tapping
- Installation instructions
- All components packed and shipped in a single box

Part Number	Product Description	Shipping Weight
101433-01	Near-Boiler Piping Kit for MST 283, 396, & 513	80 lbs.
101433-02	Near-Boiler Piping Kit for MST 629 only	100 lbs.



www.usboiler.net