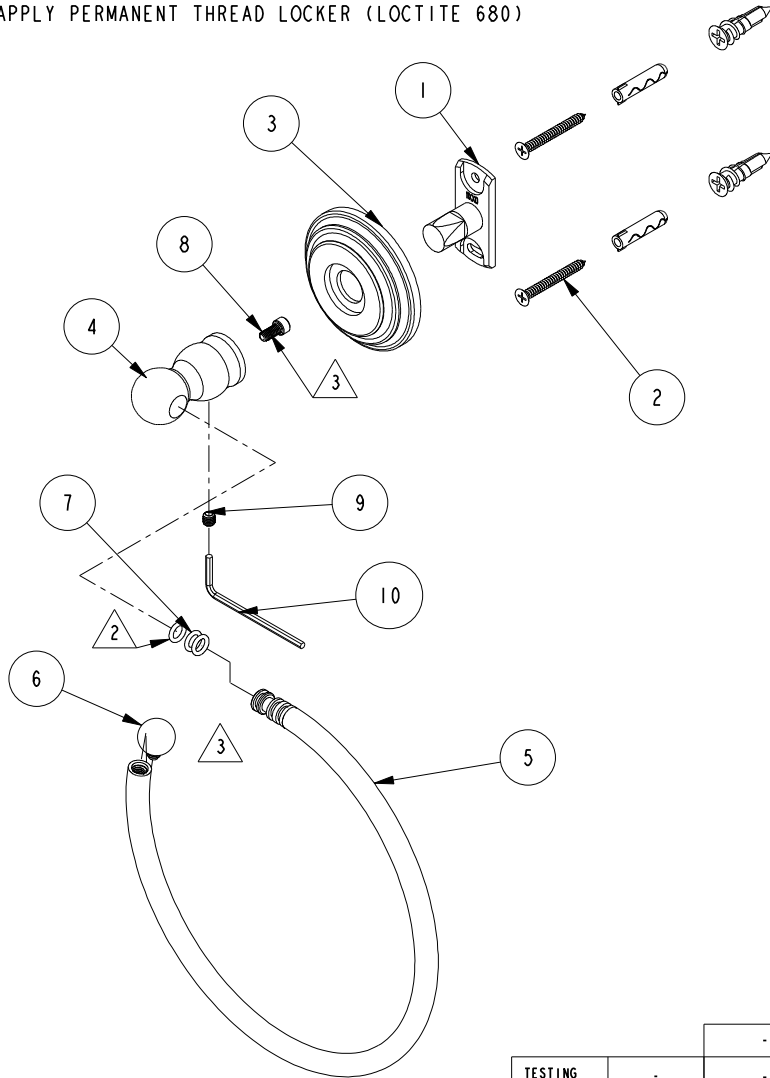


# NOTES:

1. TO INSPECT ASSEMBLY, FOLLOW FIRST ARTICLE AND IN PROCESS INSPECTION SHEET.

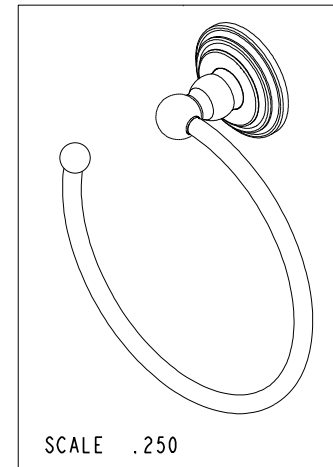
2 APPLY LIGHT FILM OF DOW III CRONING SILICON GREASE

3 APPLY PERMANENT THREAD LOCKER (LOCTITE 680)



## BILL OF MATERIAL (CURRENT LEVEL)

ITEM	PT/ASSY	DESCRIPTION	TYPE	QTY.
1	11XXD	SOLID MOUNTING BRACKET	PART	1
2	1-206	HARDWARE PACK	ASSEMBLY	1
3	1100C	TOWEL SHELF ROSETTE	PART	1
4	40750	POST - OPEN TOWEL RING	PART	1
5	7-759	TOWEL RING	ASSEMBLY	1
6	40754	FINIAL	PART	1
7	91049	O-RING, #2- 010, EPDM, 65-75 DURO, NSF 61	PART	3
8	92527	SCRW, 8-32 X 3/8 SKT CAP HD SS	PART	1
9	92308	SCRW, M5 X 5 SKT HD CUP PT W/ SELF LOC SS	PART	1
10	10888	HEX KEY, 2.5MM ALLOY STEEL	PART	1



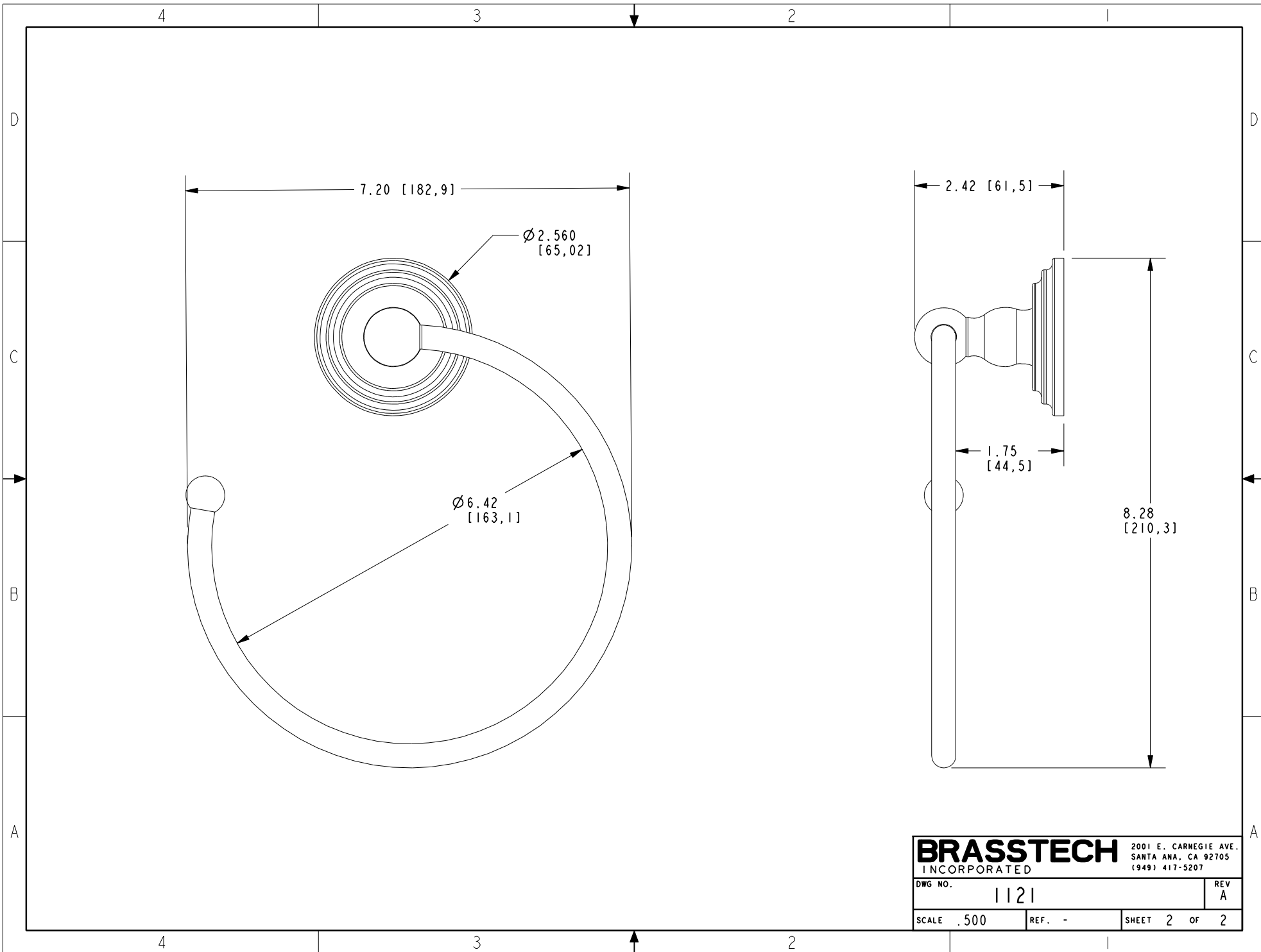
		-	-
TESTING	-	-	-
ASSEMBLY	-	-	-
PLATING	-	-	-
POLISHING	-	NEXT ASSY	USED ON
MACHINING	-	APPLICATION	
TOOLING FIXTURE #		REMOVE ALL BURRS AND SHARP EDGES	

UNITS ARE: INCHES (MM)	
TOLERANCES ARE:	
FRACTIONS	DECIMALS
±1/16"	±.005
.X ±.1	[2.5]
.XX ±.06	[1.5]
(X.XXX) DENOTES CRITICAL DIMS.	
ALL THREADS ARE CRITICAL	
DRAWN	R.S.
CHECKED	J.M.
APPROVED	J.M.

<b>BRASSTECH</b>		2001 CARNEGIE AVE SANTA ANA, CA 92705 (949) 417-5207	
INCORPORATED			
OPEN TOWEL RING			
DWG NO. 1121			REV A
SCALE .312	REF. -	SHEET 1	OF 2

COPYRIGHT 2005 BRASSTECH, INC.  
THESE DRAWINGS AND THE DESIGNS  
DEPICTED HEREIN ARE THE PROPRIETARY  
PROPERTY OF BRASSTECH. ANY USE  
OR REPRODUCTION IS SUBJECT TO  
THE EXPRESS APPROVAL OF BRASSTECH.  
UNAUTHORIZED USE IS STRICTLY  
PROHIBITED. ALL RIGHTS RESERVED.

-	A	EN-4378	07/27/21	R.S.
-	-	RELEASED	02/01/04	-
ZONE	REV	DESCRIPTION	DATE	APPROVED



<b>BRASSTECH</b>		2001 E. CARNEGIE AVE. SANTA ANA, CA 92705 (949) 417-5207	
DWG NO.	1121	REV	A
SCALE	.500	REF.	-
SHEET 2		OF 2	