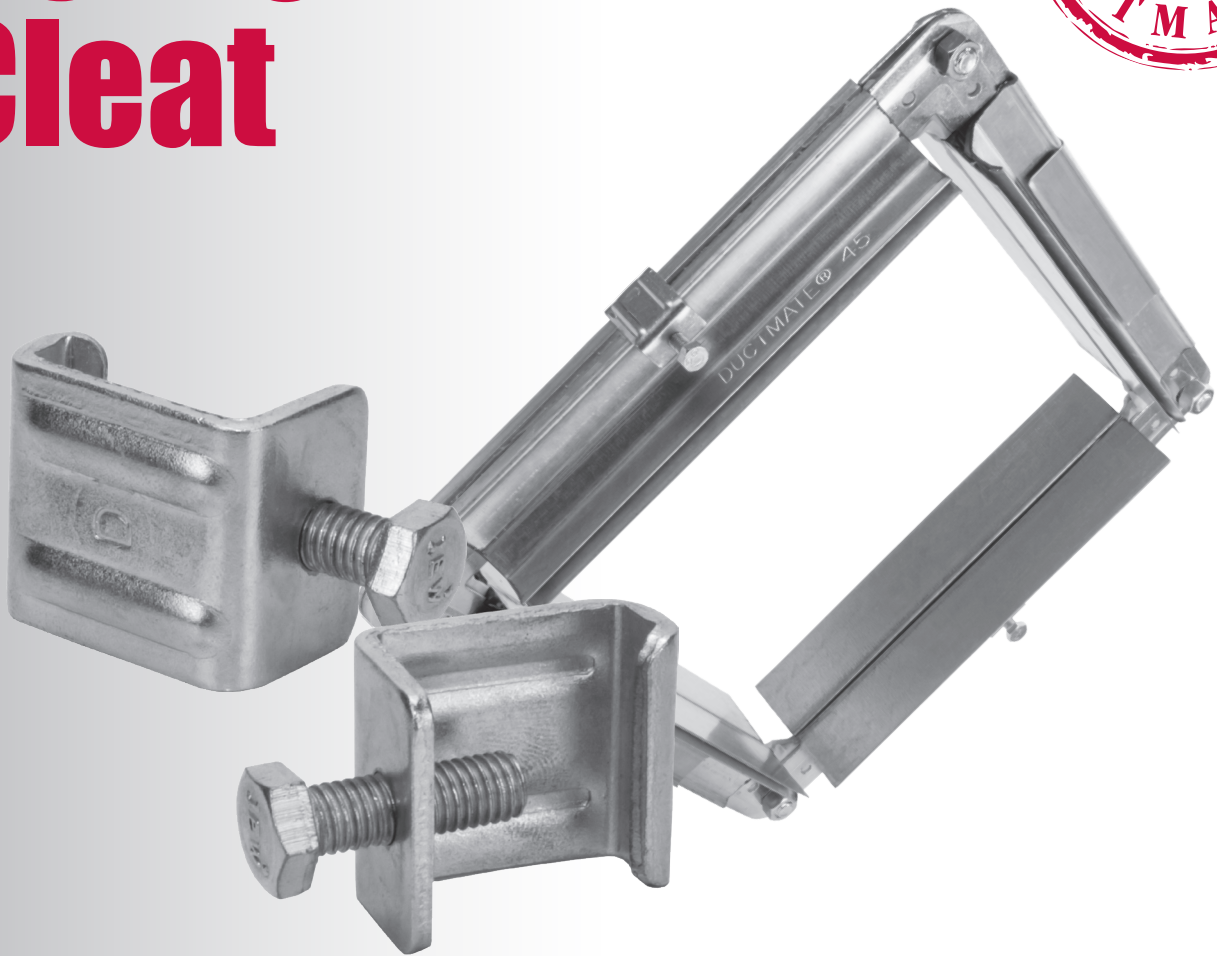




Bolt-On Cleat



Universal Flange Clamp

Complete Rectangular Duct Connections Quickly and Easily

- Can be used with multiple flange profiles:
DM 25, 35, 45°
WDCI J and H
T.D.C.® / T.D.F.®
- Stamped from 11 GA Galvanized Steel
- Easy to install
- No special tools required
- Neat, professional appearance



DUCTMATE®
Industries, Inc.

Bolt-On Cleat

Universal Flange Clamp

DESCRIPTION

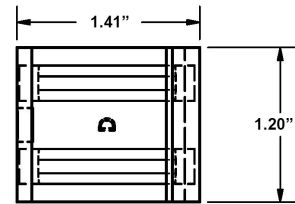
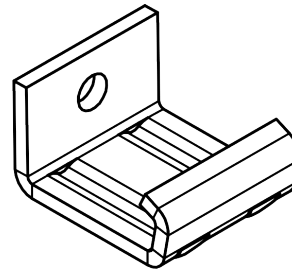
Universal flange clamp designed to be a quick and easy alternative to complete a rectangular duct connection when compared to traditional cleats.

BASIC USE

Complete a rectangular duct connection.

SPECIAL CHARACTERISTICS

- Can be used with multiple flange profiles:
DM 25, 35, 45°
WDCI J and H
T.D.C® / T.D.F®
- Stamped from 11 GA Galvanized Steel
- Easy to install
- No special tools required
- Neat, professional appearance



PACKAGING INFORMATION

| Part Number | Packaging | Weight |
|-------------|----------------|----------------------|
| D45CGA | 200 per carton | 25.6 lbs. per carton |

LIMITED PRODUCT WARRANTY

Ductmate warrants that the Bolt-On Cleat, when properly installed and maintained, will be free from defects in material and workmanship, and will comply with all written specifications made by Ductmate at the time of sale. Ductmate's warranty shall run for a period of one year from the date of manufacture.

Warranty Limitation

The warranty stated above is in lieu of all other warranties, express or implied, including but not limited to the implied warranties of MERCHANTABILITY AND FITNESS FOR A PARTICULAR PURPOSE. Although Ductmate may have suggested the product, or provided written or oral advice to the Purchaser, it is the Purchaser's responsibility to test and determine the suitability of Bolt-On Cleat, for the intended use and purpose, and Purchaser and/or its customer assumes all risk and liability whatsoever regarding such suitability.

Limitation of Liability

In the event of a breach of the above warranty, Ductmate's sole obligation, and Purchaser's sole and exclusive remedy, shall be, at Ductmate's option, repair or replacement of any defective products, or refund of an applicable portion of the purchase price. Ductmate shall have no liability for costs of removal or reinstallation of the product. The Purchaser agrees that no other remedy, including but not limited to loss of profits, loss sales, injury to person or property, or any other special, incidental or consequential damages, shall be available to the Purchaser for any claim arising out of this Agreement, regardless of whether such claim is made in contract or in tort, including strict liability in tort. In no event will Ductmate be obligated to pay damages to the Purchaser in any amount exceeding the purchase price that the Purchaser paid to Ductmate for the allegedly defective product.



Charleroi, PA
210 Fifth Street
Charleroi, PA 15022
724-258-0500

Lodi, CA
810 S. Cluff Avenue
Lodi, CA 95240-9141
209-333-4680

*Additional Manufacturing and Warehousing in
Monongabala, PA and Tulsa, OK*

1-800-245-3188 • www.ductmate.com

© Copyright Ductmate Industries, Inc. All rights reserved.



Ductmate Is A Proud Member Of The Following Organizations:



Distributed By: