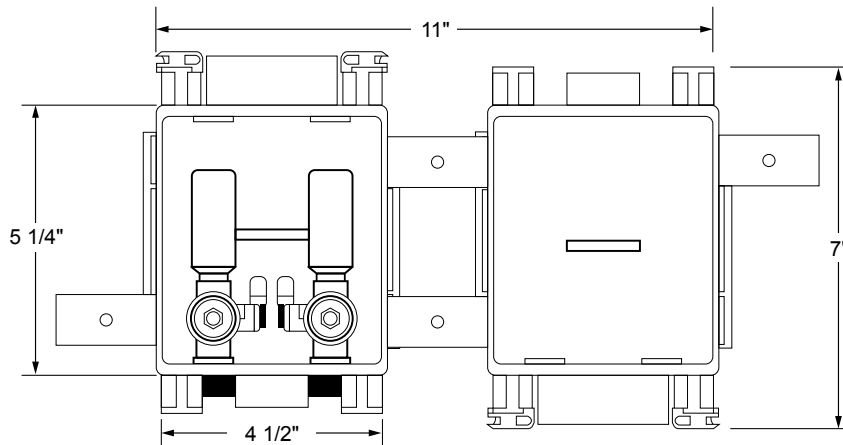


WATER TITE
IPS CORPORATION

FR MultiBox™ Two-Box Washing Machine Outlet Box System with Quarter Turn Arrester Valves



Specifications:

Furnish and install fire-rated MultiBox Two-Box Washing Machine Outlet Box System. Boxes may be inter-connected or installed separately. Valve box includes DWV drain to capture hose leaks, while the drain box contains 2" drain with integrated knock-out for DWV testing. Unit shall be Water-Tite product code checked below, as manufactured by IPS Corporation.

Box/Frame Material:

PVC & Intumescent Pad attached

Valves:

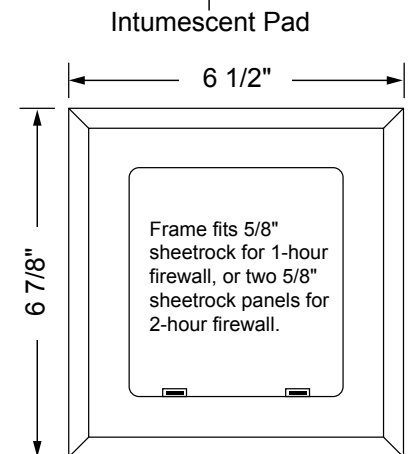
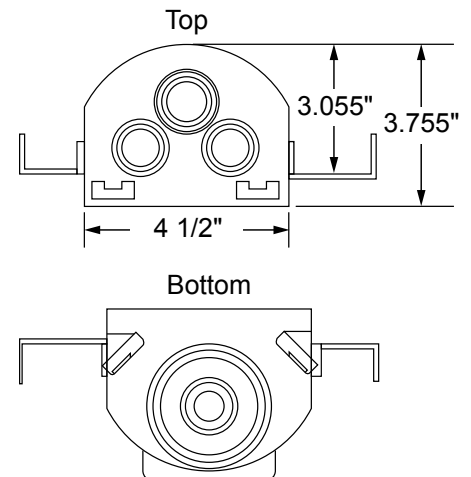
Qtr. Turn Arrester Valves with Sweat, CPVC, PEX, Wirsbo or REHAU EVERLOC+™ connection as checked below. Valves comply with ASME A112.18.1/CSA B125.1-05. Arresters complies with ASSE 1010.

Certifications: Box

Boxes have been certified with the following ratings: ASTM E814, 1 Hr (F), 41 Min (T) and 2 Hr (F), 101 Min (T)
CAN/ULC-S115-1 Hr (F/FH), 41 Min (FT/FTH) and 2 Hr (F/FH), 101 Min (FT/FTH)



Valves



Available Accessories:

Water Softener Adapter
Condensate Adapter
3 Universal Faceplates: Open, Solid and Louvered
Stabilizer Bar

Item #	Product Description	Model #	Quantity
83060	FR Two Box WMOB System, Qtr-turn Arrester Valves, 1/2" Sweat Conx.	MBFR1200HA	10
83061	FR Two Box WMOB System, Qtr-turn Arrester Valves, 1/2" CPVC Conx.	MBFR1201HA	10
83062	FR Two Box WMOB System, Qtr-turn Arrester Valves, 1/2" PEX Conx.	MBFR1202HA	10
83063	FR Two Box WMOB System, Qtr-turn Arrester Valves, 1/2" Wirsbo Conx.	MBFR1211HA	10
83334	FR Two Box WMOB System, Qtr-turn Arrester Valves, REHAU EVERLOC+™ Conx.	MBFR1205HA	10
Contractor Pack			
83056	FR WMOB, Qtr-turn Arrester Valves, 1/2" Sweat Conx.	MBFR1200HACP	10
83057	FR WMOB, Qtr-turn Arrester Valves, 1/2" CPVC Conx.	MBFR1201HACP	10
83058	FR WMOB, Qtr-turn Arrester Valves, 1/2" PEX Conx.	MBFR1202HACP	10
83059	FR WMOB, Qtr-turn Arrester Valves, 1/2" Wirsbo Conx.	MBFR1211HACP	10
83333	FR Two Box WMOB System, Qtr-turn Arrester Valves, REHAU EVERLOC+™ Conx.	MBFR1205HACP	10

IPS
CORPORATION

500 Distribution Parkway, Collierville, TN 38017 • Phone: 800-888-8312 • Fax: 901-853-5008 • www.ipscorp.com