

PUSH-JOINT FEMALE THREAD ADAPTER

858 Series

SPECIFICATION:

Sioux Chief 858 Series cast iron FIP x Push-Joint adapter shall be used where necessary in drainage systems. Adapter shall connect to DWV system by means of a neoprene Push-joint gasket. Adapter shall have standard pattern FIP threads designed for use with any standard MIP thread drain or cleanout.

Item Number
Submitted:

858-_____

MATERIALS:

ADAPTER BODY: Cast Iron

PUSH-JOINT GASKET: Neoprene

DIMENSIONS:

Top Diameter A:

2" adapter: 2 ⁵/₈"

3" adapter: 3 ¹³/₁₆"

4" adapter: 4 ³/₈"

Overall Height B:

2" adapter: 4 ¹/₈"

3" adapter: 4 ¹/₈"

4" adapter: 4 ¹/₈"

Connection C:

2" adapter: 2" cast iron Push-Joint

3" adapter: 3" cast iron Push-Joint

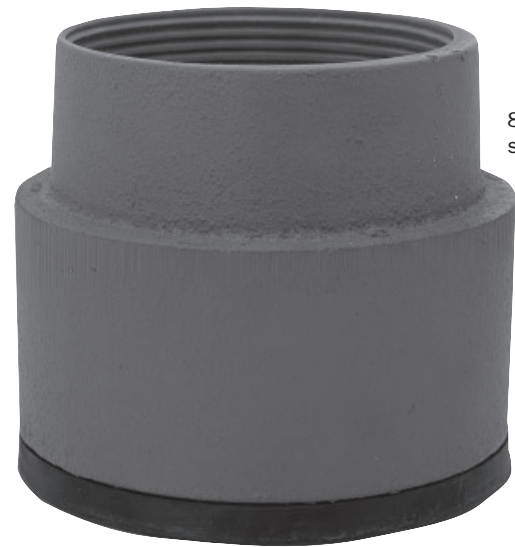
4" adapter: 4" cast iron Push-Joint

Threadway:

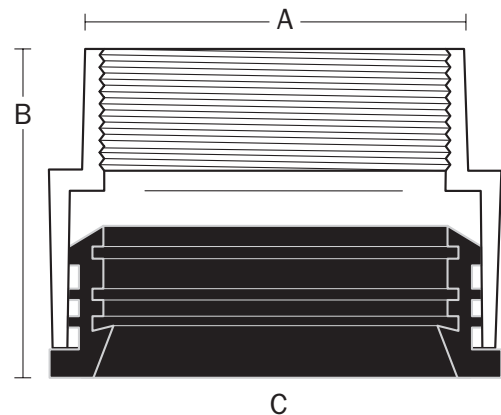
2" adapter: 2" FIP thread - standard pattern

3" adapter: 3" FIP thread - standard pattern

4" adapter: 4" FIP thread - standard pattern



858-63L
shown



Create Item Number Below

858-A

e.g. 858-63L = 3" Cast iron FIP x Push-Joint adapter

A Connection Size

☐ **62L** = 2" cast iron Push-Joint

☐ **63L** = 3" cast iron Push-Joint

☐ **64L** = 4" cast iron Push-Joint