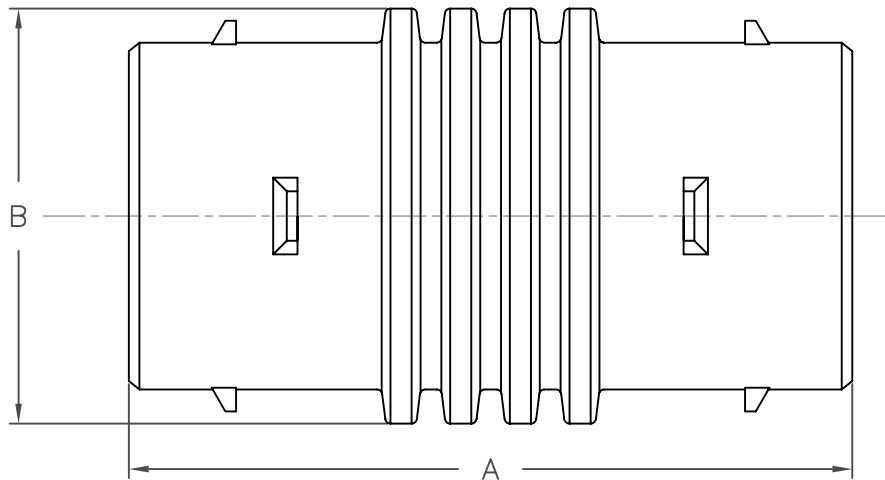



STRAIGHT

PART #	PIPE SIZE	A	B
0315AA	3 in (75 mm)	6.00 in (152 mm)	3.52 in (89 mm)
0415AA	4 in (100 mm)	8.25 in (210 mm)	4.75 in (121 mm)
0417AA	4 in (100 mm)	6.14 in (156 mm)	4.75 in (121 mm)
0515AA	5 in (125 mm)	8.25 in (210 mm)	5.88 in (149 mm)
0615AA	6 in (150 mm)	8.25 in (210 mm)	7.00 in (178 mm)
0815AA	8 in (200 mm)	11.50 in (292 mm)	9.13 in (232 mm)
1015AA	10 in (250 mm)	12.00 in (305 mm)	9.00 in (229 mm)

NOTE: ALL DIMENSIONS ARE NOMINAL



 ADVANCED DRAINAGE SYSTEMS, INC.	REVISIONS	
	BY	DATE
DRAWN BY JDP 07.16.02	AWM	01.21.03
	AWM	10.05.03
	MGB	1/15/05
APPROVED BY AWM 08.30.02	DRAWING #	1010