



**ISO 9002** Certified Quality System



**ANSI Z21.80 CGA 6.22**  
**ANSI Z21.18 CGA 6.3**

**LINE PRESSURE REGULATORS**  
**GAS APPLIANCE PRESSURE REGULATORS**

**IAS Certified:**

**Regulator type 300**  
**Regulator type 300P**  
**Regulator type 600**

**Specifications:**

**I.A.S. Certified Inlet Pressure**

Types 300, 300P, 600 ..... 2 PSI (140 mbar)  
..... 5 PSI (345 mbar)

**Maximum Inlet Pressure w/Vent Limiter**

LP Gas ..... 2 PSI (140 mbar)  
Natural Gas ..... 5 PSI (345 mbar)

**O.A.R.A. Tested Inlet Pressure**

Types 300, 300P, 600 ..... 10 psi (690 mbar)

**Emergency Exposure Limit**

Types 300, 300P, 600 ..... 65 PSI (4.5 bar)

**Outlet Pressure Adjustment**

Type 300 ..... 7"-9" w.c.  
Type 300P ..... 9"-12" w.c.  
Type 600 ..... 7"-11" w.c.

**Manufacturer's Adjustment**

Type 300 ..... 8" @ 2 PSI  
Type 300P ..... 11" @ 2 PSI  
Type 600 ..... 8" @ 2 PSI

**Gases**

For use with natural or LP gas

**Ambient Temperature Range**

-40 to 205° F (-40 to 96° C)

**Pipe Size NPT**

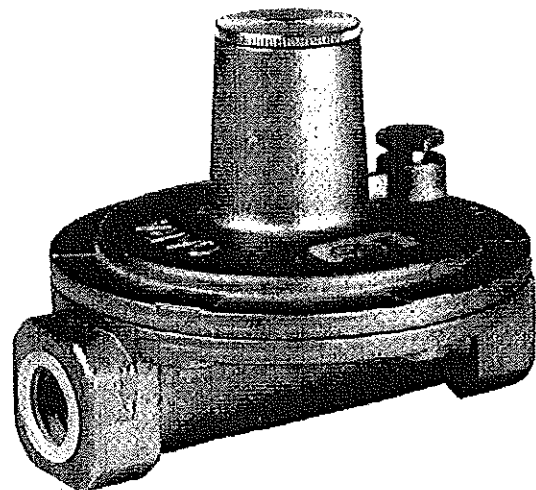
Type 300 ..... 1/2" X 1/2"  
Type 600 ..... 3/4" x 3/4"

**Venting**

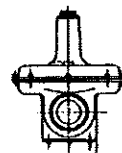
Type 300 ..... Vent Limiter "O" 3-18 1/8 NPT  
Type 600 ..... Vent Limiter "O" 6-36 3/8 NPT

**Code**

The four digit code indicates the calendar year and the week in which the regulator was manufactured.



These regulators are suitable for multi-poise mounting. But when using the vent limiting device, the regulator must be



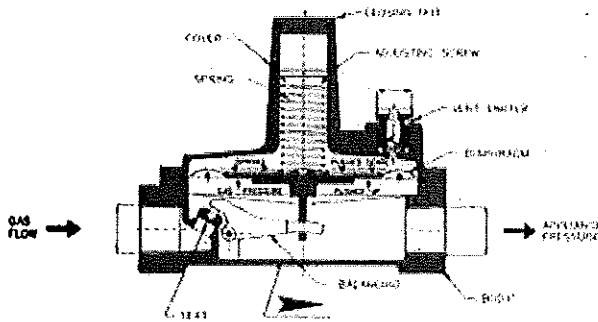
upright

mounted in a horizontal upright position. Install the regulator properly with gas flowing as indicated by the arrow on the casting.

**O.A.R.A.**

**IAS Certified**

Regulator type 300 2-5 PSI  
Regulator type 600 2-5 PSI



**Features:**

- Designed for multi-poised mounting
- Self-aligning valve with lever action for dead end lockup
- Durable, corrosion-resistant construction
- High performance type for pounds to inches reduction

**Benefits:**

- Eases of installation
- Longer life, less maintenance
- Can be used as a single stage regulator or a first-stage on two-stage system
- May be used as a line regulator for both 2 psi and 5 psi flexible tubing house piping systems
- Meets many utility specifications

**Description**

The O.A.R.A. Type 300 & 600 Pressure Regulators are manufactured in order to supply the highest performance both as Line Pressure Regulators and Gas Appliance Regulators. They feature precise regulating control from full flow down to tiny pilot flows.

All the models are approved by IAS in accordance with the two different standards. The regulators meet utility specifications for use on residential, commercial and industrial applications.

The materials of all the component parts are carefully selected and corrosion resistant. The diaphragm and the washer are made of nitrile rubber, which guarantees a resistance to combustible gas. The rubber is selected to work at the following ambient temperature: -40 to 205° F (-40 to 96° C)

Housings are rugged aluminium die castings. The vent limiter is made of brass. The regulators are supplied with a vent limiter type "O" (NPT Thread); in the event of a diaphragm rupture, gas escapement is limited to within ANSI standard level.

The special manufacture of the regulator, with balancing and seat, guarantees excellent control of the outlet pressure in the event of absence of flow.

**Outlet Pressure Adjustment Method**

Remove the aluminium protection cap which is on the cover of the regulator.

2. If you want to increase the outlet pressure, turn the adjustment screw clockwise; if you want to decrease, turn counterclockwise.
3. **WARNING!!!** Replace the aluminium protection cap.

**Notes for the Installer**

The regulators have been manufactured with high quality materials, carefully selected for corrosion and all combustible gas resistant. In case of outside installation, however, the regulators should be properly protected from inclement weather.

The regulators must be horizontally installed with the cover upwards in order to allow the correct working of the vent limiter; in case of alternative position installation, it is necessary to remove the vent limiter and connect a NPT threaded pipe to send any gas outwards.

Be sure gas flow is the same direction as the gas arrow indicated on the body of the regulator.

The installation must be performed in accordance with local codes or, if absent, with the National Fuel Gas code ANSI Z223.1, or with Installation codes CAN/CGA-B149.

If the regulators are installed in supply lines with a pressure over 2 psi, it is necessary to supply them with independent means to limit the downstream pressure to a maximum of 2 psi.