

SPECIFICATIONS

FIGURE 62B

KNIFE GATE VALVES



STAINLESS STEEL LINED RESILIENT SEATED KNIFE GATE VALVE

Figure 62B is a lined valve with the economy of a ductile iron body and the corrosion resistance of all stainless steel wetted parts.

Figure 62B is designed for pulp and paper, chemicals, mining and petroleum industries to handle dense mixtures of stock and slurries where positive shutoff is required. The shearing action of the knife gate cuts through solids and cleans the seat as it closes.

FEATURES

- Unidirectional shutoff
- Stainless steel lined ductile iron body
- Thrust ball bearing yoke bushing (18" and larger)
- EPDM seat (Viton® optional)
- Cast iron handwheel
- Bonnetless, outside screw and yoke
- Rising stem
- Corrosion-resistant stainless impregnated coating
- Meets MSS SP-81 specification for 150 PSI CWP
- Smooth flow, non-clogging step seat design
- Available in sizes from 3"–24"

PRODUCT SPECIFICATIONS

Standards

- Design: MSS SP-81
- Flange Drilling: ANSI B16.5
- Seat/Shell Test: MSS SP-81

Options

FNW offers many options and modifications for valves. These include, but are not limited to:

- Actuation including ratchets, chain wheels, AWWA nuts, gear-operators, pneumatic & hydraulic cylinders, and electric actuators
- Packing options for pH and temperature requirements
- Back seat stops for low ΔP or reverse operation applications, or to prevent knife blade deflection
- V-ports for reduced plugging in metering applications
- Stem extensions in carbon and stainless steel
- Conversion to non-rising stem (NRS)
- Deflection cones in Ni-Hard and HDPE for added seat and gate protection in abrasive services
- Flush ports to clear suspended matter from the valve chest or seat pocket area
- Quick-opening levers
- Gate scraper
- Viton® seat

Contact FNW for knife gate valve options.

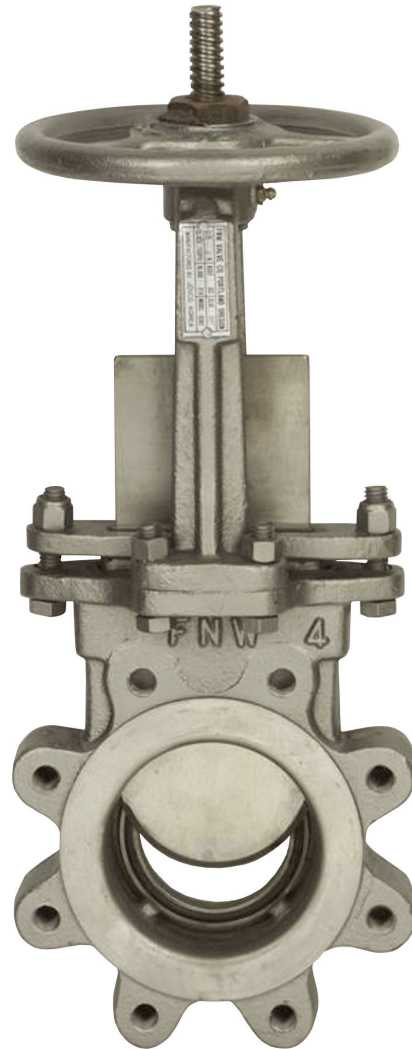


FIGURE NUMBER MATRIX

FNW 62B		
SIZE CODE (IN.)		
3 = M	10 = 10	18 = 18
4 = P	12 = 12	20 = 20
6 = U	14 = 14	24 = 24
8 = X	16 = 16	

SPECIFICATIONS

FIGURE 62B KNIFE GATE VALVES



STAINLESS STEEL LINED RESILIENT SEATED KNIFE GATE VALVE

FLOW COEFFICIENTS, PORT AREAS & WEIGHTS

Size (in.)	CV	Port Area (in ²)	Wt (lbs)
3	190	4.37	24
4	340	7.79	35
6	890	20.58	57
8	1710	39.46	86
10	2670	61.62	128
12	3990	92.07	169
14	5070	117.03	223
16	6660	153.42	295
18	8240	189.81	363
20	10460	240.96	557
24	15400	354.81	671

PACKING OPTIONS

Product Type	Temperature Limit
PTFE Impregnated Fiber (Standard)	425°F
Pure TFE	425°F
TFE Fiber (Ultra)	500°F
Graphite Filament Yarn	1000°F

REFERENCE CHART

Item #	Size (in.)	Dimensions (in.)								
		L	Ød	ØG	ØC	N	^{NC} P	T	ØW	H
FNW62BDM	3	2.00	2.36	5.00	6.00	4	5/8"-11	0.315	7.09	15.75
FNW62BDP	4	2.00	3.15	6.18	7.50	8	5/8"-11	0.315	7.87	18.90
FNW62BDU	6	2.25	5.12	8.50	9.50	8	3/4"-10	0.315	9.84	24.41
FNW62BDX	8	2.75	7.09	10.63	11.75	8	3/4"-10	0.315	11.81	31.50
FNW62BD10	10	2.75	8.86	12.76	14.25	12	7/8"-9	0.394	13.78	37.80
FNW62BD12	12	3.00	10.83	15.00	17.00	12	7/8"-9	0.394	15.75	43.31
FNW62BD14	14	3.00	12.21	16.26	18.75	12	1"-8	0.472	17.72	48.82
FNW62BD16	16	3.50	13.98	18.50	21.25	16	1"-8	0.472	19.69	53.94
FNW62BD18	18	3.50	15.55	20.98	22.75	16	1-1/8"-7	0.472	19.69	60.24
FNW62BD20	20	4.50	17.52	22.99	25.00	20	1-1/8"-7	0.591	21.65	67.72
FNW62BD24	24	4.50	21.26	27.24	29.50	20	1-1/4"-7	0.591	21.65	79.13

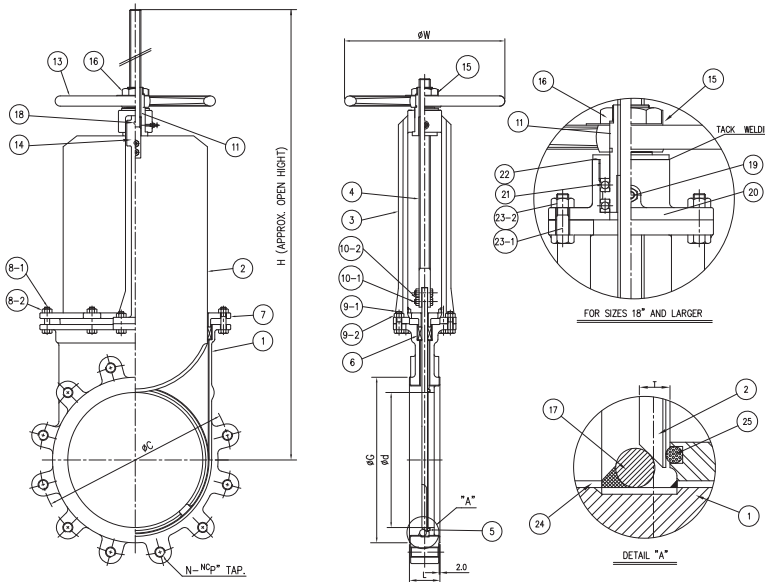
FIGURE 62B

KNIFE GATE VALVES



STAINLESS STEEL LINED RESILIENT SEATED KNIFE GATE VALVE

PARTS DIAGRAM



PART MATERIALS & QUANTITY

Ref #	Description	Material	Qty	Notes	Ref #	Description	Material	Qty	Notes
1	Body	Ductile Iron	1	-	12	Thrust Washer	Brass	1	-
2	Knife	A240 316	1	-	13	Hand Wheel	A338	1	-
3	Yoke	A216 WCB	1	-	14	Name Plate	Aluminum	1	-
4	Stem	A276 410	1	-	15	Lock Washer	A240 304	1	-
5	Body Seat Ring	A240 316	1	Welding	16	Wheel Nut	Brass, Steel	1	-
6	Packing	PTFE Impregnated Fiber	1 Set	Non-Asbestos	17	Bottom Stopper	A240 316	2	Welding
7	Packing Gland	A216 WCB	1	-	18	Rivet	Aluminum	2	-
8-1	Gland Bolt	Steel	1 Set	-	19	Grease Nipple	ASS'Y	1	-
8-2	Gland Nut	Steel	1 Set	Nylon Lock Nut	20	Bearing Housing	A216 WCB	1	-
9-1	Yoke Bolt	Steel	4	-	21	Thrust Ball Bearing	ASS'Y	2	18" And Larger
9-2	Yoke Nut	Steel	4	-	22	Bearing Gland	A216 WCB	1	Tack Weld
10-1	Clevis Bolt	A193 B8	2	-	23-1	Bearing Housing Bolt	Steel	4	-
10-2	Clevis Nut	A194 8	2	Nylon Lock Nut	23-2	Bearing Housing Nut	Steel	4	-
11	Yoke Sleeve	Brass	1	-	24	Body Liner	A240 316	1 Set	Welding
					25	Seat O-Ring	EPDM	1	-