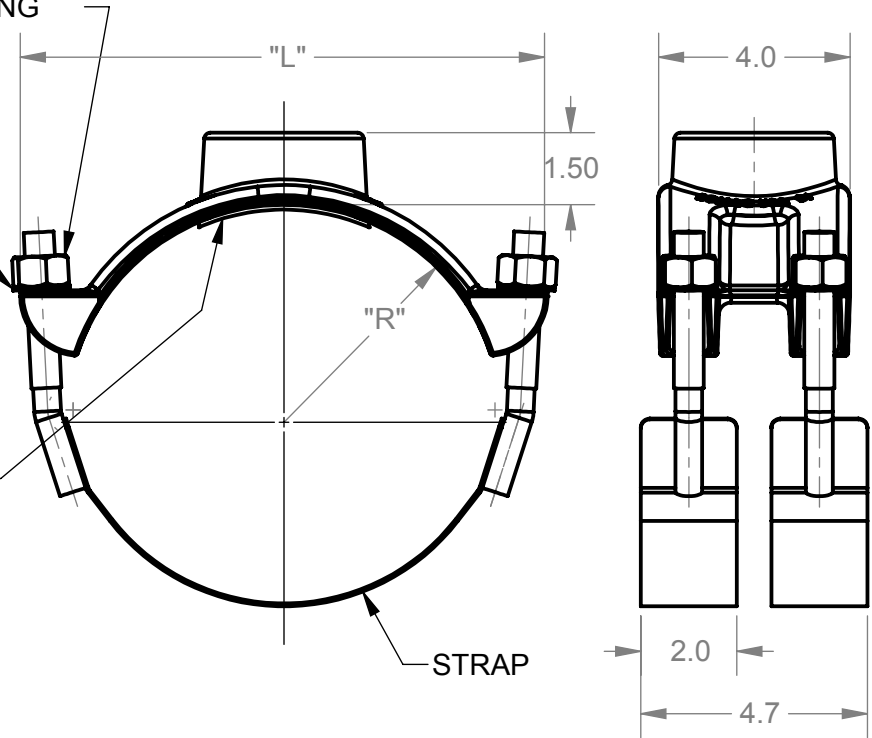


5/8-11UNC WITH  
HEAVY HEX NUTS  
COATED TO  
PREVENT GALLING

TYPE 304 SS  
WASHER

GASKET,  
NBR RUBBER



NOTE:

1. ALL MATERIAL DUCTILE IRON PER ASTM A536 GR. 65-45-12 UNLESS NOTED OTHERWISE.
2. COATING:
  - 202S: SHOP COAT ENAMEL
  - 202NS: NYLON COATING 10-12 MILS THICK.
3. THREAD: "IP" (NPT) OR "CC" (PER AWWA C800) AVAILABLE.
4. STRAP: TYPE 304 STAINLESS STEEL, 5/8"-UNC THREAD WITH HEAVY HEX NUT AND FLAT WASHER. GMAW WELDED, CHEMICALLY CLEANED AND PASSIVATED.

REVISIONS			
REV.	DESCRIPTION	DATE	EDITOR
R0	INITIAL RELEASE	'15 JUN 10	DEL EATON

DIMENSIONS			
NOM. SIZE	PIPE OD RANGE	L	R
4"	4.00 - 4.50	6.94	2.25
	4.50 - 4.80	7.00	2.40
	4.50 - 5.40	7.63	2.70
6"	6.00 - 6.63	8.75	3.32
	6.63 - 6.90	8.81	3.45
	6.63 - 7.60	9.50	3.80
8"	8.00 - 8.63	11.19	4.32
	8.63 - 9.05	11.13	4.53
	8.63 - 9.80	11.81	4.90
10"	10.00 - 10.75	13.75	5.38
	10.75 - 11.10	13.06	5.55
	11.10 - 12.12	14.19	6.06
12"	12.00 - 12.75	16.56	6.38
	12.75 - 13.20	16.19	6.60
	13.20 - 14.38	16.31	7.19
14"	15.30 - 16.80	11.69	8.40
16"	17.40 - 18.90	12.69	9.45
18"	19.50 - 21.10	12.69	10.45
20"	21.10 - 22.70	12.69	11.35
22"	22.70 - 24.30	12.63	12.15
24"	24.30 - 25.90	14.5	12.95
26"	25.70 - 27.30	14.5	13.65
28"	27.30 - 28.90	14.5	14.45
30"	28.90 - 30.50	14.5	15.25
	30.50 - 32.10	14.5	16.05

<p>PROPRIETARY NOTICE</p> <p>THIS DRAWING CONTAINS CONFIDENTIAL PROPRIETARY INFORMATION AND IS THE PROPERTY OF ROMAC IND., INC. IT IS TO BE USED ONLY FOR THE PURPOSE FOR WHICH IT WAS SUBMITTED AND SHALL NOT HAVE ITS INFORMATION DISCLOSED OR REPRODUCED IN WHOLE OR IN PART FOR ANY PURPOSE WITHOUT PRIOR WRITTEN PERMISSION OF ROMAC IND., INC.</p>	<p>UNLESS OTHERWISE SPECIFIED</p> <p>DIMENSIONS ARE IN INCHES</p> <p>TOLERANCES ARE ON:</p> <p>1 PL DECIMALS ± 0.020</p> <p>2 PL DECIMALS ± 0.010</p> <p>3 PL DECIMALS ± 0.005</p> <p>ANGLES ± 1°</p> <p>FRACTIONS ± 1/64</p>	<p>SIGNATURES</p> <p>DRAWN</p> <p>Del Eaton</p> <p>APPROVED</p> <p>Peter Nielsen</p>	<p>DATE</p> <p>06/10/2015</p> <p>9/25/2015</p>		<p>ROMAC INDUSTRIES INC.</p> <p>TITLE</p> <p>202S AND 202NS SADDLES</p> <p>4" - 30"</p>
<p>MODEL NAME: 202NS-9.05 X 1 IP</p> <p>CONFIGURATION NAME: 202S</p>		<p>MODEL CAD #: CAD-021154</p>		<p>DWG. NO. CAD-021165</p> <p>SIZE A</p> <p>REV. NO. R0</p> <p>SCALE 1:4</p> <p>SHEET 1 OF 1</p>	