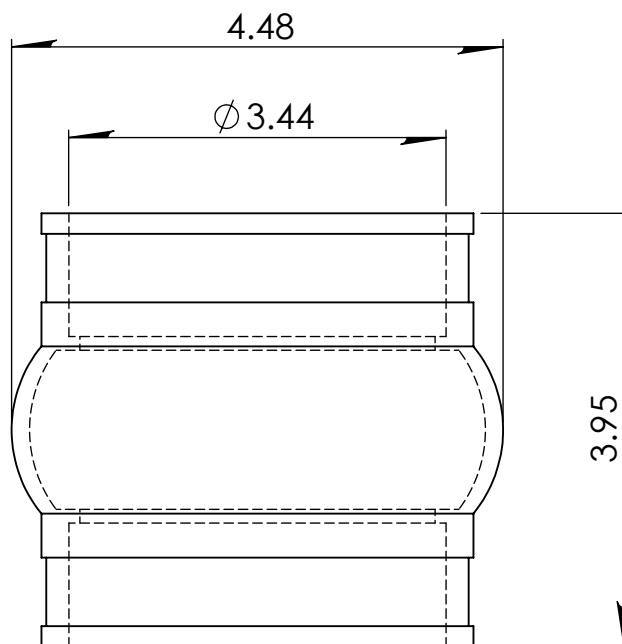
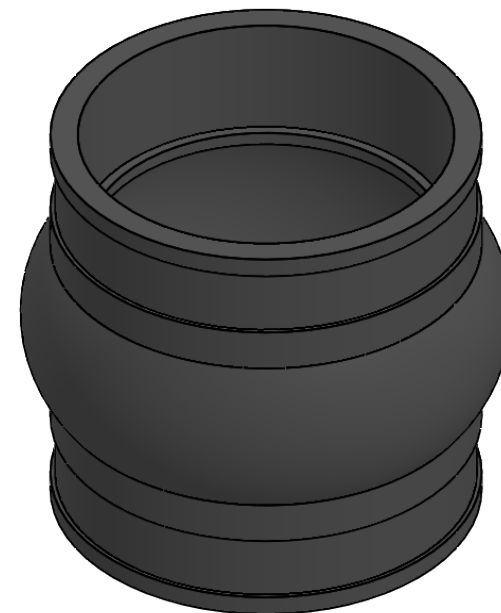
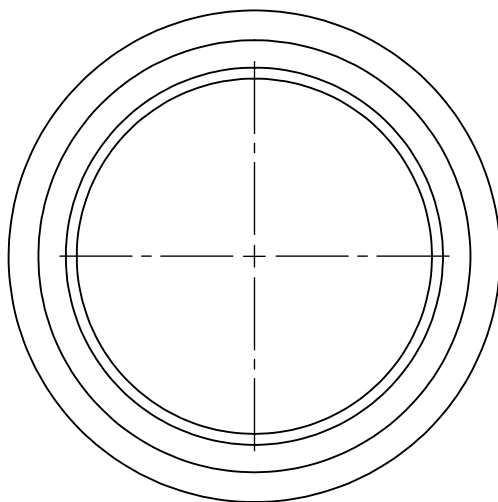




XJ-3

CONNECTS 3 IN. CI/PL TO 3 IN. CI/PL



ACCOMODATES 1½ IN.
PIPE EXPANSION AND
½ IN. PIPE CONTRACTION
FROM NORMAL POSITION

PROPRIETARY AND CONFIDENTIAL
THE INFORMATION CONTAINED IN THIS
DRAWING IS THE SOLE PROPERTY OF
FERNCO, INC. ANY REPRODUCTION IN
PART OR AS A WHOLE WITHOUT THE
WRITTEN PERMISSION OF FERNCO, INC.
IS PROHIBITED.

TOLERANCES:
FRACTIONAL $\pm 1/4"$
.XX = $\pm .06$
ANG. = $\pm 3^\circ$
UNLESS OTHERWISE SPECIFIED

MATERIAL	PVC	CLAMPS USED	300 SERIES STAINLESS	UNITS:	SIZE:	AUTHOR:	SCALE:	
PART WEIGHT		INSTALLATION TORQUE	60 IN · LBS	INCHES	A	ELI MILLER	NOT TO SCALE	
BOX QUANTITY		MIN/MAX TEMP.	50/130 °F	3RD ANGLE PROJECTION DO NOT SCALE DRAWING		CHECKER:	DATE:	SHEET 1 OF 1
PRESSURE TESTED		CSA	B602			7/18/2019		