


## Highlights

- Commercial Grade
- Solid Brass Construction

## Code Compliance

Price Pfister products are designed and manufactured in compliance with the following standards and codes:

- IAPMO certified
- ASME A112.18.1
- CSA B125 certified
- ANSI A117.1 (Lever handles only) 

## 69 Series

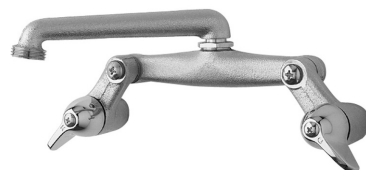
### Laundry/Utility Faucet

Two-Handle

Compression Valves

<b>Finishes</b>	69-020	69-510
Satin Chrome	X	
Unfinished		X

<b>Features</b>	69-020	69-510
Blade Handles	X	X
1/2" I.P. Inlets	X	X
3 3/8" Fixed Installation		X
4"-9 3/8" Variable Installation	X	
Clamp-On		X
Wallmount	X	
Pforever Warranty®	X	X



69-020 ☐



69-510 ☐

For additional information, please contact your Price Pfister representative, or visit our website at [www.pricepfister.com](http://www.pricepfister.com).

Project: \_\_\_\_\_

Contractor: \_\_\_\_\_

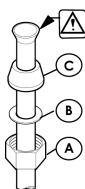
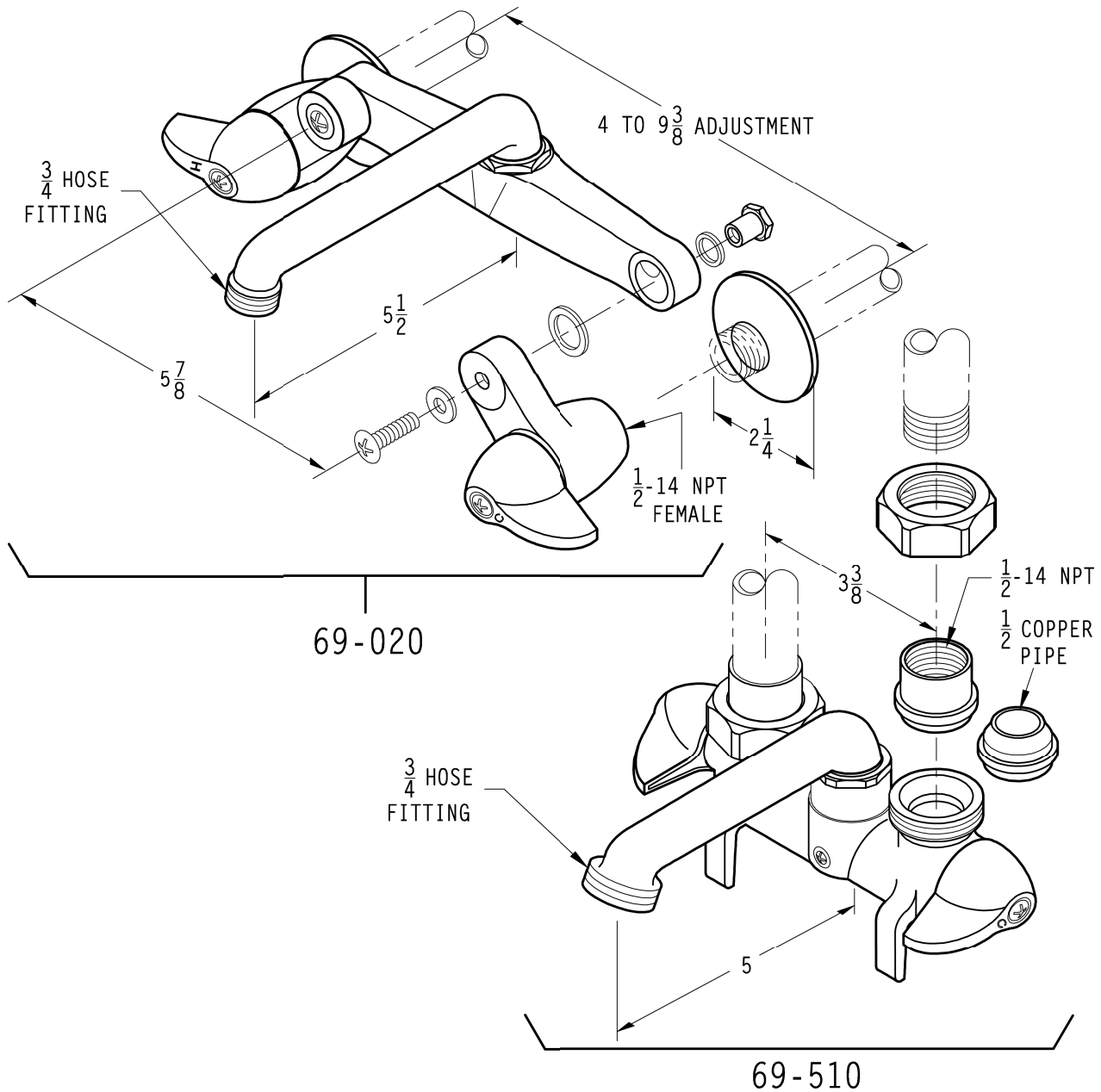
SS-069-01

**1-800-PFAUCET** [www.pricepfister.com](http://www.pricepfister.com)  
19701 DaVinci, Lake Forest, CA 92610  
01/8/03

**Price Pfister®**  
 Pfreshet Ideas in Pfaucets.

## 69 Series

### Laundry/Utility Faucet



**CAUTION:**  
When using the compression fittings in this package, with these types of installations, the installer must flare or bead the water supply lines to avoid blow-out conditions. Avoiding such steps in the installation of the unit may result in water damage.

Connect inlet supply lines by assembling brass supply nut (A), friction ring (B) and cone washer (C) onto  $\frac{3}{8}$ " O.D. straight copper tube. Bead or flare. Wrench tighten.

Dimensions are in Inches

**1-800-PFAUCET** [www.pricepfister.com](http://www.pricepfister.com)  
19701 DaVinci, Lake Forest, CA 92610  
01/8/03

**Price Pfister®**  
Pf Pfreshet Ideas in Pf faucets.

SS-069-01