

Location:




SYMMONS® Temptrol II™

Tub-Shower System BP-56-2

Specification Submittal

Feature Highlights

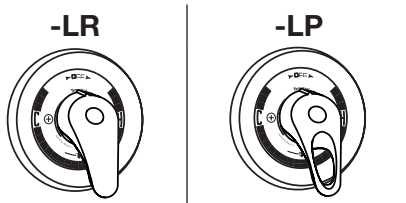
- Symmons Tub-Shower System
- Symmons Temptrol® pressure balancing mixing valve with adjustable stop screw to limit handle turn
- Clear-flo 2000 single function showerhead #4-226F
- Showerhead mounting arm and flange
- Showerhead standard flow rate is 2.5 gpm (9.5 L/min)
Optional lower flow rate restrictor available 
- Diverter tub spout, #054
- Polished chrome finish (standard)

Model Numbers

- ☐ BP-56-2
Tub-Shower System with Symmons Temptrol® mixing valve
- ☐ BP-56-2-TRM...
Trim only, valve must be ordered separately

Handle Options / Modifications

Append appropriate -suffix to model number

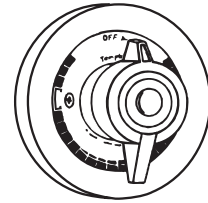


- ☐ -LR Lever handle
- ☐ -LP Loop style lever handle

Finish Options / Modifications

Append appropriate -suffix to model number

- ☐ -STN Satin nickel
 - Polished chrome (standard finish)



Options / Modifications

Append appropriate -suffix to model number

- ☐ -X Symmons Temptrol pressure balancing mixing valve includes integral service stops to allow water shut-off for service
- ☐ -IPS 1/2 inch female IPS connections on Symmons Temptrol® mixing valve
- ☐ -REV Reverse coring in valve for back to back installations; hot on right, cold on left, available with (-X) integral stops only
- ☐ -2.0 2.0 (7.6 L/min) Flow rate restrictor
- ☐ -1.5 1.5 (5.7 L/min) Flow rate restrictor
- ☐ -L/HD Showerhead not included
Includes showerhead arm and flange only
- ☐ -B Chrome brass escutcheon on valve
- ☐ -VP Vandal resistant escutcheon screws
- ☐ -PHS Pulsating hand spray
- ☐ -PSH Pulsating showerhead

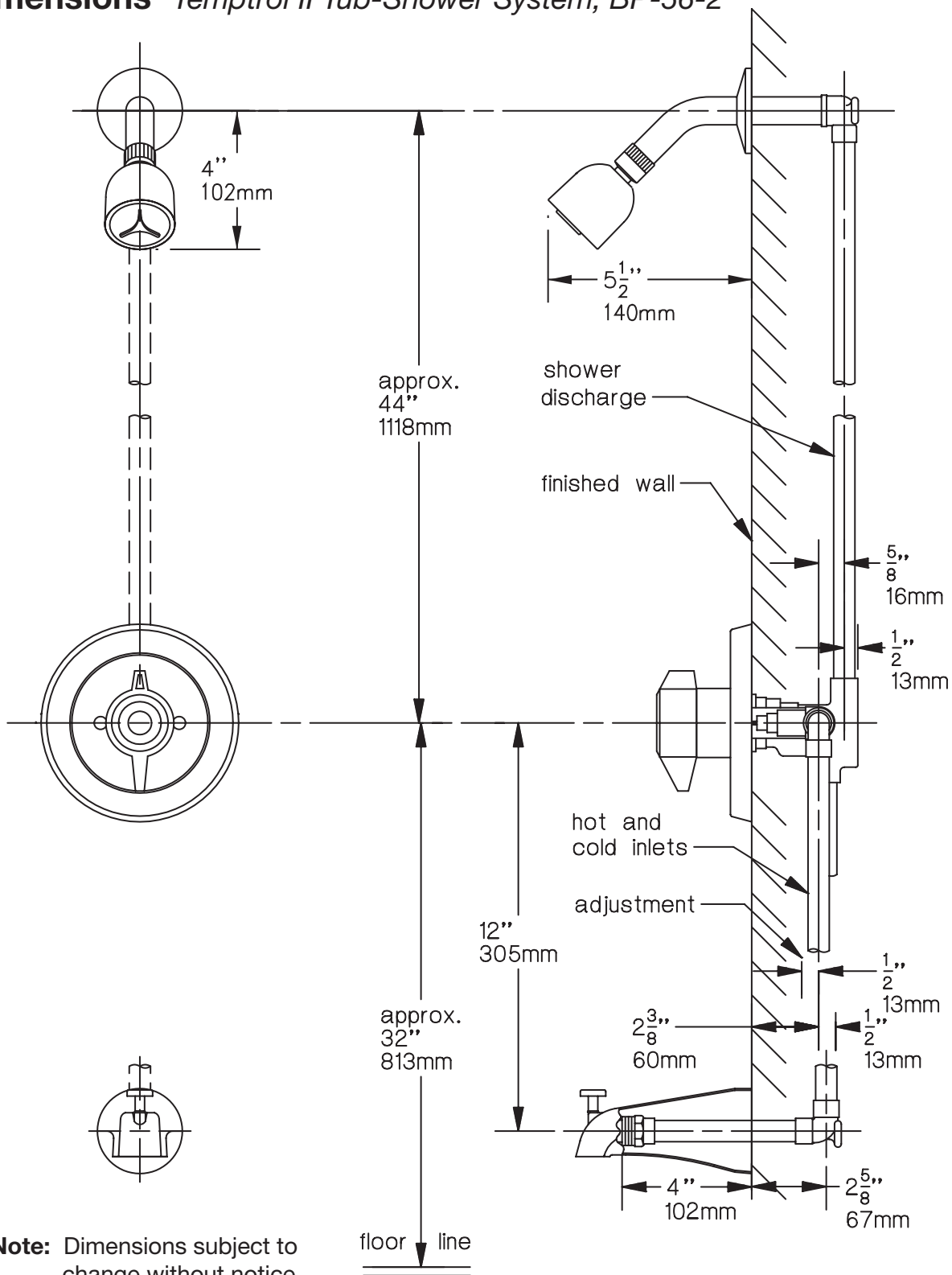
Standards / Certifications

-ASME A112.18.1; CSA B125.1

Warranty

- Limited Lifetime - to the original end purchaser in consumer installations.
- 5 years - for commercial installations

Dimensions *Temptrol II Tub-Shower System, BP-56-2*



Symmons Industries, Inc. ■ 31 Brooks Drive ■ Braintree, MA 02184
 Phone (800) 796-6667 ■ Fax (800) 961-9621
 Website: www.symmons.com ■ Email: gethelp@symmons.com

©2014 Symmons Industries, Inc. Printed in U.S.A. ■ 082614

SYMMONS®
 the smart choice™